

EaseUS Data Recovery Wizard User Guide

EaseUS Data Recovery Wizard is an easy-to-use data recovery software that allows you to easily recover lost data from PC, laptop, hard drive or USB drive. It has been endowed with a straightforward interface to ensure an efficient and smooth use for common users.

This User Manual includes a detailed instruction of how to use the program and all the features in this product. Any more questions or problems when using this product, please visit the Knowledge Base: <http://kb.easeus.com/>. Or contact our 24 hours Tech Support by emailing your issues to support@easeus.com.

1. System & Hardware Requirement

Operating System: Windows 10, Windows 8.1, Windows 8, Windows 7, Windows Vista, Windows XP, Windows Server 2012, Windows Server 2008, Windows Server 2003

File System: FAT(FAT12, FAT16, FAT32), exFAT, NTFS, NTFS5, ext2, ext3, HFS+

CPU: at least with x86.

RAM: at least 128 MB.

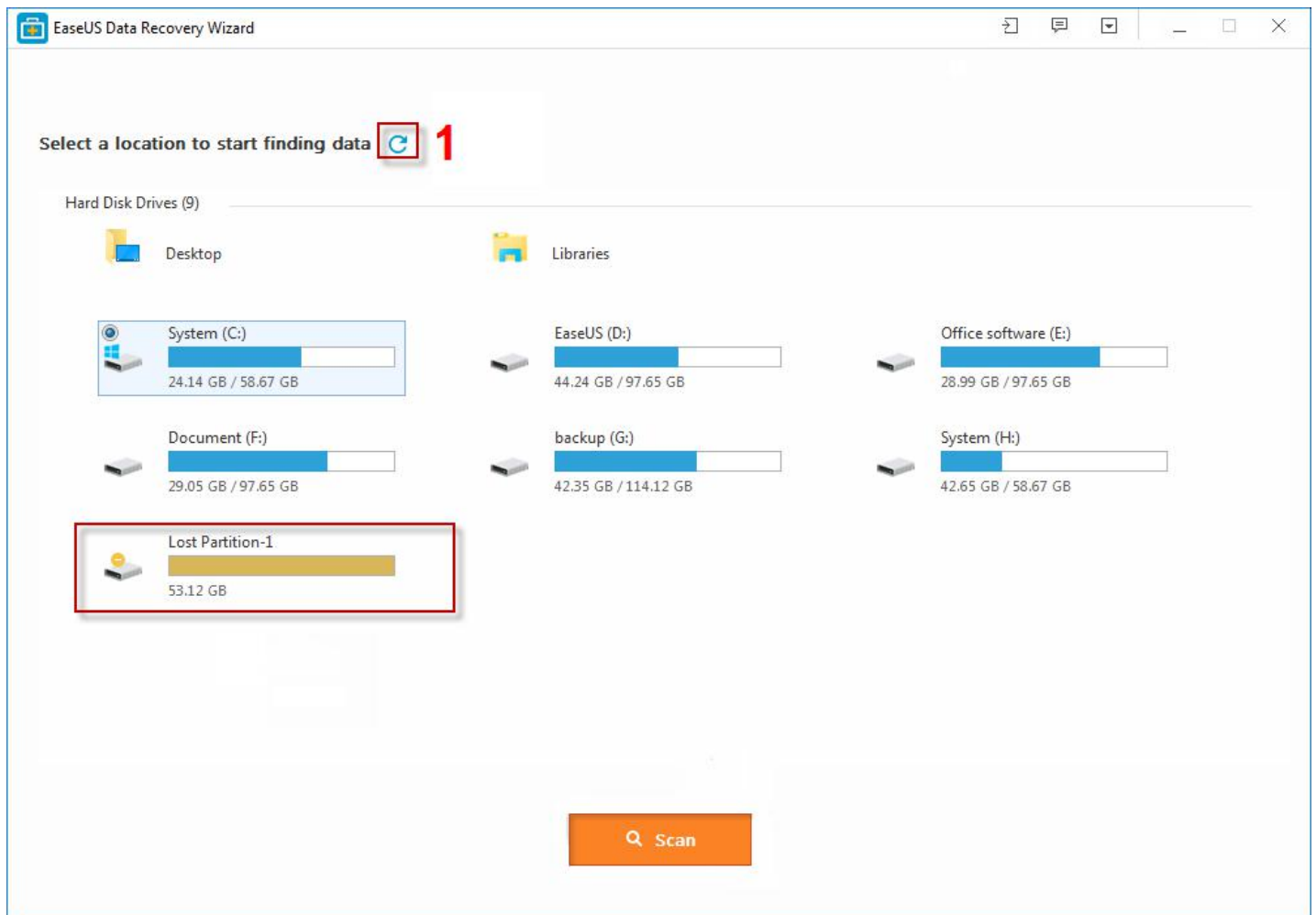
Disk Space: the minimum of the space for installing Data Recovery Wizard is 32 MB.

2. User guide

Step 1. Select the location where you lost your data

[Download](#) and launch EaseUS data recovery software, select the location where your lost your data and click **Scan** button.

If the files disappeared because the partition is deleted or lost, then just try to find a proper partition with similar capacity from Lost Partition area to proceed.



Common problems and tips:

- 1. Refresh hard drives to list any new added hard drives or try it when you cannot find the partition you want to scan in the list.*
- 2. If the related partition or hard drive cannot be found in this step, please go to Windows Disk Management to see if Windows fails to recognize it too.*
- 3. Make sure the connection of the target partition or hard drive is stable, or the process may hang up or the files found will be 0KB in size.*
- 4. If the lost data is on the System partition, you are strongly suggested to disconnect the system hard drive and connect it to another computer to recover lost files, or use our [EaseUS Data Recovery Wizard Bootable Media](#) to perform a recovery.*

Step 2. Perform a quick and deep scan to search lost files

Let the software scan the data loss location to find lost data. Here, a quick scan will start first, and then a deep scan will automatically launch in order to find more files.

Useful Tips:

1. Once a file is confirmed in the scan, our product update it in the scan result panel in real time, and the file can be saved even the scan is still processing. Next to the **Recover** button, how many files are selected in total and their amount size is clearly stated to help you choose a proper device to save the files.

2. A Pause button can help you temporarily suspend the deep scan process if you have some other more important job to do, or you think all the files you want are already found and no any further scan is required.

Noted:

- Quick Scan cannot be paused.

3. Click the title bar of Quick Scan and Deep Scan to switch between the results of the 2 different scans. And Quick scan result is ready to be checked once Deep Scan starts.

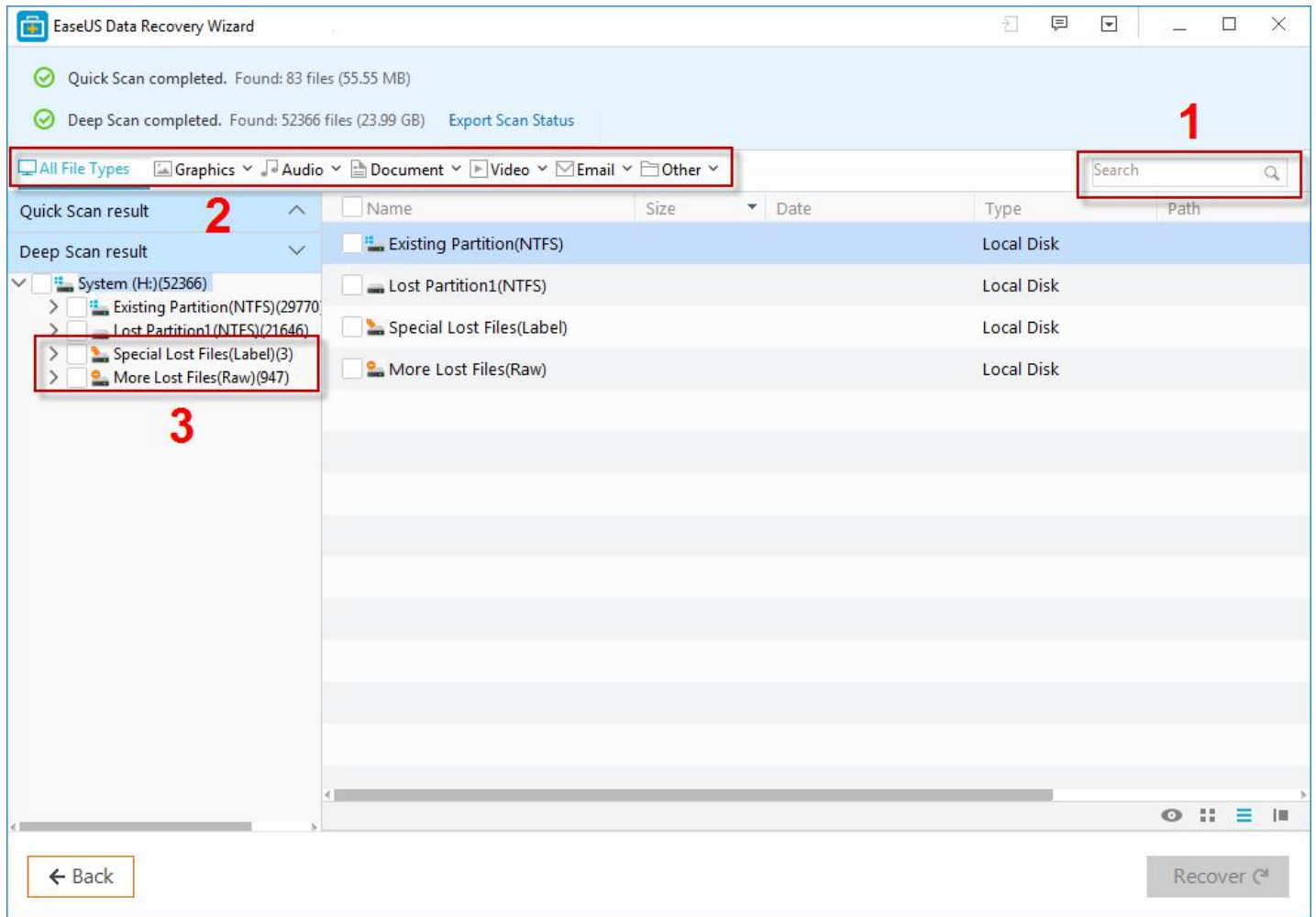
4. Only list a specific file type in the scan result to locate the files you want more accurately.

The screenshot displays the EaseUS Data Recovery Wizard interface. At the top, it shows 'Quick Scan completed. Found: 73 files (56.40 MB)' and 'Executing Deep Scan... Found: 13625 files'. A progress bar for the deep scan is visible, with a pause button and a timer showing '00:04:28'. Below the progress bar, there are filters for file types: 'All File Types', 'Graphics', 'Audio', 'Document', 'Video', 'Email', and 'Other'. The 'Quick Scan result' panel shows a tree view with 'New Volume (I:)(73)' expanded, containing 'QQMusicCache(1)', 'WOW(71)', and '\$RECYCLE.BIN(1)'. The 'Deep Scan result' panel shows a tree view with 'New Volume (I:)(13625)' expanded, containing 'System Volume Information(1)', '\$RECYCLE.BIN(1)', 'Battle.net(95)', 'Program Files (x86)(313)', 'WOW(13212)', 'QQMusicCache(1)', and 'Music (1)(1)'. The main table displays the results of the scan, with columns for Name, Size, Date, Type, and Path. The table lists several folders, including 'QQMusicCache', 'WOW', and '\$RECYCLE.BIN'. The '\$RECYCLE.BIN' folder is selected, and a red arrow points from the table to the 'Recover' button at the bottom right. The 'Recover' button is labeled 'Selected: 1 file(s), 0.13 KB'. A 'Back' button is located at the bottom left.

Name	Size	Date	Type	Path
QQMusicCache		2016/12/30 9:14:46	File folder	I:\QQMusicCache
WOW		2016/7/4 12:02:08	File folder	I:\WOW
\$RECYCLE.BIN		2016/4/14 13:11:54	File folder	I:\\$RECYCLE.BIN

Step 3. Preview and recover lost data

Preview all the recoverable files and choose those you want. Finally, click **Recover** button to retrieve them back. Please choose a different disk to save the recovered files instead of the original location to avoid data overwriting.



How to Search for required files quickly:

1. If you still have part of the file name in mind or you just require a specific file extension, enter the key word in the search box to list all related files only.

2. Only list a specific file type in the scan result to locate the files you want more accurately.

3. More Lost Files and Special Lost files folder in Deep Scan result contains lots of RAW files, the RAW files are all found from the content part of a partition which has no original file name, file size and time stamp, but worth checking.

Noted:

- *Some files can be previewed before you save them, including doc, docx, xls, xlsx, txt, bmp, jpeg, jpeg.*
- *For the case, file lost due to partition lost or become RAW, user needs to recover all files in the partition first, then rebuild the partition with the recovered files. There is no way to directly rebuild the partition with our product.*

After data recovery, we recommend you to try our [free backup software](#) to protect your files from a similar unexpected data loss disaster in the future. The program supports system backup, file backup, disk partition backup and many other advanced features.