

EaseUS® Todo Backup User Guide

For Enterprise Edition



Table of Contents

Welcome.....	- 1 -
Getting Started.....	- 1 -
Hardware Requirements.....	- 1 -
System Requirements.....	- 1 -
Supported File Systems.....	- 1 -
Supported Hard Disks.....	- 2 -
Activation.....	- 2 -
Edition Comparison.....	- 4 -
Home Page.....	- 5 -
Backup.....	- 6 -
System Backup.....	- 7 -
Disk/Volume Backup.....	- 8 -
Command Line Backup.....	- 9 -
File Backup.....	- 11 -
Smart Backup.....	- 12 -
Mail Backup.....	- 14 -
Schedule Backup.....	- 15 -
Schedule Settings.....	- 15 -
Advanced Settings.....	- 18 -
Backup Method.....	- 18 -
Backup Cleanup.....	- 18 -
Created Backup Edit.....	- 19 -
Backup Options.....	- 20 -
Cloud backup.....	- 24 -
Recovery.....	- 26 -
System Recovery.....	- 26 -
Disk/Volume Recovery.....	- 27 -
File Recovery.....	- 30 -
Smart Recovery.....	- 32 -
Mail Recovery.....	- 33 -

Browse to Recover.....	- 34 -
Individual File Recover.....	- 35 -
System Transfer.....	- 35 -
Clone.....	- 38 -
Disk Clone.....	- 38 -
Partition Clone.....	- 40 -
System Clone.....	- 41 -
Advanced Server.....	- 44 -
Exchange Backup.....	- 44 -
SQL Backup.....	- 46 -
Tools.....	- 48 -
Import/Export Task.....	- 49 -
Check Image.....	- 53 -
Create Emergency Disk.....	- 53 -
Tape Manager.....	- 54 -
Enable/Disable Pre-OS.....	- 54 -
iSCSI Initiator.....	- 55 -
Enable PXE.....	- 55 -
P2V Copy.....	- 56 -
P2V Recovery.....	- 57 -
P2V Conversion.....	- 58 -
Mount/Unmount.....	- 59 -
Refresh Disk.....	- 60 -
Special Tools in WinPE.....	- 60 -
Windows Shell Command.....	- 61 -
Driver Manager.....	- 61 -
Network Manager.....	- 61 -
Fix MBR.....	- 62 -
Check Partition.....	- 62 -
Image Tool.....	- 62 -
Logs.....	- 65 -
Basic Settings.....	- 66 -
Support.....	- 67 -

Welcome

Thank you for using **EaseUS Todo Backup**. Being an integrated solution for crucial data and powerful OS protection, **EaseUS Todo Backup** is spread over millions of home computers, business workstations and servers. Focusing on efficient and stable backup, **EaseUS Todo Backup** is dedicated to safeguarding the operating system, emails, disks, partitions, documents, photos, pictures and musics, etc.

EaseUS Todo Backup generates the .pbd images for your reliable backups, which are to be promptly and easily recovered in the case of system crash, partition/disk corruption, virus infection and unexpected data loss, etc. Being distinguished from OEM backup solutions, NO extra hidden partitions are to be created or required on your hard drive to get EaseUS Todo Backup perform a backup or restore.

Getting Started

This part outlines basic parameters to use **EaseUS Todo Backup**. It is to help you acquire a general understanding before you get started.

Hardware Requirements

500 MHz processor or faster

A minimum of 1 gigabytes (GB) RAM; A minimum of 2 GB RAM for Window 8/8.1/10

A minimum of 1 GB of available space on the hard disk

CD-R/RW, DVD-R/RW, DVD+R/RW or DVD+R DL drive

Keyboard, mouse and other compatible pointing devices

System Requirements

Supported Operation System:

- Windows XP®
- Windows Vista®
- Windows® 7
- Windows® 8
- Windows® 8.1
- Windows® 10
- Windows Server® 2003
- Windows Server® 2008
- Windows Server® 2008 R2
- Windows Server® 2012
- Windows Server® 2012 R2
- Windows Server® 2016
- Windows Small Business Server 2003
- Windows Small Business Server 2008
- Windows Small Business Server 2011

Supported File Systems

FAT12, FAT16, FAT32 and NTFS file systems are fully supported in **EaseUS Todo Backup**.

All the other file systems are listed as Other in **EaseUS Todo Backup**. The software

automatically switches to the Sector by Sector mode when backing up or cloning drives with Other file systems.

Supported Hard Disks

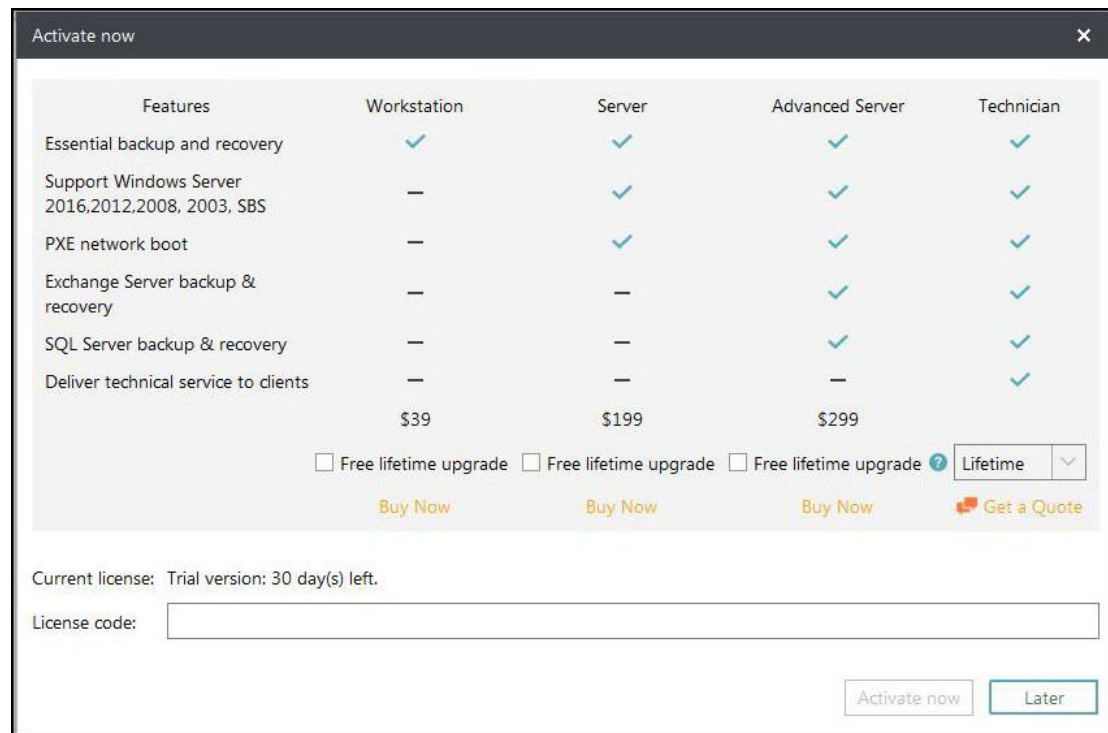
EaseUS Todo Backup supports hard drives with IDE, EIDE, SATA, ESATA, ATA, SCSI, iSCSI, USB 1.1/2.0/3.0 disk and Firewire ports for backup and clone.

All the above mentioned hard drives, along with CD-R/RW DVD-R/RW DVD+R/RW DVD+R DL are supported storage devices to preserve **EaseUS Todo Backup** images.

Dynamic disk, MBR and GPT disks are supported. EaseUS Todo Backup supports the disk capacity up to **16TB**.

Activation

An activation window is prompted when you launch EaseUS Todo Backup Trial first time. Enter the code consisted of 25 digits and letters in Trial to upgrade to full version.



Features	Workstation	Server	Advanced Server	Technician
Essential backup and recovery	✓	✓	✓	✓
Support Windows Server 2016, 2012, 2008, 2003, SBS	—	✓	✓	✓
PXE network boot	—	✓	✓	✓
Exchange Server backup & recovery	—	—	✓	✓
SQL Server backup & recovery	—	—	✓	✓
Deliver technical service to clients	—	—	—	✓
	\$39	\$199	\$299	

☐ Free lifetime upgrade
 ☐ Free lifetime upgrade
 ☐ Free lifetime upgrade
 ?
Lifetime
▼

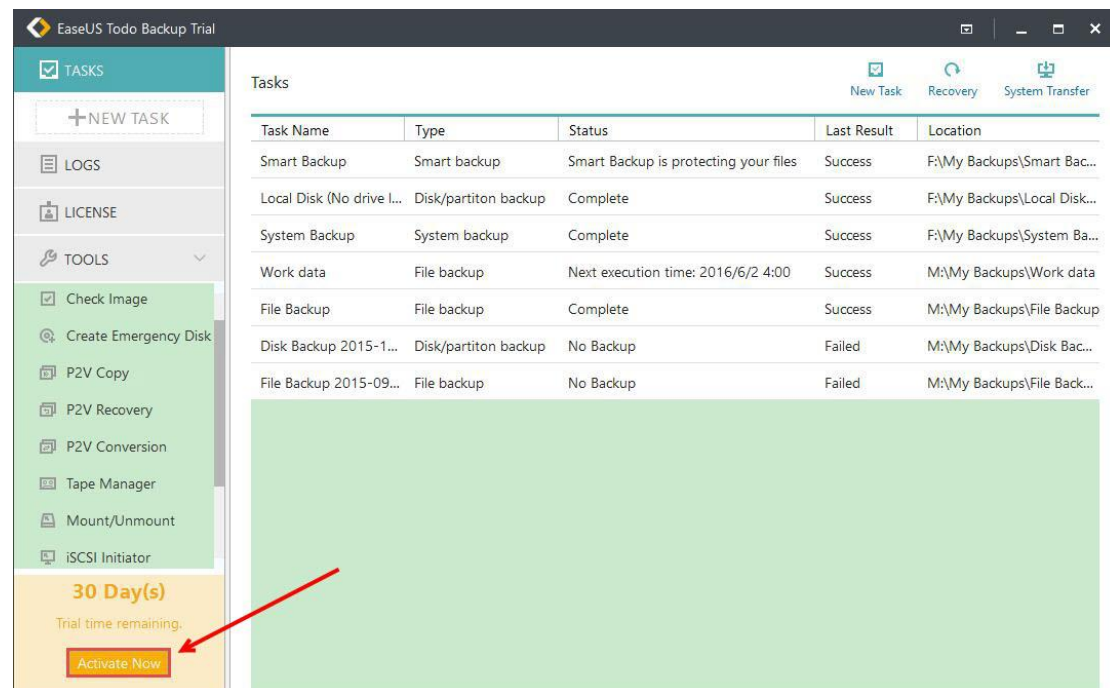
[Buy Now](#)
[Buy Now](#)
[Buy Now](#)
[Get a Quote](#)

Current license: Trial version: 30 day(s) left.

License code:

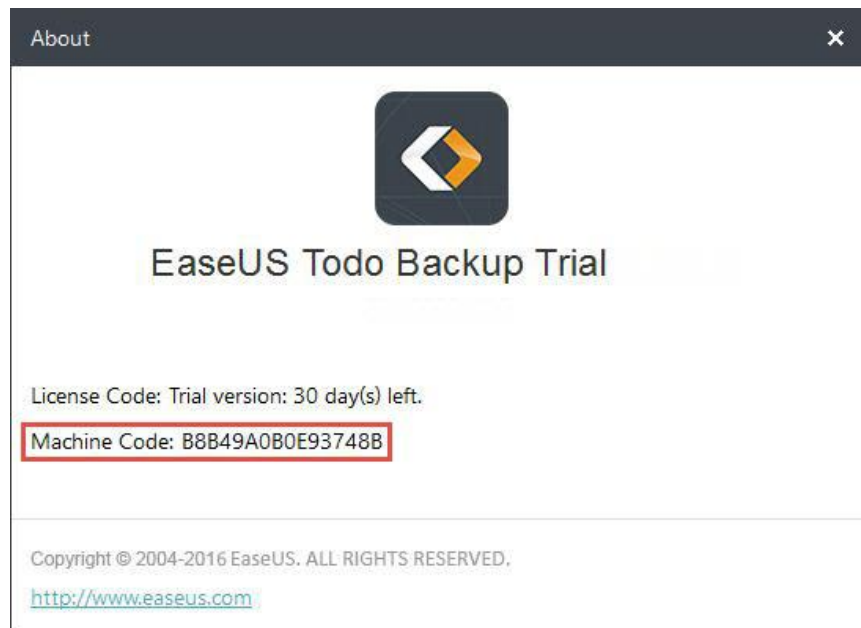
[Activate now](#)
[Later](#)

Click **Later** to start the 30-day trial experience. Move your mouse to **Activation Now** at the left bottom to get back activation window.



Offline Activation

To get offline activation when your computers is off Internet connection, please click [here](#).



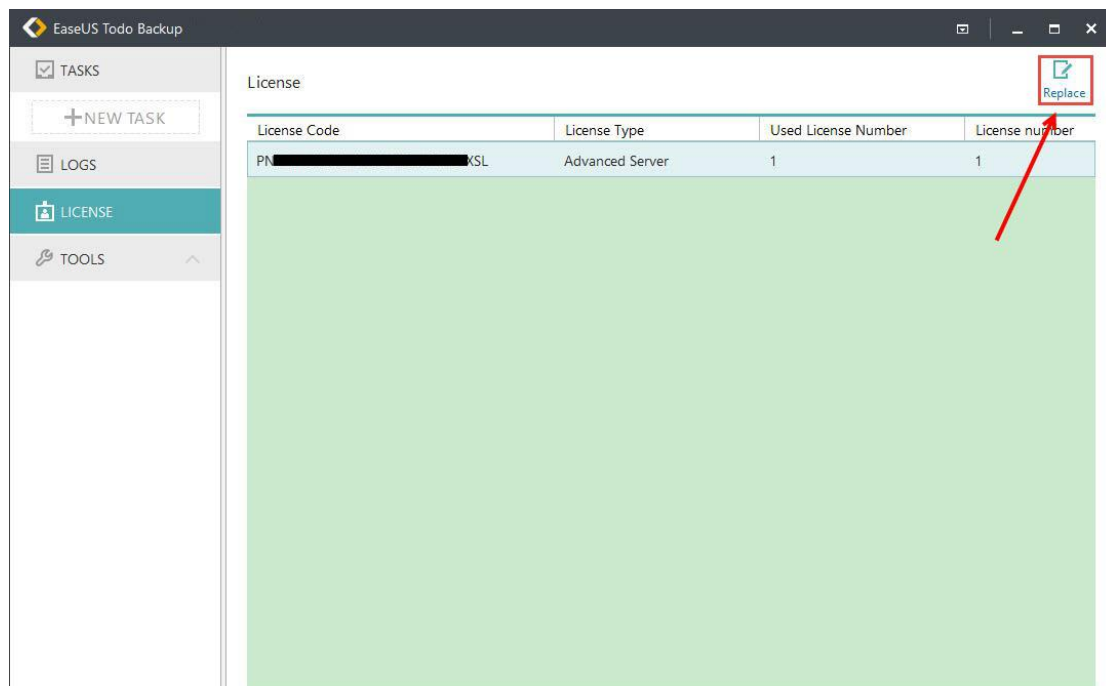
Tips:

Machine code is a unique ID generated by EaseUS Todo Backup on the basis of your hardware information. It is closely tied with license code.

Replace License Code

To replace the previous code with a new one, please click **LICENSE** at the left column and

then locate **Replace** at the right top of EaseUS Todo Backup.



Note:

Each edition has its own license code. Only the codes to the same edition can be replaced.

Edition Comparison

EaseUS Todo Backup Enterprise includes four different editions, Workstation, Server, Advanced Server and Technician.

Workstation, Server, Advanced Server is activated with Trial. Technician uses a separate installation file.

Trial version is fully functioned with 30-day trial period. To test Technician before purchase, please use Trial.

Workstation Edition - Commercial version for business users. It has more features available, such as Backup/clone dynamic volume, System Transfer and Virtualization, etc.

Server Edition - Commercial version for Windows Server users. It inherits all the features of Workstation edition and can support all Windows Server OS.

Advanced Server Edition - Advanced version for Windows Server users. It supports backing up Exchange server and Microsoft SQL besides the basic options standard server edition has.

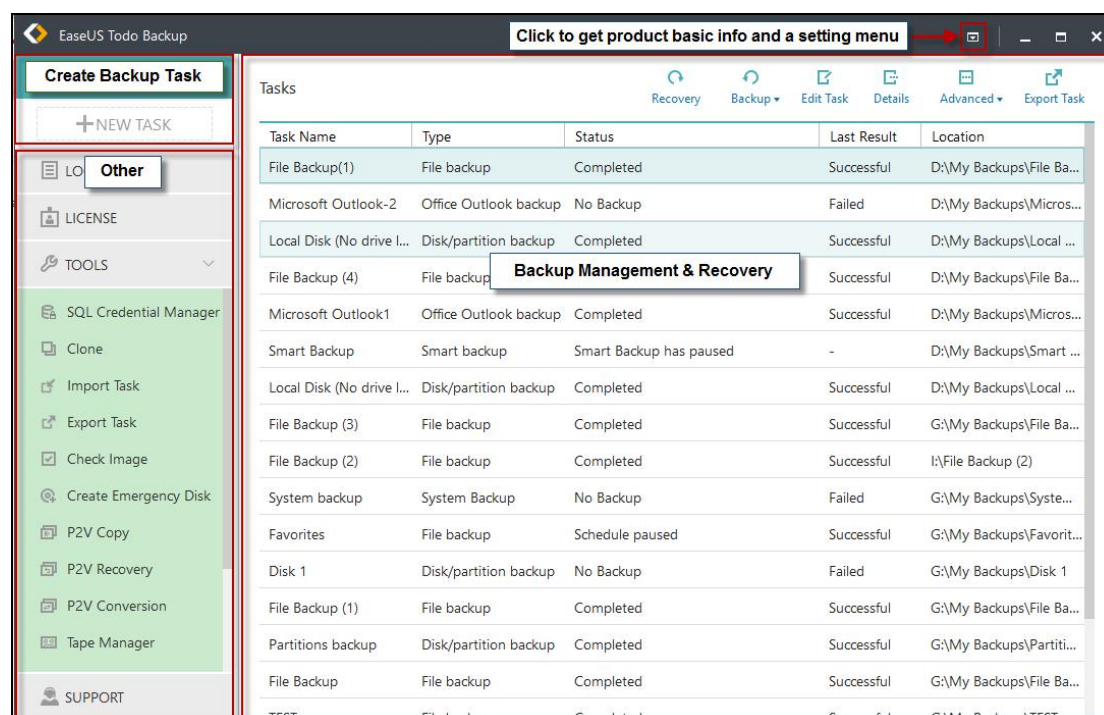
Technician Edition - It is designed for IT professionals, system administrators, and technicians to provide technical services with unlimited usage. It covers all the features of Advanced Server edition.

Feature Comparison

	Workstation	Server	Advanced server	Technician
Smart Backup	Y	Y	Y	Y
Disk/Partition backup	Y	Y	Y	Y
File backup	Y	Y	Y	Y
Incremental/Differential backup	Y	Y	Y	Y
Backup/clone dynamic volume	Y	Y	Y	Y
Schedule backup	Y	Y	Y	Y
System backup	Y	Y	Y	Y
Image-reserve Strategy	Y	Y	Y	Y
System Transfer	Y	Y	Y	Y
Backup MS SQL Server			Y	Y
Backup Exchange Server			Y	Y
Back up to tape	Y	Y	Y	Y
WinPE emergency disk	Y	Y	Y	Y
Enable PreOS	Y	Y	Y	Y
Windows right click backup menu	Y	Y	Y	Y
Support Microsoft Server OS		Y	Y	Y
Virtualization (P2V)	Y	Y	Y	Y
Outlook backup	Y	Y	Y	Y
Email notification, pre/post-command	Y	Y	Y	Y
File Exclusion	Y	Y	Y	Y
Command line backup	Y	Y	Y	Y
Cloud backup	Y	Y	Y	Y

Home Page

Great improvements on UI has been made starting from Version 9.2, hoping to maintain the routine backup jobs in a more easily and smoothly way. The new home page constitutes three main areas.



Create Backup Task

NEW TASK area is the entrance to all available backup options. To create a new backup task, please click **NEW TASK**.

For more details on various backups, please refer to:

[Disk/Volume backup](#), [System backup](#), [File Backup](#), [Smart Backup](#), [Exchange Backup](#), [Mail Backup](#), [SQL Backup](#).

Backup Management & Recovery

Backup Management & Recovery area lists all the created backup tasks whose basic information is explicitly shown in the list, such as task name, image location and status and so on.

As a kindly reminder, there are two separate recovery options, [System Transfer](#) and [Recovery](#), when no backup task is selected. There will be only one recovery option, Recovery, after one backup task is selected.

Others

Others area includes [Clone](#) option, [Logs](#) and other [useful tools](#).

Backup

Backup generally refers to creating copies of important data. With these copies, you can recover your data after an unexpected computer disaster. Therefore, the main purpose of backup can be summarized as an effective remedy for system failure or data loss.

The benefits to protect your system with a regular backup tool:

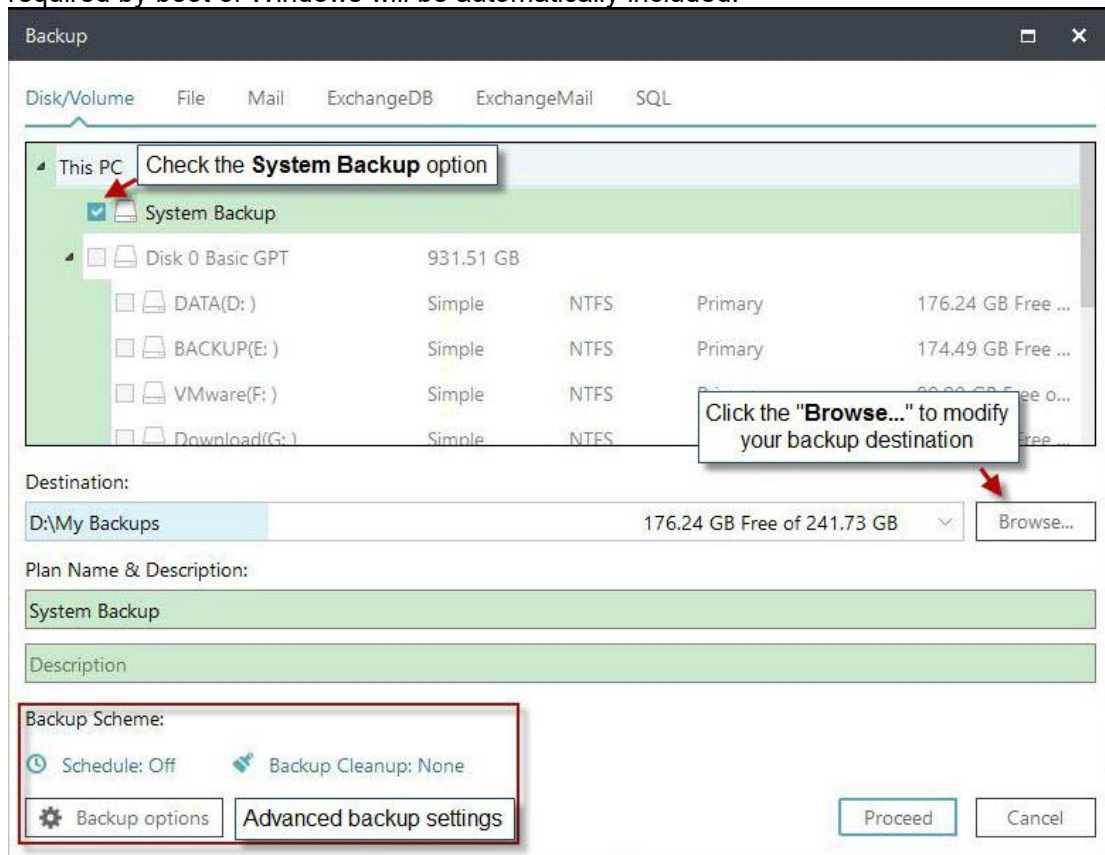
1. Backup can be scheduled (e.g. regular automatic backups that require no user interaction);
 2. Backup changes can be appended incrementally or differentially (i.e. after a full backup, subsequent backups will take less time and occupy less space than the first one);
 3. Backups allow you to keep several versions of the backed up data and you can restore to one of the previous versions (e.g. you can keep backups from one, two and three weeks ago on the same disk and you can recover the backup from the moment that you need);
 4. Backup can be mounted and searched through (e.g. if you want to quickly find, view and copy a file from it).
- User can easily get system running again after recovering a system image file to original drive even a new drive.

Tips:

In order to ensure a rapid and successful backup process, please close all other applications before starting the operation and never try to save the image file to the partition/disk which you are backing up.

System Backup

As is well known, Windows Operation System is critically important. To protect it in case of system crash is the main concern. EaseUS Todo Backup provides the easiest way for system protection with **System Backup**. Starting from Version 9.2, you need to click Disk/Volume Backup and then check System Backup where the necessary partitions required by boot of Windows will be automatically included.



Basic Settings:

Destination - Click the "**Browse...**" to modify your backup destination.

Plan name & Description - An accurate plan name and appropriate description can help you find the desired image file easily.

Advanced backup settings

Advanced backup settings are useful when you want to create a flexible and automatic backup plan. **Schedule** is to create an automatic backup plan. **Backup options** is to edit the advanced parameters. **Backup Cleanup** is to reserve the limited image as per image retention rule.

For more details, please click:

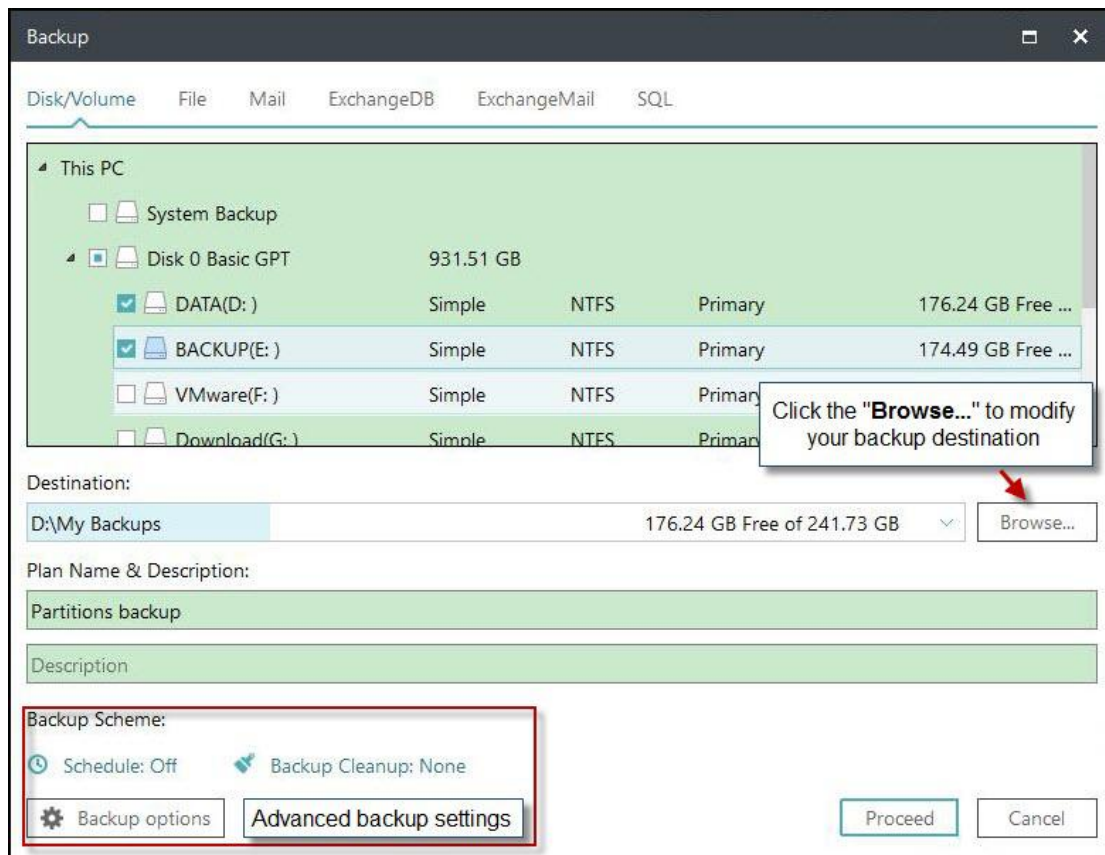
[Schedule](#), [Backup option](#), [Backup Cleanup](#).

Tips:

Advanced backup settings are for reference only but not a prerequisite for backup.

Disk/Volume Backup

Suppose there is only one disk with more one partitions on your computer. System Backup is to back up the partition only where the system and boot partitions are saved. In this case, you should use **Disk/Volume Backup** to help you back up the rest data partition.



Basic Settings:

Destination - Click the "Browse..." to modify your backup destination.

Plan name and **Description** - An accurate plan name and appropriate description can help you find the desired image file easily.

Advanced backup settings

Advanced backup settings are useful when you want to create a flexible and automatic backup plan. **Schedule** is to create an automatic backup plan. **Backup options** is to edit the advanced parameters. **Backup Cleanup** is to reserve the limited image as per image retention rule.

For more details, please click:

[Schedule](#), [Backup option](#), [Backup Cleanup](#).

Tips:

Advanced backup settings are for reference only but not a prerequisite for backup.

FAQ:

1. What's the difference between System Backup and Disk/Volume Backup?

A: Please click [here](#) to view the answer.

2. Can I back up the network drive?

A: No, EaseUS Todo Backup can just help you back up the files and folders on network drive. It cannot back up the whole network drive.

3. Where should I save backup image file?

A: You can save backup image to local hard drive, network drive, or other storage device. Please don't save the backup image to the same partition which you are willing to back up.

4. What is dynamic volume? Does EaseUS support its backup?

A: Dynamic volume is a part of a dynamic disk. Dynamic disk manages the volumes with a LDM (short for Logical Disk Manager) database. Compared with basic disk, dynamic one is divided into multiple types of volumes. Most dynamic volumes have advanced features in data storage, such as data redundancy in a Mirrored volume and fault-tolerant features in a RAID-5 volume.

Backup is supported. The backup process is the same as disk/partition backup on basic disk. One big difference lies in display. To be more precise, all the volumes on different disks are listed all together.

Command Line Backup

EaseUS Todo Backup Command Line is to directly create and execute backup task in Windows command line without pop-up windows. It supports creating disk backup, partition backup and system backup.

Make sure you are running Windows Command Prompt as an Administrator. Then run the command, **etbcmd**, to launch EaseUS Todo Backup Command Line tool:



```
Administrator: Command Prompt
Microsoft Windows [Version 10.0.10240]
(c) 2015 Microsoft Corporation. All rights reserved.

C:\WINDOWS\system32>etbcmd
EaseUS Todo Backup command line tool. Version:
```

All the commands and parameters are listed below:

```

/a <action>          Specify the operation to execute.
                     list: Check disk/partition details
                     create: Create backup task
                     execute: Execute backup task immediately
/?                  EaseUS Todo Backup command line help information.

Operation:list
/d <disk>            Select disk number to view. If the disk number is not specified, all disk
                     information will be displayed.
/?                  EaseUS Todo Backup command line help information.

Operation:create
/n <name>            Set backup task name. If the specified task already exists, it will
                     automatically add number (1), (2)... after the task name.
/d <description>     (Optional) Add task description.
/s <source>          Specify backup source (such as system backup, disk backup or partition
                     backup)
                     For example: /s system System backup /s 1,2,3:2,F Back up Disk1, Disk 2,
                     Partition 2 of Disk 3 and Partition F:
/1 <location>        (Optional) Specify storage path of backup image (local or network path is
                     available). If no storage path is specified, the backup image will be saved
                     in default path.
/u <username>        (If set to back up to network storage, network credential info is needed)
                     Network access username.
/p <password>        (If set to back up to network storage, network credential info is needed)
                     Network access password.
/e <encrypt>         (Optional) Set image encrypted password.
/c <compress>        (Optional) Set image compression level. If the parameter is not set, the
                     image compression level is normal.
                     0: no compression
                     1: normal compression
                     2: medium compression
                     3: high compression
/i <splitting>       (Optional) Set image splitting size(MB). If the parameter is not set or it
                     is set to 0, the image won't be split.
/r <raw>              (Optional) Execute sector-level backup. If the parameter is not set, the
                     non-sector-level backup will be executed.
                     0: non-sector-level backup
                     1: sector-level backup
/t <silent>          (Optional) Silent mode. If the parameter is not set, it defaults to
                     non-silent mode.
                     0: non-silent mode
                     1: silent mode
/?                  EaseUS Todo Backup command line help information.

Operation:execute
/n <name>            Set backup task name.
/t <type>            Specify backup type. If the parameter is not specified, the backup type is
                     full backup.
                     inc: incremental backup
                     dif: differential backup
                     full: full backup
/s <silent>          (Optional) Silent mode. If the parameter is not set, it defaults to
                     non-silent mode.
                     0: non-silent mode
                     1: silent mode
/?                  EaseUS Todo Backup command line help information.

```

Here is an example to illustrate creating a partition backup:

```

For example:
etbcd.exe /a create /n "Demo Task" /d "This is a Demo Task" /s 0:1 /1 "D:\my backup" /e "password" /c 1 /i 0 /r 0 /t 0

```

Before creating a backup, please list all partitions and disks to locate the desired one for backup.


```
C:\WINDOWS\system32>etbcd /a list
```

ID	Letter	Type	Capacity	Used	Unused	State	Primary	Start (MB)
0	*	Unknown	300.00 MB	300.00 MB	0Bytes	None	Primary	1
1	*	Unknown	100.00 MB	100.00 MB	0Bytes	System	Primary	301
2	*	Unknown	128.00 MB	128.00 MB	0Bytes	None	Primary	401
3	C: System	NTFS	77.41 GB	57.19 GB	20.22 GB	Boot	Primary	529
4	*	Unknown	450.00 MB	450.00 MB	0Bytes	None	Primary	79796
5	D: VMware	NTFS	79.10 GB	75.82 GB	3.28 GB	None	Primary	80246
6	E: Work	NTFS	78.13 GB	32.95 GB	45.18 GB	None	Primary	161244
7	F: Download	NTFS	62.50 GB	20.27 GB	42.23 GB	None	Primary	241244

To back up operating system with System Backup, please type “/s system”. Then EaseUS Todo Backup intelligently help you back up OS which is also known as the partitions where system and boot partitions are saved.

To manually back up operating system with Disk/Partition Backup, please type the command listed below:

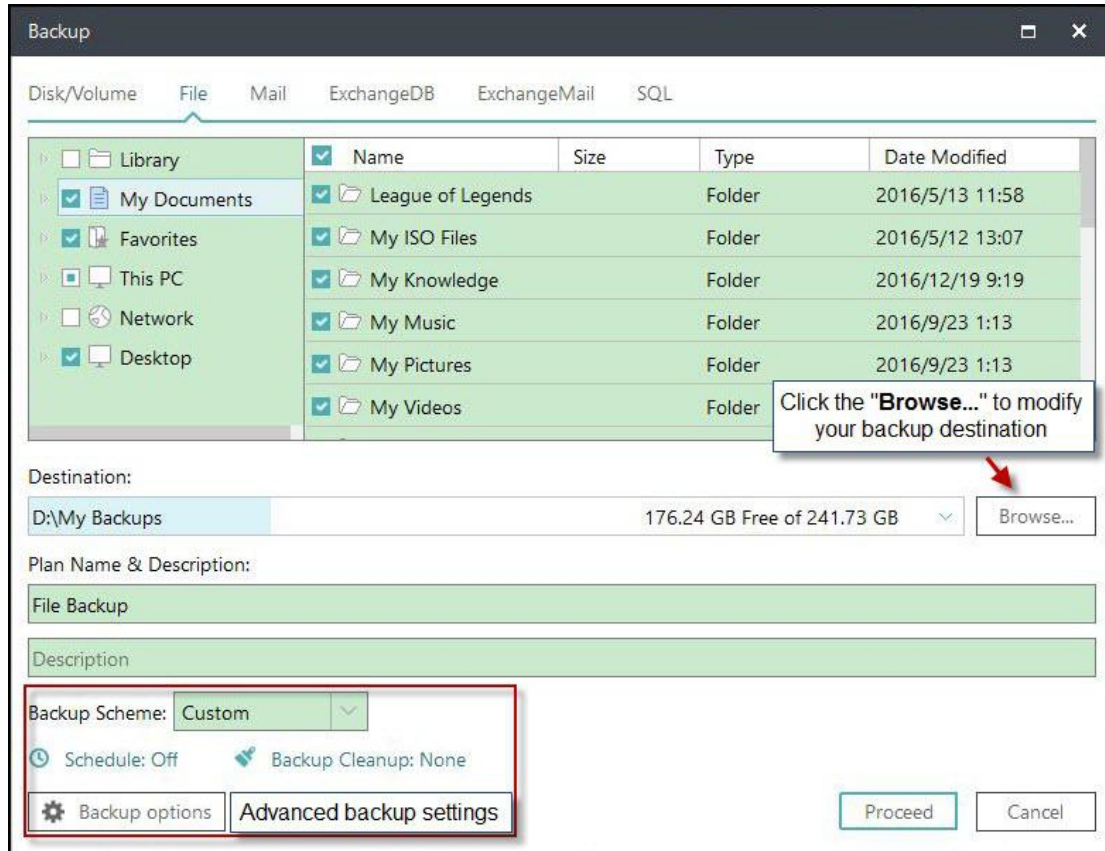
```
C:\WINDOWS\system32>etbcd.exe /a create /n "Demo Task" /d "This is a Demo Task" /s 0:1,0:3 /l "F:\my backups" /e "123456" /c 1 /i "4096" /r 0 /t 0
Task name: Demo Task (1)
Compress level: Normal compression
The image is encrypted
Backup task type: Local Full Disk Backup
The content of backup: C:\ partitions and 1 partitions without drive letter (Unknown Partition).
Initializing backup, please wait...
Checking file system on partition 4 of disk 0 (C:\).
Todo Backup has checked the partition and found no problems.
Backup is running, please wait patiently.
Analyzing file system on partition 4 of disk 0 (C:\).
Backing up file system on partition 4 of disk 0 (C:\).
Process: 23%...
```

To save images to network drive, the correct command for destination is:

```
C:\WINDOWS\system32>etbcd /a create /n Demo /s 0:1 /l \\192.168.1.110\Backup /u zhihui /p easeus
Task name: Demo
Compress level: Normal compression
The image is unencrypted
Backup task type: Local Full Disk Backup
The content of backup: 1 partitions without drive letter (Unknown Partition).
Initializing backup, please wait...
Backup is running, please wait patiently.
Analyzing file system on partition 1 of disk 0.
Backing up file system on partition 1 of disk 0.
Process: 82%...
```

File Backup

You may have a large amount of vital data to be protected as time goes on, such as documents, pictures, musics and videos, etc. It is always a good habit to have a backup on regular basis. File Backup is one of the best choices for you to get over unexpected data loss.



Basic Settings:

Destination - Click the “**Browse...**” to modify your backup destination.

Plan name & **Description** - An accurate plan name and appropriate description can help you find the desired image file easily.

Advanced backup settings

Advanced backup settings are useful when you want to create a flexible and automatic backup plan. **Schedule** is to create an automatic backup plan. **Backup options** is to edit the advanced parameters. **Backup Cleanup** is to reserve the limited image as per image retention rule.

For more details, please click:

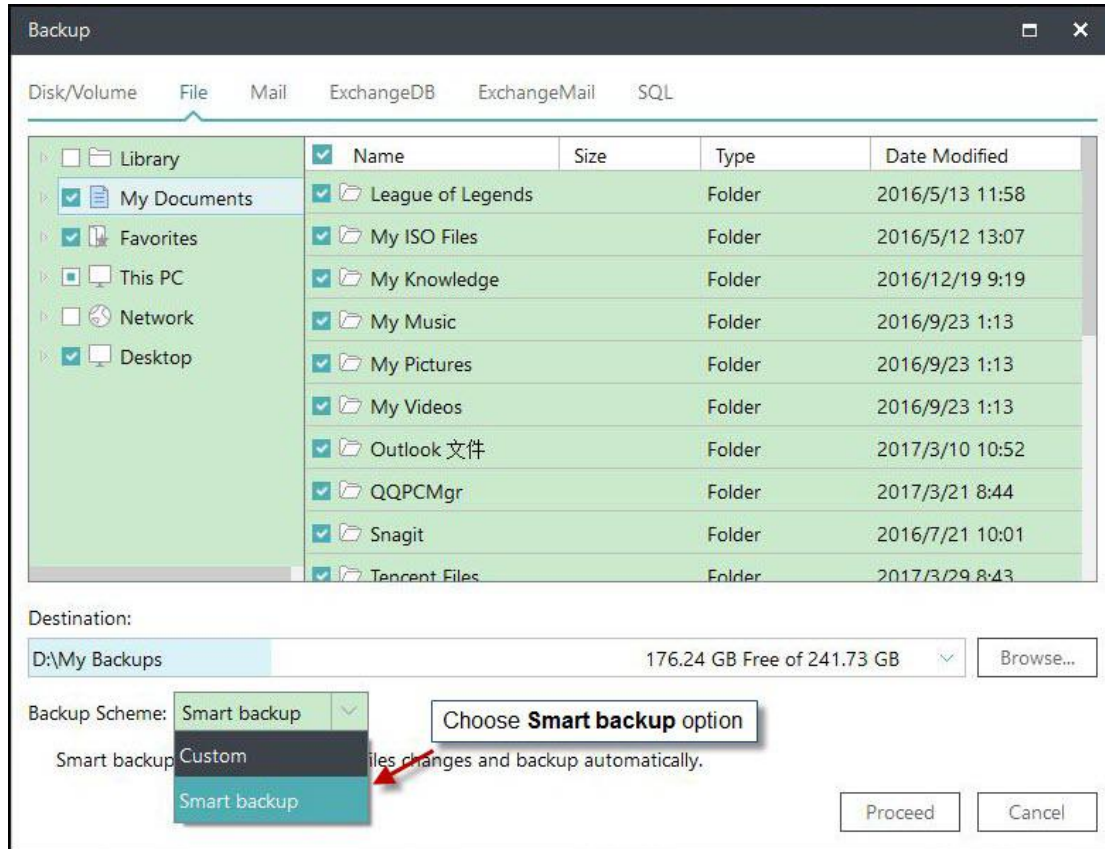
[Schedule](#), [Backup option](#), [Backup Cleanup](#).

Tips:

Advanced backup settings are for reference only but not a prerequisite for backup.

Smart Backup

Smart Backup is affiliated to File Backup starting from Version 9.2. A scheduled backup is performed every half an hour provided any changes are made in Smart Backup.

**Note:**

Smart Backup does not support disk or partition backup.

Files/folders saved in network drive is not supported by Smart Backup.

When You Need Smart Backup**Cases:**

1. To back up database files that are frequently changed;
2. To back up shared files that are frequently updated;
3. Want to create multiple backup points for the recovery or rollback.

What You Get with Smart Backup

Before you move to what you are going to get with Smart Backup, you may need to have a knowledge of [the differences among full, incremental and differential](#) backup.

The first image of Smart Backup is always full. There will be a new full image created every seven days. The first images on each seventh days are Full.

The first image on rests days are differentials. The rest images on rest days are incrementals. There are no differentials on each seventh days as there are fulls already.

No backups created on invalid days. It is deemed to be an invalid day when your computer happens to be powered off or become nonfunctional.

How Smart Backup Manages Images

To avoid insufficient disk in destination, Smart Backup automatically deletes images as followed:

1. All the **Incrementals** created on yesterday will be deleted with the completion of today's first image.
2. As we have stated before, there should be 6 Differentials at most. So the last Differential will be deleted with the completion of next one. For example, Differential created on 2nd day will be deleted with the completion of Differential on 8th day.
3. Likewise, there should be 2 Fulls at most. In this case, you are limited to restore the images in the past 15 days.

Tips:

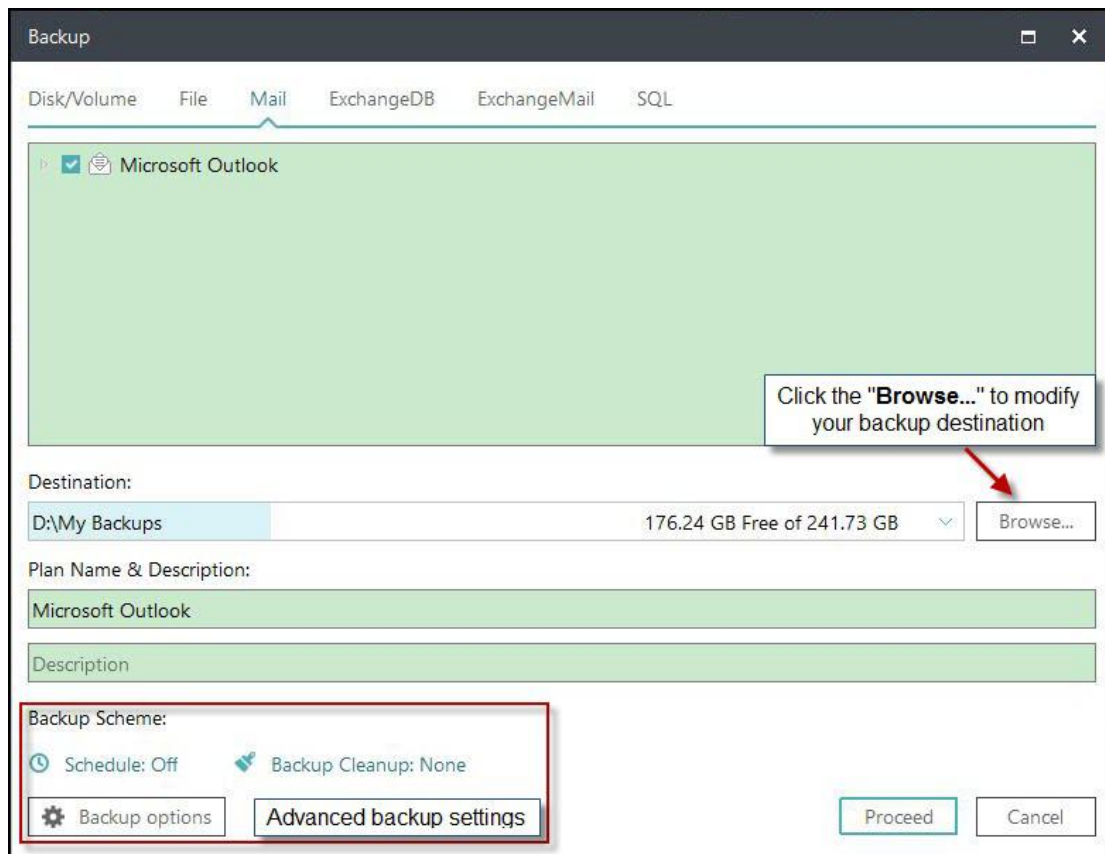
*Smart Backup supports to back up the folders/files by right click in Windows Explorer. Select **Create Smart Backup for selected file(s)** in Windows menu to start smart backup.*

Mail Backup

Communication via email is still a popular manner and Microsoft Outlook is the most popular email application. After a long time using, you may have many important mails to be backed up. Then EaseUS Todo Backup can also become your guardian to protect the mails.

Tips:

Windows live mail and Mozilla Thunderbird are not supported.



Specify contents for backup. You may choose to back up whole mailbox, individual folder(s), Contacts and Calendar, etc.

Basic Settings:

Destination - Click the “**Browse...**” to modify your backup destination.

Plan name & Description - An accurate plan name and appropriate description can help you find the needed image file easily.

Advanced backup settings

Advanced backup settings are useful when you want to create a flexible and automatic backup plan. **Schedule** is to create an automatic backup plan. **Backup options** is to edit the advanced parameters. **Backup Cleanup** is to reserve the limited image as per image retention rule.

For more details, please click:

[Schedule](#), [Backup option](#), [Backup Cleanup](#).

Tips:

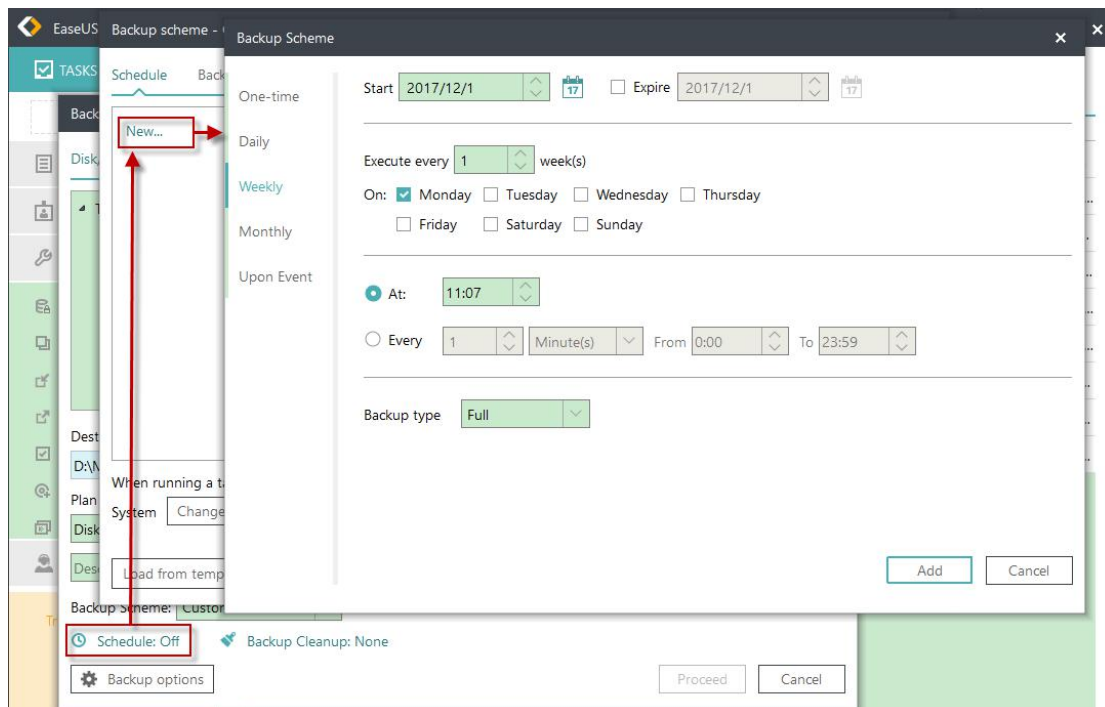
Advanced backup settings are for reference only but not a prerequisite for backup.

Schedule Backup

Scheduled backup runs automatically in a regular time interval or at a specified time point.

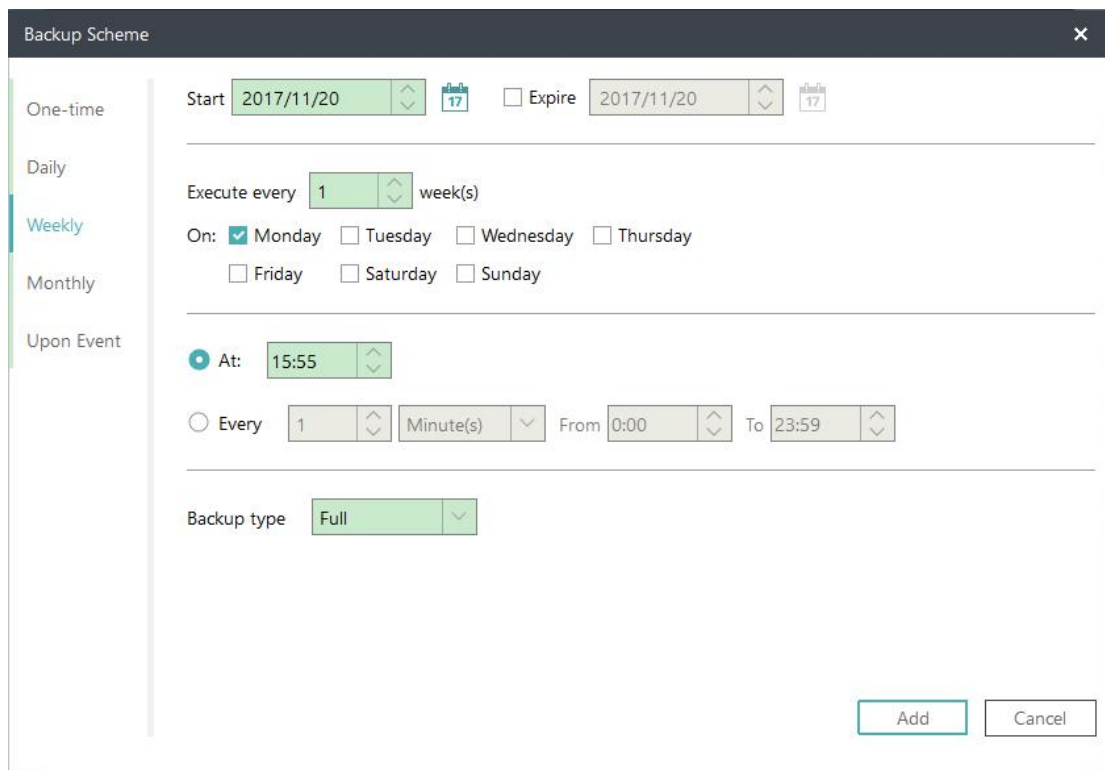
Here you are going to have a brief idea on how to configure all the schedule settings and image retention rule.

Schedule Settings



Schedule Time

EaseUS Todo Backup provides **five** Schedule Types.



Backup Scheme

One-time Start ☐ Expire

Daily

Weekly Execute every week(s)

On: ☒ Monday ☐ Tuesday ☐ Wednesday ☐ Thursday ☐ Friday ☐ Saturday ☐ Sunday

Monthly

Upon Event

☒ At:

☐ Every Minute(s) From To

Backup type

One-time

Set a specific time point to execute the backup once.

Daily

Execute backup in date period - Set start date and expire date for the plan.

Execute backup every X day(s) at the specific time point.

Or execute backup every X day(s) and every X hour(s)/minutes(s) from start time to expire time.

Suppose start time is at 6:00 am and finish time at 10:00 am with 2-hour interval time.

Backups will be executed for three time at different time points, 6:00 am, 8:00 am and 10:00 am.

Weekly

Execute backup in date period - Set start date and expire date for the plan.

Execute backup every X week(s) on the specific day(s) at the specific time point.

Or execute backup every X week(s) on the specific day(s) and every X hour(s)/minutes(s) from start time to expire time.

Monthly

The backup is to be automatically executed in the specific month(s) at the scheduled time, which may be based on date or week. You can also specific every X hour(s)/minutes(s) from start time to expire time on specific day(s) in specific month(s).

Upon event

The backup is to be automatically executed in the event of:

System startup - Backup runs automatically when system starts up.

System shutdown - Backup runs automatically when system is shutdown.

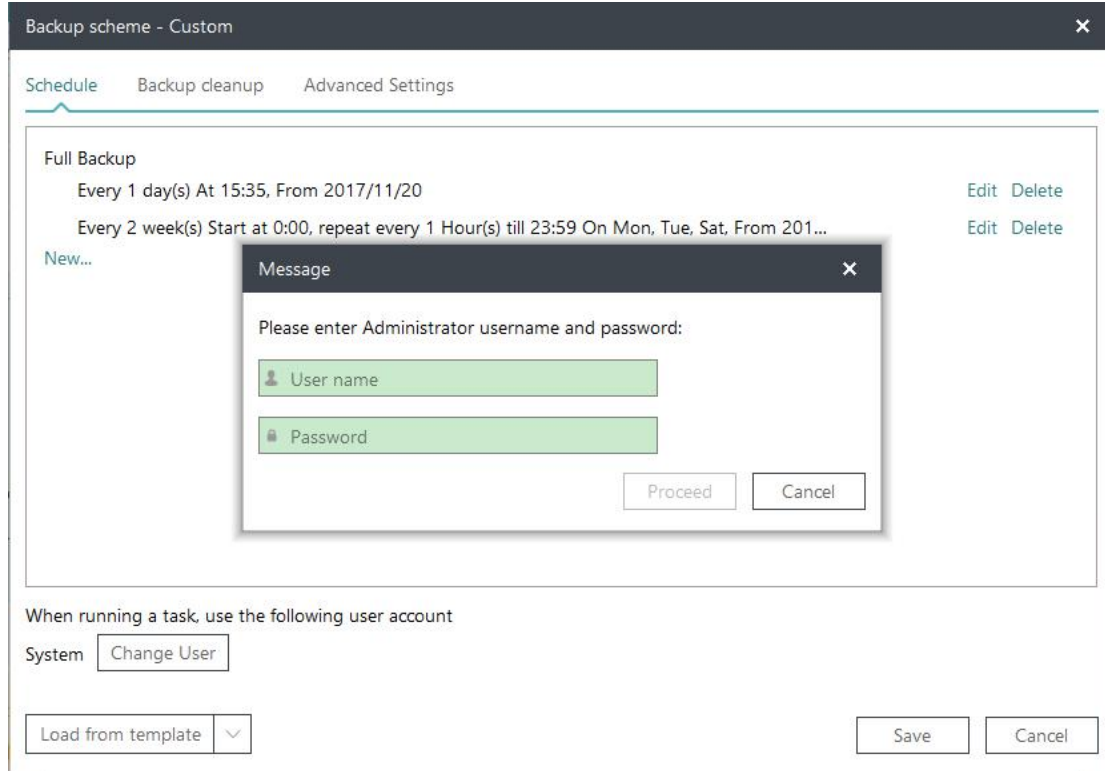
User log on - Backup runs automatically when Windows logs in.

User log off - Backup runs automatically when Windows logs off.

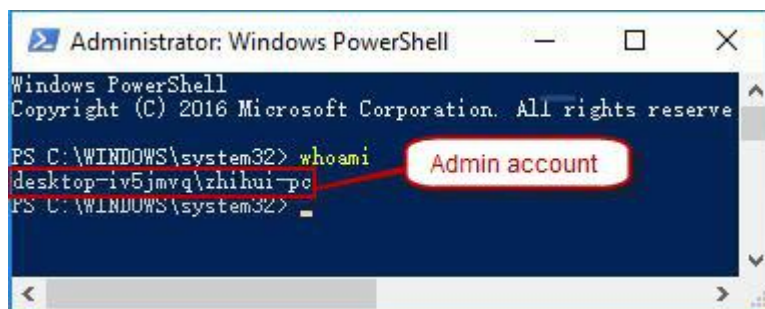
USB device plugged in - Backup runs automatically when USB device is plugged in provided that it is set to be the destination.

User Account

EaseUS Todo backup uses administrator account permission to run schedule backup, the default account is the system account on this computer. If the account doesn't have admin permission to run schedule, you need to add a local administrator account and password.



To locate an Admin account on the computer, you can use "Whoami" command:



Load from template/Save as template

To save the created schedule as template, or load a saved template

Note:

1. Each rule in schedule backup can be modified or removed.
2. With different priority level (full-high, differential-normal, incremental-low), there will be no any conflict when different rules are set to run at a same minute.
3. Backups with different priority will be executed from high to low in sequence. And for those even have same priority, our product will perform only one of them to avoid duplication.

Advanced Settings

Wake the computer to run this backup

By ticking this option, the computer will be automatically waked up at the schedule time to run backup when it is sleeping or hibernating.

Prevent Windows from going to sleep or hibernate when backup is running

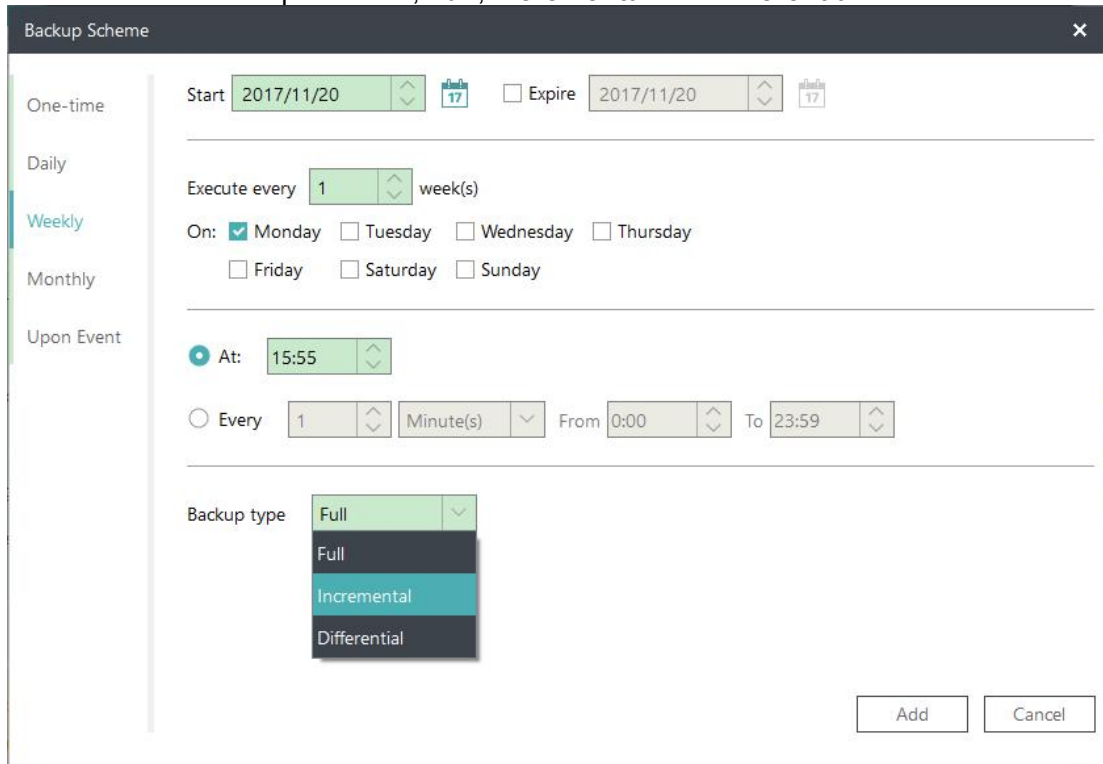
This option is able to prevent Windows from going to sleep or hibernate when backup is running.

Run missed backup at system startup if computer is shutdown

By ticking this option, the latest missed backup will be automatically executed at the startup of Windows in the case that your computer happens to be shutdown or power failure in Daily, Weekly or Monthly scheduled backup.

Backup Method

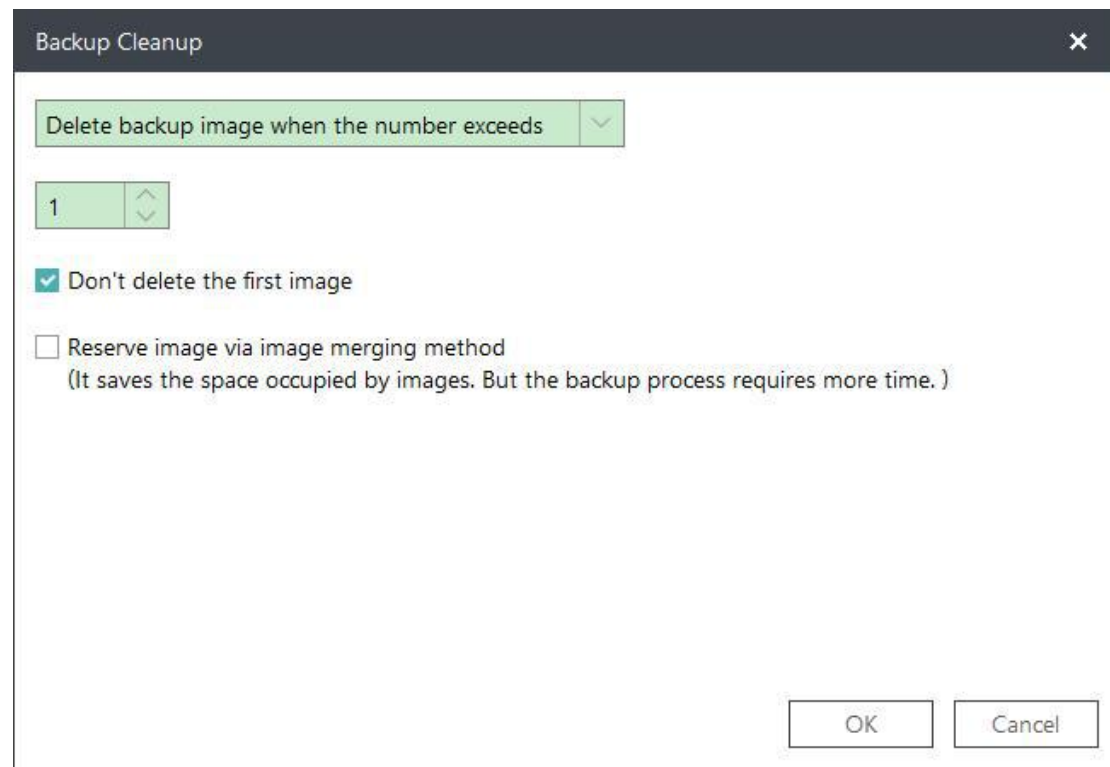
There are three backup methods, **Full**, **Incremental** and **Differential**.



You may get a knowledge of [differences among Full, Differential and Incremental](#) here.

Backup Cleanup

Destination storage is to be out of space soon or later without **Backup Cleanup**. Here is how it works in image retention rule to save storage space.



Images can be deleted on the basis of period, numbers, week, month and year. For more details, please click [here](#).

Don't delete the first image

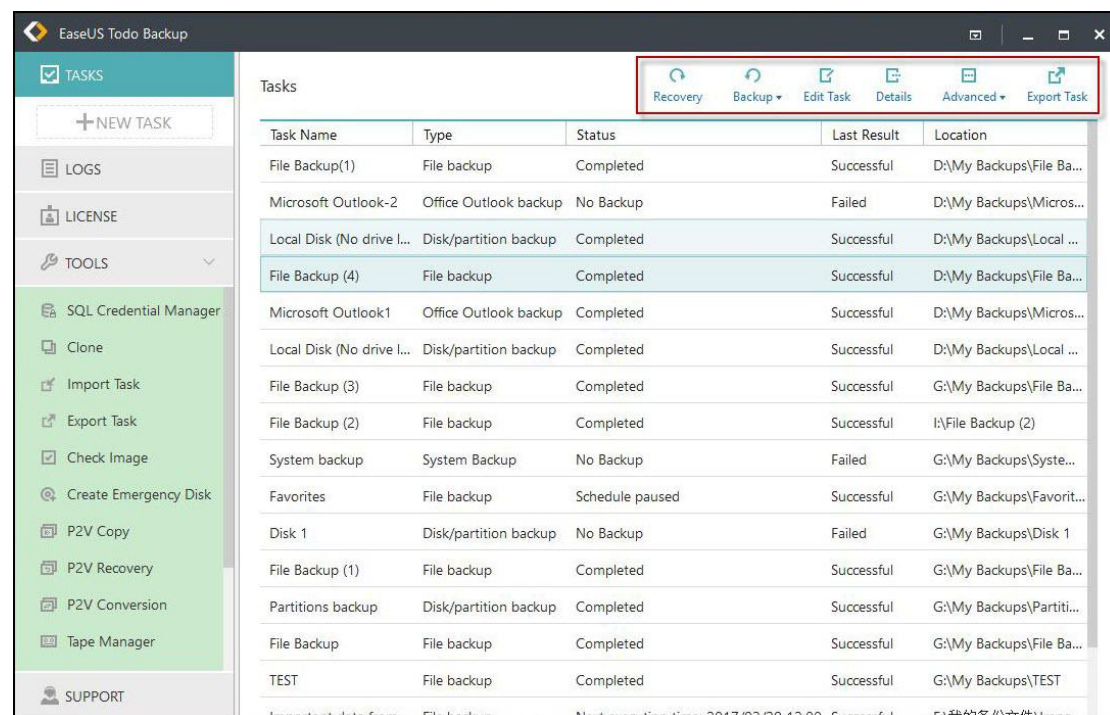
First full image will neither be deleted nor be counted into preserved images as per image retention rule with **Don't delete the first image** checked.

Reserve image via image merging method

Images are to be intelligently merged with **Reserve image via image merging method** checked. For more details, please click [here](#).

Created Backup Edit

All the options stated below are editable for any created backups, including Recovery, Backup, Edit plan, Task Details and Advanced.



Recovery

To click Recovery is to restore the backup. For more details, please click [Recovery](#).

Backup

To click Backup is to manually run a **Full**, **Incremental** or **Differential** backup, which will not affect the subsequent scheduled backups.

Edit plan

To click Edit plan is to update the created backup.

Task Details

Task Details includes Basic Information, Backup Images and Backup Details. To manually delete the images, please click Backup Images.

Advanced

Check Image - For more information, please refer to [Check image](#).

P2V Conversion - To convert data to a virtual disk file in order to be available for VMware Workstation or MS Virtual PC. For more information, please refer to [here](#).

P2V Recovery - To convert system to a virtual disk file in order to be available for VMware Workstation or MS Virtual PC. For more information, please refer to [here](#).

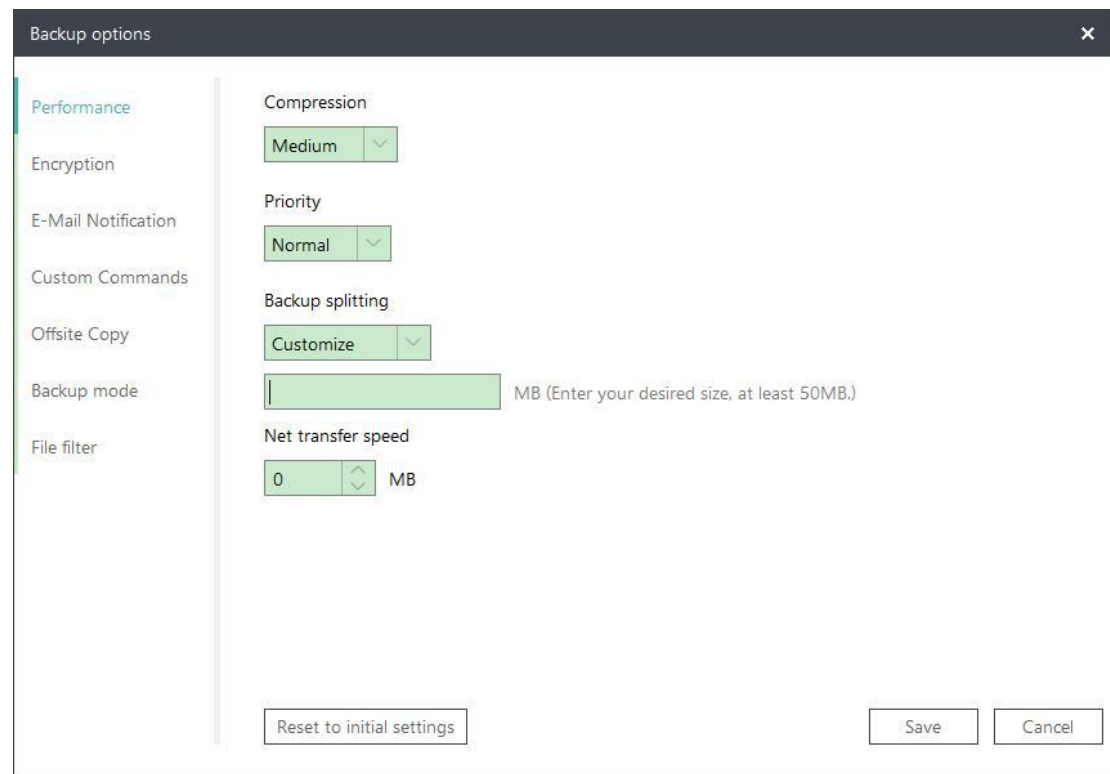
Delete Backup - To delete backup task only with **Delete related images** unchecked.

Backup Options

Backup Options is available for both created backups and newly created ones.

Performance

Performance includes Compression, Priority, Backup splitting and Net transfer speed.



Compression

A backup file can be compressed. Unfold the option to determine the compression level. In most cases, images with **High** compression is in a smaller size than the ones with **None** or **Normal** compression.

Priority

Windows is a multitasking operating system that supports simultaneous running of multiple applications. Backup runs faster with **Priority** checked.

Backup Splitting

To accommodate different storage medium, images require to be split into small pieces with Backup Splitting.

Automatic - Image size is automatically split by file system type of destination storage device with Automatic checked.

Manual - Image size is manually split with Manual checked, which requires a minimum size of 50MB.

Network transfer speed

It is 0 Mbps by default. In this case, EaseUS Todo Backup is unlimited to utilize the network and disk I/O resource.

Tips:

*Backup with **High** compression level is not supposed to generate a small image. The reason is some files that have been compressed won't be repeatedly compressed any*

more, such as .jpg, .pdf and .mp3, etc.

Encryption

To protect images with password, please check **Enable Backup Encryption**. The password adopts AES256 algorithm, which should be less than 64 characters.

Make sure the password is properly saved. EaseUS is unable to get encrypted images decrypted.

E-mail Notification

You may monitor backup status with Logs and E-mail notification. Here is how to set an email notification. For more details, please click [here](#).

Custom Commands

You may set any commands to be executed before or after a backup plan. For more details, please click [here](#).

Offsite Copy

To better protect images, you may set offsite copy. Images will be automatically duplicated to FTP with the completion of backup.

Backup options

Performance

Encryption

E-Mail Notification

Custom Commands

Offsite Copy

Backup mode

File filter

☒ Enable FTP copy

FTP address: 21

Username: Password:

☐ Anonymity ☐ Passive mode

Retry: 0

Test connection

Reset to initial settings

Save Cancel

Basic settings:

FTP address - Specify the FTP address with subdirectory included .

Port - Specify a port number for the FTP connection.

Username and **Password**- Input the username and password to log in the FTP.

Note:

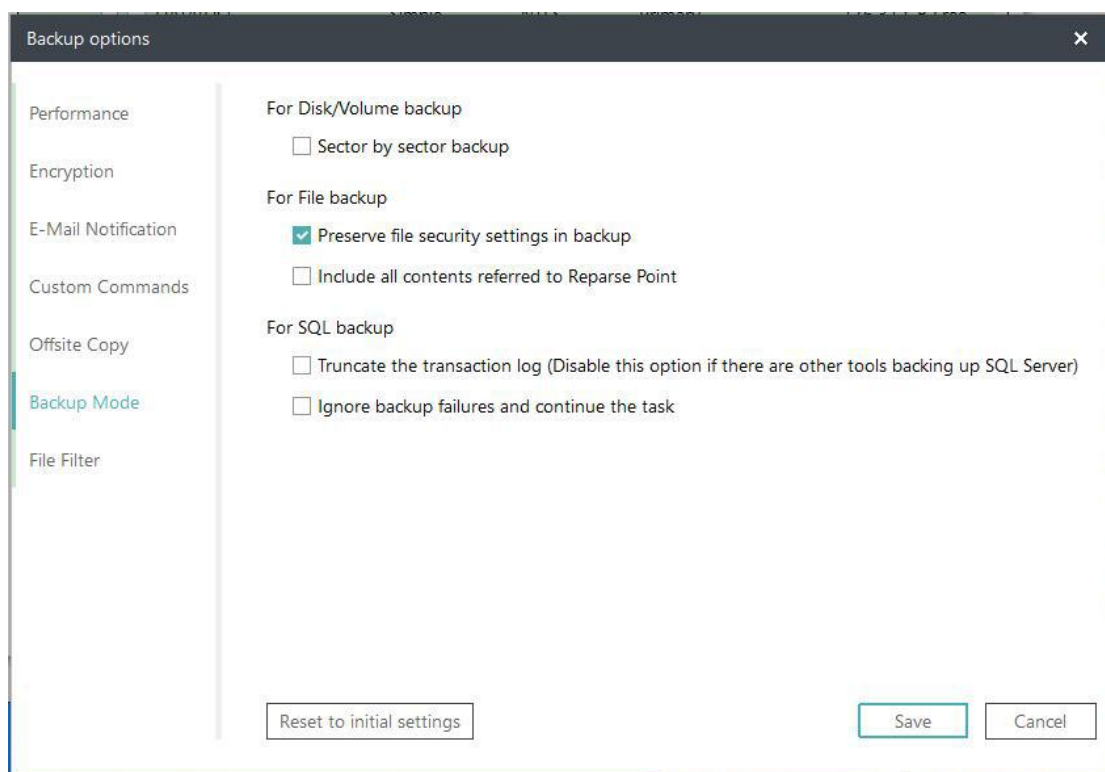
Check **Anonymity** when there is no FTP password or user name or FTP is accessible to everyone.

Additional settings:

Retry- Set the retry times. EaseUS Todo Backup automatically retries to connect to the server as many times as it is specified in case of FTP connection failure.

Passive mode - FTP has two working modes, **PORT** and **PASV**. The default mode is PORT.

Test connection- Test parameters for FTP to make sure FTP is accessible before backup.

Backup Mode

Sector by sector backup - All the data sectors and blank ones are to be backed up with **Sector by sector backup** checked. It is useful when file system error occurs. It slows down backup speed with a relatively larger image compared with normal backup.

Preserve file security settings in backup - The security attributes of NTFS encrypted files are reserved with **Preserve file security settings in backup** checked.

Include all contents referred to Reparse Point - All the Windows **Reparse Point** or link are included with **Include all contents referred to Reparse Point** checked. It may result in a huge image, so you not encouraged to check it.

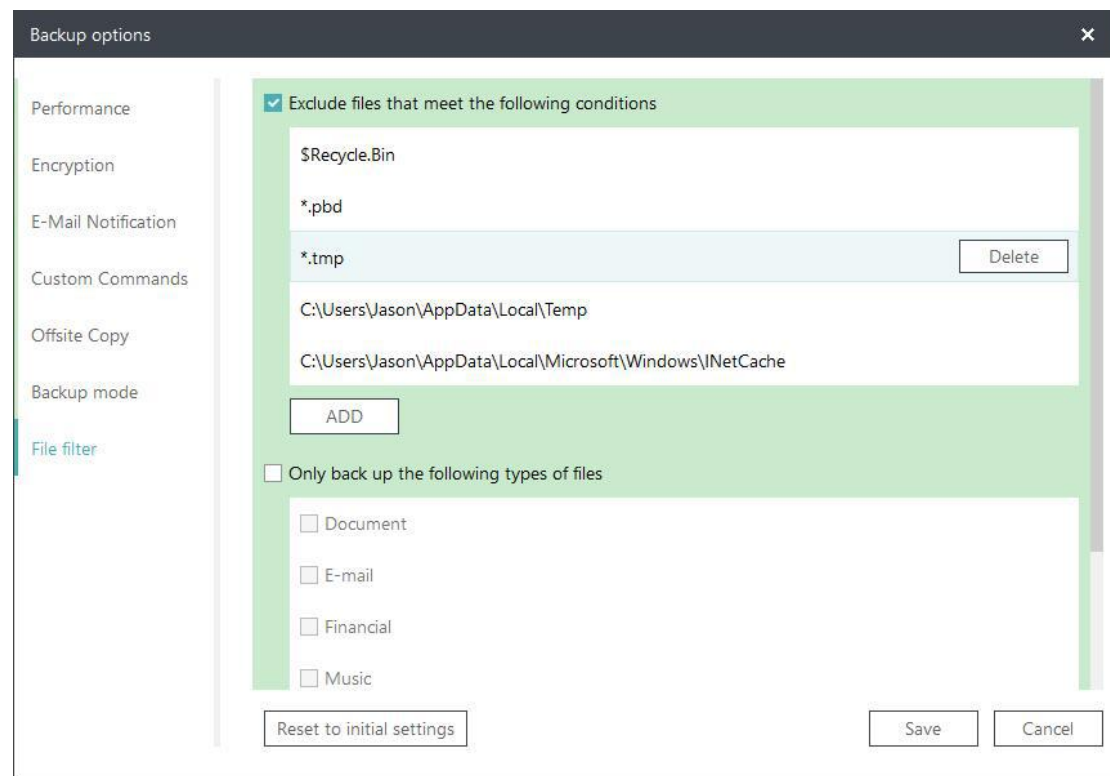
Truncate the transaction log - Log truncation frees the space preserves the log files so that these space can be reused by the transaction log. The main usage for this function is to prevent the log padding. Log truncation removes inactive virtual log files from the logical transaction log of the SQL Server database and frees the space in the logical log so that the physical transaction logs reuse those spaces. The transaction log will eventually

occupy all the disk space allocated to the physical log file if we never truncate it.

Ignore backup failures and continue the backup - The backup operation is to continue even after encountering one or more errors.

File Filter

File Filter is to exclude unnecessary files/folders or just back up added file types.



Exclude files that meet the following conditions

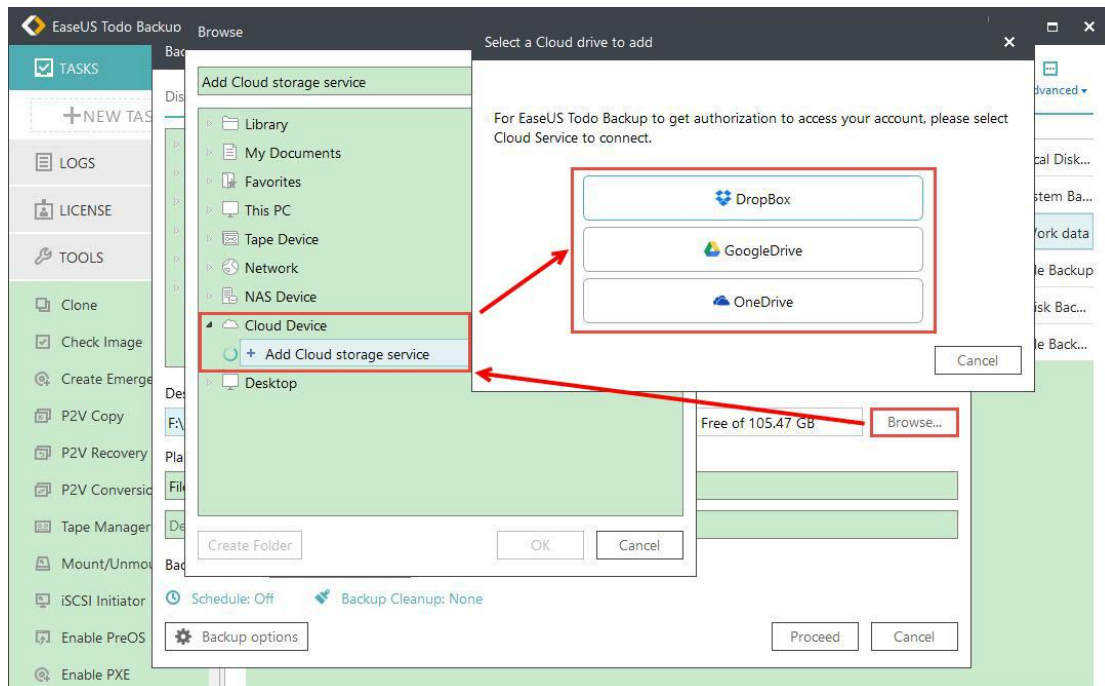
To add new files/folders to be excluded, please click **ADD**. To delete added files/folders to be excluded, please select the files/folder and click **Delete**.

Only backup the following types of files

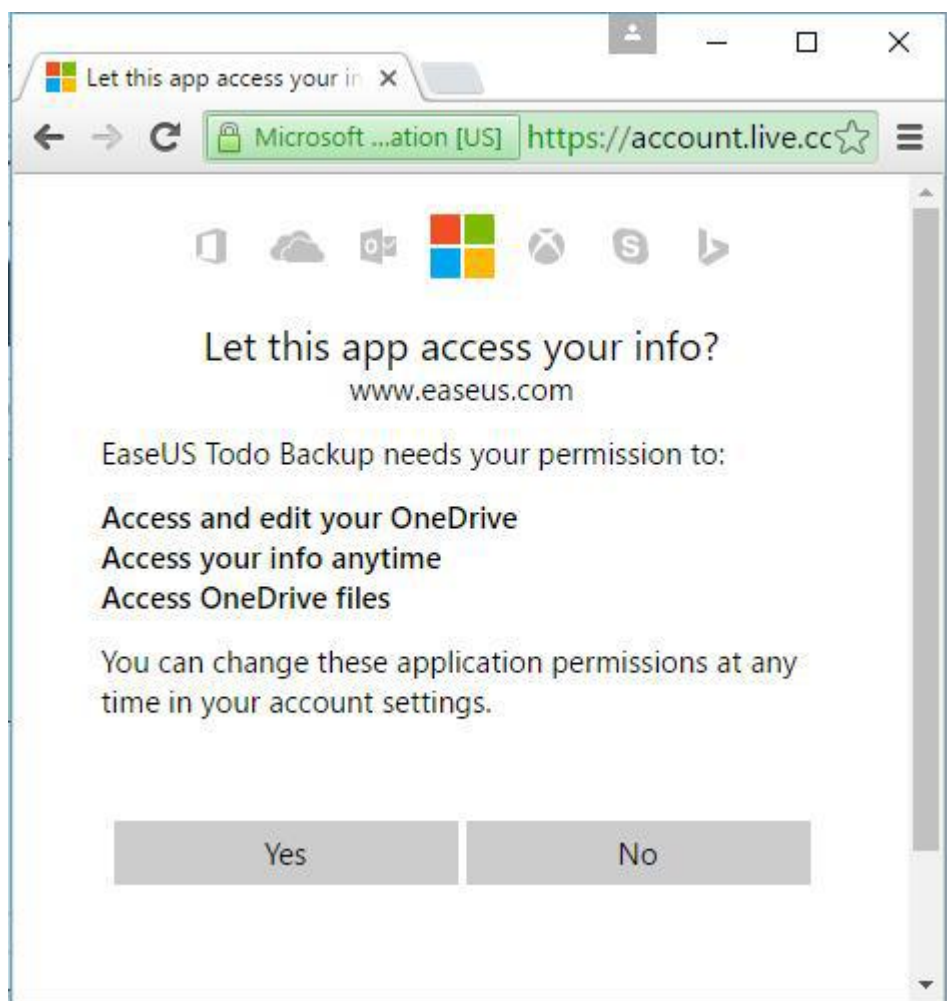
It supports File backup only. To add new file types to be just backed up, please click **ADD**.

Cloud backup

Cloud backup supports **File backup**, **Smart backup**, **Mail backup** and **Exchange backup** only. Supported Cloud Storage includes **OneDrive**, **DropBox** and **GoogleDrive**.



Cloud storage requires to be authorized via web page. Here it is illustrated with OneDrive:

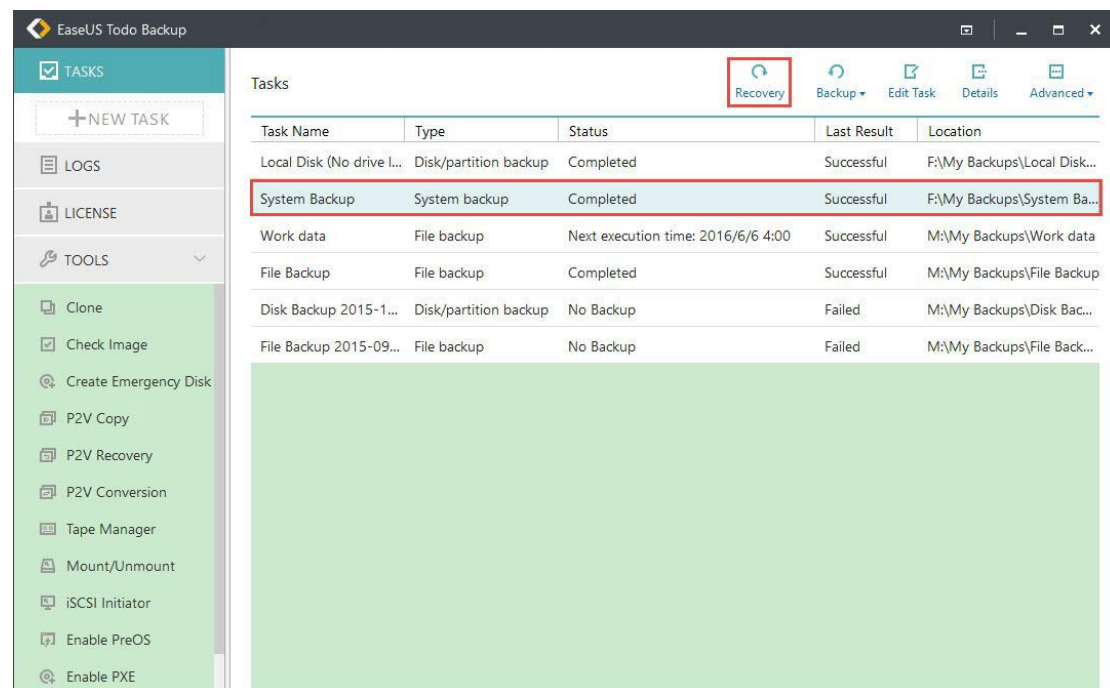


Recovery

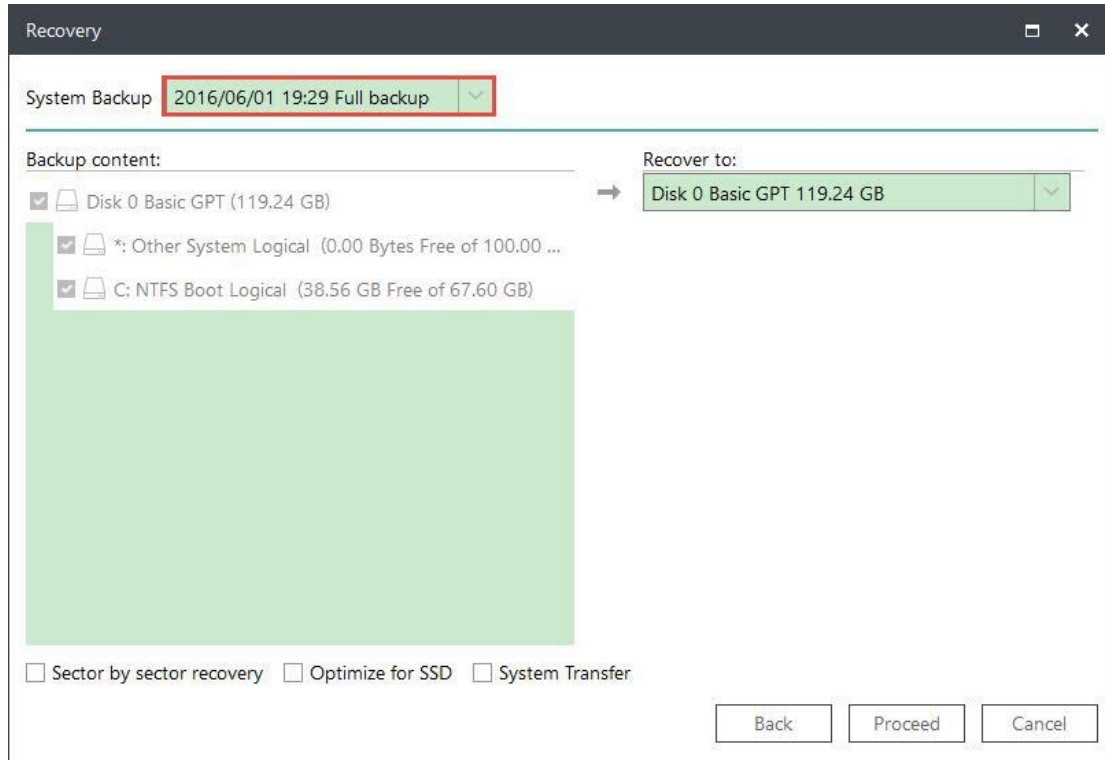
This feature is the reverse process of a backup. It will expand the files compressed in the backup image and restore files to the time point when the image file was created. With a simple recovery process, you can rescue the computer from a variety of disasters, such as virus infection, system crashes, partition failure and data loss.

System Recovery

Select a System Backup task first. Then directly click the **Recovery** button to restore the backup you created before.



Select the backup image to check the contents. Proceed with the restore with target location to restore selected.

**Attention:**

The original system will be overwritten once the recovery starts.

A [WinPE bootable disk](#) or [Pre-OS](#) is required for recovery in the case of OS failure.

Advanced restoration settings

These advanced settings can help you restore the backups more stably and smoothly in some special case. However, without these advanced settings, EaseUS Todo backup can still give you a full restoration.

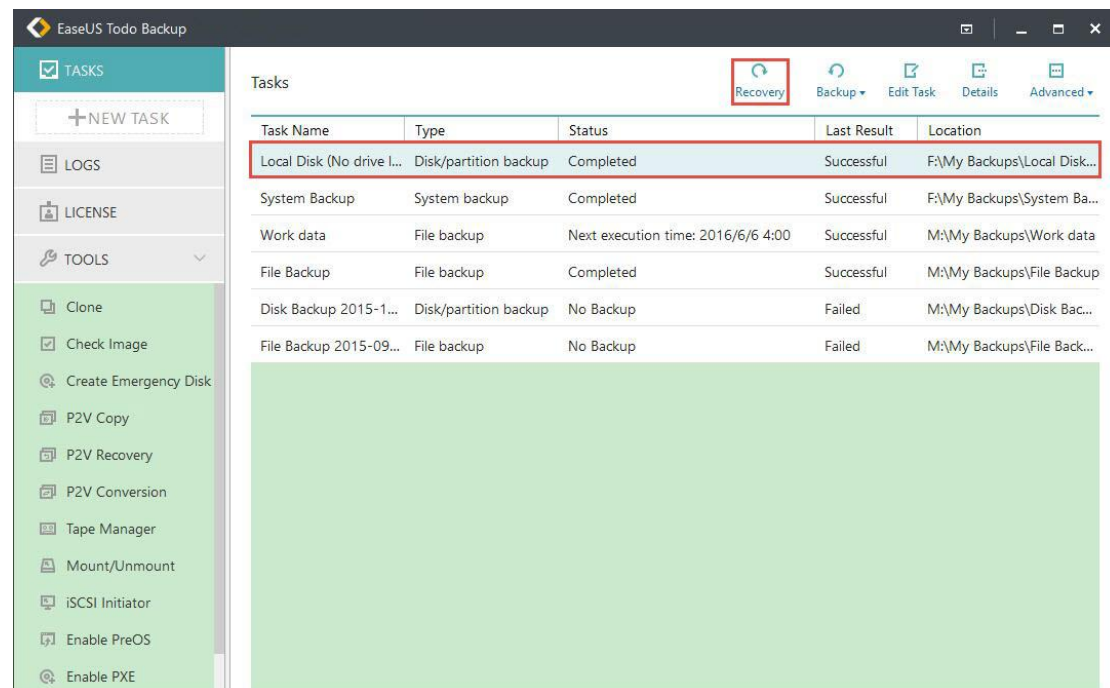
System Transfer - Restore the image which contains windows system to dissimilar computer, for details please click [here](#).

Optimize for SSD - If the destination disk is SSD, check this option will ensure sector alignment in the process.

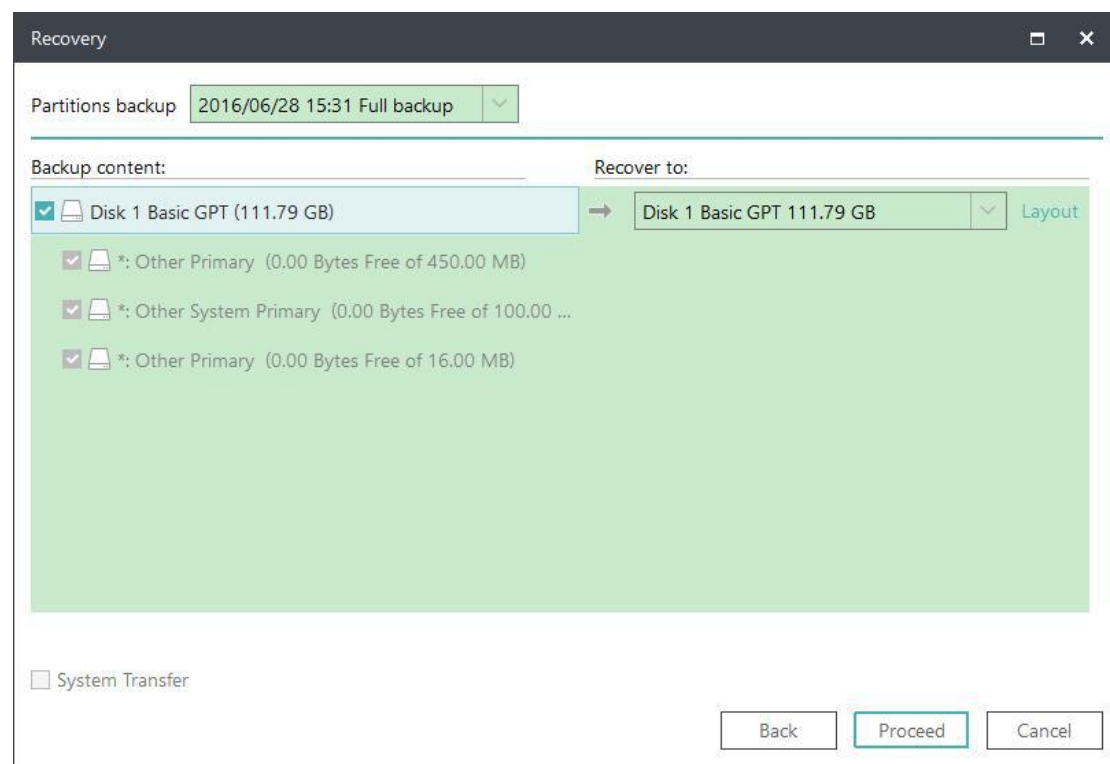
Sector by Sector recovery - Checking this option will recover the contents from an image file sector by sector. It ensures that the recovery process finishes successfully even if there are some logic errors on the original partition or hard disk. If you want every file distributed to its original sector after recovery, checking this option will meet that goal.

Disk/Volume Recovery

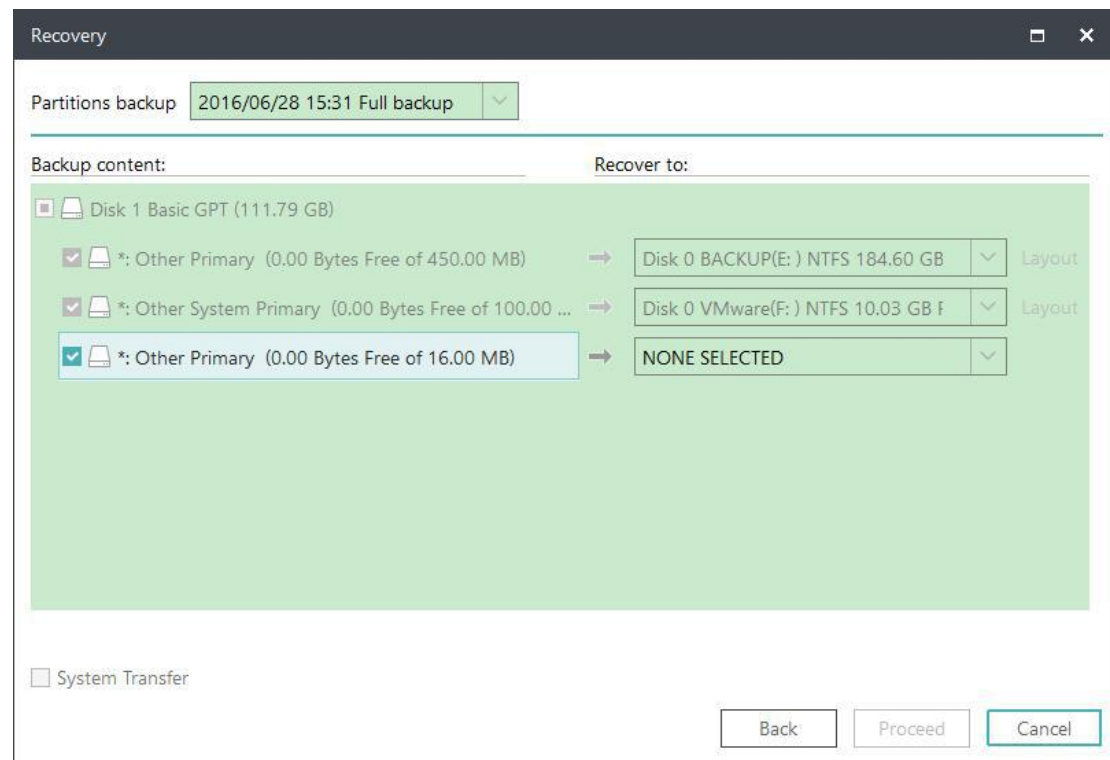
Select a Disk/Volume Backup task first., then directly click the **Recovery** button to restore the backup you created before.



Select the backup image to check the contents. Proceed with the restore with target location to restore selected.



When recovering a backup in v9.3 and later version, each target partition can be selected separately. This gives you the option to recover the partition you backed up to a specified partition.

**Note:**

when you proceed a Disk/Volume recovery, the data on destination drive will be overwritten, please be careful that selecting the correct drive to restore.

Advanced restoration settings

These advanced settings can help you restore the backups more stably and smoothly in some special case. However, without these advanced settings, EaseUS Todo backup can still give you a full restoration.

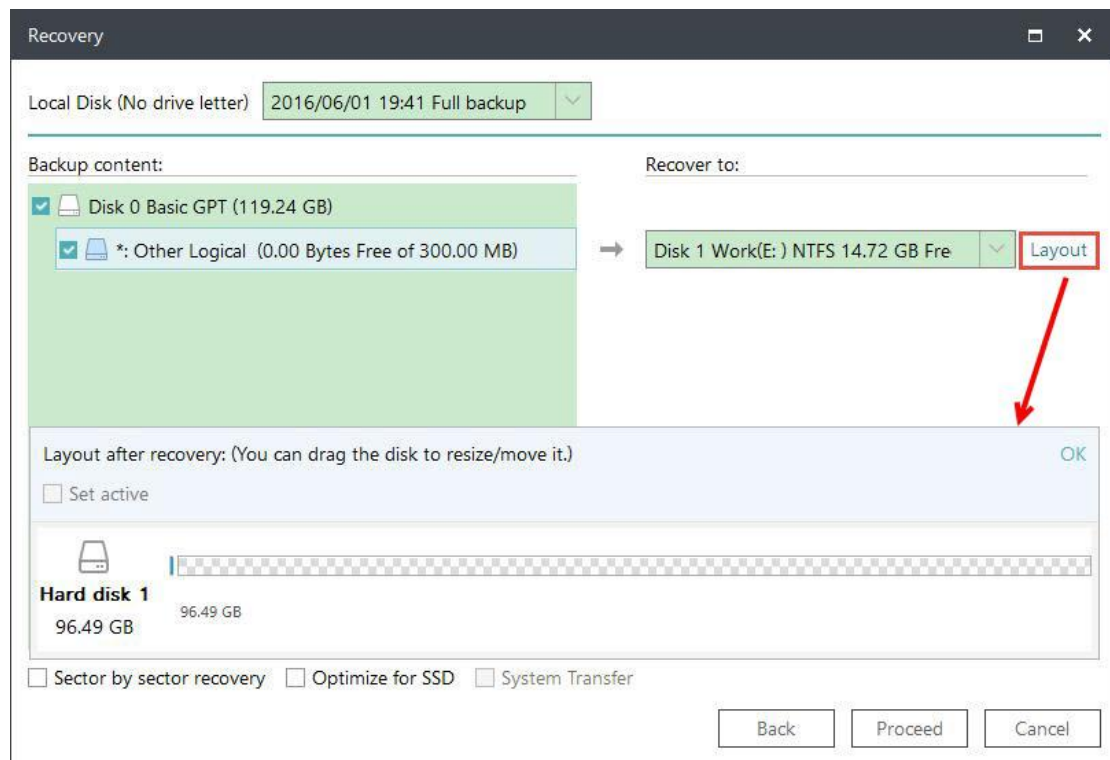
System Transfer - Restore the image which contains windows system to dissimilar computer, for details please click [here](#).

Optimize for SSD - If the destination disk is SSD, check this option will ensure sector alignment in the process.

Sector by Sector recovery - Checking this option will recover the contents from an image file sector by sector. It ensures that the recovery process finishes successfully even if there are some logic errors on the original partition or hard disk. If you want every file distributed to its original sector after recovery, checking this option will meet that goal.

Decide the partition size after recovery

When the size on target disk is changed, EaseUS Todo Backup will automatically accommodate the partitions or you may edit the size yourself before the recovery.



1. Select the destination disk and click **Layout** button.
2. Once the disk structure is displaying. Drag the partition to determine the size after restoration Then click **Proceed** to restore.

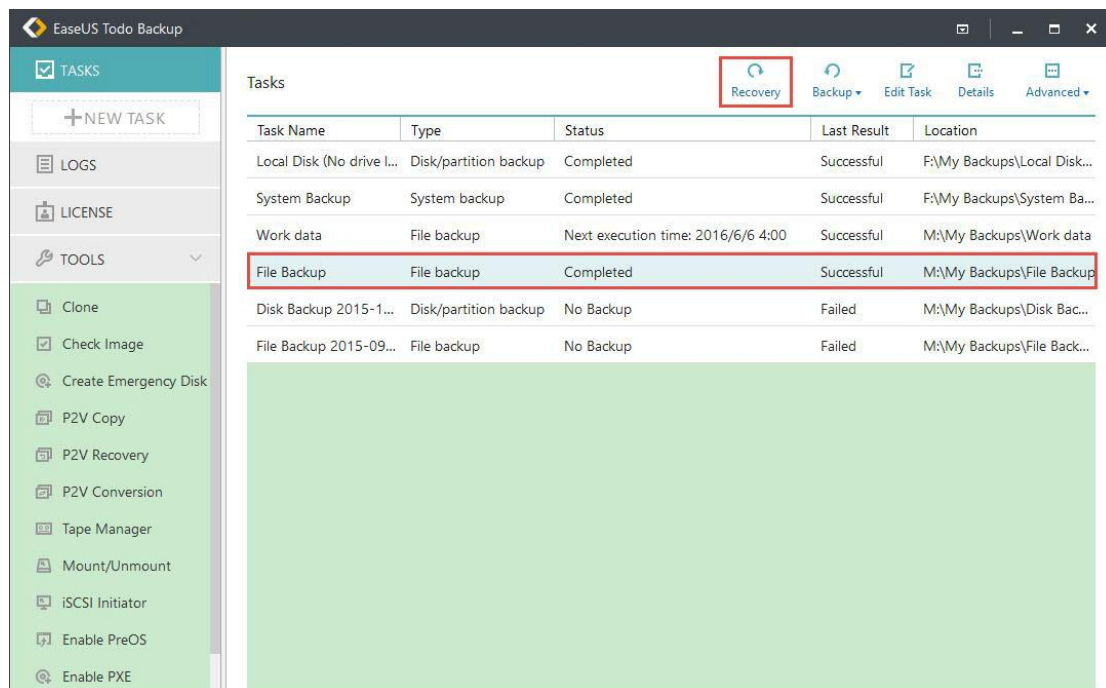
Dynamic volume recovery

Dynamic volume recovery is similar to partition recovery on basic disk.

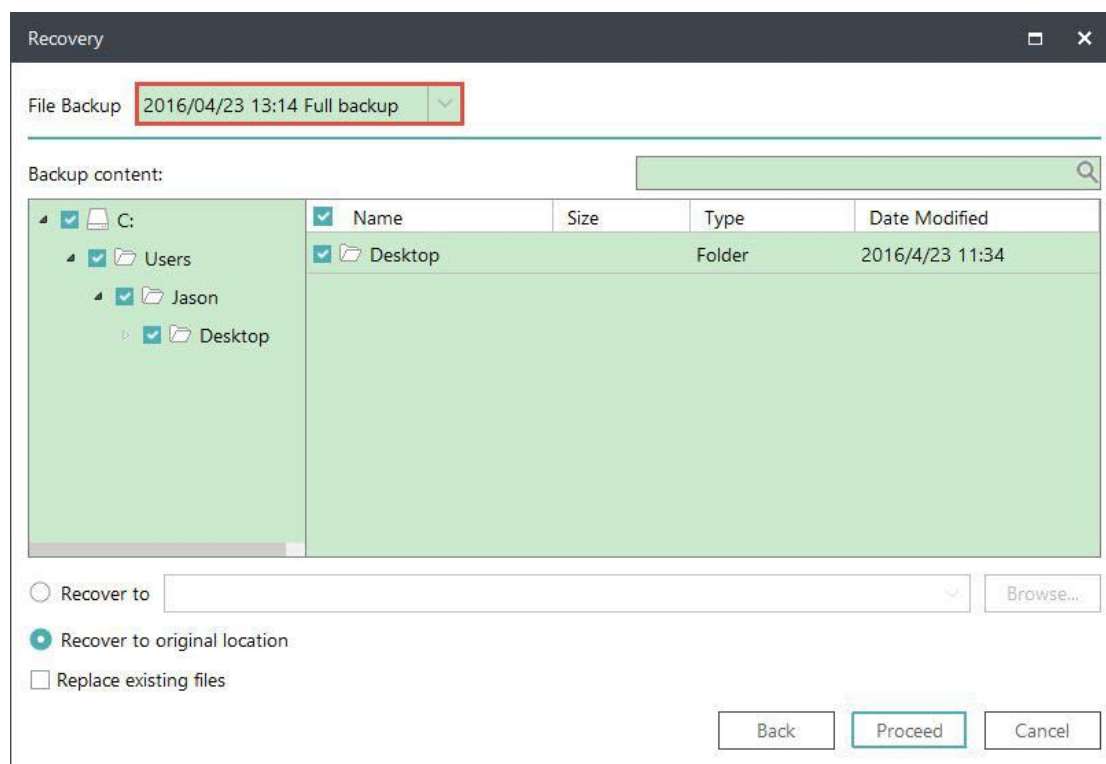
As a kindly reminder, dynamic volume with operating system will be a primary partition after being recovered to a basic disk.

File Recovery

Select a File Backup task first., then directly click the **Recovery** button to restore the backup you created before.



Select the backup image to check the contents. Proceed with the restore with target location to restore selected.



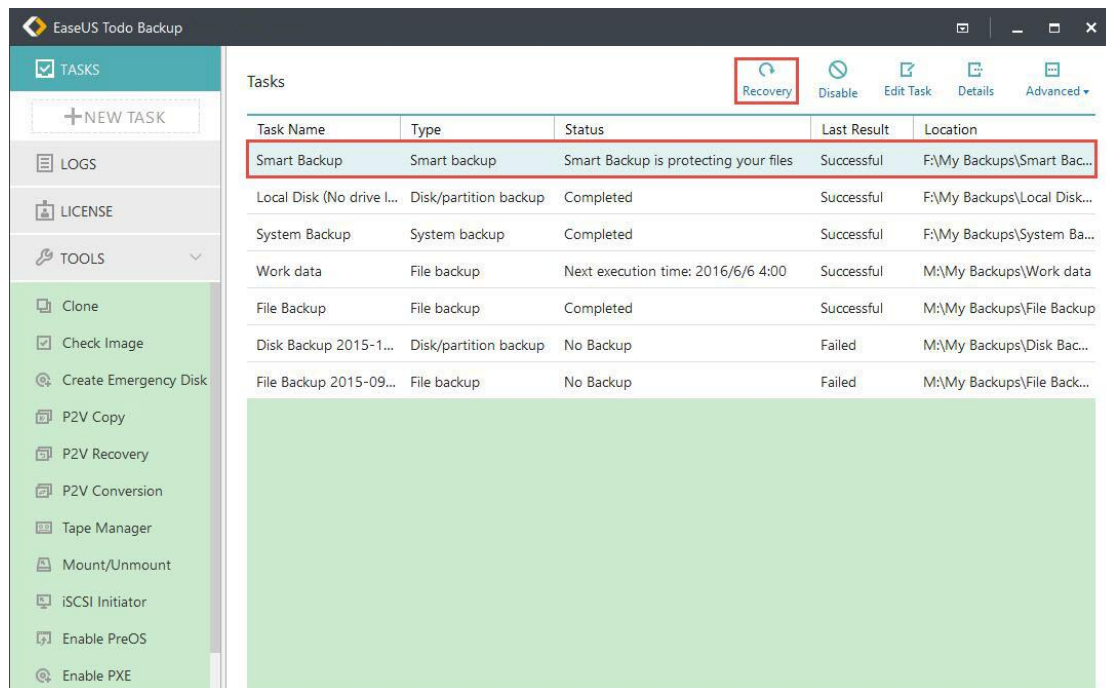
The Search box is able to search specify files from image to recover.

Recover to original location - Recover the files and folders to original or a different location.

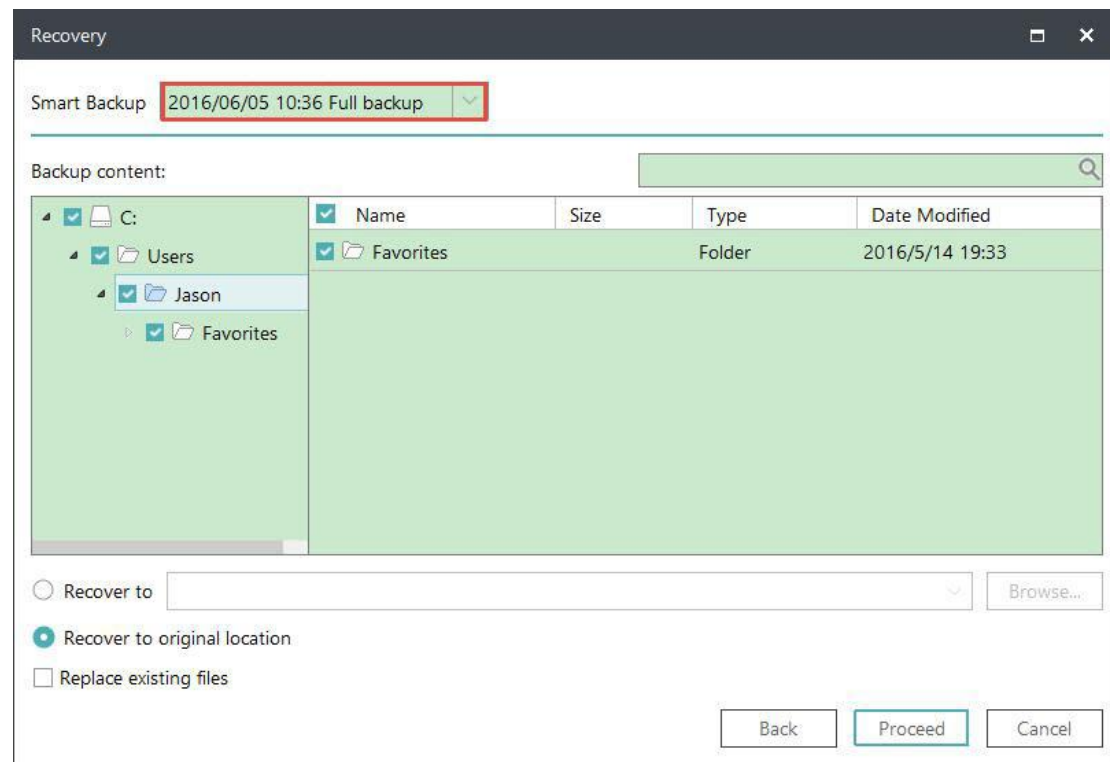
Replace existing files - After checking this option, the original files and folders will be overwritten after recovery.

Smart Recovery

Select a Smart Backup task first, then directly click the **Recovery** button to restore the backup you created before.



Select the backup image to check the contents. Proceed with the restore with target location to restore selected.

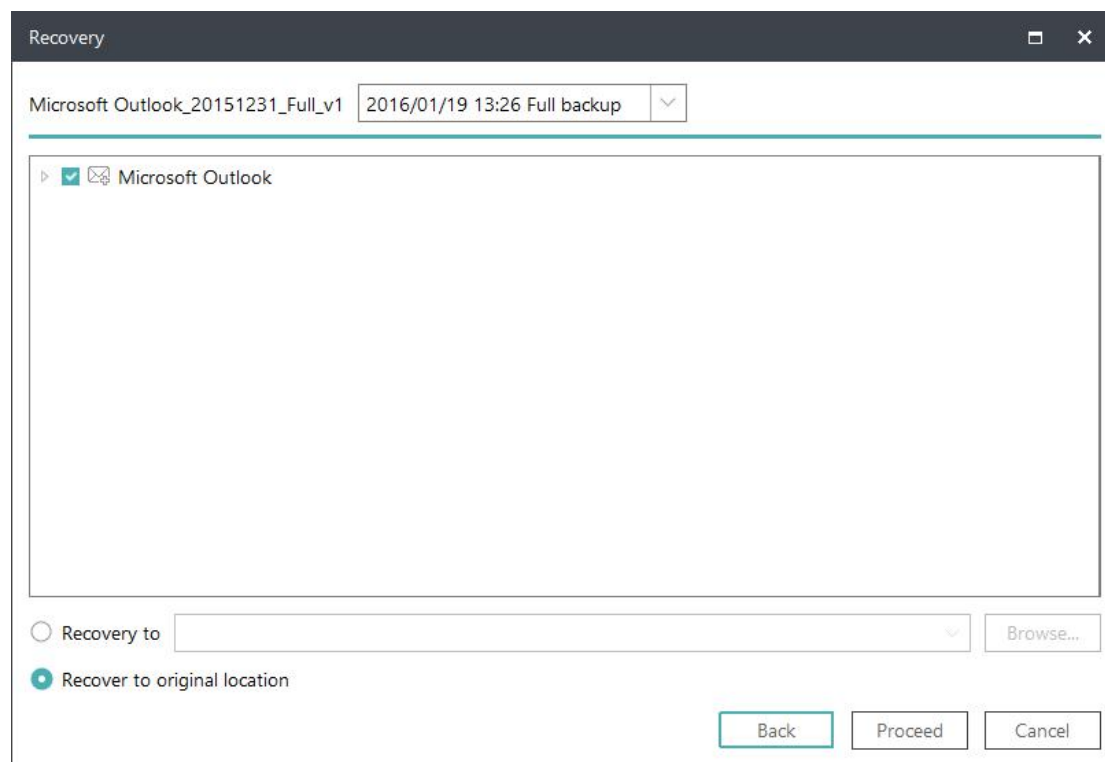


Recovery for Smart Backup is similar to [File recovery](#).

Mail Recovery

Select a Mail Backup task first, then directly click the **Recovery** button to restore the backup you created before.

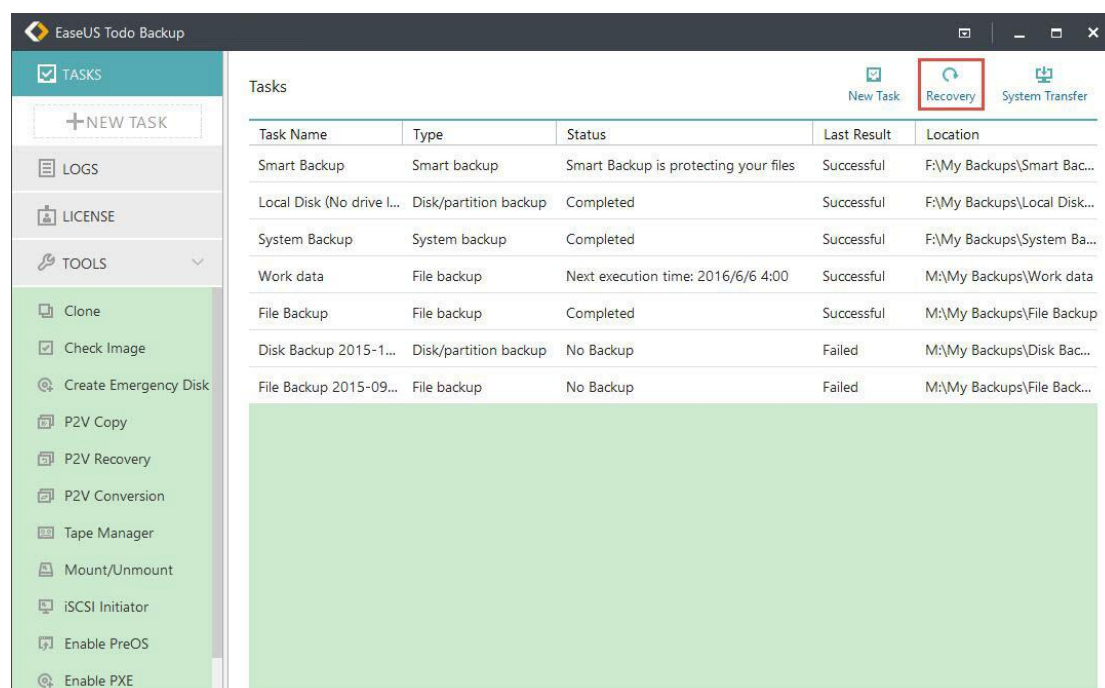
Select the backup image to check the contents. Proceed with the restore with target location to restore selected.

**Note:**

The existing emails/contacts will not be overwritten. In another word, it is a filling-up restore in the process of mail recovery.

Browse to Recover

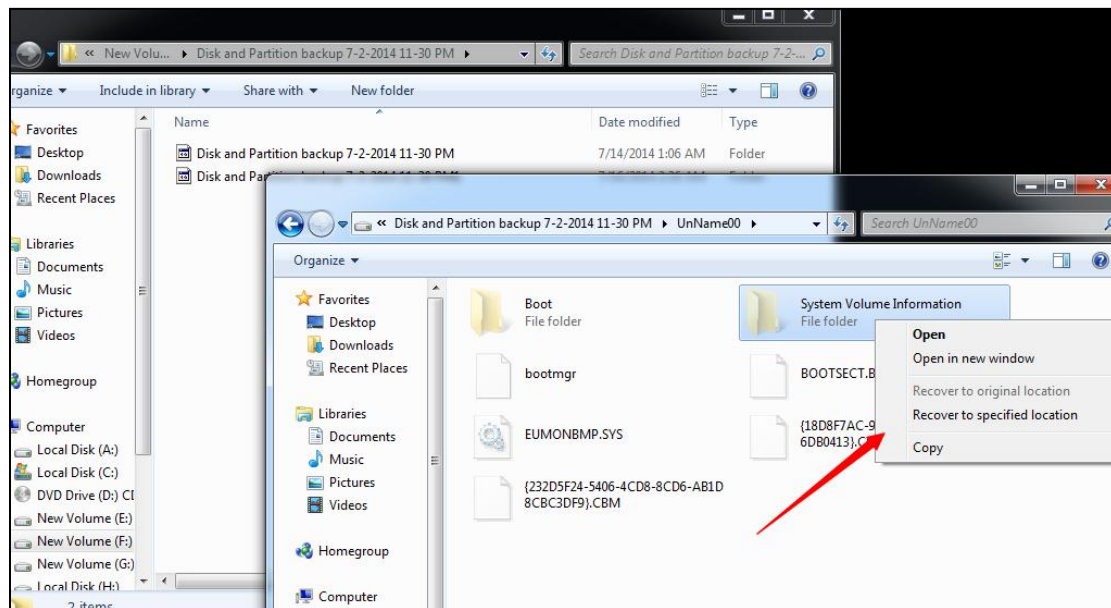
Sometimes, If the backup plans lost due to re-install EaseUS Todo Backup, and you cannot find the plan record in Home page. Or you try to restore under WinPE emergency disk. Then the **Recovery** option is necessary.



Click this button to locate your image file manually from Windows directory tree for restoration.

Individual File Recover

EaseUS image files can be directly accessed. You can double click on the .PBD image file or right click it and choose open to browse it. Find the target file, right click it to display the menu, and then **open**, **copy** and **recover** specified files in the image.

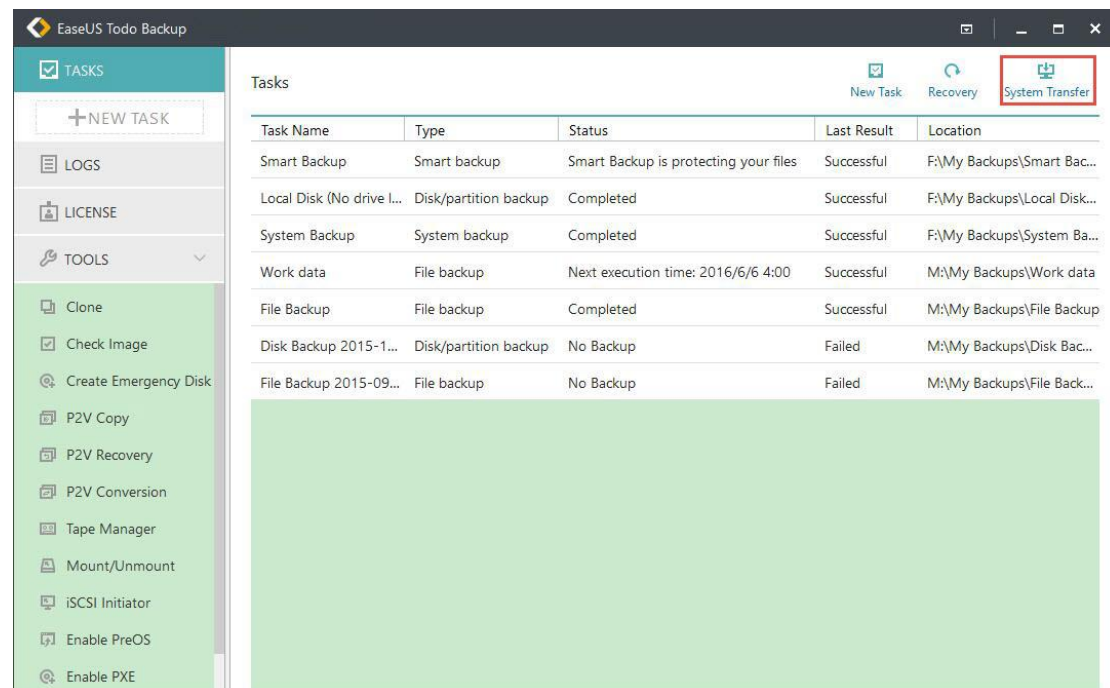


System Transfer

Since most hardware requires corresponding driver installed to be functional, users cannot simply move system to a new machine with different hardware configuration and expect the system to run as original due to lack of necessary hardware driver.

EaseUS Todo Backup provides **System Transfer** feature which can help users solve the trouble easily. The most common situations this option can handle are:

1. Migrate system to a new and more powerful PC.
2. Restore and keep old system available after some hardware upgraded.



Preliminary

Essential preparations before the recovery include:

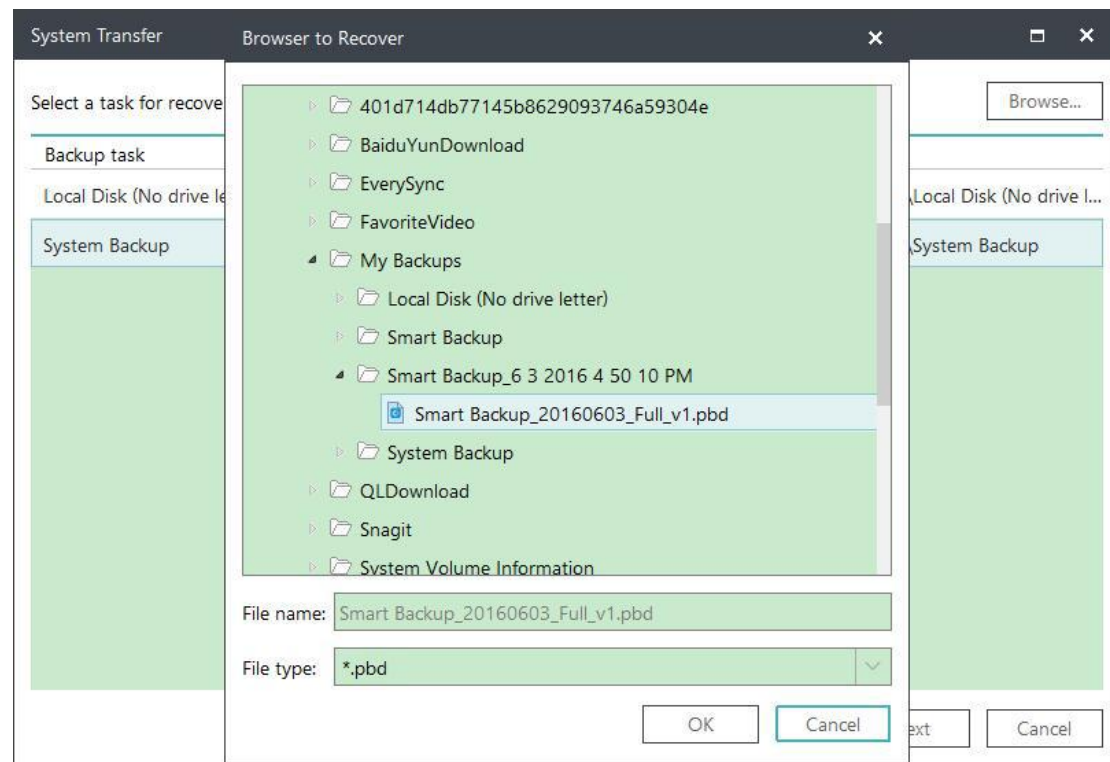
1. A valid system image file created with **System backup** or **Disk/partition backup** option.
2. A proper **WinPE emergency disk/USB** which can be loaded on target machine correctly.
3. The inf driver file of the new hardware on target machine.

Note:

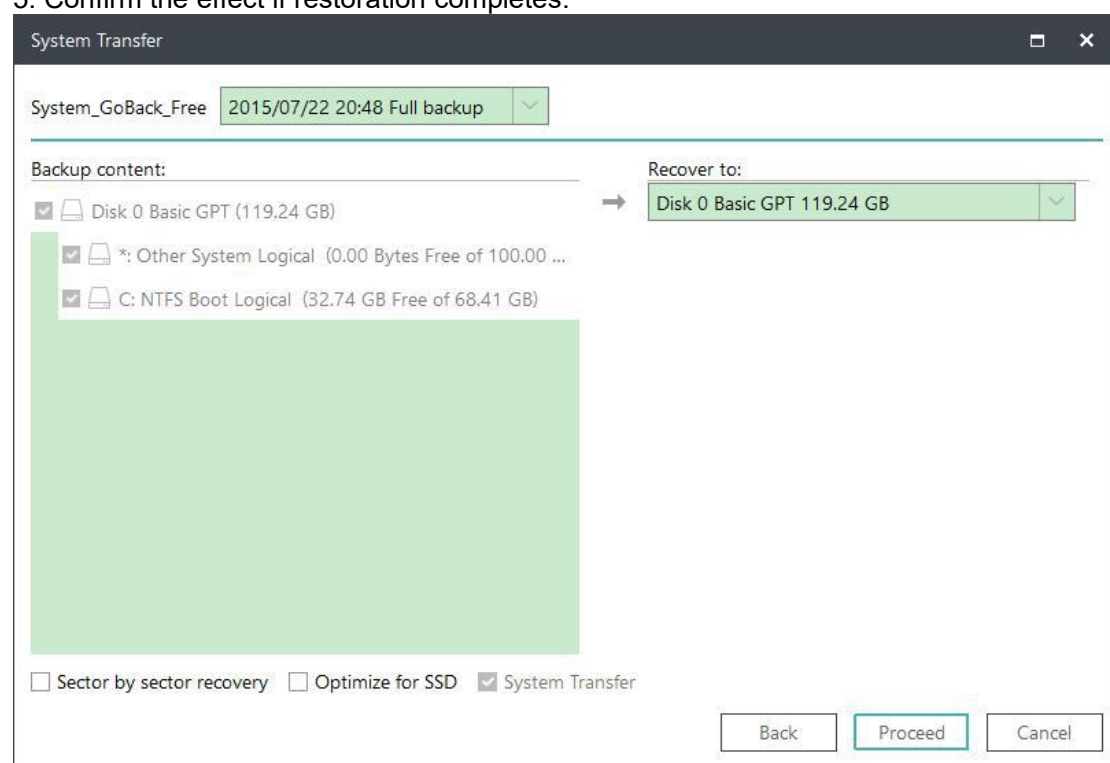
It is allowed to place the system image file and the inf driver file on the WinPE bootable drive if you have enough free space there.

Steps

1. Load target machine from the WinPE emergency disk and ensure the drive which contains system image files has connected to the machine already.
2. Find the option **System Transfer** in the main window.
3. Browse and load the system image file.



4. Select the target drive to restore.
5. Confirm the effect if restoration completes.



Note:

Sometimes, if you have some special hard drives, say, hardware RAID, SCSI drive, they may be not listed by default in WinPE environment. Then corresponding driver needs to be installed in order to make the drives available. For more info, you can read:

[What to do if the drive cannot be listed by default.](#)

6. After system recovery finishes, you may get some prompted windows asking for driver (.inf file) of a specific hardware. You can find the driver according to the listed hardware info, and add it to ensure you can load from the system normally after the entire system migration is done.

Clone

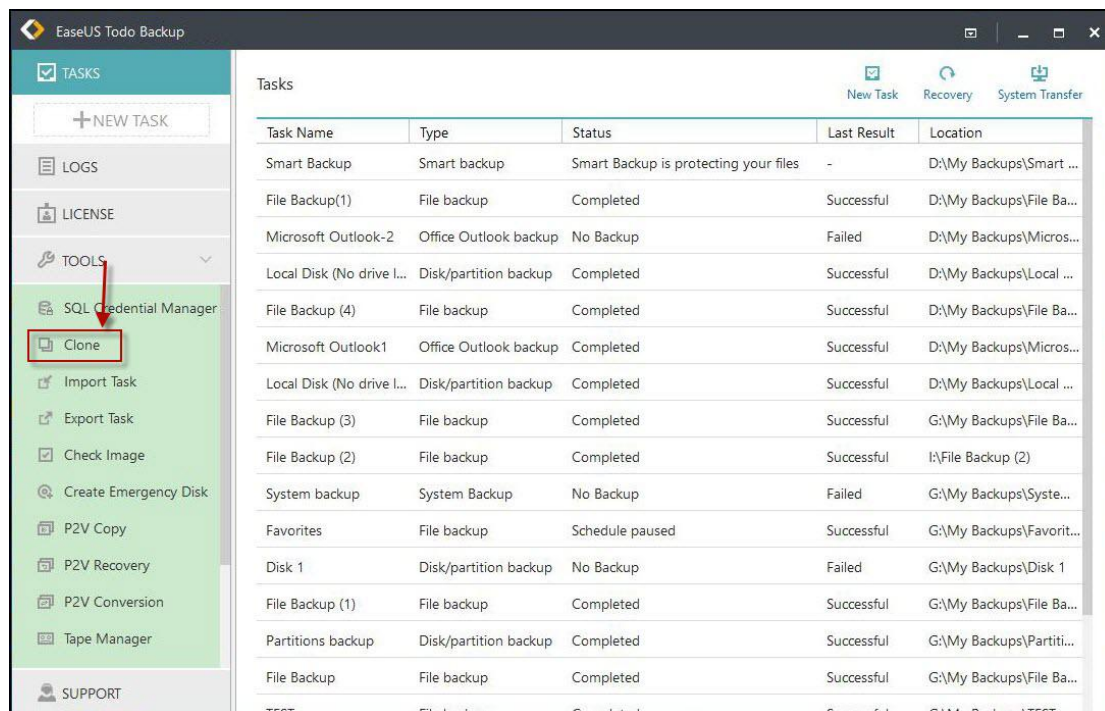
It's a common job to replace the hard drive where Windows exists. This may be resulted from a failing drive or requirement for larger disk capacity. **Disk Clone** option in EaseUS Todo Backup can deal with the job easily.

Disk Clone

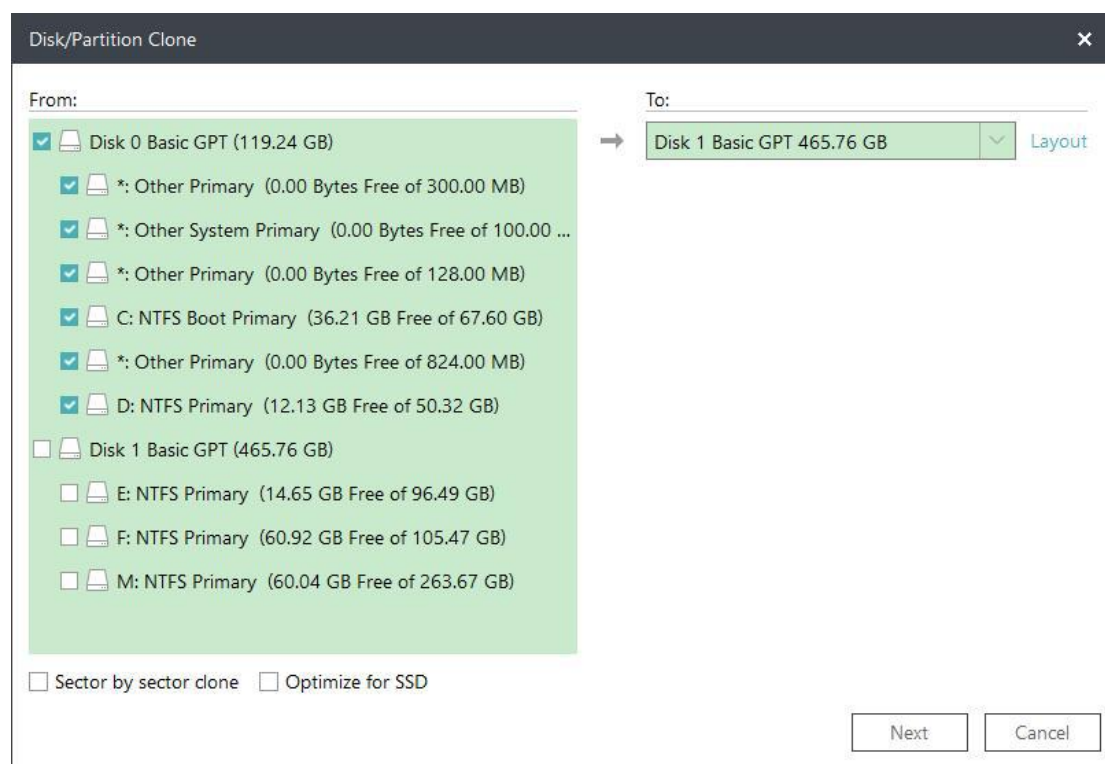
Disk clone will transfer all data (include operating system and program) on the selected hard disk to another. It is especially useful when you want to replace hard disk with a new one. For a successful disk clone, please ensure that the capacity of destination disk is larger than the used space of source disk.

Steps

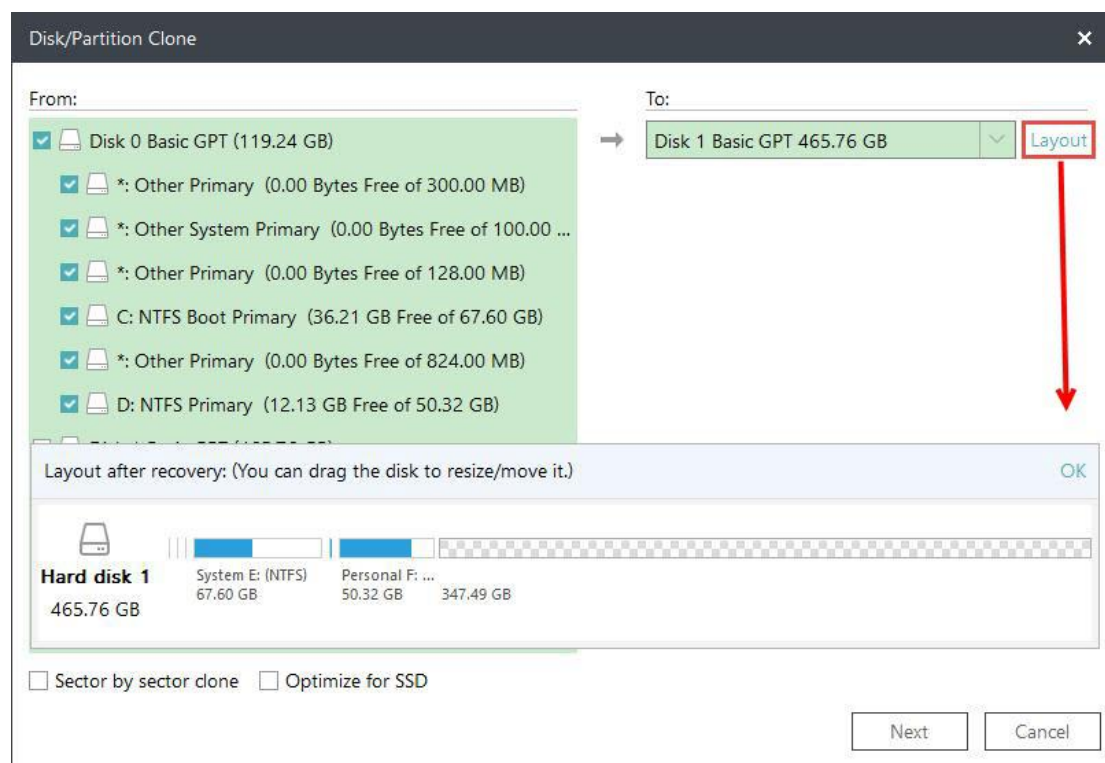
1. Click **Clone** option in **TOOLS**.



2. Select source disk first. Then proceed with the target disk checked.

**Tips:**

Click **Layout** to display the structure on target disk. Drag the partition to resize the partition on target disk after clone.



3. Click **Next** to start the disk clone.

Advanced clone settings

These advanced settings can help you clone a drive more stably and smoothly in some special case. However, without these advanced settings, EaseUS Todo backup can still give you an exact and intact clone.

Optimize for SSD - If the destination disk is an SSD, checking this option will ensure sector alignment in the process.

Sector by sector clone - A sector by sector clone ensures that the destination hard disk/partition is exactly the same as the source hard disk/partition. It will clone all the sectors if the option is checked, even if the sector is blank. As a result, the target will be equal in size to the disk being cloned after the process. This option is found in the same step where you choose the destination hard disk/partition both in the Disk clone and Partition clone wizard.

Note:

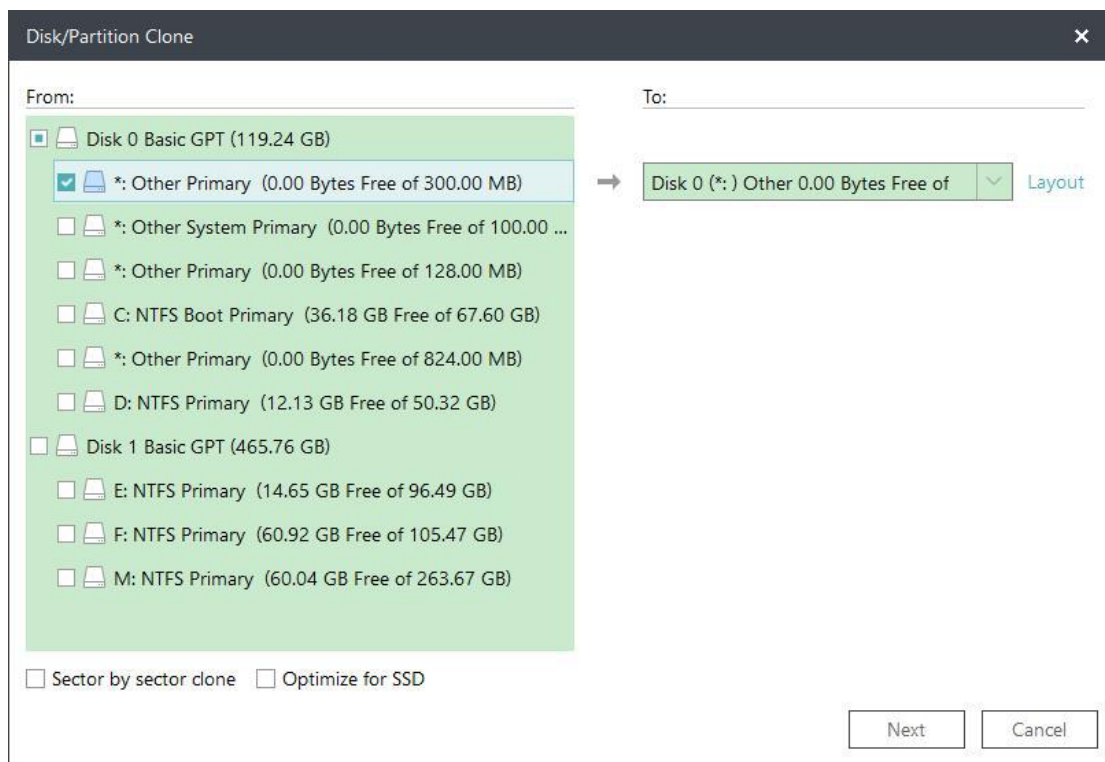
The disk/partition cannot be resized if you choose to clone your disk in the Sector by sector mode.

Partition Clone

Though backup is very convenient and systematic, yet partition clone is still a simple and intuitive way to create an exact same copy of partition.

Step

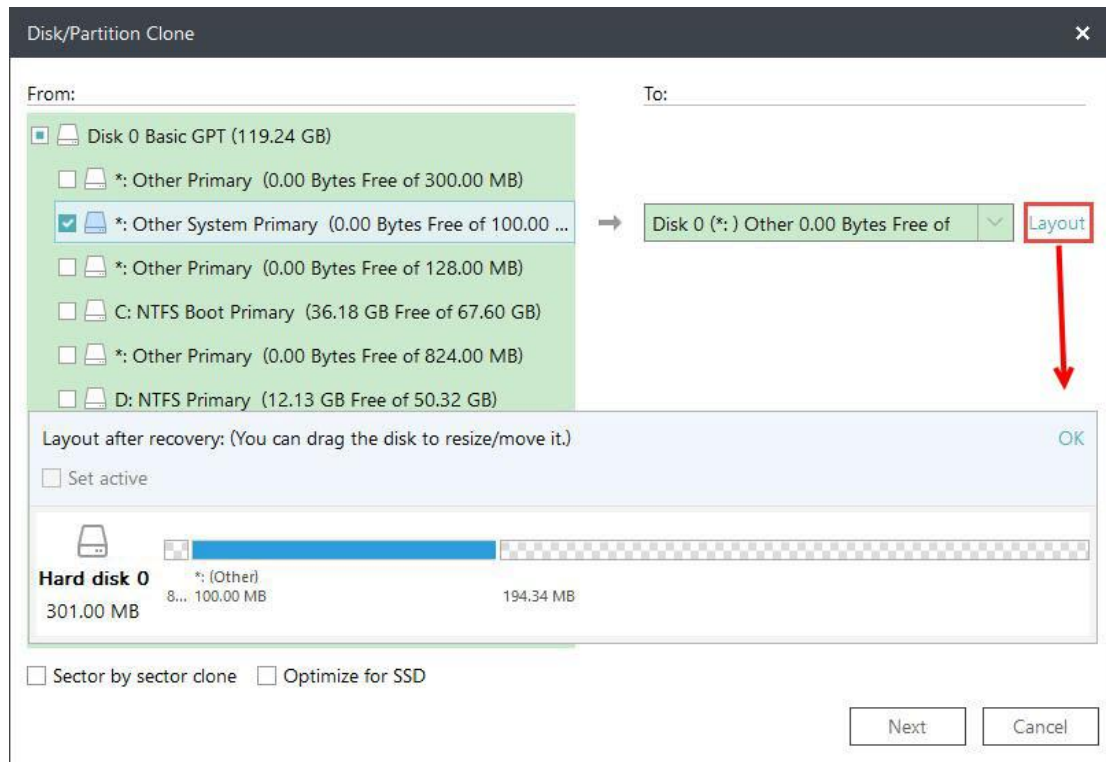
1. Select source partition(s) first. Then proceed with the target partition(s) checked.



Tips:

*Click **Layout** to display the structure on target disk. Drag the partition to resize the*

partition on target disk after clone.



3. Click **Next** to start the partition clone.

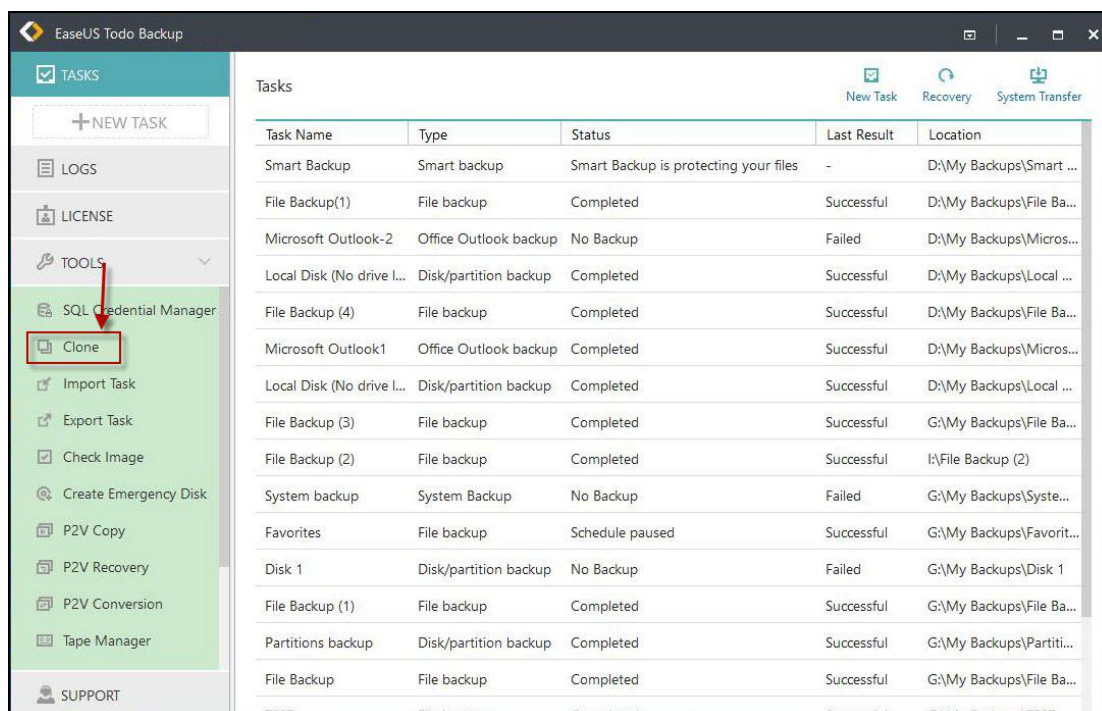
Dynamic Disk/volume clone

Dynamic disk/volume clone is supported. All the dynamic volumes on different disks are listed all together.

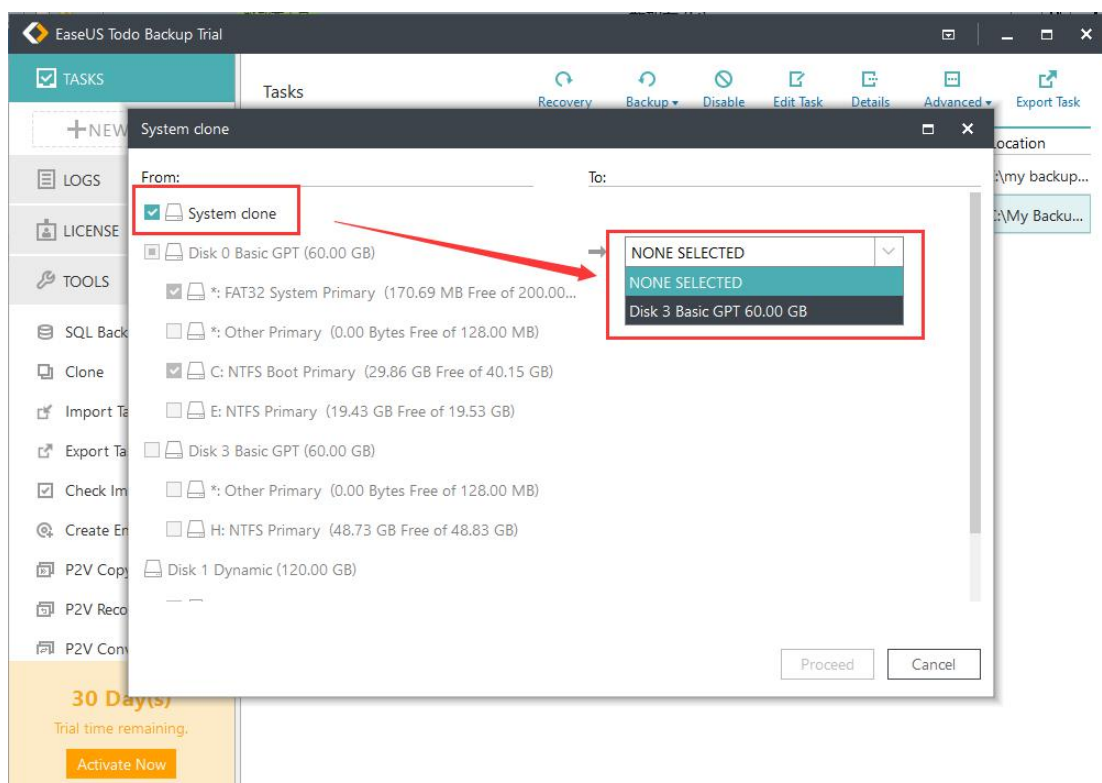
System Clone

This option enables you to migrate your system to a new hard drive only.

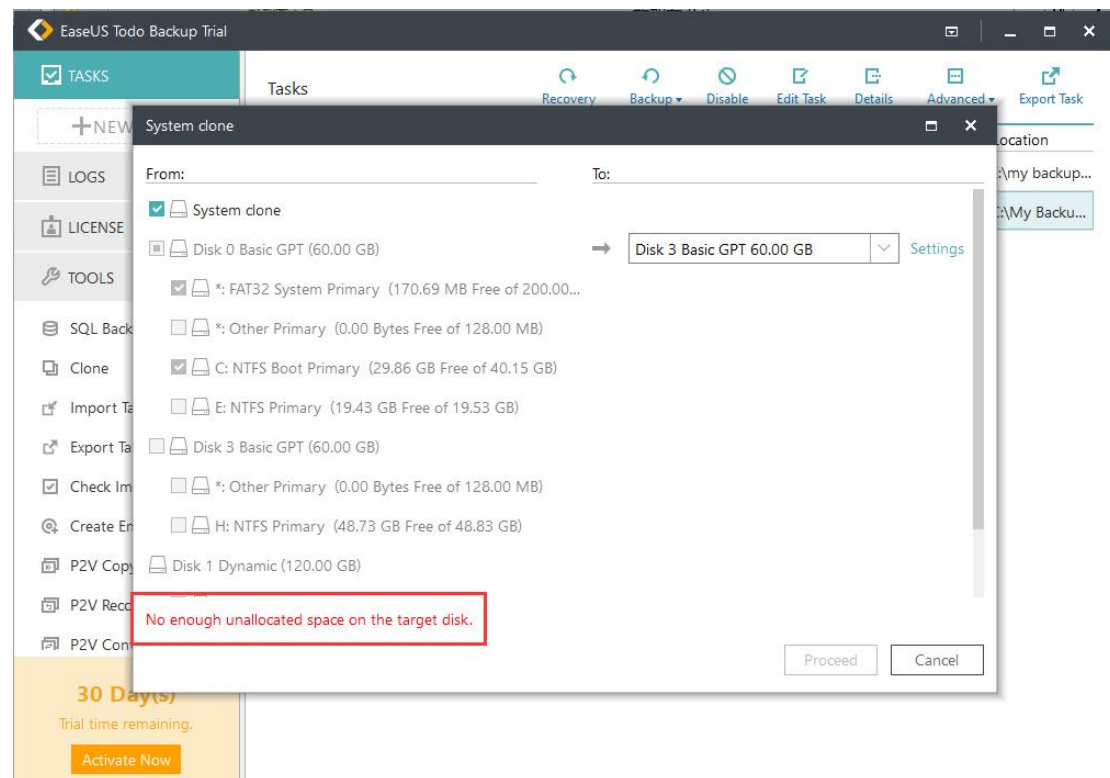
1. Click **“Clone”** under **“TOOLS”**



2. Select **"System Clone"**. The current system partition and boot partition will be automatically selected. Next select the drive you want to clone to in the drop-down box.

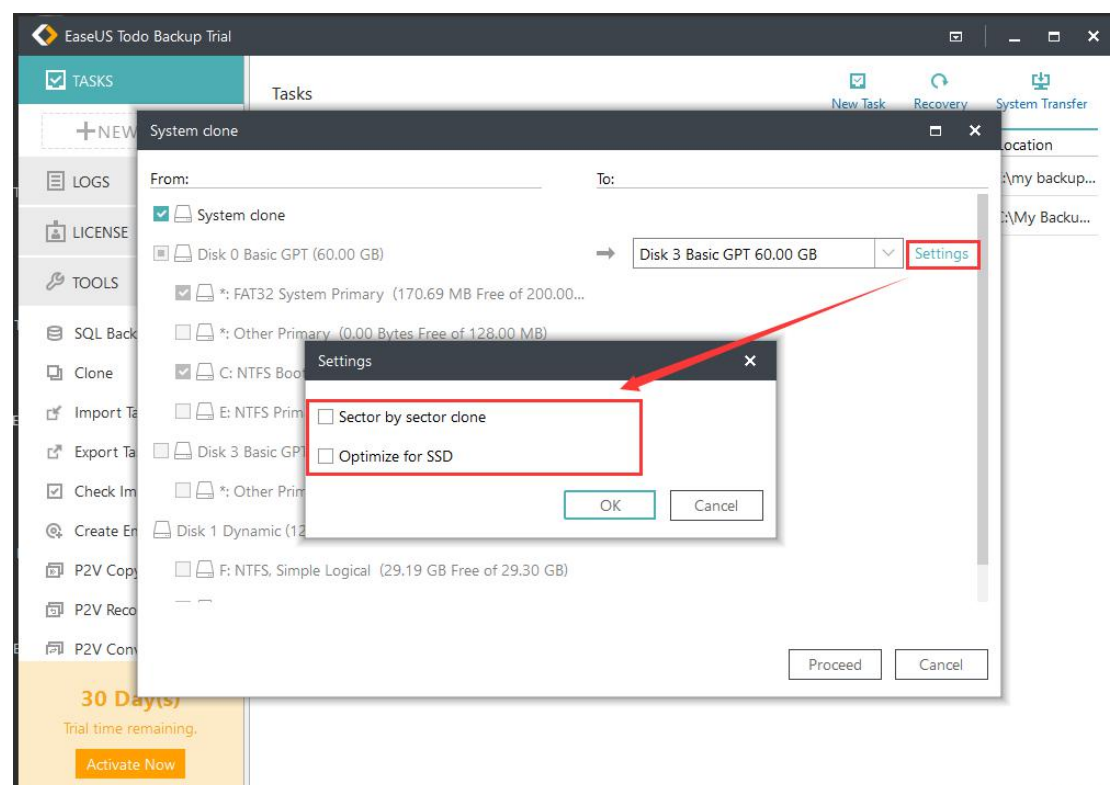


Please make sure the capacity of the unallocated space on your target drive is larger than the total size of your boot and system partition, or you will encounter the error below:



System clone will not delete or wipe the existing partitions on your target drive.

3. Click **“Settings”** to customize this clone task. **“Optimize for SSD”** is highly suggested if your target drive is an SSD.



4. Click **“Proceed”**.

5. After the process is completed, please reboot your computer to your target drive.

Tip: System Clone is not available for use under the condition that your system partition and boot partition are not on the same drive. Please follow the instruction in [here](#) to redirect your boot and system partitions into one drive if it is your situation.

Advanced Server

Nowadays, server administrators are supposed to utilize different tools to perform better business data management, such as MS Exchange for email management, MS SQL for relational data query and update. This data is very important for the daily work of a company. The server administrator has the responsibility of keeping the physical security, integrity, and safety of the data. A regular backup is really a good habit, which not only helps users face the unexpected server failure, but also saves the data in a specified status.

With EaseUS Todo Backup **Advanced Server Edition** and **Technician Edition**, you can quickly and easily backup Exchange server, MS SQL server and archive image file to Tape device for better management and storage.

Exchange Backup

Exchange Server is the physical/virtual server with Microsoft Exchange installed. It is a server product from Microsoft. Its main features include electronic mail, calendaring, contacts and tasks; supports for mobile and web-based access to information; and supports for data storage. With the current version of EaseUS Todo Backup, you may select the storage group and individual mail folder as the basic backup unit.

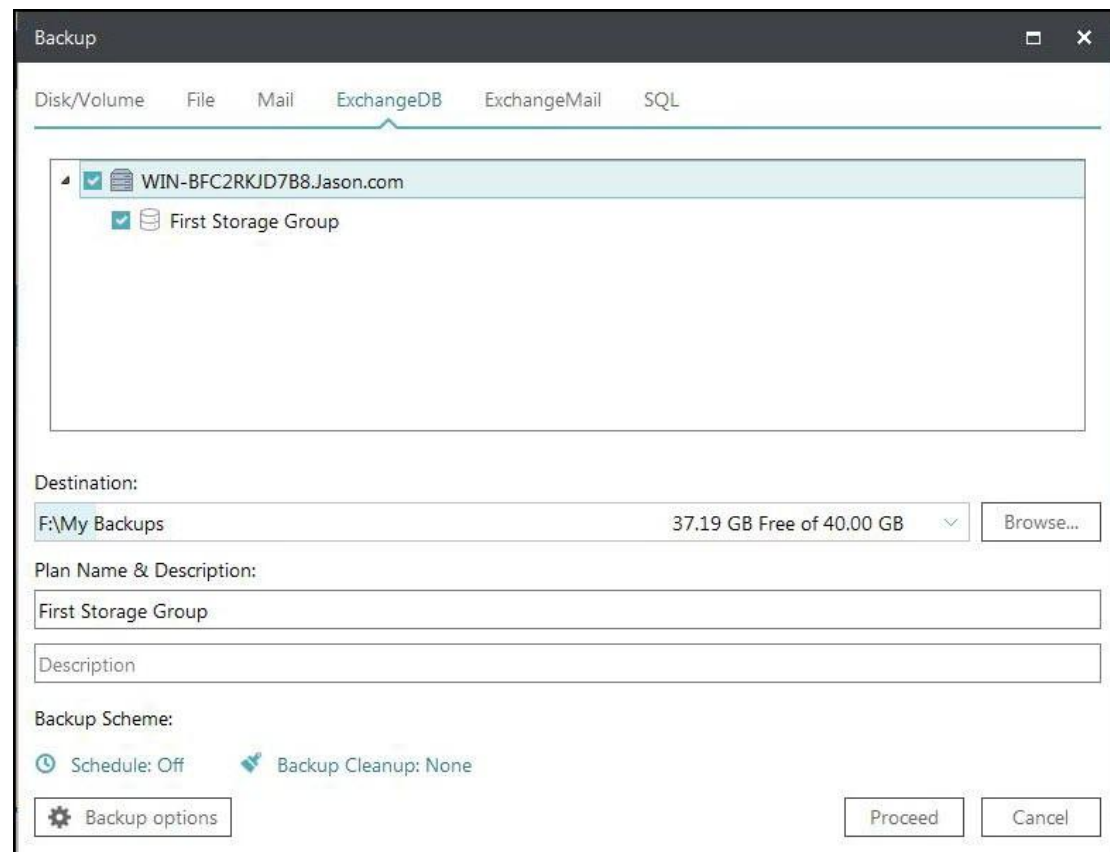
*EaseUS Todo Backup supports the following Exchange versions:
Exchange 2003, 2007, 2010, 2013 and 2016*

Start backup

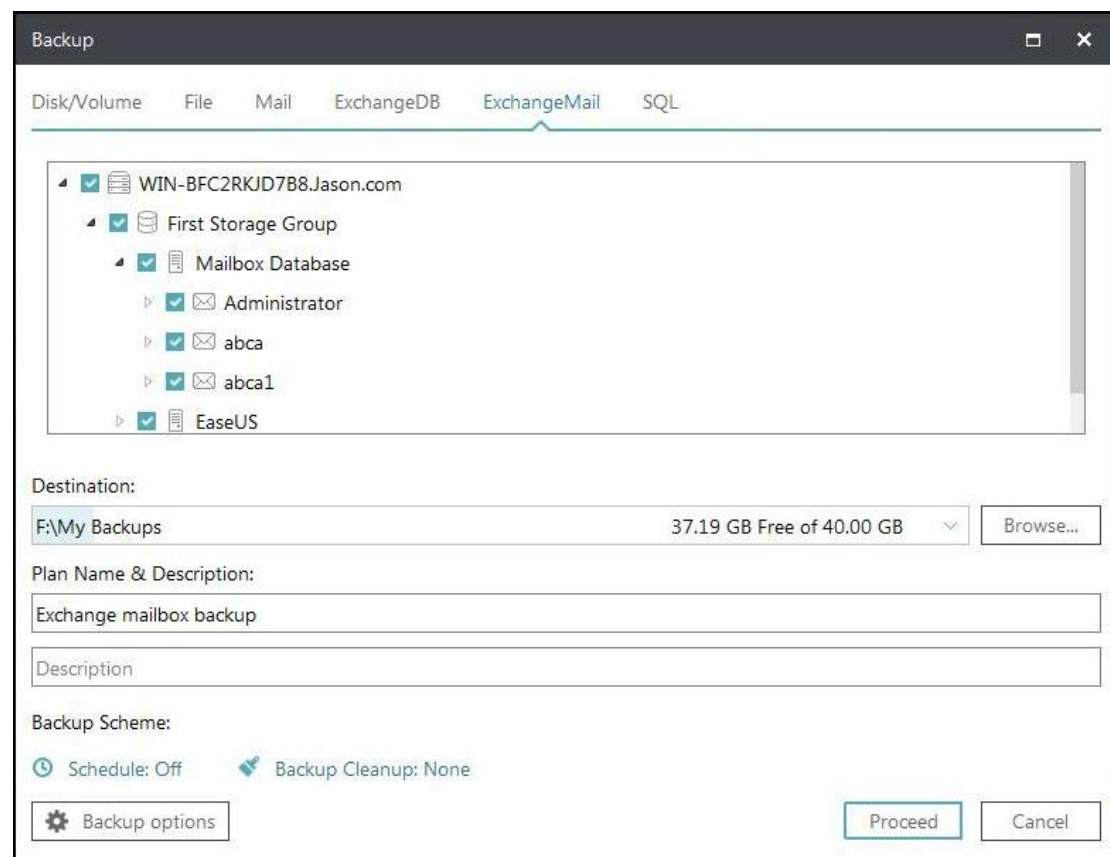
Please ensure the Exchange server is mounted before executing the backup task. Then click **Other Backups > Exchange backup** in backup area to start the process.

1. Specify the task/plan name and Description.
2. Select the backup source. Now there are two ways to backup Exchange.

Storage group mode



Mailbox mode



3. Specify where to save the image file. A Local disk, Network directory or Tape drive can be set as the backup destination. Click the Down Arrow to get the destination history.
4. Click **Proceed** to finish the setting. The backup will be executed immediately if the schedule is not configured.

Start recovery

This is a reverse process of Exchange backup. You can restore Exchange storage groups or mail folder with this feature.

1. Locate the Exchange backup plan and click Recovery.
2. Choose one History version of the Exchange images.
3. Specify which storage group/mailbox to recover. It is unnecessary to choose the entire content if you just want to recover part of it, such as only choosing one storage group in an image file which includes multiple storage groups.
4. Confirm every detail about the current recovery, click Proceed to implement it. EaseUS Todo Backup will automatically recover the storage group to its original location, so you don't need to specify the destination.

Note:

Existing mail will not be overwritten when recovering an Exchange mailbox backup image.

SQL Backup

SQL is an acronym of Structured Query Language which is designed for managing data in relational database management systems. Produced by Microsoft, the main function of **Microsoft SQL Server** includes insert data, query updates/deletes, create/modify schema, and data control access, etc.

MS SQL 2005/2008/2008 R2/2012/2014/2016 are supported by EaseUS Todo Backup.

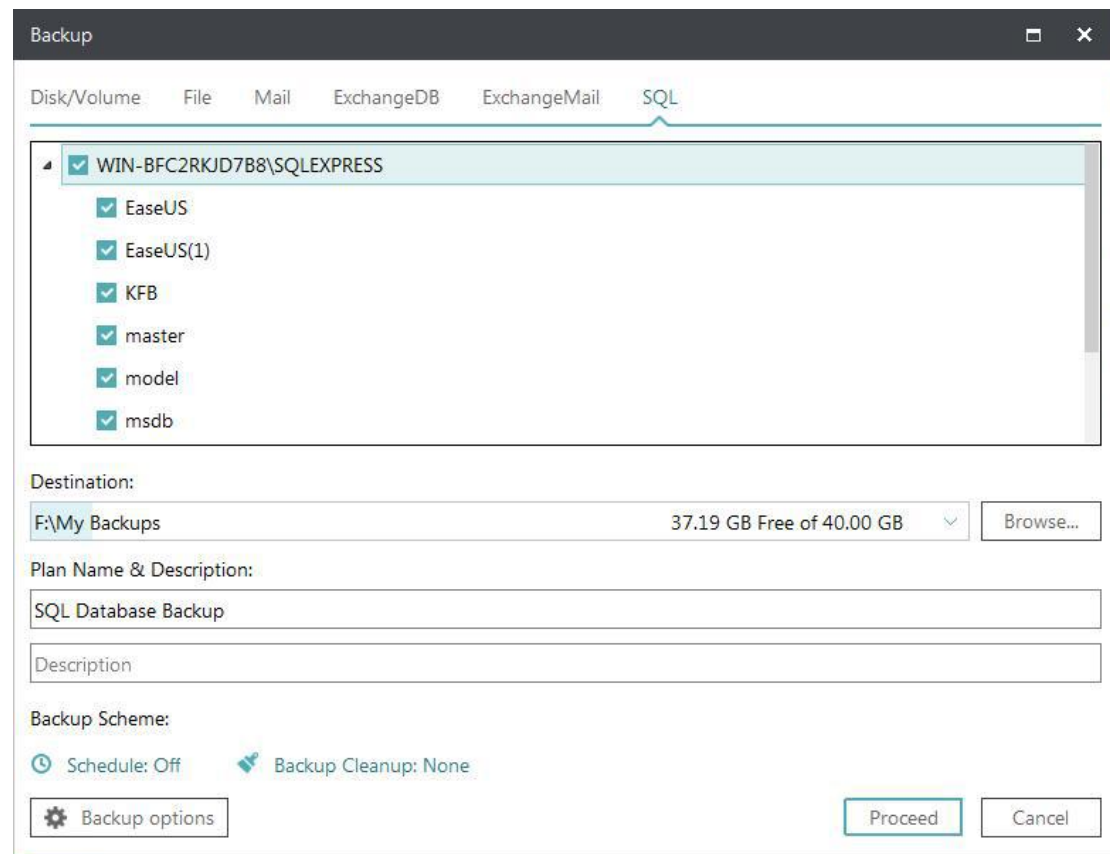
The extension of MS SQL backup image file is **.PBD**.

User Authentication

Click **NEW TASK > SQL** in the menu. An authentication box will pop up. Input a valid Windows administrator or a SQL server account to get through the authentication. The authentication can also be finished by the function **TOOLS > SQL Credential Manager**.

Start backup

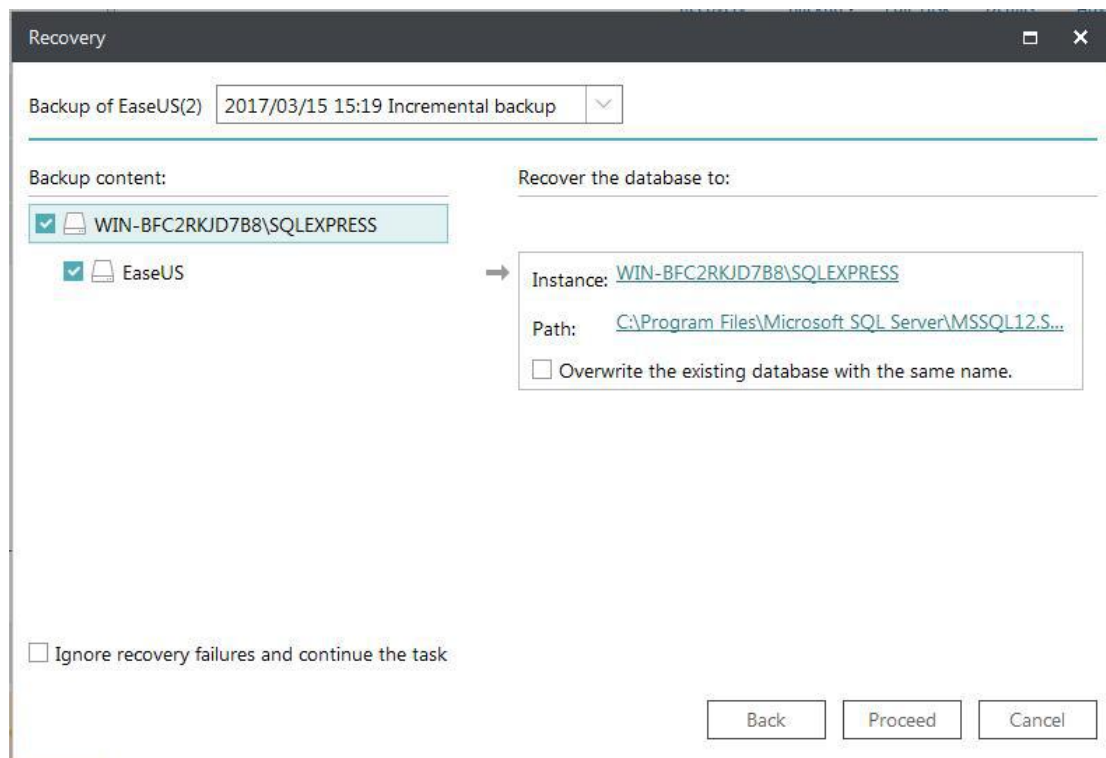
After authenticating, you will be presented with a SQL backup function.



1. Specify the task/plan name and Description.
2. Check the Instance or database you want to back up.
3. Specify where to save the image file. A Local disk, Network directory or Tape drive can be set as the backup destination. Click the Down Arrow to get the destination history.
4. Click **Proceed** to finish the setting. The backup will be executed immediately if the schedule is not configured.

Start recovery

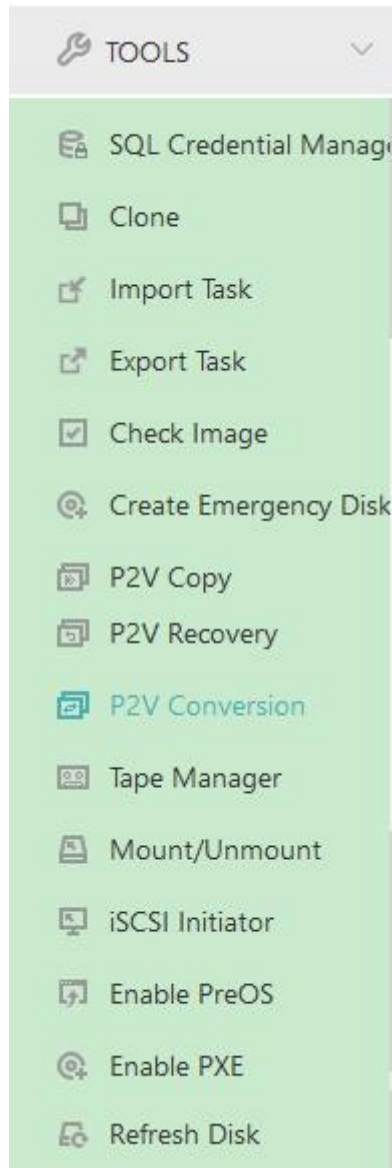
This is a recovery process of SQL backup.



1. Locate the plan backup plan and click **Recovery**.
2. Choose one History version of the SQL images.
3. Specify which Instance and Path to recover. The Overwrite function can be checked if you need to overwrite the existing database with the same name.
4. Confirm every detail about the current recovery, click Proceed to implement it. EaseUS Todo Backup will automatically finish the recovery.

Tools

There are some useful options in **Tools** menu. Part of them can make your backup/recovery process more efficient and flexible.

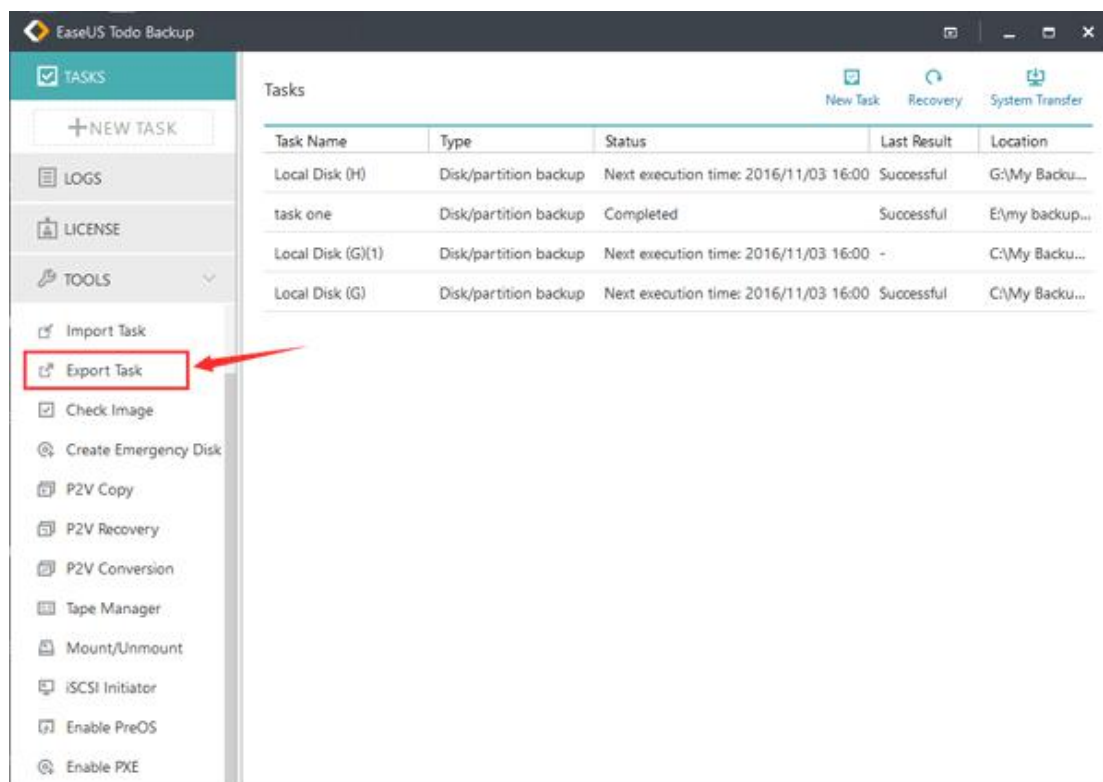


Import/Export Task

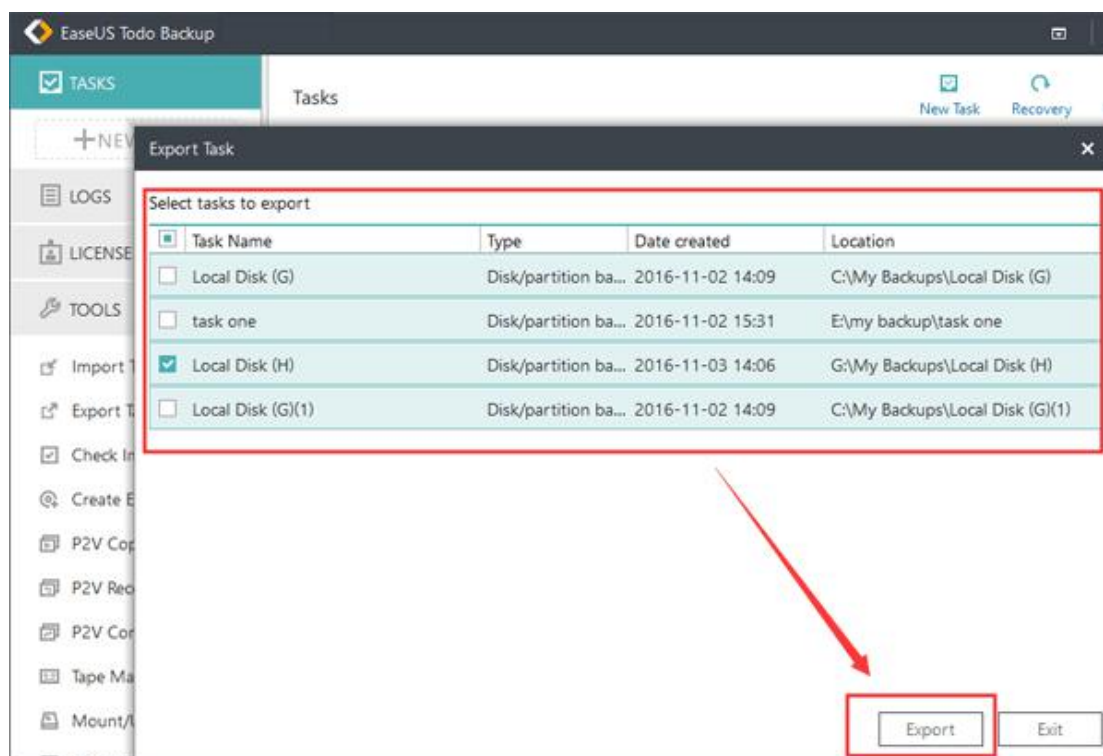
To export and archive your backup tasks is an efficient method to protect all the tasks you make from being accidentally lost or damaged due to program or system upgrades and other potential disasters. The exported tasks are able to be imported at any time to your computer or any other computers with Todo Backup installed.

Export Task

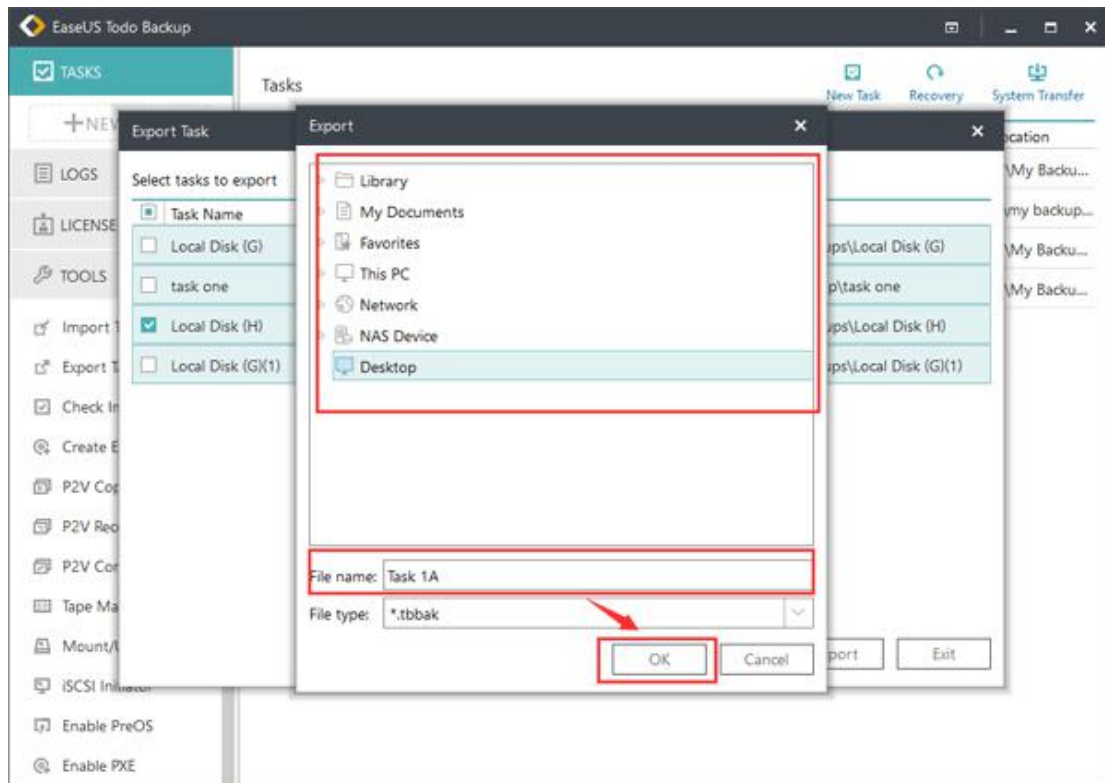
1. Click **Export Task** under **TOOLS**



2. All the existing backup tasks in Todo Backup will be listed in “Export Task” window. Select the ones you would like to export and click “**Export**”

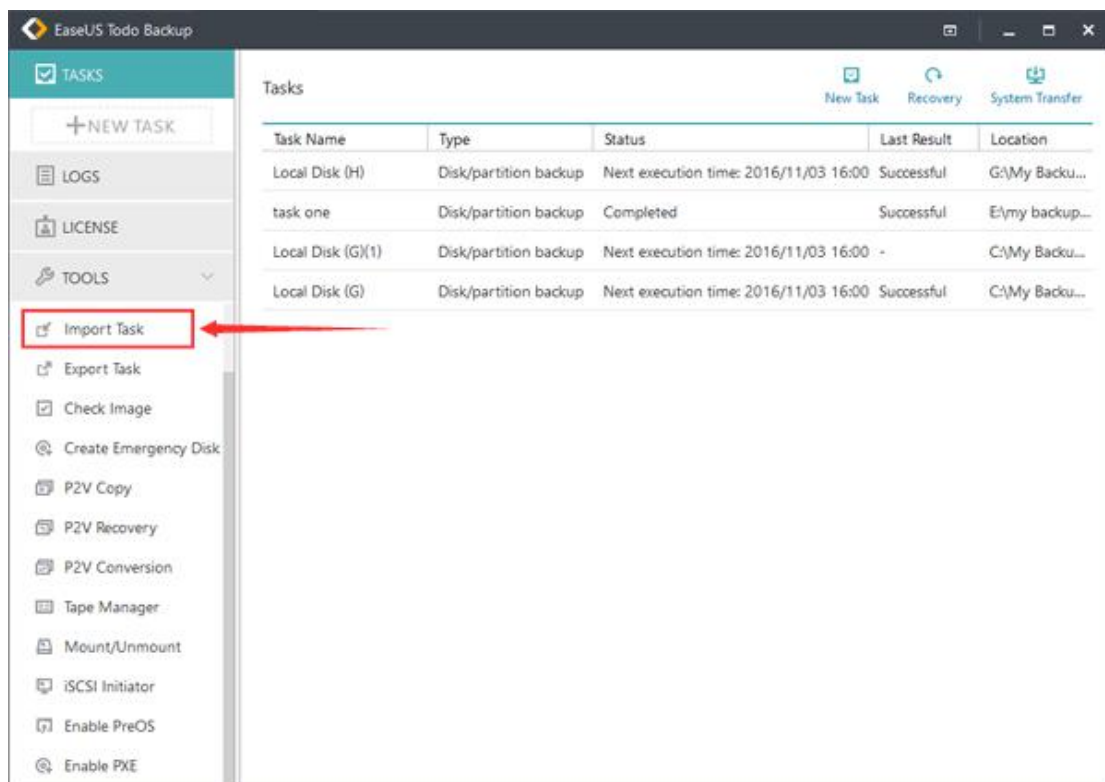


3. Rename the file and select your destination to save it. The file will be saved using the suffix “.tbbak”.

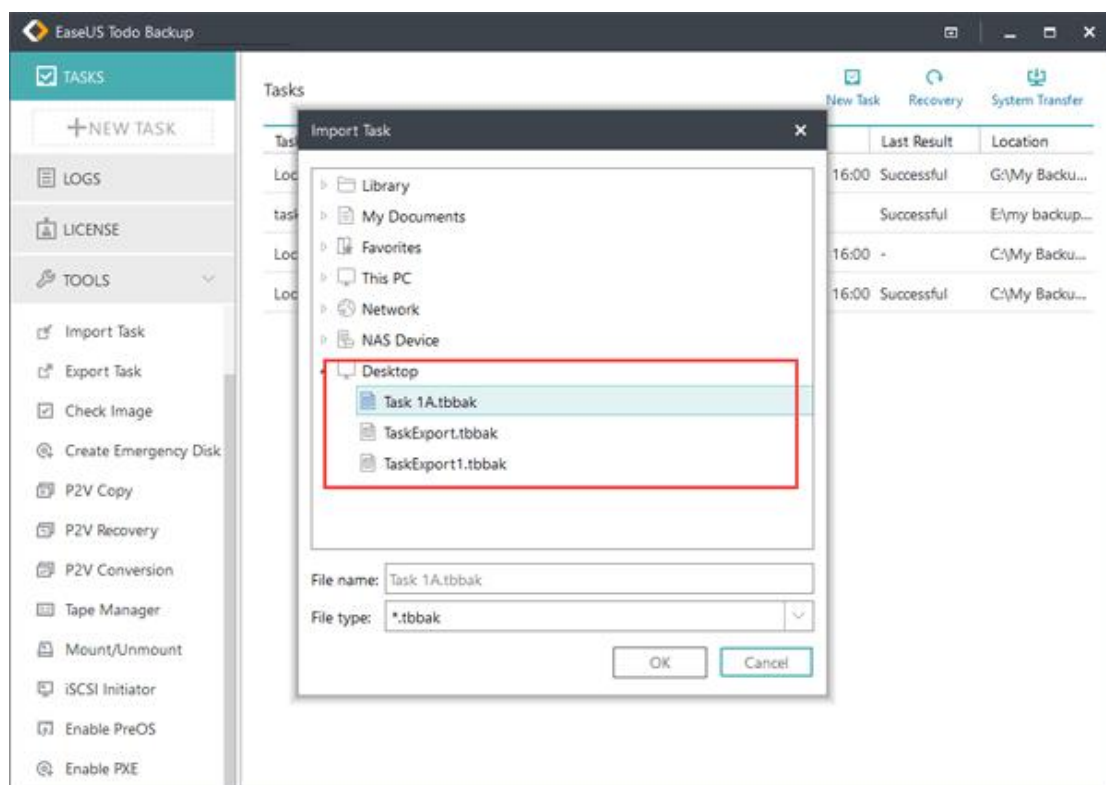


Import Task

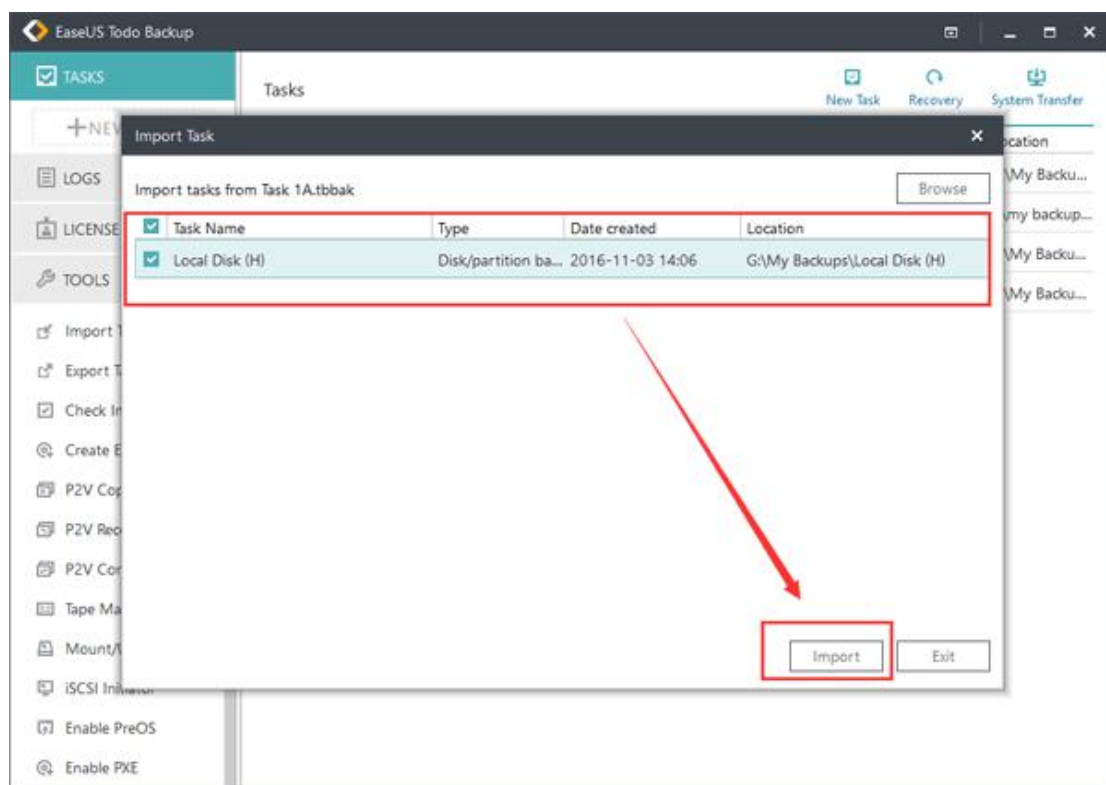
1. Click “Import Task” under “TOOLS”



2. Go to the destination and select the “.tbbak” file you would like to import.



3. Select the tasks you want to reuse and Click “Import”



4. Return to the Task Window. The imported backup task will be listed there.

Tip:

Newly imported backup task may fail to be executed at the scheduled time as the previously specified backup source could not be located or the target path could not be accessed with the change of hard drive configuration.

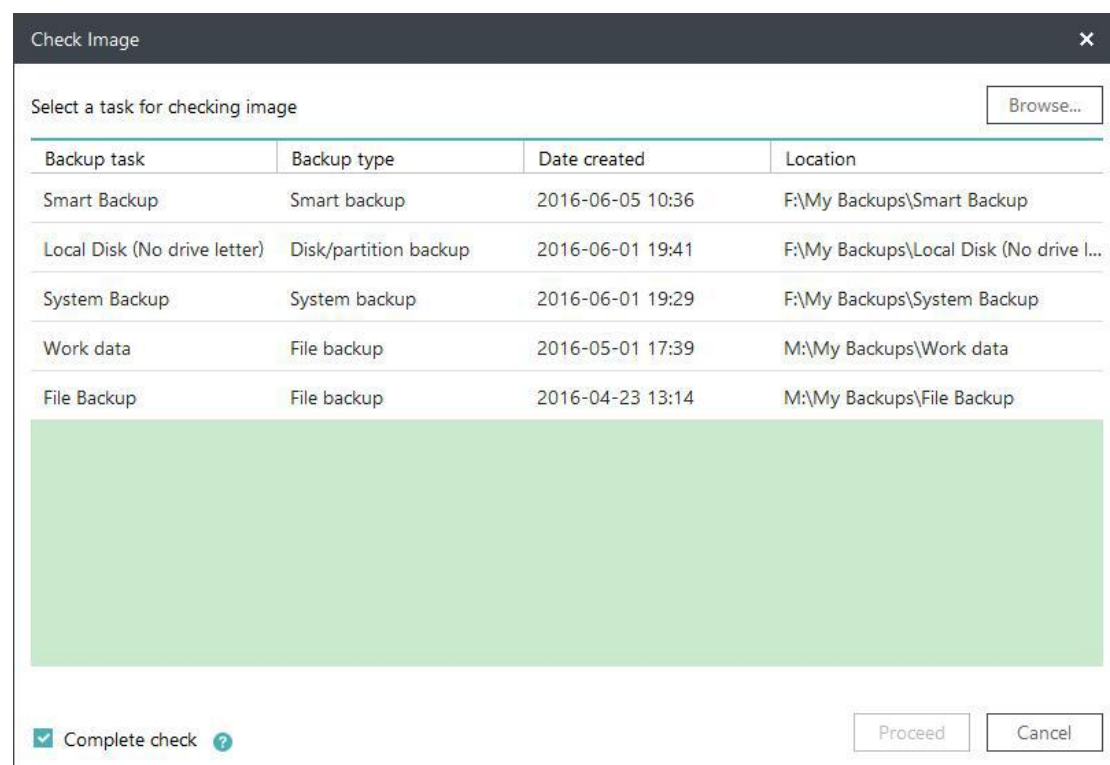
When that happens, please edit the task and update your settings.

Due to the reason above, when you use the task onto another computer, it is highly suggested to check and update all the settings after the task is imported to make sure the task is able to be correctly executed.

Check Image

Check image can verify the validity of an image file. If our product finds errors during checking process, then the image file might be damaged and cannot be used for recovery.

After clicking **Check Image**, select one backup plan to verify all related image files, or click **Browse** at the top right corner to check one image file only.



Note:

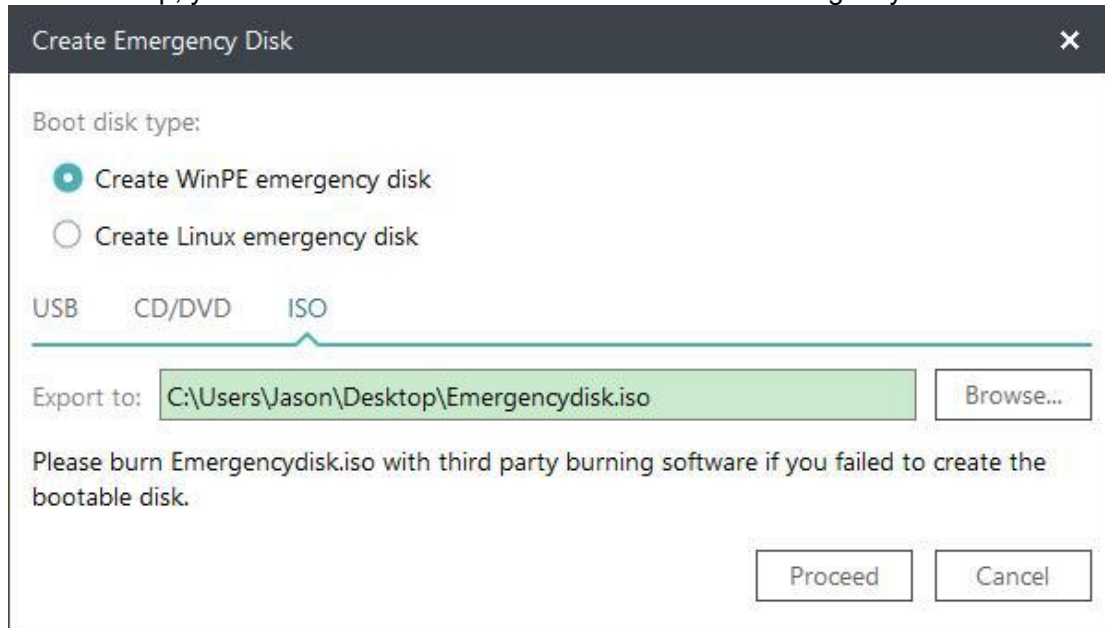
All the images under this backup plan will be checked. So it would take a long time if the backup plan has a large number of images.

Create Emergency Disk

EaseUS Todo Backup allows users to create an emergency USB disk or CD/DVD. It is indispensable when windows system fails to boot.

Procedure of creating emergency disk

1. Click **Tools - Create emergency disk**.
2. In this step, you have a choice to create a WinPE or Linux emergency disk.



3. Select **USB** to create an emergency USB disk or choose **CD/DVD** to burn an emergency CD/DVD, then click **Proceed**.

Note:

To learn more information between WinPE and Linux emergency disk, please click [here](#).

Some useful articles about WinPE bootable disk

Hard Drive Fails to List in WinPE. Click [here](#).

Network Access Issue in WinPE. Click [here](#).

Tape Manager

If you always save images to tapes for long term storage, it may be difficult to figure out what a tape contains without a physical label. We provide this feature to help you manage the image in tape.

Under this option, you can **Copy** the image from tape to local drive, **Eject** and **Wipe** the tapes.

Enable/Disable Pre-OS

Pre-OS can be considered as an alternative of WinPE bootable disk. So it can also help you recovering system when unexpected failure occurs.

Switch the status of Pre-OS between Enable and Disable.

The name of the button depends on the current status of Pre-OS. If Pre-OS is currently enabled, the button will be Disable Pre-OS.

Once the Pre-OS enabled, you will get a EaseUS boot menu when computer boots. After select it, you will get into EaseUS Todo Backup instead of Login Windows.

There are two kinds of Pre-OS environment for different editions.

Linux Pre-OS

For all Trial editions which is based on Linux environment and only contains basic **Recover** and **Clone** options.

Windows Pre-OS

The Linux Pre-OS will be converted to Windows version after [WinPE](#) created. Nearly all features are available in this environment.

ISCSI Initiator

Connect and configure the iSCSI device.

There are two connection modes.

Quick connect

On the **Targets** tab, type name or IP address of the target device in **Quick Connect** text box, then click **Quick Connect**.

Advanced connection

1. Click the **Discovery** tab.
2. Click **Discover Portal** to add the target portal. Type the **IP address** or **name** to connect.

Once connected, you can backup and restore the iSCSI drive like local hard drive.

Enable PXE

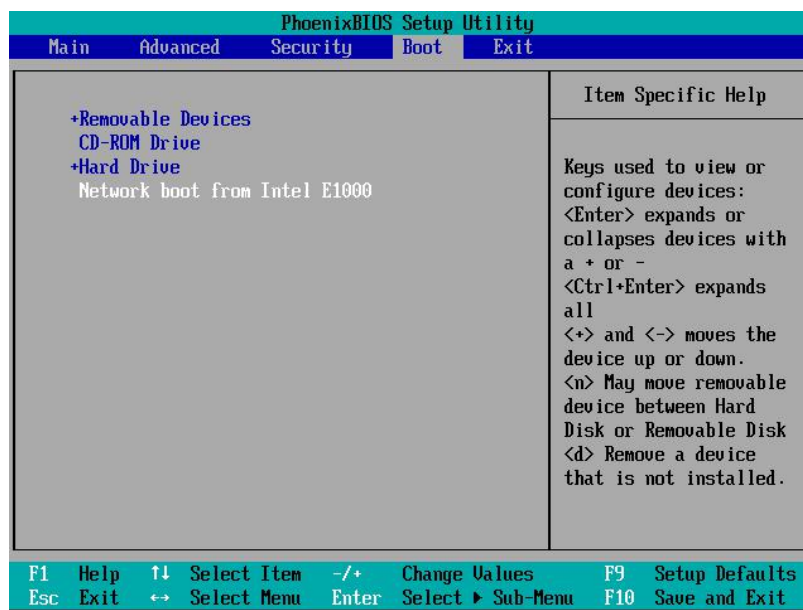
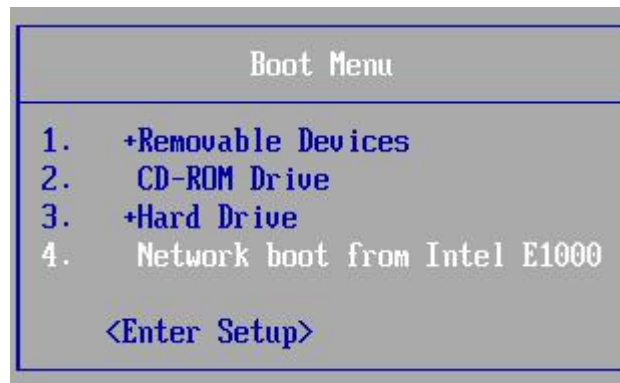
The PrebootExecution Environment can boot computers with network interface independently of data storage devices.

EaseUS Todo Backup PXE server allows users to launch EaseUS Pre-OS Environment on target machines with network booting. It is especially useful for bare metal recovery or network deployment.

This feature is available in **EaseUS Todo Backup Server Edition**, **EaseUS Todo Backup Advanced Server Edition** and **EaseUS Todo Backup Technician Edition**.

You just need to click "**Enable PXE**" in **Tools** to enable PXE option. Our product will configure boot image directory automatically.

Confirm the Network Interface Card of a client machine which supports PXE boot, please choose "**Network boot**" in BIOS. If the network connection to PXE server is available, the client machine will boot from the network.

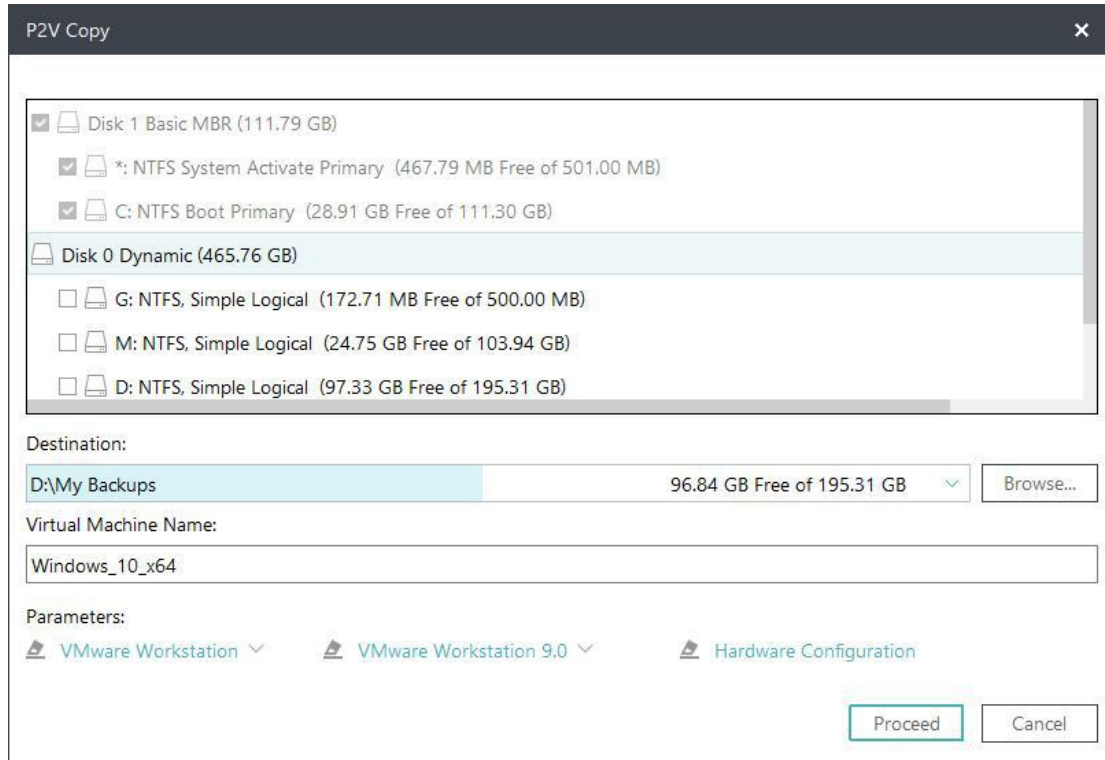

Note:

Make sure there is a working DHCP (Dynamic Host Control Protocol) in your network, so that the booting computers can automatically get IP addresses and boot into EaseUS Todo Backup PXE environment.

P2V Copy

EaseUS Todo Backup provides P2V tool for customers to migrate drive from Physical machine to Virtual machine conveniently and efficiently.

When you want to convert a running system to virtual environment. Please click **Tools > P2V copy**. It can help you create a Virtual Machine without backup & recovery.



1. Specify the disk/partition(s) to convert. System and boot partition has been selected by default and cannot be deselected. You can add other partitions and disks to convert together.
2. Specify the destination to save the virtual machine. Local disk and Network directory can be set as the destination. Click the Down Arrow to get the destination history.
3. Configure the parameters for the virtual machine.

Virtual machine name

Edit the name of virtual machine, EaseUS Todo Backup will name the machine with the operating system by default.

Virtual software vender

Specify the type of virtual machine which you convert to, VMware Workstation and MS Virtual PC are supported.

Version

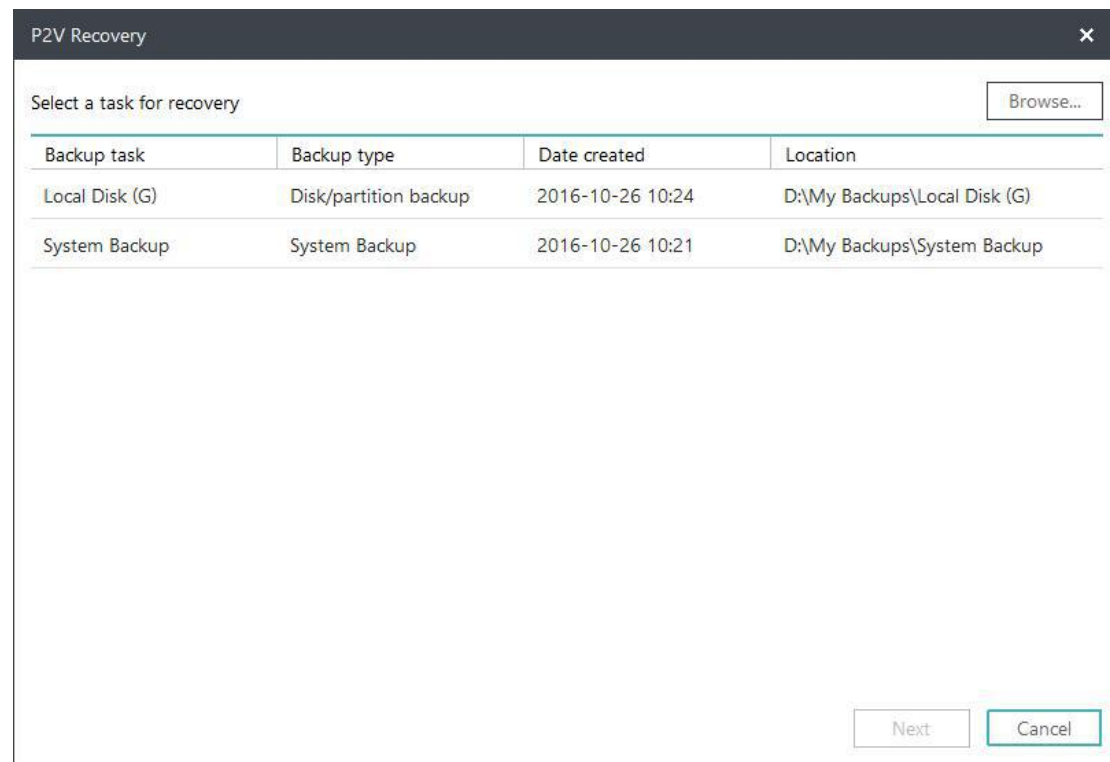
Select a proper version so that the converted virtual machine could work with your virtual software correctly.

Edit virtual machine

Configure the settings for virtual machine, including number of processors & cores, memory size, hard disk type and capacity.

P2V Recovery

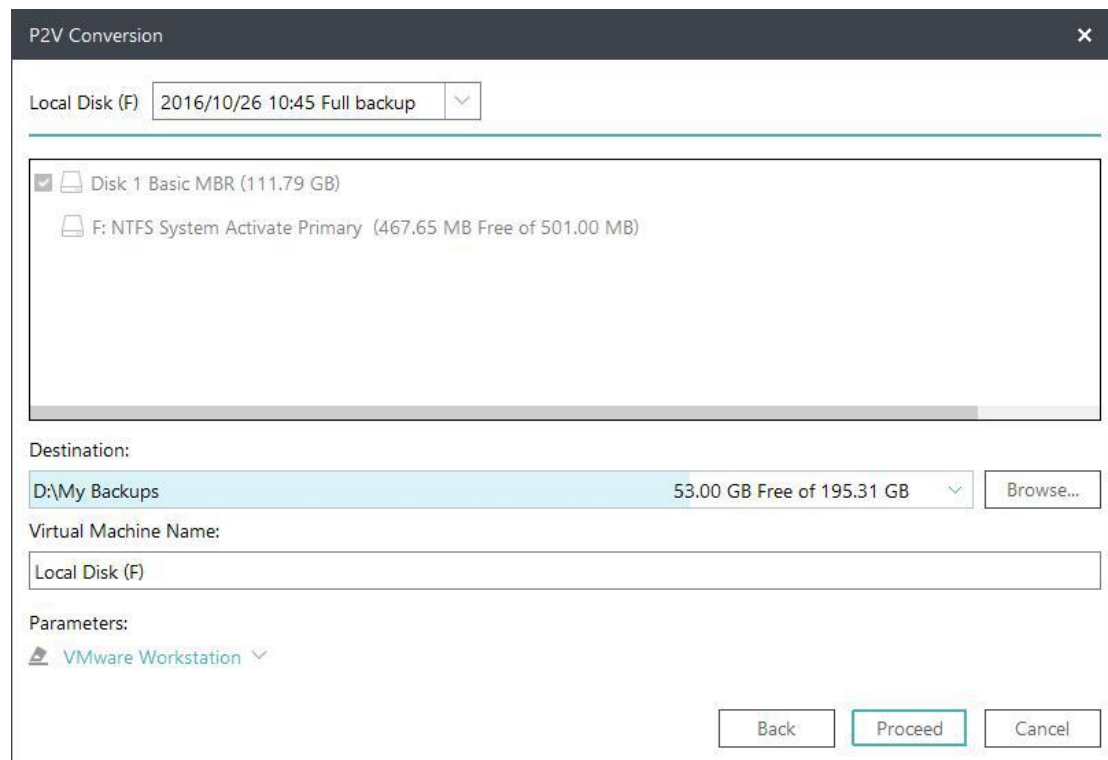
You can directly restore an EaseUS disk/backup image to virtual machine with P2V Recovery. Click **Tools > P2V recovery**.



1. Select a backup plan to restore. The backup must be System backup or a Disk/Partition backup included system. If the backup is not in the list, please manually locate it by clicking **Browse**.
2. Specify the destination to save the virtual machine. Local disk and Network directory can be set as the destination. Click the Down Arrow to get the destination history.
3. Configure the parameters for the virtual machine.

P2V Conversion

It is easy to convert a created EaseUS disk/partition image to virtual disk, please click **Tools > P2V conversion**.



1. Select a backup plan to restore. If the backup you want to recover is not in the list, manually locate it by clicking **Browse**.
2. Choose the partition(s) or hard disk(s) to convert.
3. Specify the destination to save the virtual disk. Local disk and Network directory can be set as the destination. Click the Down Arrow to get the destination history.
4. Configure the parameters for the virtual disk.

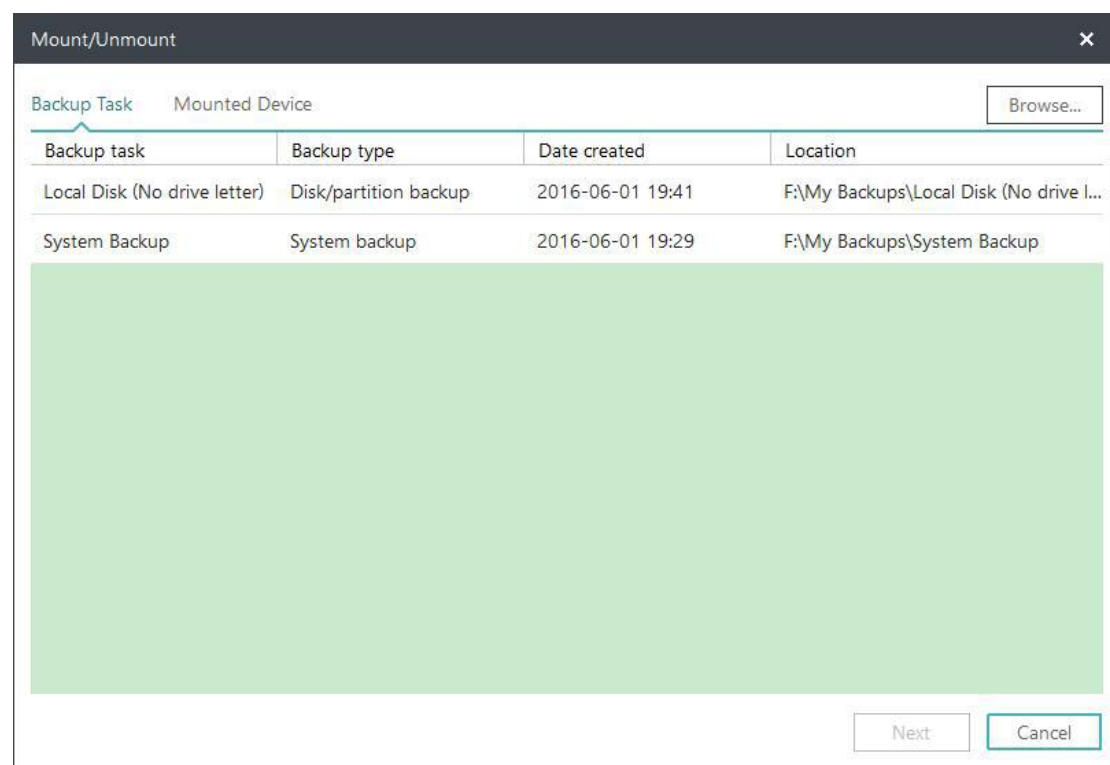
Virtual disk name - Specify the name of the virtual disk

Virtual software vender - Select VMware or Virtual PC to create .vmdk or .vhd

Mount/Unmount

In order to browse/confirm the files and folders in a disk/partition image or system image (*.PBD file), we provide the mount function. Users can directly copy needed files from the mounted drive without restoring entire image.

Besides, mount function is a good way to check whether the created image is valid or not.



1. **Tools > Mount/Unmount**, all available backups will be listed under **Backup Task**.
2. Select one backup and click **Next**.
3. Select the **Source** and click **Next** to proceed mount operation.

If you need to unmount the image, please click **Mounted Device** on above interface to continue.

Tips:

Disk/Volume backup and System backup image are supported only.

A password is necessary for encrypted backup image.

To fully access mounted virtual partition, please make sure the image is created and mounted in same Windows account.

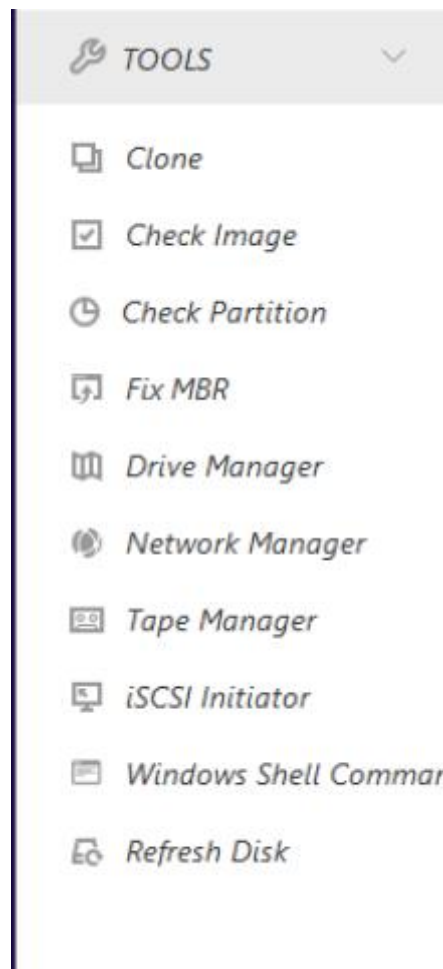
Mounted drive will automatically disappear after computer restarts.

Refresh Disk

Refresh Disk is used to load the latest status of local hard drives after a disk is updated or newly added when our product is still running. It is also necessary to use this option after adding driver file of a disk in WinPE.

Special Tools in WinPE

In WinPE and Pre-OS environment, some options in **Tools** menu are replaced by a new option to ensure the recovery process in WinPE can be finished smoothly.



Windows Shell Command

Invoke MS-DOS command box to input different user commands to make backup tasks more efficient and safe. For example, checking errors before backing up a partition with CHKDSK, add hardware driver with Drvload or create a partition with DISKPART.

The knowledge of Windows Command statement is required to use this advanced option,

Driver Manager

Since hardware RAID, SCSI and some network cards cannot be directly recognized without drivers installed in WinPE and Pre-OS environment, So we provide this option to help user add driver for a specific hardware and ensure you can finish the recovery job without interruption.

Network Manager

With this option, user can manage or configure network access parameters if the operation needs to read shared folder but our product failed in the first try.

Map network drive - Map a network drive as a local drive to backup or restore.

Edit network drive - Change parameters of the mapped drive.

Disconnect network drive - Remove mapped drive created with **Map network drive** option.

IP settings - Configure the IP parameter.

Fix MBR

Fix MBR can help you get rid of some boot problems. It will write fresh boot information to the MBR sector.

You can locate this feature in **Tools** in WinPE Pre-OS or WinPE emergency environment, click **Fix MBR**, choose the disk you want to repair and then press **Proceed**.

Check Partition

A partition with logic errors may fail to back up with our product, so it is necessary to check and fix errors before backup. This feature is available in WinPE Pre-OS or WinPE emergency environment, click **Tools > Check partition**, choose the partition and check **Automatically fix file system errors**, after that click **Next** to start the operation.

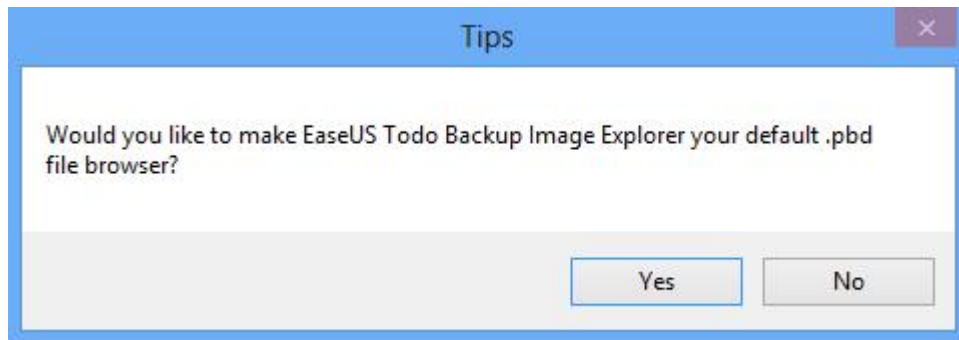
Image Tool

Thank you for using **EaseUS Todo Backup Image Explorer**. It is to extract files/folders from a .PBD image file without installing **EaseUS Todo Backup**. Being less than 3 MB, it is simple and easy use, managing files as Windows Explorer.

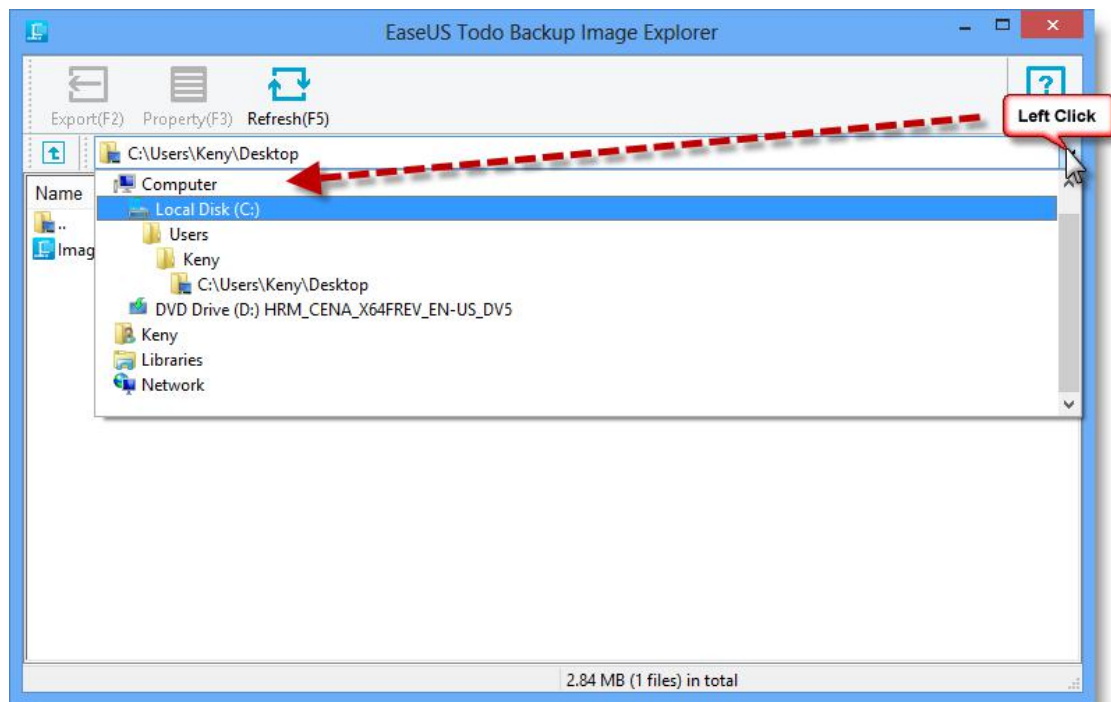
How to Use

Here is to guide you how to extract files from .pbd image file with Image Tool.

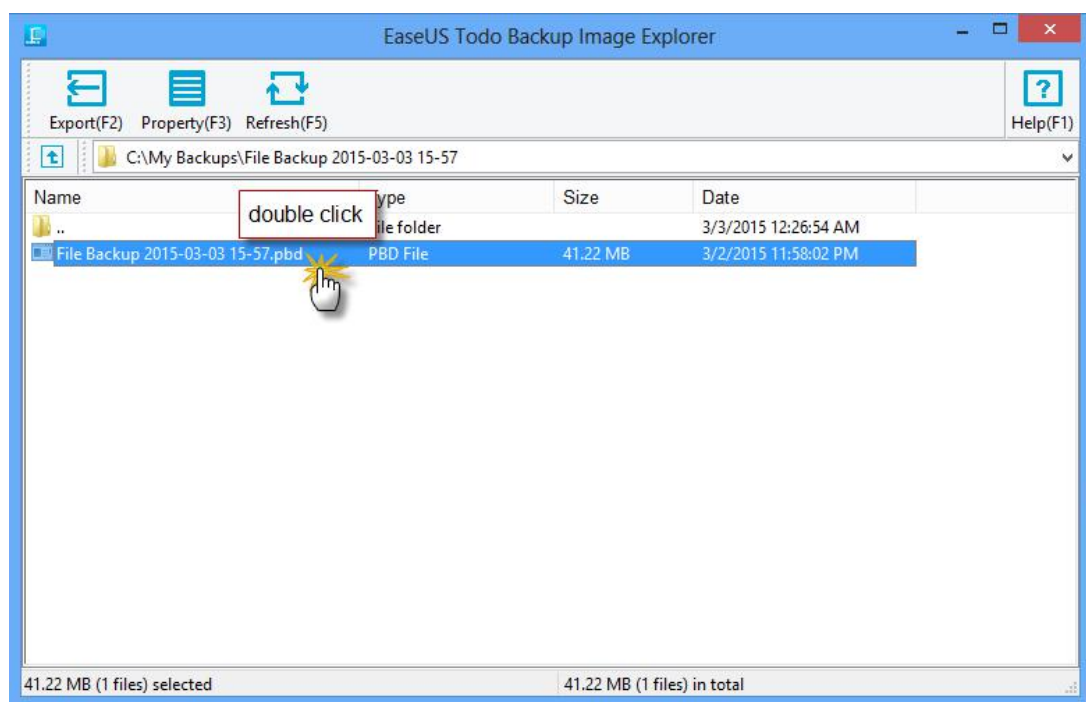
1. [Download](#) **EaseUS Todo Backup Image Explorer** then launch it. Tick **Yes** in pop-up window below to build connection between .pbd image file and Image Tool.



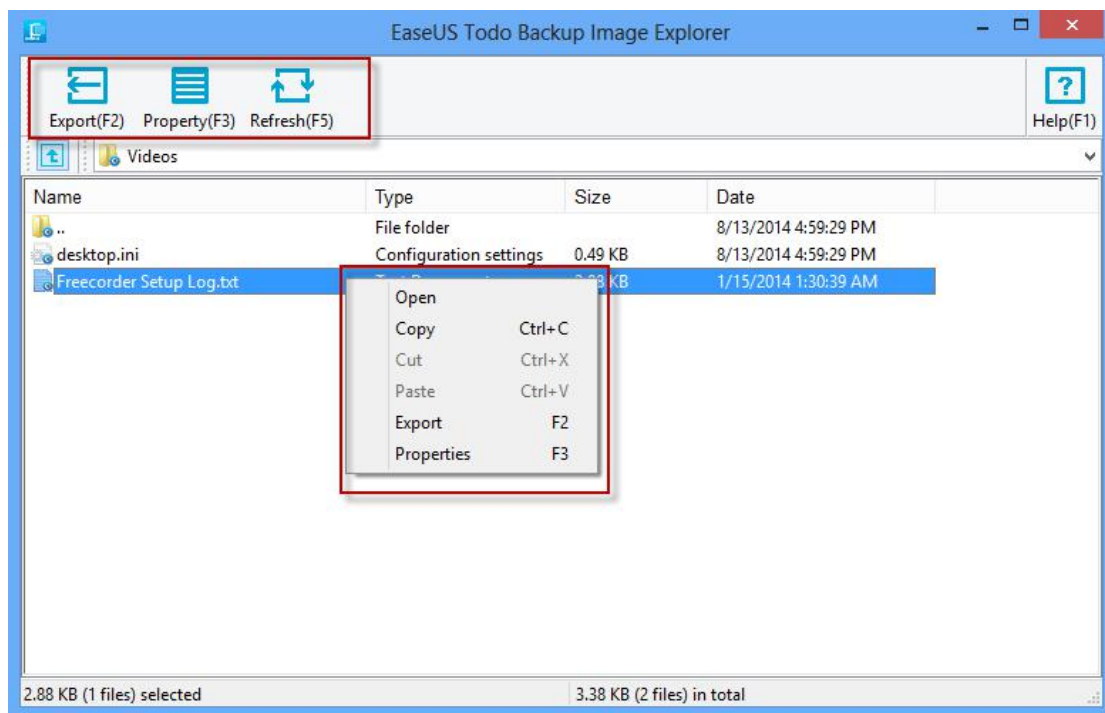
2. Desktop folder will be automatically displayed. Click the marked drop-down arrow to unfold other paths.



3. Locate the .pbd image file and double click it.

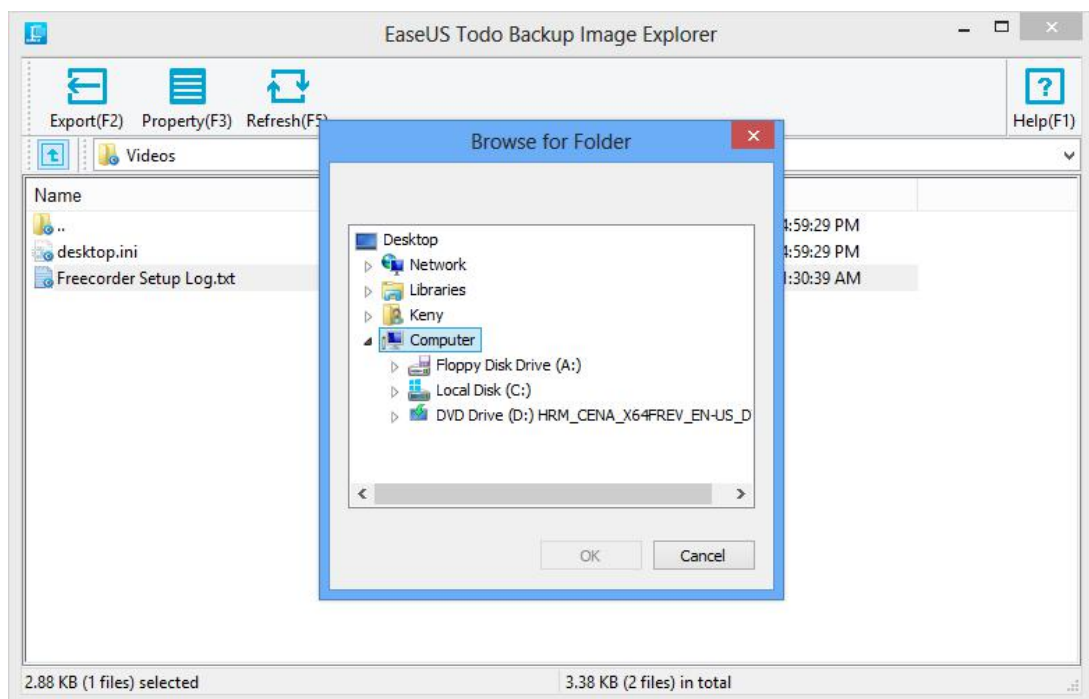


4. All files and folders belong to .pbd image file are marked with EaseUS logo.



To check the desired content, please click **Property (F3)** or directly **Open** the file/folder.

5. To extract the desired file/folder, please click **Export (F2)** or **Copy** in right-click menu.



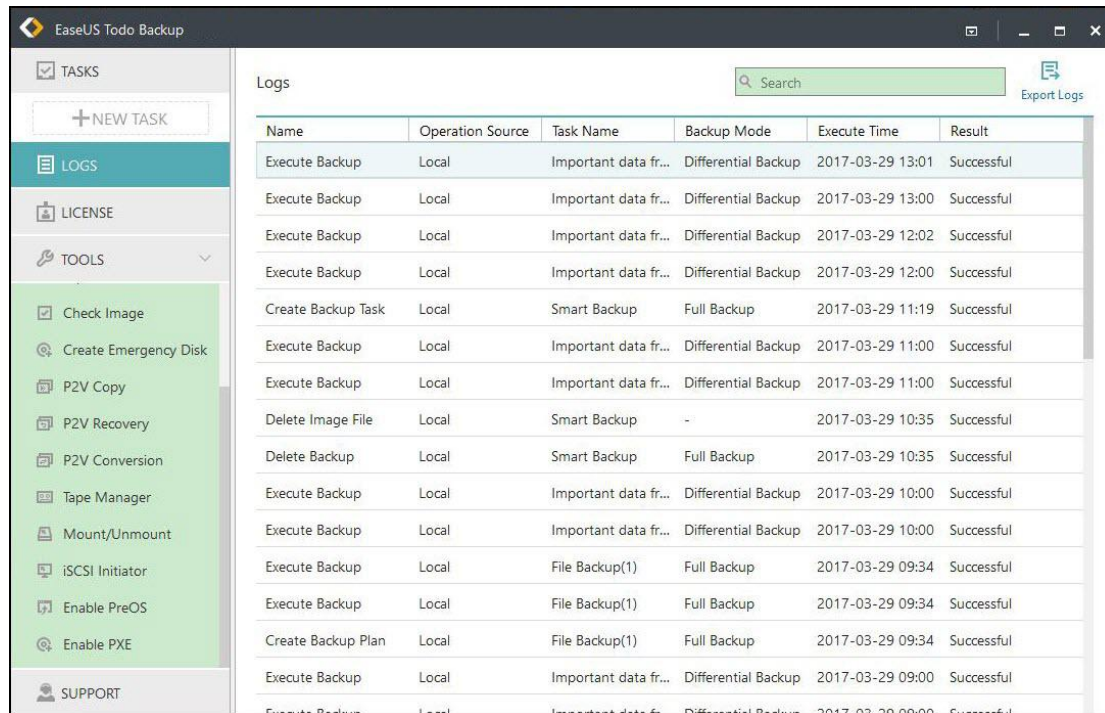
Tips:

An additional copy of Image Tool is automatically created in "C:\Program Files\EASEUS\".

To completely uninstall Image Tool, please manually delete it after uninstallation.

Logs

All the backup operations and statuses are recorded in **Logs**. Failed operations are marked in red. Click **Log Details** for reference.



Name	Operation Source	Task Name	Backup Mode	Execute Time	Result
Execute Backup	Local	Important data fr...	Differential Backup	2017-03-29 13:01	Successful
Execute Backup	Local	Important data fr...	Differential Backup	2017-03-29 13:00	Successful
Execute Backup	Local	Important data fr...	Differential Backup	2017-03-29 12:02	Successful
Execute Backup	Local	Important data fr...	Differential Backup	2017-03-29 12:00	Successful
Create Backup Task	Local	Smart Backup	Full Backup	2017-03-29 11:19	Successful
Execute Backup	Local	Important data fr...	Differential Backup	2017-03-29 11:00	Successful
Execute Backup	Local	Important data fr...	Differential Backup	2017-03-29 11:00	Successful
Delete Image File	Local	Smart Backup	-	2017-03-29 10:35	Successful
Delete Backup	Local	Smart Backup	Full Backup	2017-03-29 10:35	Successful
Execute Backup	Local	Important data fr...	Differential Backup	2017-03-29 10:00	Successful
Execute Backup	Local	Important data fr...	Differential Backup	2017-03-29 10:00	Successful
Execute Backup	Local	File Backup(1)	Full Backup	2017-03-29 09:34	Successful
Execute Backup	Local	File Backup(1)	Full Backup	2017-03-29 09:34	Successful
Create Backup Plan	Local	File Backup(1)	Full Backup	2017-03-29 09:34	Successful
Execute Backup	Local	Important data fr...	Differential Backup	2017-03-29 09:00	Successful
Execute Backup	Local	Important data fr...	Differential Backup	2017-03-29 09:00	Successful

These operations can be performed:

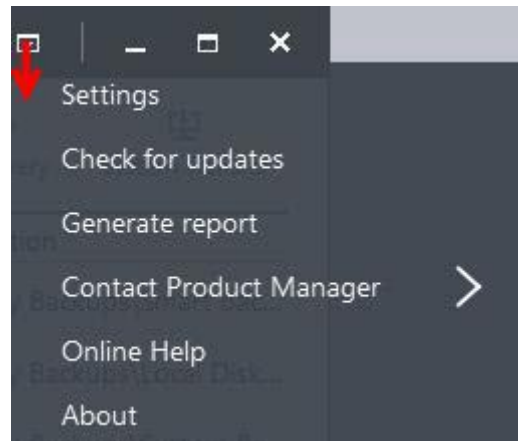
Export all - Output all logs to a TXT or XLS file.

Clear all - Delete all logs.

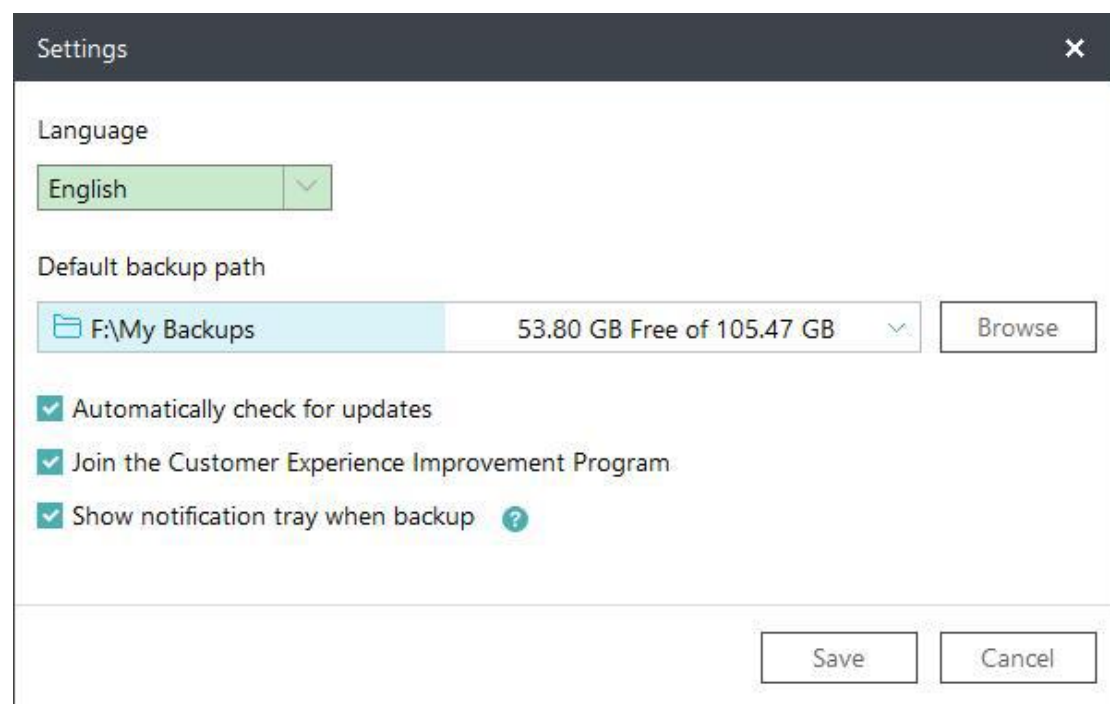
Details - Show the detailed records of one backup plan

Basic Settings

There is a drop-down menu at the top right corner, click it, there will be an option **Settings** in the menu.



Click **Settings** will bring you the following configuration panel, the first two options are very important. You may switch among German, English, Spanish, French, Italian and Japanese and so on in **Language** box and edit/modify **Default backup path** here.



For the other three check boxes, there will be no update report if you uncheck the option **Automatically check for updates**.

Join the Customer Experience Improvement Program can help us improve our product better with the info from your daily operation with our product.

Todo backup will not show any notification tray if you uncheck the **Show notification tray when backup**.

Support

If you cannot find what you are looking for in this help, we encourage you to visit our [Knowledge Base](#) which includes solutions for some common issues and detailed guide regarding how to use EaseUS Todo Backup.

When you encounter an error/problem, please **Generate report** and sent it to us, so we can assist you more efficiently.

