

EaseUS® Todo Backup User Guide

For Home and Free Edition



Table of contents

Welcome.....	- 4 -
Getting Started.....	- 4 -
Hardware Requirements.....	- 4 -
System Requirements.....	- 4 -
Supported File Systems.....	- 4 -
Supported Hard Disks.....	- 4 -
Activation.....	- 5 -
Edition Comparison.....	- 7 -
Home Page.....	- 8 -
Backup.....	- 10 -
System Backup.....	- 10 -
Disk/Partition Backup.....	- 11 -
File Backup.....	- 13 -
Smart Backup.....	- 15 -
Mail Backup.....	- 16 -
Schedule Backup.....	- 17 -
Schedule Settings.....	- 18 -
Backup method.....	- 19 -
Image Reserve Strategy.....	- 20 -
Created Backup Edit.....	- 21 -
Backup Options.....	- 22 -
Cloud backup.....	- 25 -
Recovery.....	- 26 -
System Recovery.....	- 27 -
Disk/Partition Recovery.....	- 29 -
File Recovery.....	- 33 -
Smart Recovery.....	- 35 -

Mail Recovery.....	- 36 -
Browse to Recover.....	- 37 -
Individual File Recover.....	- 38 -
System Transfer.....	- 39 -
Clone.....	- 41 -
Disk Clone.....	- 41 -
Partition Clone.....	- 44 -
Tools.....	- 45 -
Check Image.....	- 46 -
Create Emergency Disk.....	- 47 -
Wipe Data.....	- 49 -
Enable/Disable Pre-OS.....	- 49 -
ISCSI Initiator.....	- 50 -
Mount/Unmount.....	- 50 -
Special Tools in WinPE.....	- 51 -
Windows Shell Command.....	- 52 -
Driver Manager.....	- 52 -
Network Manager.....	- 52 -
Fix MBR.....	- 53 -
Check Partition.....	- 53 -
Image Tool.....	- 53 -
Logs.....	- 56 -
Basic Settings.....	- 58 -
Support.....	- 59 -

Welcome

Thank you for using **EaseUS Todo Backup**. Being an integrated solution for crucial data and powerful OS protection, **EaseUS Todo Backup** is spread over millions of home computers. Focusing on efficient and stable backup, **EaseUS Todo Backup** is dedicated to safeguarding the operating system, emails, disks, partitions, documents, photos, pictures and musics, etc.

EaseUS Todo Backup generates the .pbd images for your reliable backups, which are to be promptly and easily recovered in the case of system crash, partition/disk corruption, virus infection and unexpected data loss, etc. Being distinguished from OEM backup solutions, NO extra hidden partitions are to be created or required on your hard drive to get EaseUS Todo Backup perform a backup or restore.

Getting Started

This part outlines basic parameters to use **EaseUS Todo Backup**. It is to help you acquire a general understanding before you get started.

Hardware Requirements

500 MHz processor or faster

A minimum of 1 gigabytes (GB) RAM; A minimum of 2 GB RAM for Window 8/8.1/10

A minimum of 1 GB of available space on the hard disk

CD-R/RW, DVD-R/RW, DVD+R/RW or DVD+R DL drive

Keyboard, mouse and other compatible pointing devices

System Requirements

Make sure you are running any one of listed operating systems:

- Windows XP®
- Windows Vista®
- Windows® 7
- Windows® 8
- Windows® 8.1
- Windows® 10

Supported File Systems

EaseUS Todo Backup supports file systems, including FAT12, FAT16, FAT32 and NTFS. Other files systems are shown to be **Other**. EaseUS Todo Backup supports the sector-by-sector **Backup** and **Clone** of **Other** Partition/Volume.

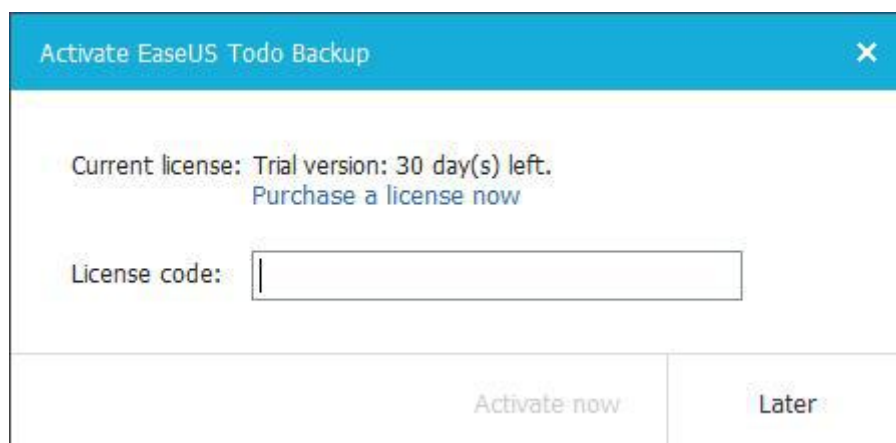
Supported Hard Disks

EaseUS Todo Backup supports disks, including IDE, EIDE, SATA, ESATA, ATA, SCSI, iSCSI, USB 1.1/2.0/3.0 disk and Firewire disks. As for CD-R/RW DVD-R/RW DVD+R/RW DVD+R DL, **EaseUS Todo Backup** supports saving backup images to them without issue.

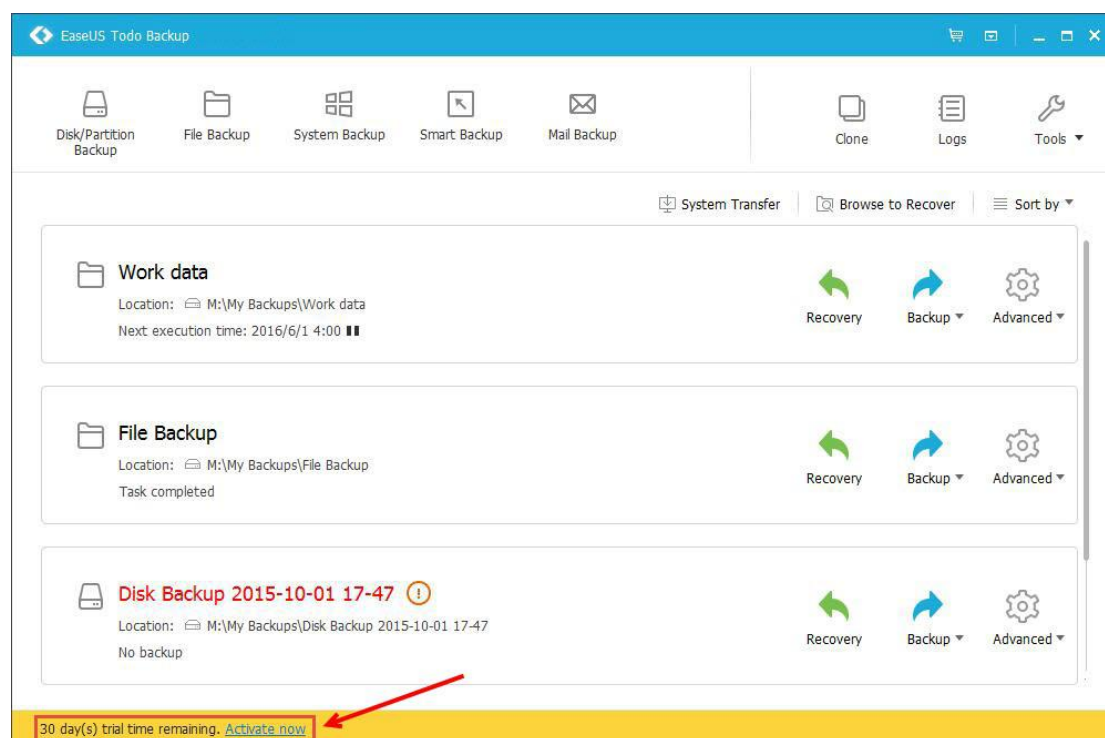
Dynamic disk, MBR and GPT disks are supported. EaseUS Todo Backup supports the disk capacity up to **16TB**.

Activation

An activation window is prompted when you launch EaseUS Todo Backup Trial first time. Enter the code consisted of 25 digits and letters in Trial to upgrade to full version.

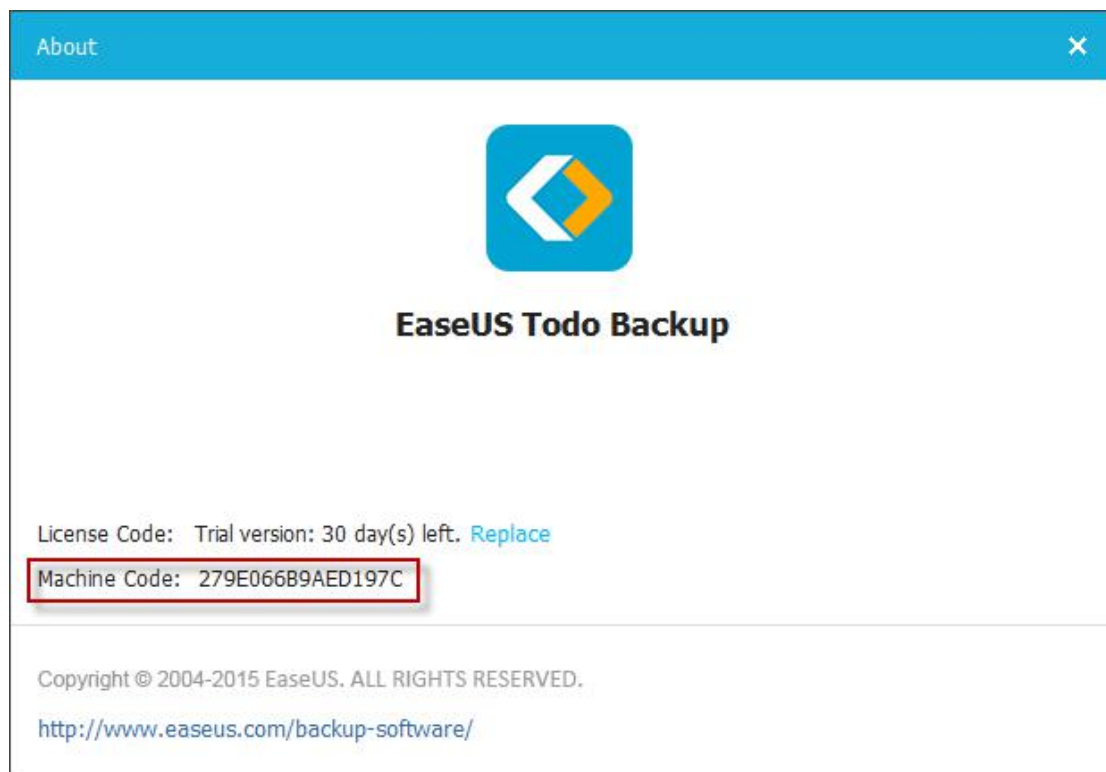


If the first activation request was skipped, the **Activation Now** button at the bottom of the main page can bring you the activation window again.




Offline activation

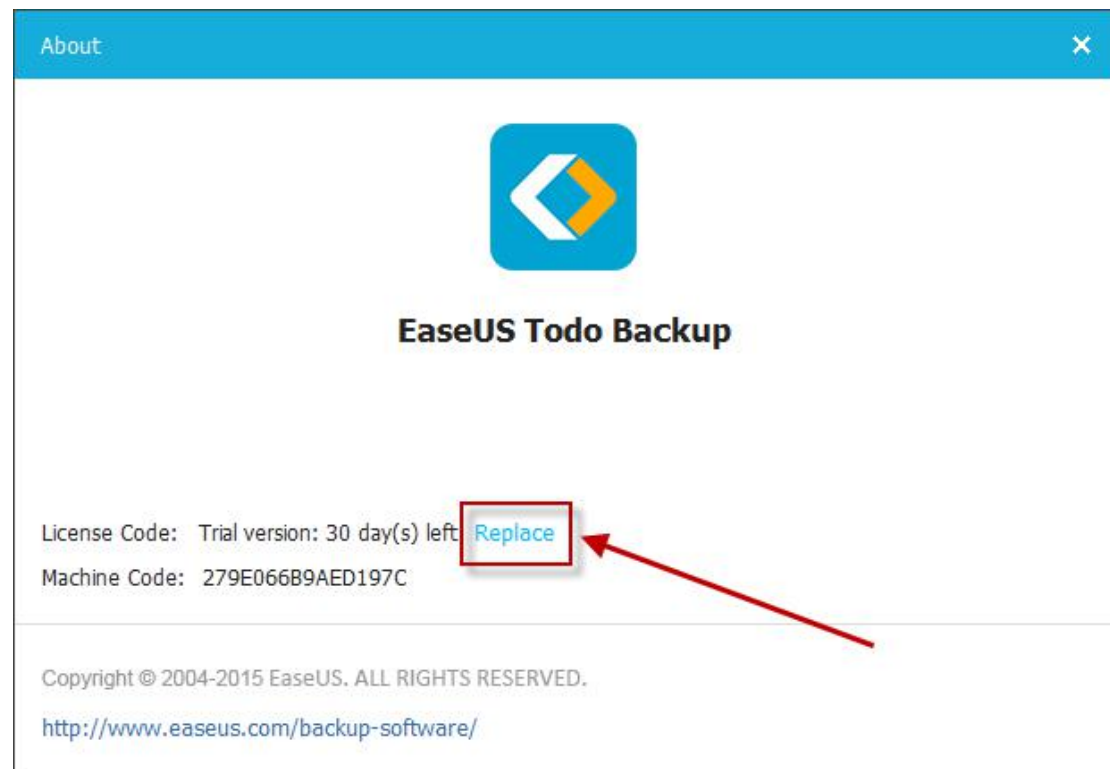
To get offline activation when your computers is off Internet connection, please click [here](#).

***Tips:***

Machine code is a unique ID generated by EaseUS Todo Backup on the basis of your hardware information. It is closely tied with license code.

Replace license code

If you want to enter a new code on the machine which already have a code activated before, please click  button at the top right corner, then select **About > Replace**.

**Note:**

Each edition has its own license code. Only the codes to the same edition can be replaced.

Edition Comparison

For home users, EaseUS provides includes two editions, Home and Free edition.

Free Edition - Only used for home users. The license is intended to use the software only on one computer and only for your own personal use.

Home Edition - Basic version for home users. It has more features available, such as Backup/clone dynamic volume, System Transfer and Outlook Backup.

Tips:

Home edition has its trial edition, free of charge for 30 days' evaluation. Free edition can be activated to home edition directly with a home license code.

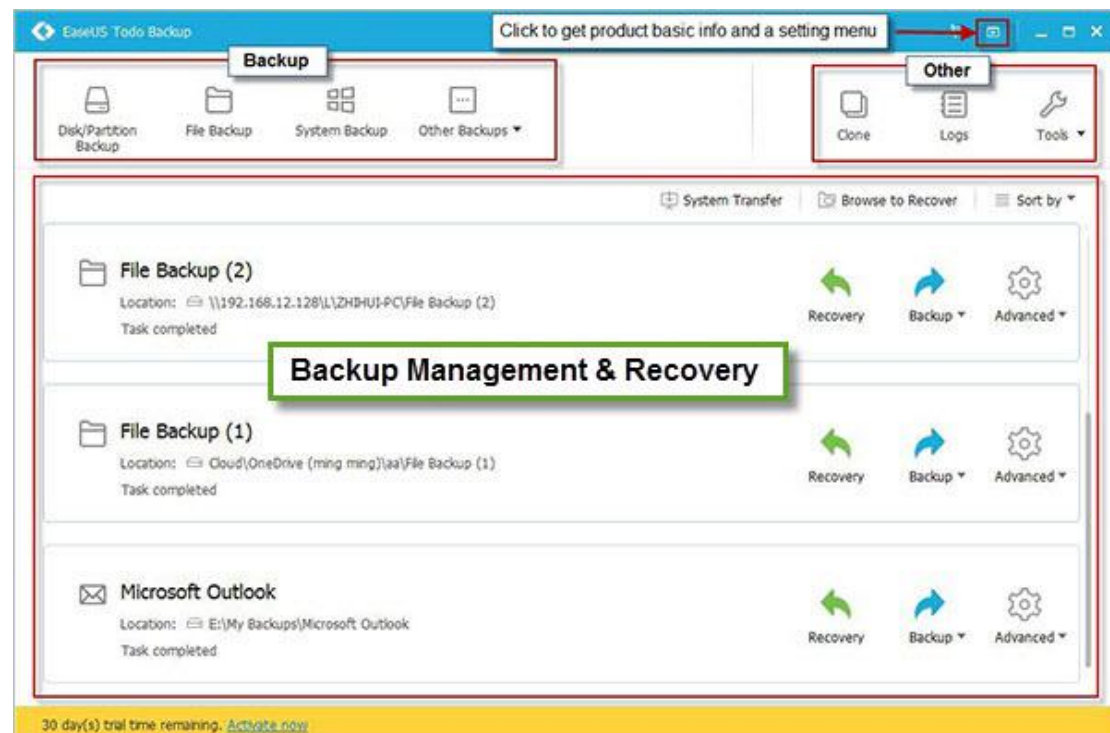
Feature Comparison

	Free	Home
Smart Backup	Y	Y
Disk/Partition backup	Y	Y

File backup	Y	Y
Incremental/Differential backup	Y	Y
Backup/clone dynamic volume		Y
Schedule backup	Y	Y
System backup	Y	Y
Image-reserve Strategy	Y	Y
System Transfer		Y
WinPE emergency disk	Y	Y
Enable PreOS	Y	Y
Windows right click backup menu	Y	Y
Outlook backup		Y
Email notification, pre/post-command		Y
File Exclusion		Y
Cloud backup	Y	Y

Home Page

Great improvements on UI has been made starting from Version 7.0, hoping to maintain the routine backup jobs in a more easily and smoothly way. The new home page constitutes three main areas.



Backup

The entries of all available backup options can be found in this area, with them, you can directly start a new backup job here.

About how to use each of them exactly, please read from the corresponding paragraph. [Disk/Partition backup](#), [File Backup](#), [System Backup](#), [Smart Backup](#), [Mail Backup](#);

Backup Management & Recovery

The old Backup Management page has been integrated in the home page and all created backup tasks are listed here. All basic info of a backup task can be directly found in the list. Including Plan name, Image location and you are also allowed to **Pause** an auto schedule here.

Besides, directly starting a recovery from this area since version 7.0 is possible. There is a **Recovery** icon for each backup record. Click it can bring you the Recover configuration page.

About the 2 separate recovery buttons, you can learn them from: [System Transfer](#), [Browse to recover](#).

Others

[Clone](#) option, [user log](#) and some other [useful tools](#) are located in this area.

Backup

Backup generally refers to creating copies of important data. With these copies, you can recover your data after an unexpected computer disaster. Therefore, the main purpose of backup can be summarized as an effective remedy for system failure or data loss.

The benefits to protect your system with a regular backup tool:

1. Backup can be scheduled (e.g. regular automatic backups that require no user interaction);
2. Backup changes can be appended incrementally or differentially (i.e. after a full backup, subsequent backups will take less time and occupy less space than the first one);
3. Backups allow you to keep several versions of the backed up data and you can restore to one of the previous versions (e.g. you can keep backups from one, two and three weeks ago on the same disk and you can recover the backup from the moment that you need);
4. Backup can be mounted and searched through (e.g. if you want to quickly find, view and copy a file from it).

User can easily get system running again after recovering a system image file to original drive even a new drive.

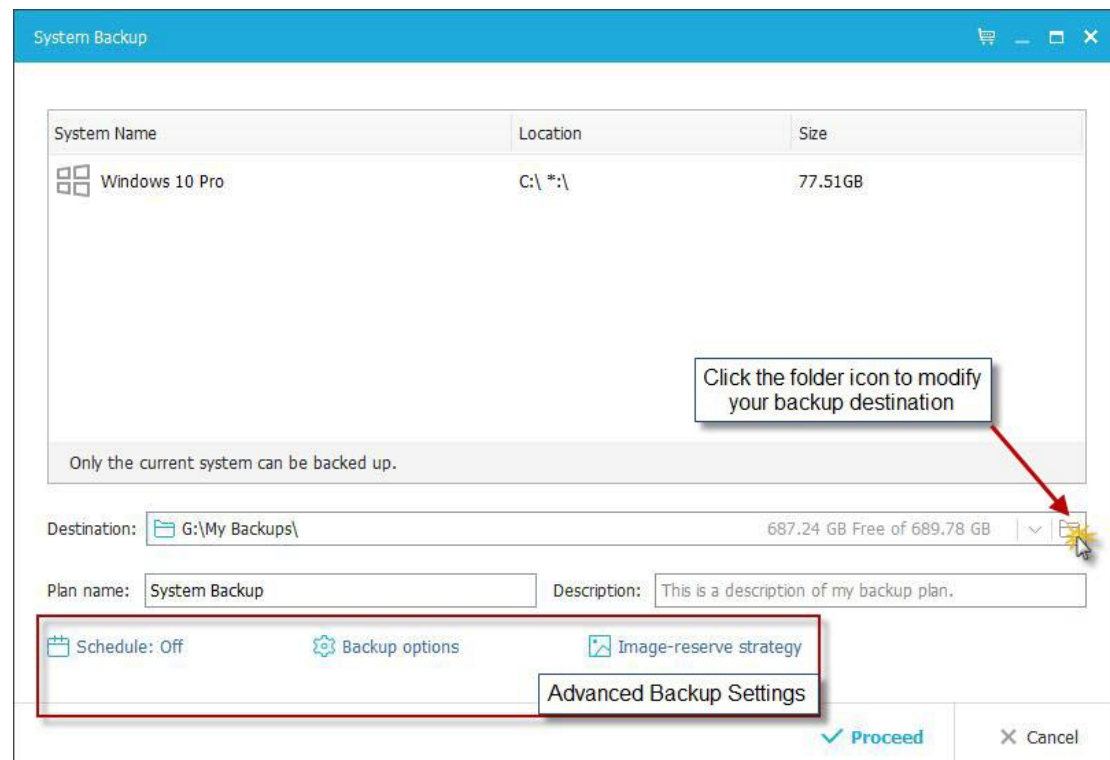
Tips:

In order to ensure a rapid and successful backup process, please close all other applications before starting the operation and never try to save the image file to the partition/disk which you are backing up.

System Backup

Windows Operation System is very important for a computer. It is very necessary to protect it in the event of system crashes.

EaseUS Todo Backup provides the easiest way to protect your operating system. As the necessary partitions for system boot will be selected as the backup target here automatically. You just need to perfect the **Destination**, **Plan name** and **Description**.



Basic Settings:

Destination - Click the folder icon to modify your backup destination.

Plan name and **Description** - An accurate plan name and appropriate description can help you find the needed image file easily.

Advanced backup settings

Advanced backup settings are useful when you want to create a flexible and automatic backup plan. **Schedule** is to create an automatic backup plan. **Backup options** is to edit the advanced parameters. **Image-reserve strategy** is to reserve the limited image as per image retention rule.

For more details, please click:

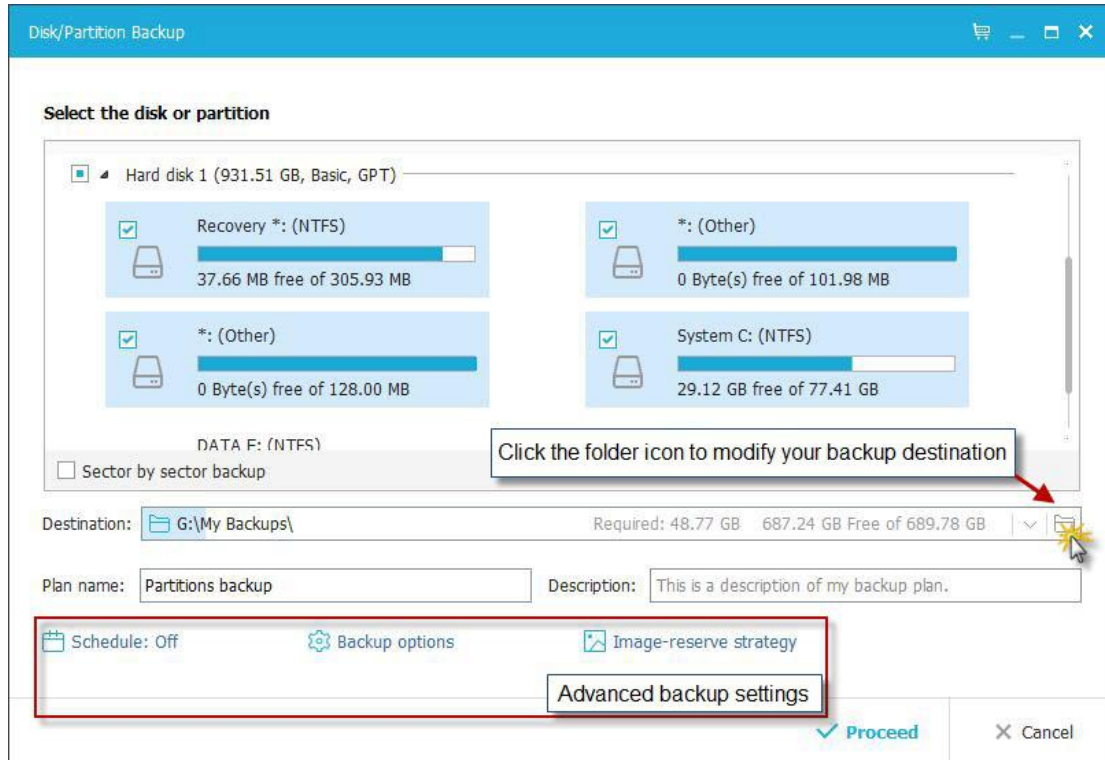
[Schedule](#), [Backup option](#), [Image-reserve strategy](#).

Tips:

Advanced backup settings are for reference only but not a prerequisite for backup.

Disk/Partition Backup

Suppose there is only one disk with more one partitions on your computer. System Backup is to back up the partition only where the system and boot partitions are saved. In this case, you should use **Disk/Partition Backup** to help you back up the rest data partition.



Basic Settings:

Sector by sector backup - All the data sectors and blank ones are to be backed up with **Sector by sector backup** checked. It is useful when file system error occurs. It slows down backup speed with a relatively larger image compared with normal backup.

Destination - Click the folder icon to modify your backup destination.

Plan name and **Description** - An accurate plan name and appropriate description will help you distinguish easily.

Advanced backup settings

Advanced backup settings are useful when you want to create a flexible and automatic backup plan. **Schedule** is to create an automatic backup plan. **Backup options** is to edit the advanced parameters. **Image-reserve strategy** is to reserve the limited image as per image retention rule.

For more details, please click:

[Schedule](#), [Backup option](#), [Image-reserve strategy](#).

Tips:

Advanced backup settings are for reference only but not a prerequisite for backup.

FAQ:

1. **What's the difference between System Backup and Disk/Partition Backup?**

A: Please click [here](#) to view the answer.

2. **Can I back up the network drive?**

A: No, EaseUS Todo Backup can just help you back up the files and folders on network drive. It cannot back up the whole network drive.

3. Where should I save backup image file?

A: You can save backup image to local hard drive, network drive, or other storage device. Please don't save the backup image to the same partition which you are willing to back up.

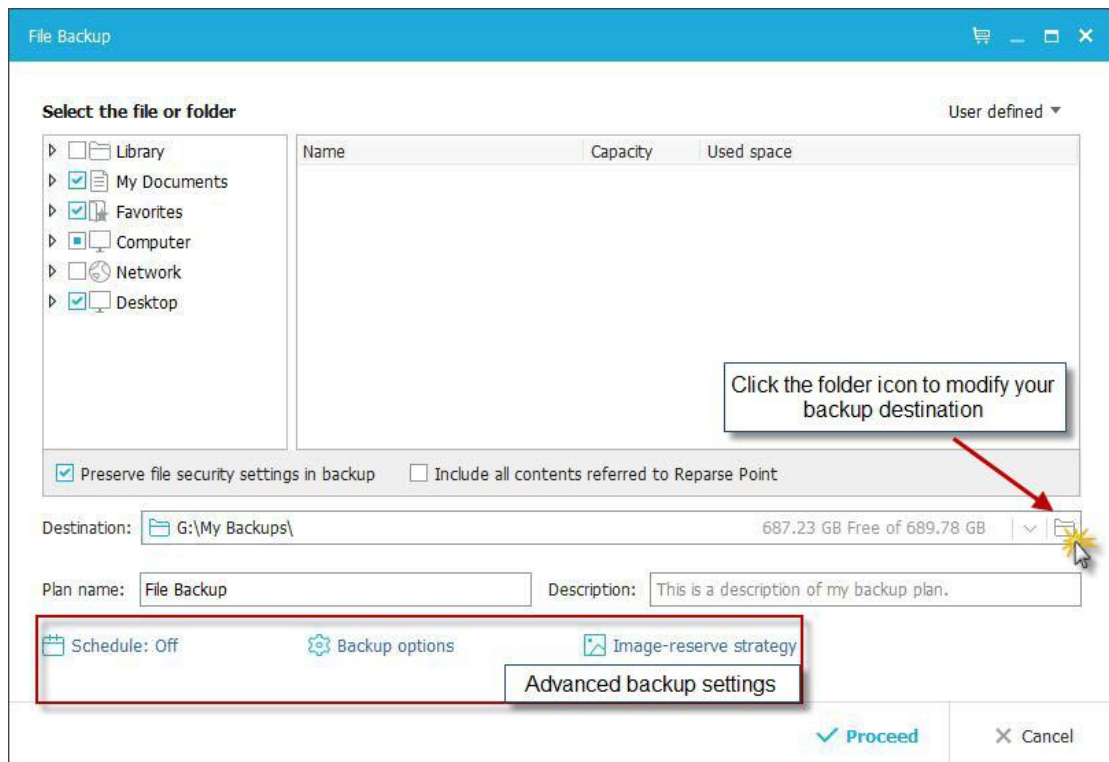
4. What is dynamic volume? Does EaseUS support its backup?

A: Dynamic volume is a part of a dynamic disk. Dynamic disk manages the volumes with a LDM (short for Logical Disk Manager) database. Compared with basic disk, dynamic one is divided into multiple types of volumes. Most dynamic volumes have advanced features in data storage, such as data redundancy in a Mirrored volume and fault-tolerant features in a RAID-5 volume.

Backup is supported. The backup process is the same as disk/partition backup on basic disk. One big difference lies in display. To be more precise, all the volumes on different disks are listed all together.

File Backup

You may have a large amount of vital data to be protected as time goes on, such as documents, pictures, musics and videos, etc. It is always a good habit to have a backup on regular basis. File Backup is one of the best choices for you to get over unexpected data loss.



Basic Settings:

Preserve file security settings in backup - The security attributes of NTFS encrypted files are reserved with **Preserve file security settings in backup** checked.

Include all contents referred to Reparse Point - All the Windows **Reparse Point** or link are included with **Include all contents referred to Reparse Point** checked. It may result in a huge image, so you not encouraged to check it.

Destination - Click the folder icon to modify your backup destination.

Plan name and **Description** - An accurate plan name and appropriate description will help you distinguish easily.

Advanced backup settings

Advanced backup settings are useful when you want to create a flexible and automatic backup plan. **Schedule** is to create an automatic backup plan. **Backup options** is to edit the advanced parameters. **Image-reserve strategy** is to reserve the limited image as per image retention rule.

For more details, please click:

[Schedule](#), [Backup option](#), [Image-reserve strategy](#).

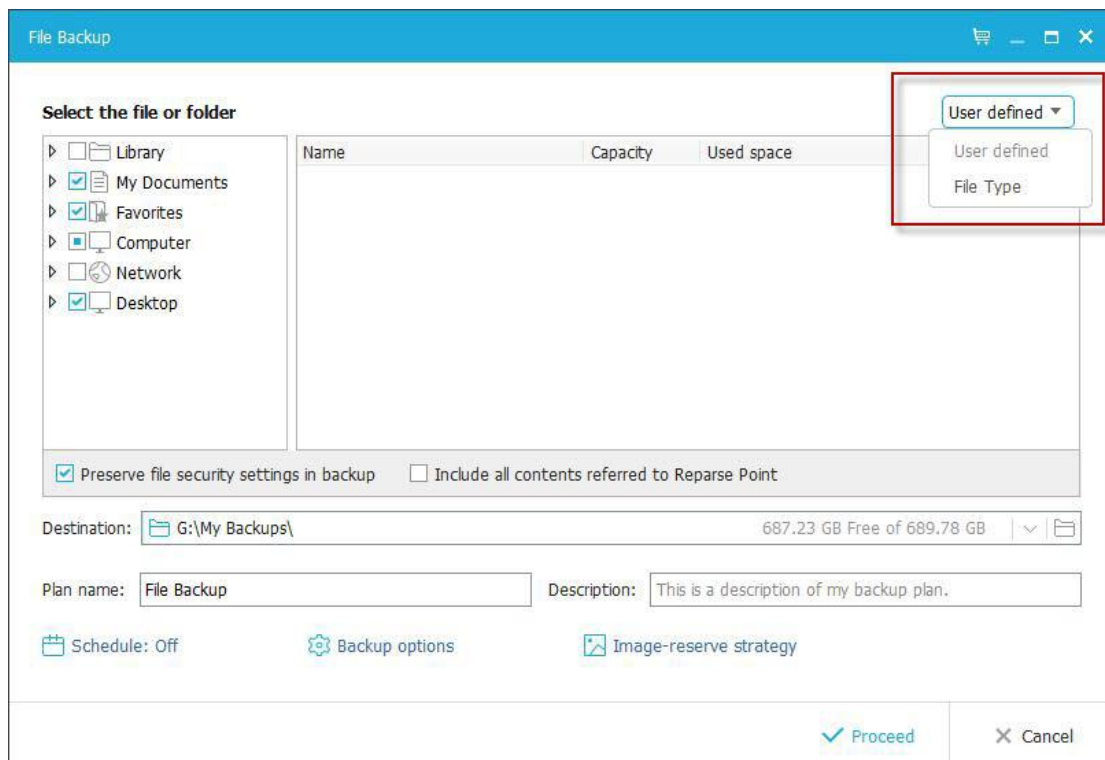
Tips:

Advanced backup settings are for reference only but not a prerequisite for backup.

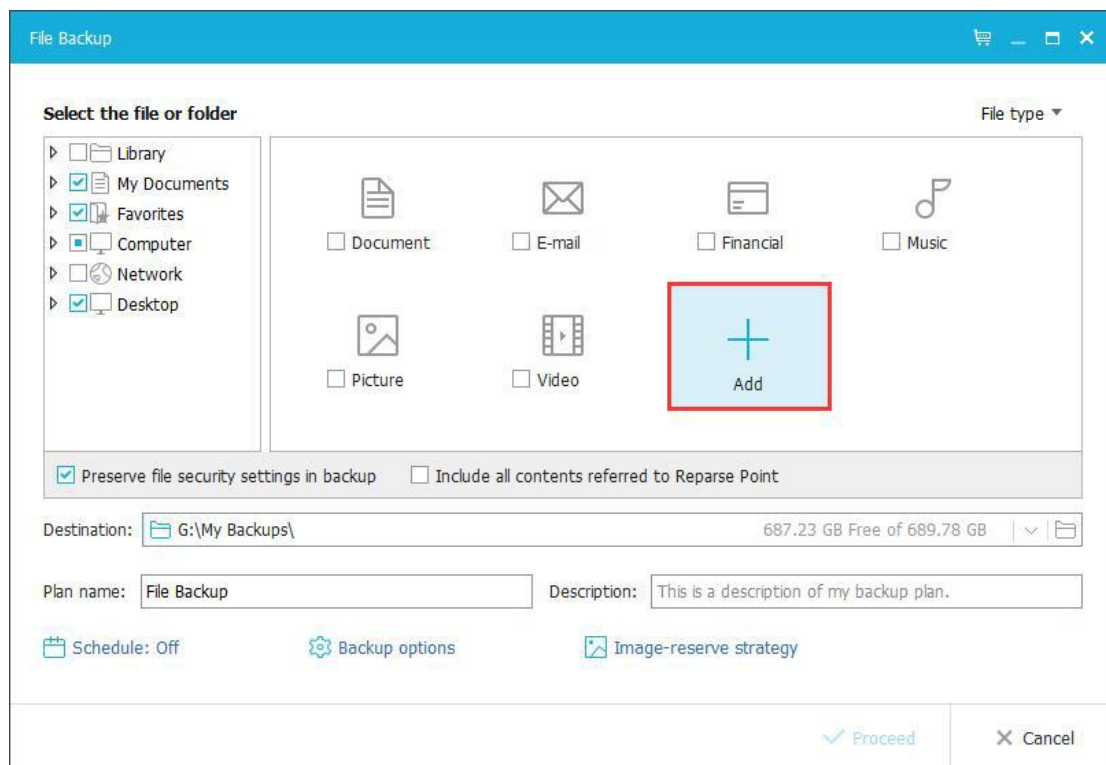
Only back up the selected file types

If you just want to backup one or some specific file types from one folder, the option at top right corner can help you exclude the others files.

Click **User defined** and press File type in the appeared drop-down menu.



Some commonly used file types have been preset and divided into 6 categories.



Select the file types you want to backup from default categories or click **Add** to create a new entry for your special file type(s).

Please don't forget you have to decide which folder you want to backup from the file tree on left panel.

The figure above means I want to backup all Documents on my desktop.

Smart Backup

Smart Backup is added in EaseUS Todo Backup starting from version 7.0. A scheduled backup is performed every half an hour provided any changes are made in Smart Backup.

Note:

Smart Backup does not support disk or partition backup.

Files/folders saved in network drive is not supported by Smart Backup.

When You Need Smart Backup

Cases:

1. To back up database files that are frequently changed;
2. To back up shared files that are frequently updated;and
3. Want to create multiple backup points for the recovery or rollback.

What You Get with Smart Backup

Before you move to what you are going to get with Smart Backup, you may need to have a knowledge of [the differences among full, incremental and differential](#) backup.

The first image of Smart Backup is always full. There will be a new full image created every seven days. The first images on each seventh days are Full.

The first image on rests days are differentials. The rest images on rest days are incrementals. There are no differentials on each seventh days as there are fulls already.

No backups created on invalid days. It is deemed to be an invalid day when your computer happens to be powered off or become nonfunctional.

How Smart Backup Manages Images

To avoid insufficient disk in destination, Smart Backup automatically deletes images as followed:

1. All the **Incrementals** created on yesterday will be deleted with the completion of today's first image.
2. As we have stated before, there should be 6 Differentials at most. So the last Differential will be deleted with the completion of next one. For example, Differential created on 2nd day will be deleted with the completion of Differential on 8th day.
3. Likewise, there should be 2 Fulls at most. In this case, you are limited to restore the images in the past 15 days.

Tips:

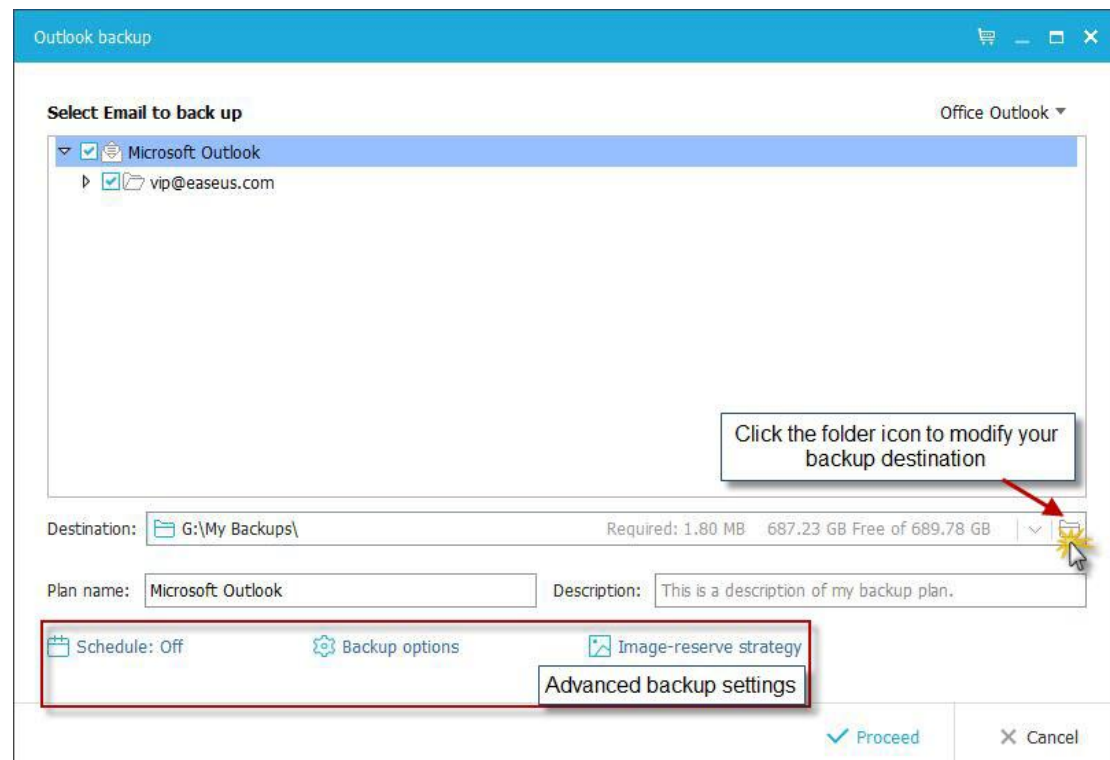
*Smart Backup supports to back up the folders/files by right click in Windows Explorer. Select **Create Smart Backup for selected file(s)** in Windows menu to start smart backup.*

Mail Backup

Communication via email is still a popular manner and Microsoft Outlook is the most popular email application. After a long time using, you may have many important mails to be backed up. Then EaseUS Todo Backup can also become your guardian to protect the mails.

Tips:

Windows live mail and Mozilla Thunderbird are not supported.



Specify contents for backup. You may choose to back up whole mailbox, individual folder(s), Contacts and Calendar, etc.

Basic Settings:

Destination - Click the folder icon to modify your backup destination.

Plan name and **Description** - An accurate plan name and appropriate description will help you distinguish easily.

Advanced backup settings

Advanced backup settings are useful when you want to create a flexible and automatic backup plan. **Schedule** is to create an automatic backup plan. **Backup options** is to edit the advanced parameters. **Image-reserve strategy** is to reserve the limited image as per image retention rule.

For more details, please click:

[Schedule](#), [Backup option](#), [Image-reserve strategy](#).

Tips:

Advanced backup settings are for reference only but not a prerequisite for backup.

Schedule Backup

Scheduled backup runs automatically in a regular time interval or at a specified time point.

Here you are going to have a brief idea on how to configure all the schedule settings and image retention rule.

Schedule Settings

Schedule time

EaseUS Todo Backup provides five **Schedule Types**.

The screenshot shows the 'Backup scheme' window. Under 'Schedule Type', 'Time' is selected, and a time field shows '0 : 00'. Below this, 'Daily' is selected under 'Schedule Type'. The 'Backup method' is 'Incremental backup'. There are checkboxes for 'Appoint daily first backup as Full backup', 'Wake the computer to run this backup', and 'Run missed backup at system startup if computer is shutdown'. The 'Windows login user' is 'Jason' and the 'Password' field is empty. 'Save' and 'Cancel' buttons are at the bottom right.

One-time backup

Set a specific time point to execute the backup once.

Daily

The backup is to be automatically executed at the scheduled time every time, which may be either at specific time point(s) or by time interval.

Time- Execute the plan at specific time point(s). Click to add new time points. Five time points are limited within one day. To remove time point, please click .

Interval - Set start time, finish time and interval time for the plan.

Suppose start time is at 6:00 am and finish time at 10:00 am with 2-hour interval time. Backups will be executed for three time at different time points, 6:00 am, 8:00 am and 10:00 am.

Weekly

The backup is to be automatically executed at the scheduled time every week.

Monthly

The backup is to be automatically executed at the scheduled time every month, which may be based on date or week. An exact time point on the exact day(s) to execute the backup is required.

Every - Schedule the time by week. You may choose first, second, third, fourth or last week of each month to execute the backup.

Start - Schedule the time by date. You may choose any exact day(s) to execute the backup in each month.

Upon event

The backup is to be automatically executed in the event of:

System startup - Backup runs automatically when system starts up.

System shutdown - Backup runs automatically when system is shutdown.

User log on - Backup runs automatically when Windows logs in.

User log off - Backup runs automatically when Windows logs off.

USB device plugged in - Backup runs automatically when USB device is plugged in provided that it is set to be the destination.

Once a day only

The event backup will be executed once a day only in any cases with **Once a day only** checked.

Specified date

The event backup will be executed on the exact date checked only. The event backup is to be executed everyday with **Specified date** unchecked.

Run missed backup at system startup if computer is shutdown

The latest missed backup will be automatically executed at the startup of Windows in the case that your computer happens to be shutdown or power failure in **Daily**, **Weekly** or **Monthly** scheduled backup.

Note:

*Exchange backup does not support **Upon event**.*

Backup method

There are three backup methods, **Full**, **Incremental** and **Differential**.

Backup scheme

Schedule Type:

- ☐ One-time backup
- ☐ Daily
- ☒ Weekly
- ☐ Monthly
- ☐ Upon event

Time setting: 12:00 (H:mm)

Sun Mon Tue Wed Thu Fri Sat

Backup method: Incremental backup

- ☐ Appoint weekly backup
- ☒ Wake the computer at the backup time
- ☒ Run missed backup at system startup if computer is shutdown

Windows login user: Jason Password:

Save Cancel

Here are more options for you with **Appoint [daily/weekly/monthly] first backup as full** or differential when incremental or differential backup method is checked.

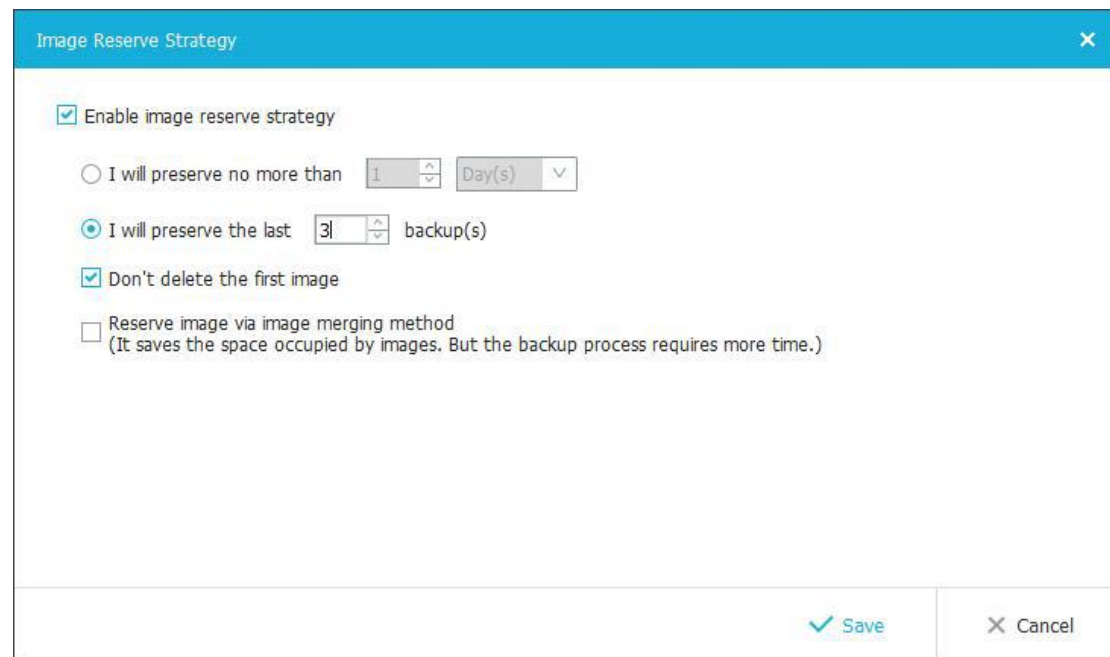
You may get a knowledge of [differences among Full, Differential and Incremental](#) here.

Note:

To set scheduled backup, an account with administrator privileges is highly recommended.

Image Reserve Strategy

Destination storage is to be out of space soon or later without **Image Reserve Strategy**. Here is how it works in image retention rule to save storage space.



Images are be deleted on the basis of period, numbers, week, month and year. For more details, please click [here](#).

Don't delete the first image

First full image will neither be deleted nor be counted into preserved images as per image retention rule with **Don't delete the first image** checked.

Reserve image via image merging method

Images are to be intelligently merged with **Reserve image via image merging method** checked. For more details, please click [here](#).

Created Backup Edit

All the options stated below are editable for any created backups, including Recovery, Backup and Advanced.

Recovery

To click Recovery is to restore the backup. For more details, please click [Recovery](#).

Backup

To click Backup is to manually run a **Full**, **Incremental** or **Differential** backup, which will not affect the subsequent scheduled backups.

Advanced

Edit plan - To click Edit plan is to update the created backup.

Image manager - To click Image Manager is to manually delete or merge the created images.

Check image - Fore more information, please refer to [Check image](#).

Delete backup - To delete backup task only with **Delete related images** unchecked.

P2V conversion - To convert data to a virtual disk file in order to be available for VMware Workstation or MS Virtual PC. For more information, please refer to [here](#).

P2V recovery - To convert system to a virtual disk file in order to be available for VMware Workstation or MS Virtual PC. For more information, please refer to [here](#).

Backup Options

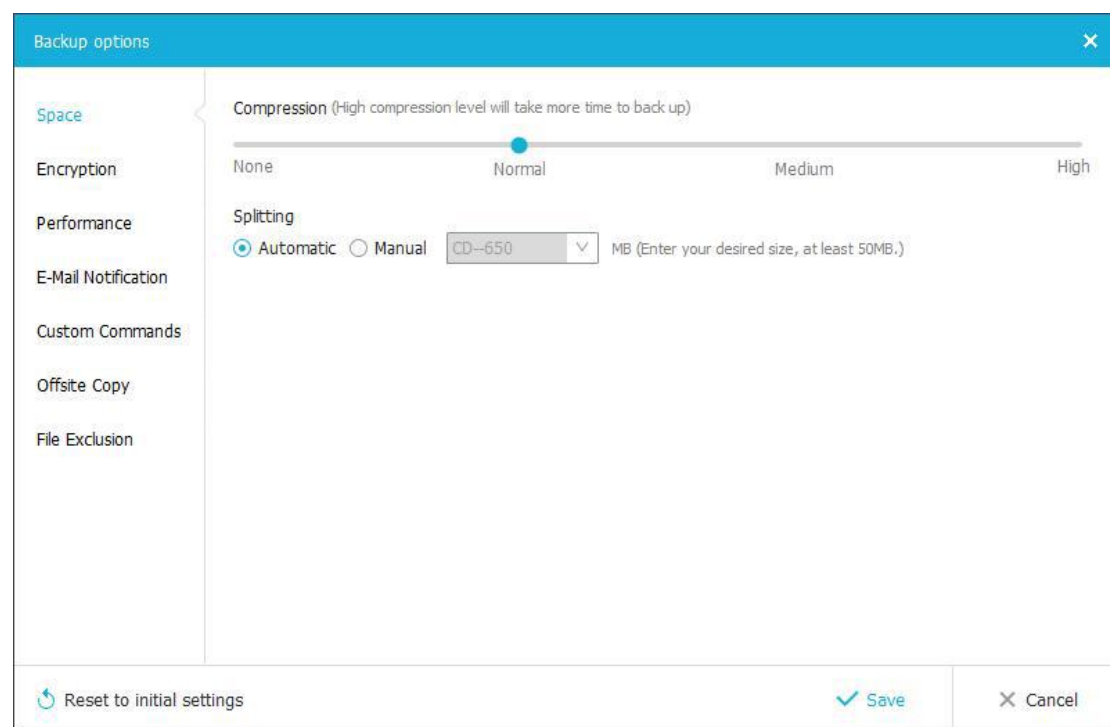
Backup Options is available for both created backups and newly created ones.

Space

Space includes Compression and Splitting.

Compression

A backup file can be compressed. Drag the arrows to determine the compression level. In most cases, images with **High** compression is in a smaller size than the ones with **None** or **Normal** compression.



Tips:

*Backup with **High** compression level is not supposed to generate a small image. The reason is some files that have been compressed won't be repeatedly compressed any more, such as .jpg, .pdf and .mp3, etc.*

Splitting

To accommodate different storage medium, images require to be split into small pieces with Backup Splitting.

Automatic - Image size is automatically split by file system type of destination storage device with Automatic checked.

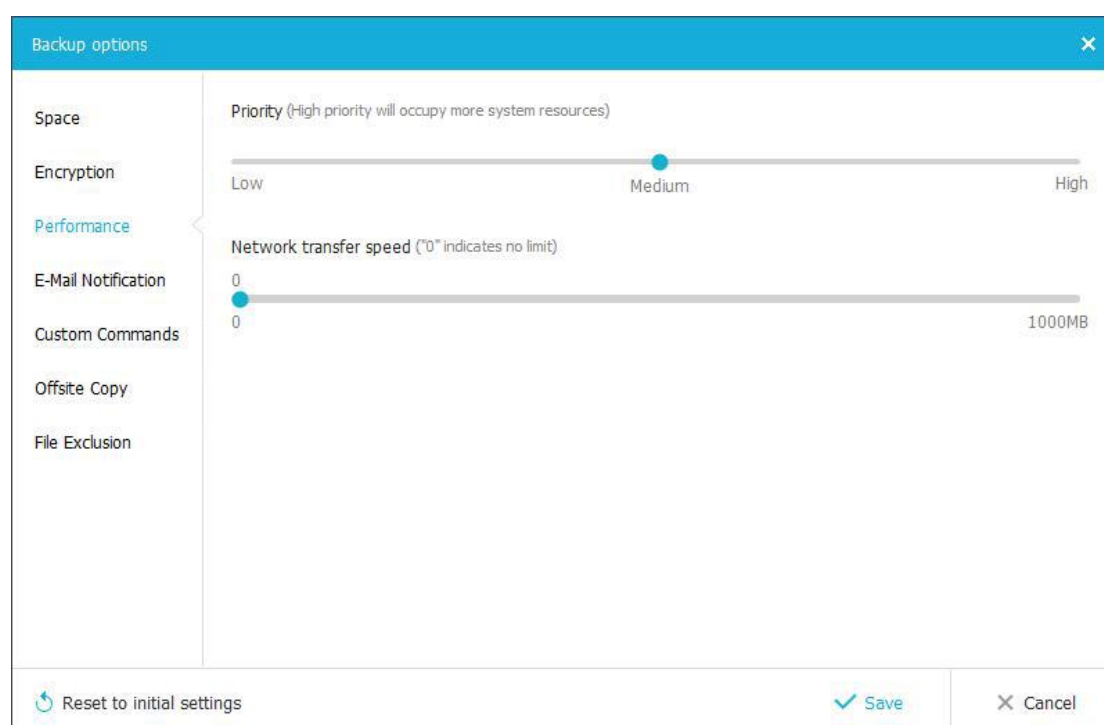
Manual - Image size is manually split with Manual checked, which requires a minimum size of 50MB.

Encryption

To protect images with password, please check **Enable Backup Encryption**. The password adopts AES256 algorithm, which should be less than 15 characters.

Make sure the password is properly saved. EaseUS is unable to get encrypted images decrypted.

Performance



Priority

Windows is a multitasking operating system that supports simultaneous running of multiple applications. Backup runs faster with **Priority** checked.

Network transfer speed

It is 0 Mbps by default. In this case, EaseUS Todo Backup is unlimited to utilize the network and disk I/O resource.

E-mail Notification

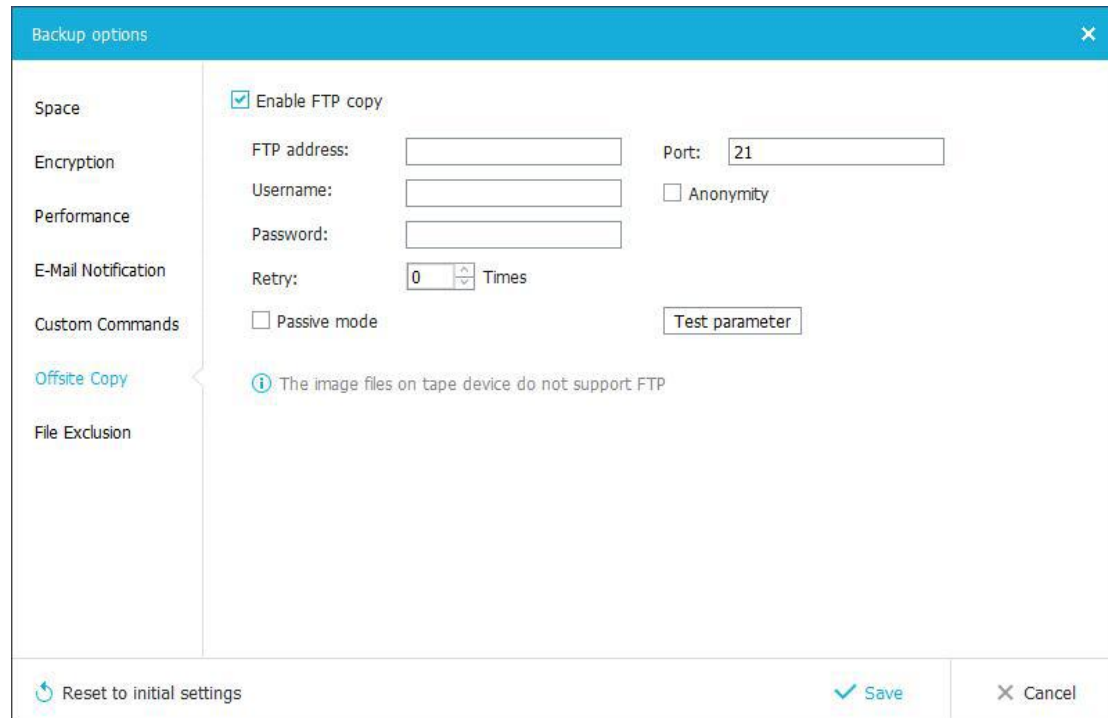
You may monitor backup status with Logs and E-mail notification. Here is how to set an email notification. For more details, please click [here](#).

Custom Commands

You may set any commands to be executed before or after a backup plan. For more details, please click [here](#).

Offsite copy

To better protect images, you may set offsite copy. Images will be automatically duplicated to FTP with the completion of backup.



The screenshot shows the 'Backup options' dialog box with the 'Offsite Copy' tab selected. The 'Enable FTP copy' checkbox is checked. The 'FTP address' field is empty, and the 'Port' is set to 21. The 'Username' and 'Password' fields are also empty. The 'Anonymity' checkbox is unchecked. The 'Retry' is set to 0 times. The 'Passive mode' checkbox is unchecked. There is a 'Test parameter' button. A message at the bottom states: 'The image files on tape device do not support FTP'. At the bottom of the dialog are buttons for 'Reset to initial settings', 'Save', and 'Cancel'.

Basic settings:

FTP address - Specify the FTP address with subdirectory included .

Port - Specify a port number for the FTP connection.

Username and **Password**- Input the username and password to log in the FTP.

Note:

Check **Anonymity** when there is no FTP password or user name or FTP is accessible to everyone.

Additional settings:

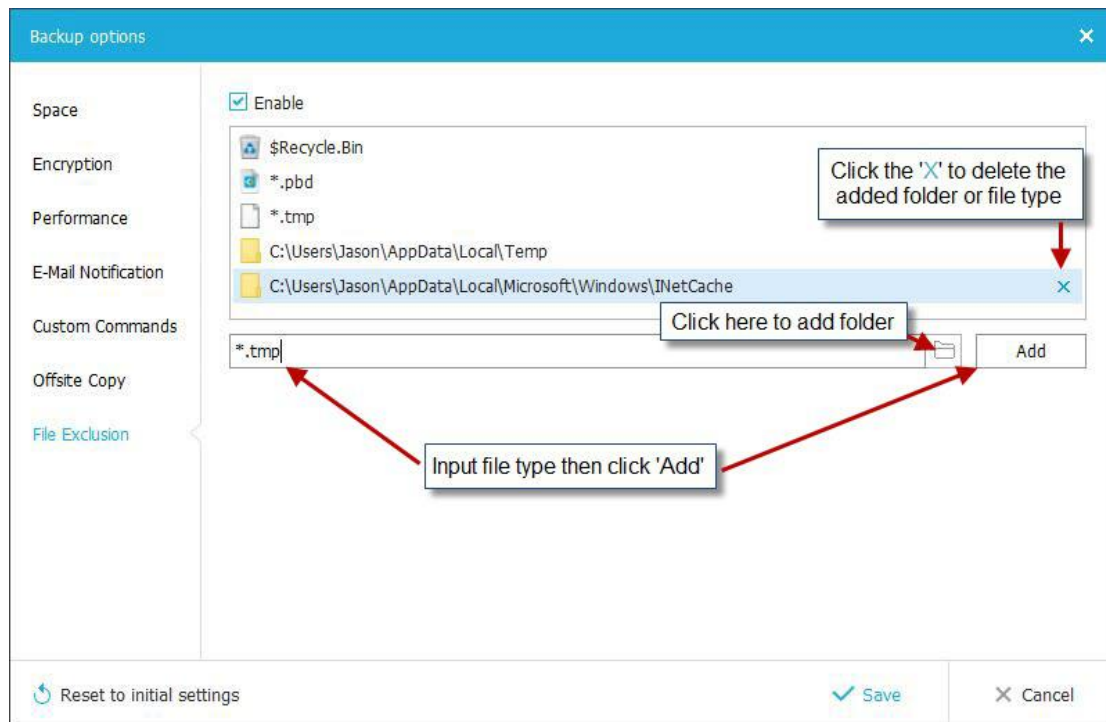
Retry- Set the retry times. EaseUS Todo Backup automatically retries to connect to the server as many times as it is specified in case of FTP connection failure.

Passive mode - FTP has two working modes, **PORT** and **PASV**. The default mode is PORT.

Test connection- Test parameters for FTP to make sure FTP is accessible before backup.

File Exclusion

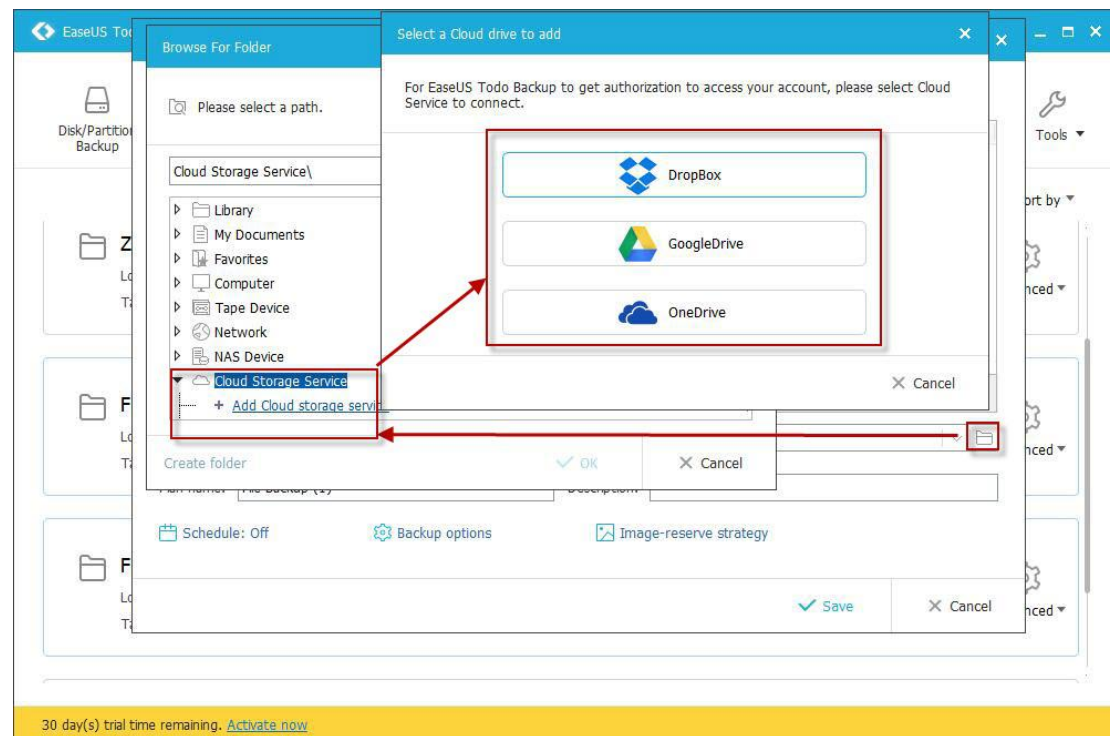
This feature can exclude the added file types and folders to avoid backing up unnecessary files.



Click the folder icon to add folder or input file type then click "Add" to add file type. Click "X" to delete the added file type or folder.

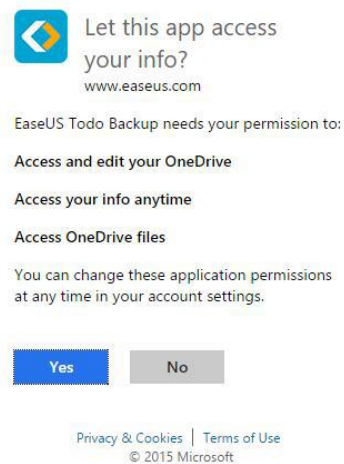
Cloud backup

Cloud backup supports **File backup**, **Smart backup**, **Mail backup** and **Exchange backup** only. Supported Cloud Storage includes **OneDrive**, **DropBox** and **GoogleDrive**.



Cloud storage requires to be authorized via web page. Here it is illustrated with OneDrive:

Microsoft Corporation [US] https://account.live.com/Consent/Update?ru=https://login.live.com/oauth20_authorize.srf%3flic%3d1033%26client

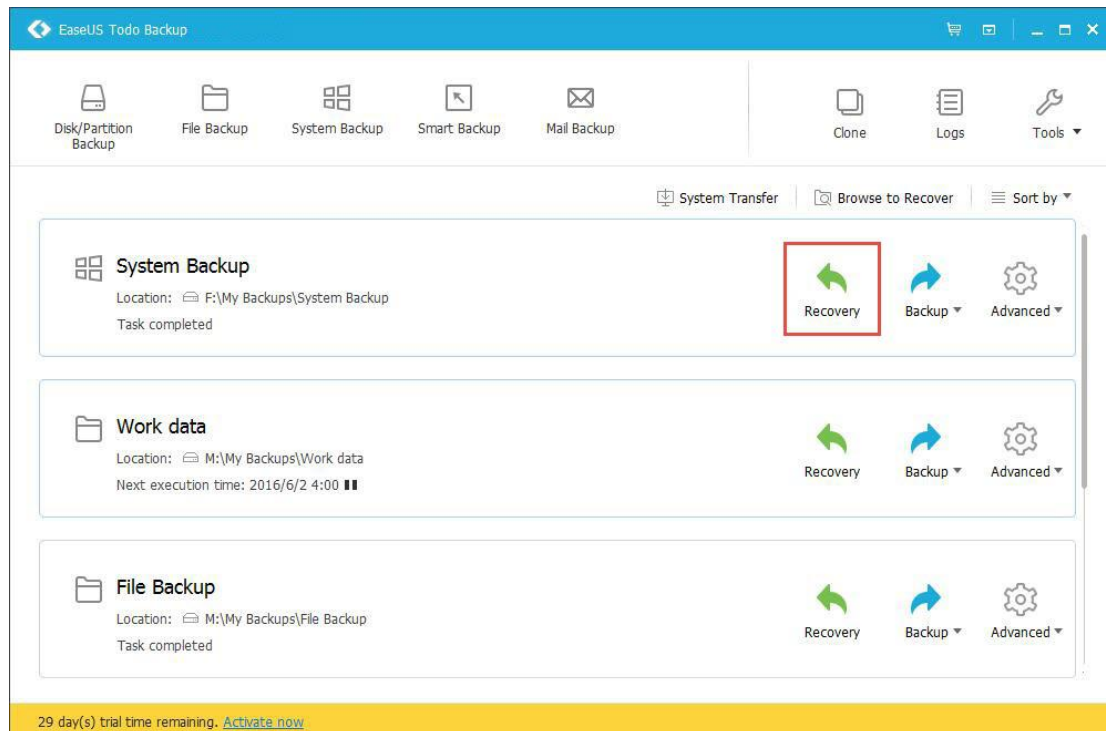


Recovery

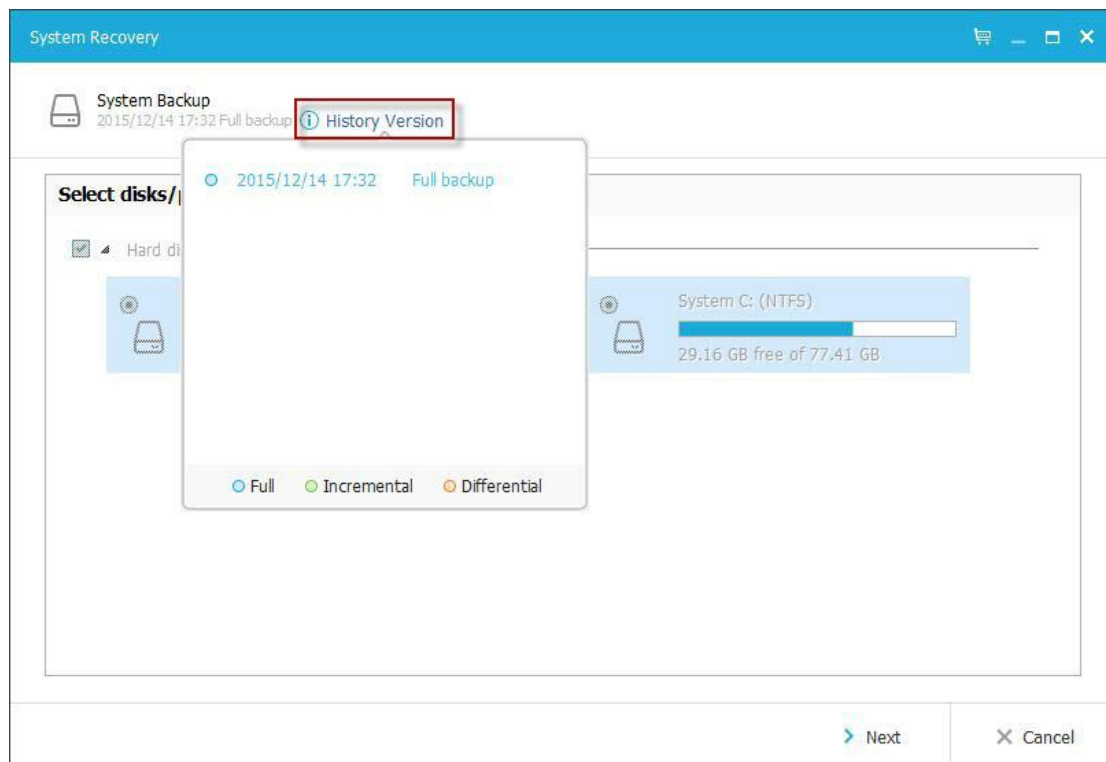
This feature is the reverse process of a backup. It will expand the files compressed in the backup image and restore files to the time point when the image file was created. With a simple recovery process, you can rescue the computer from a variety of disasters, such as virus infection, system crashes, partition failure and data loss.

System Recovery

A System Backup plan has **Recovery**, **Backup** and **Advanced** buttons. Directly click the **Recovery** button to restore the backup you created before.



Choose one **History version** of backup image, after confirming the contents, click **Next** button and select target location to restore.

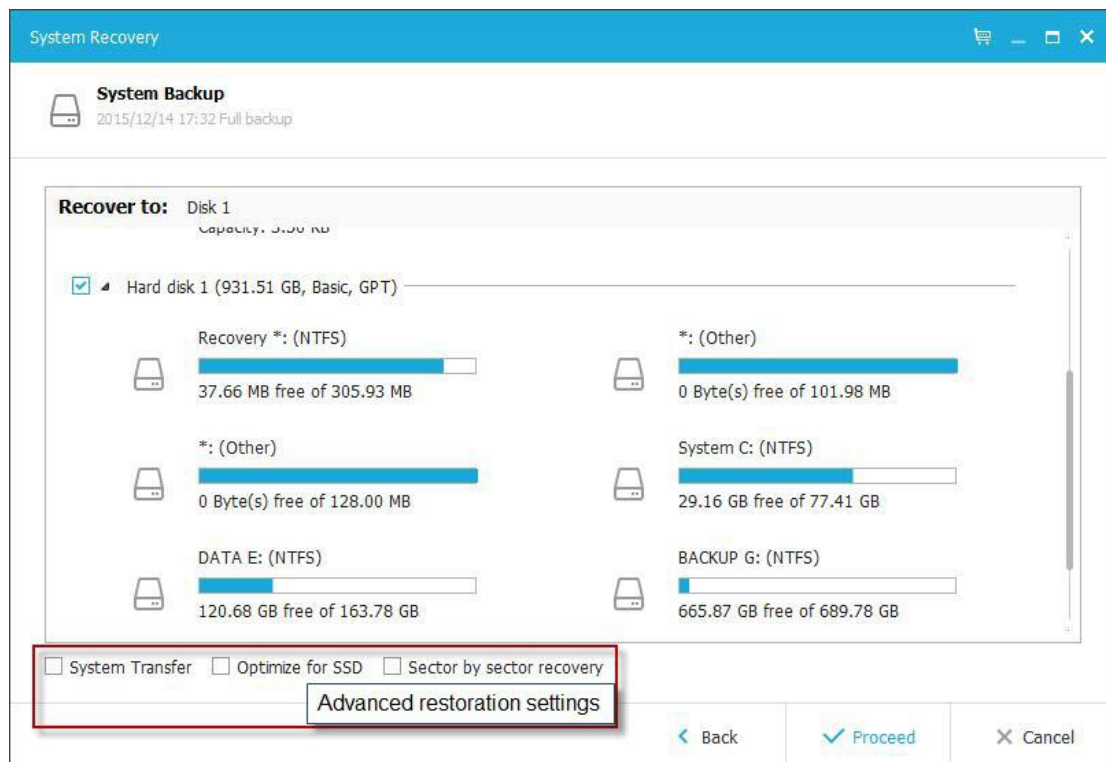
**Attention:**

The original system will be overwritten once the recovery starts.

A [WinPE bootable disk](#) or [Pre-OS](#) is required for recovery in the case of OS failure.

Advanced restoration settings

These advanced settings can help you restore the backups more stably and smoothly in some special case. However, without these advanced settings, EaseUS Todo backup can still give you a full restoration.



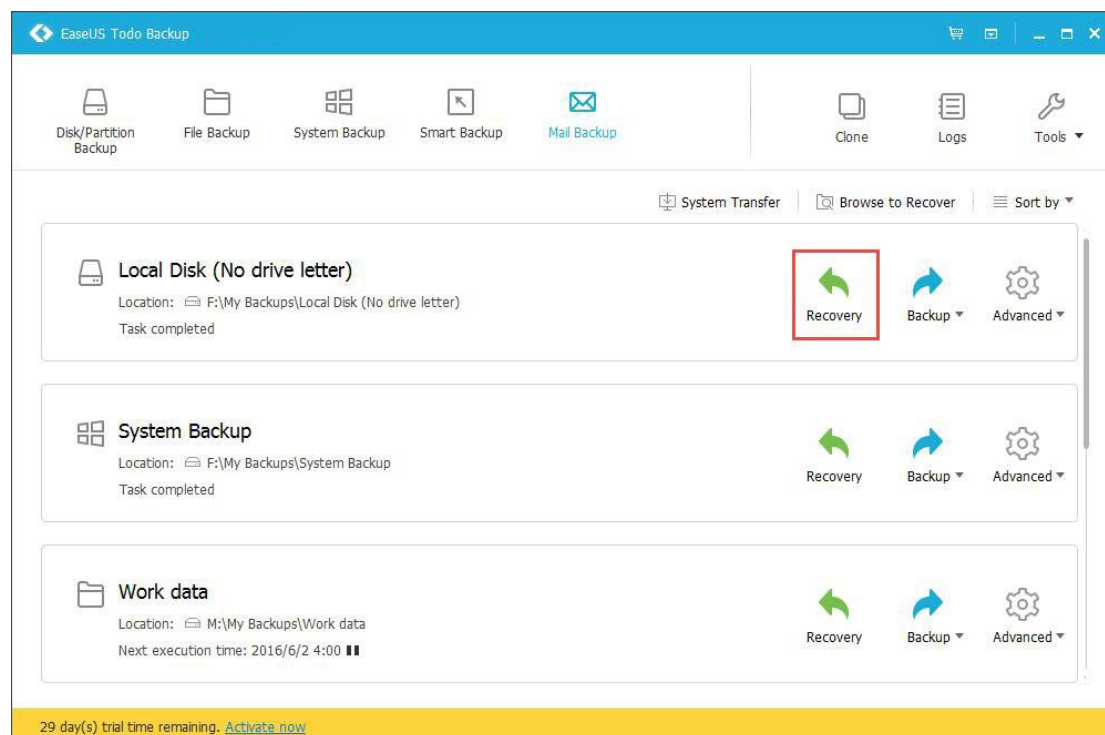
System Transfer - Restore the image which contains windows system to dissimilar computer, for details please click [here](#).

Optimize for SSD - If the destination disk is SSD, check this option will ensure sector alignment in the process.

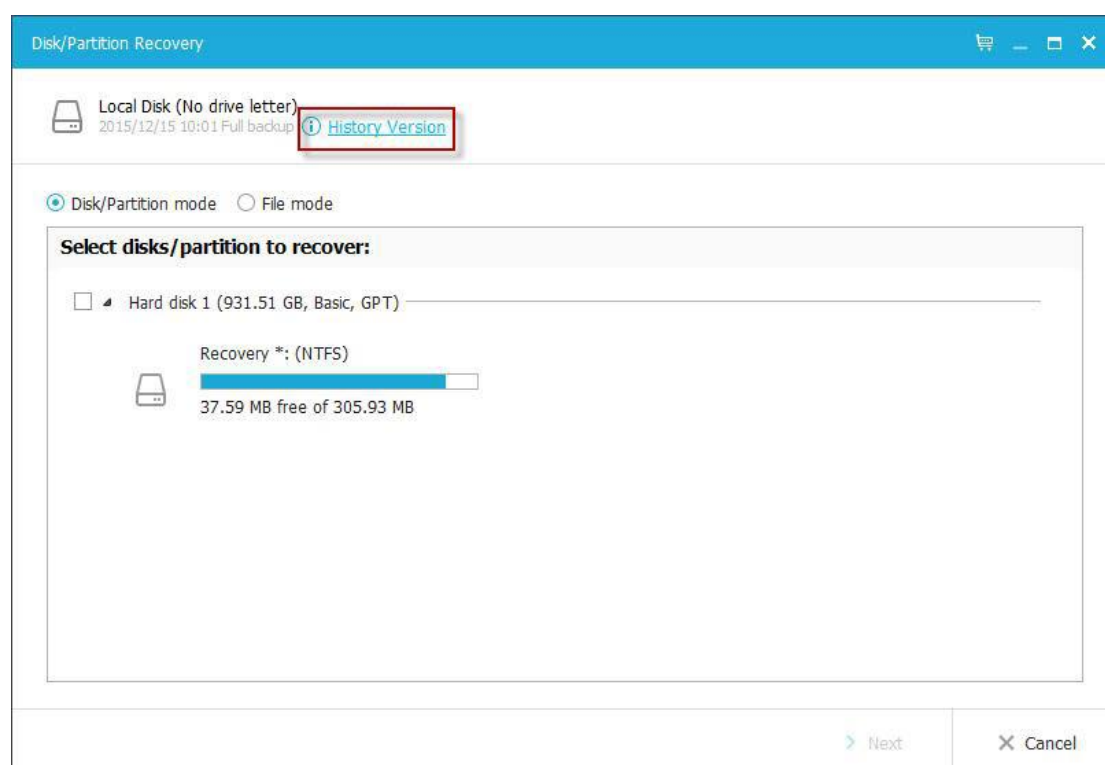
Sector by Sector recovery - Checking this option will recover the contents from an image file sector by sector. It ensures that the recovery process finishes successfully even if there are some logic errors on the original partition or hard disk. If you want every file distributed to its original sector after recovery, checking this option will meet that goal.

Disk/Partition Recovery

A Disk/Partition Backup plan has **Recovery**, **Backup** and **Advanced** buttons. Directly click the **Recovery** button to restore the backup you created before.



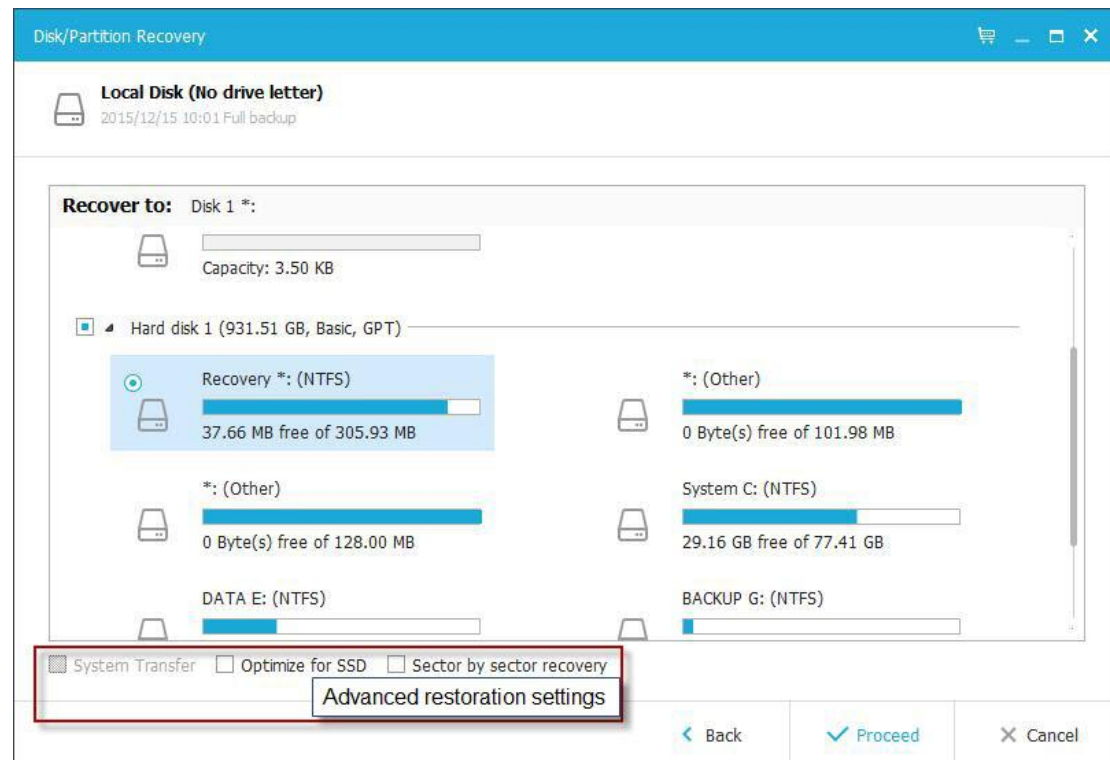
Choose one **History version** of backup image, after confirming the contents, click **Next** button and select target location to restore.

**Note:**

when you proceed a Disk/Partition recovery, the data on destination drive will be overwritten, please be careful that selecting the correct drive to restore.

Advanced restoration settings

These advanced settings can help you restore the backups more stably and smoothly in some special case. However, without these advanced settings, EaseUS Todo backup can still give you a full restoration.



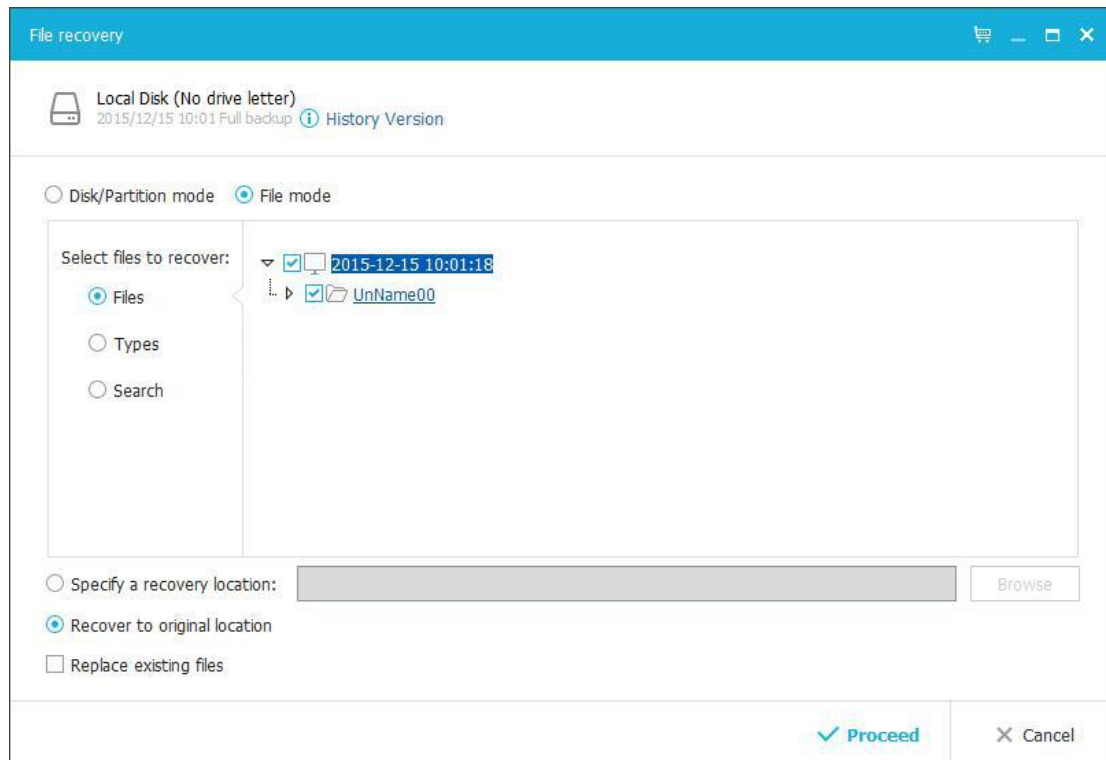
System Transfer - Restore the image which contains windows system to dissimilar computer, for details please click [here](#).

Optimize for SSD - If the destination disk is SSD, check this option will ensure sector alignment in the process.

Sector by Sector recovery - Checking this option will recover the contents from an image file sector by sector. It ensures that the recovery process finishes successfully even if there are some logic errors on the original partition or hard disk. If you want every file distributed to its original sector after recovery, checking this option will meet that goal.

Disk/Partition mode and File mode

The two options are available for System and File Disk/Partition backup image. You can restore individual files from the disk/partition image flexibly.



Disk/Partition mode

Restore the entire disk/partition image.

File mode

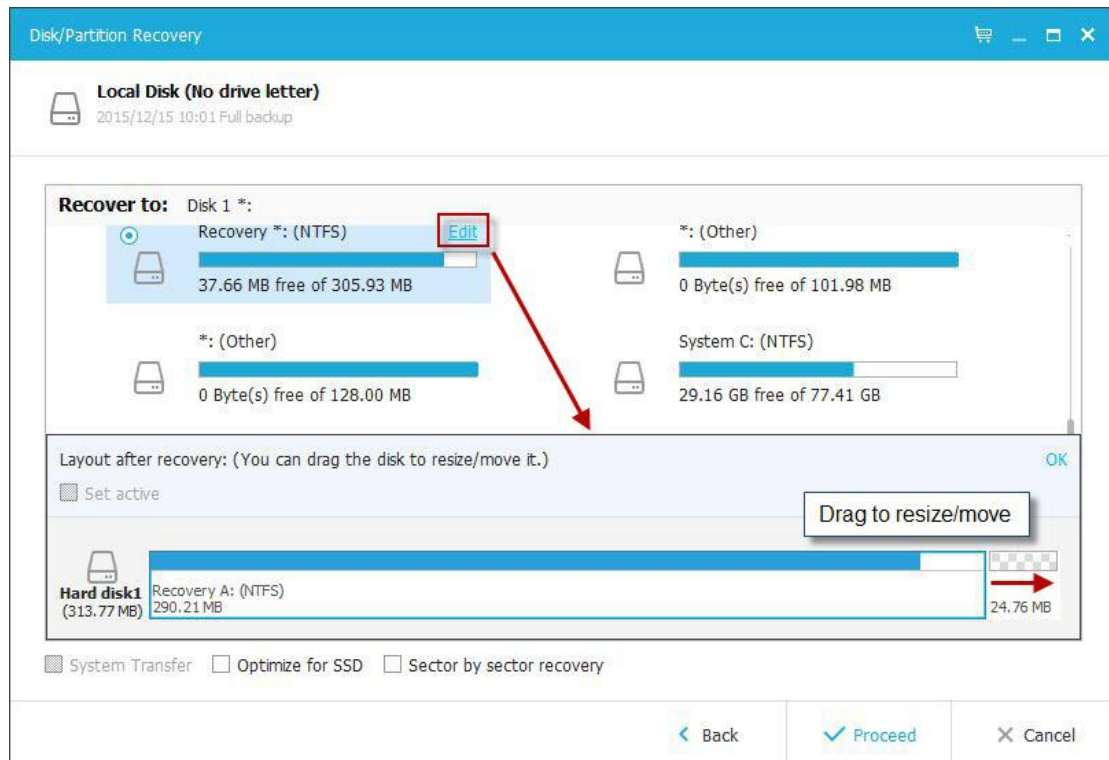
Recover individual file/folder(s) from Disk/Partition backup image.

Specify a recovery location - The selected files or folders will be recovered to a specified location.

Recover to original location - The files or folders will be recovered to their original location.

Decide the partition size after recovery

If the size of destination disk is different from the source one, then EaseUS Todo Backup will automatically resize the partitions before restoration starts, or you can edit the size by yourself.



1. Select the destination disk and click **Edit** button.
2. Once the disk structure is displaying. Drag the partition to determine the size after restoration Then click **Proceed** to restore.

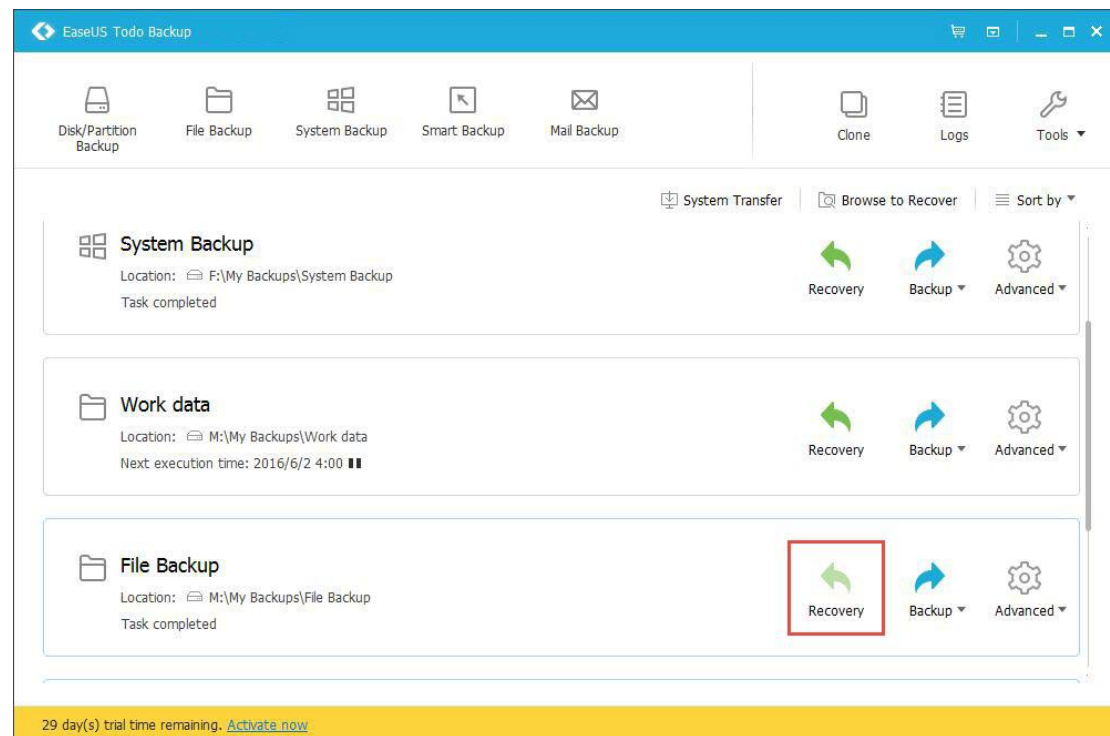
Dynamic volume recovery

Dynamic volume recovery is similar to partition recovery on basic disk.

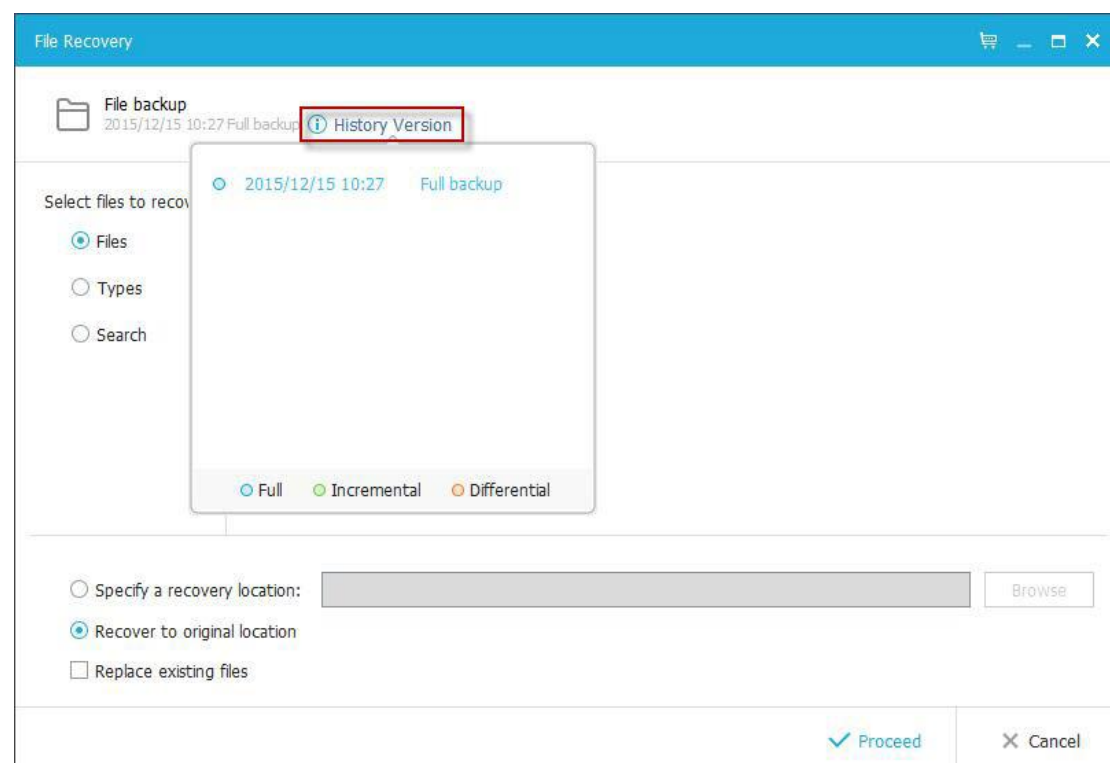
As a kindly reminder, dynamic volume with operating system will be a primary partition after being recovered to a basic disk.

File Recovery

A File Backup plan has **Recovery**, **Backup** and **Advanced** buttons. Directly click the **Recovery** button to restore the backup you created before.



Choose one **History version** of backup image, after confirming the contents, click **Next** button and select target location to restore.



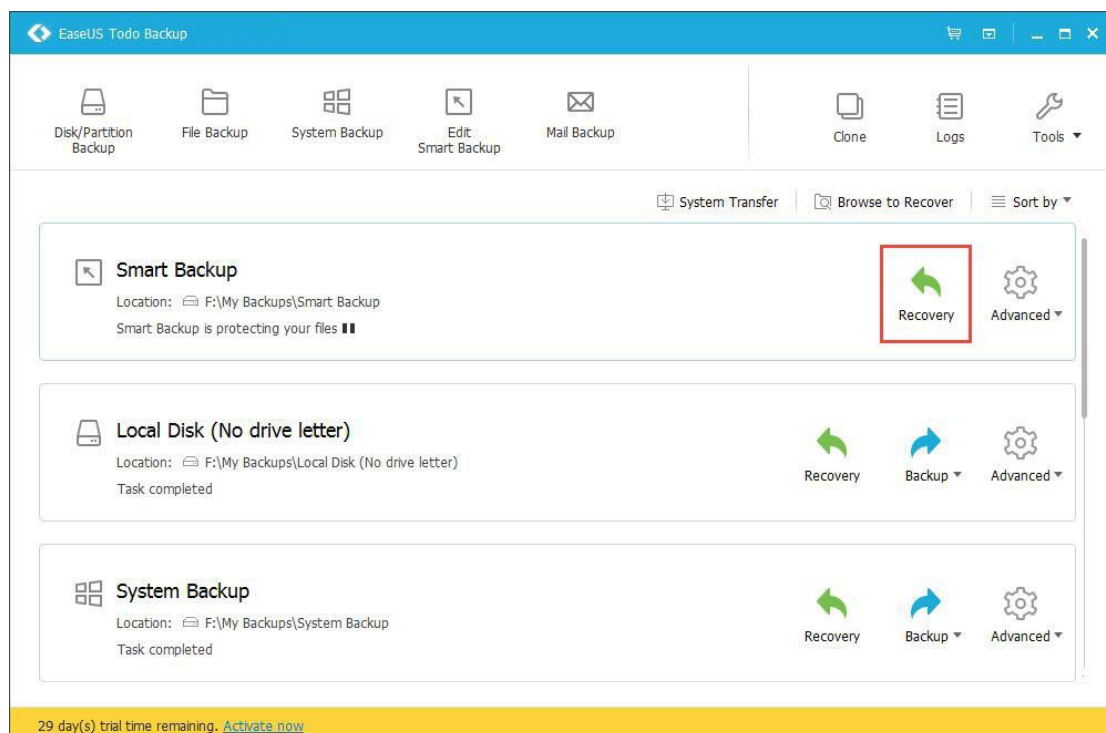
1. Indicate the files to recover. You can specify the files to recover with three modes: **Files**, **Types** and **Search**.

2. Recover the files and folders to original or a different location.

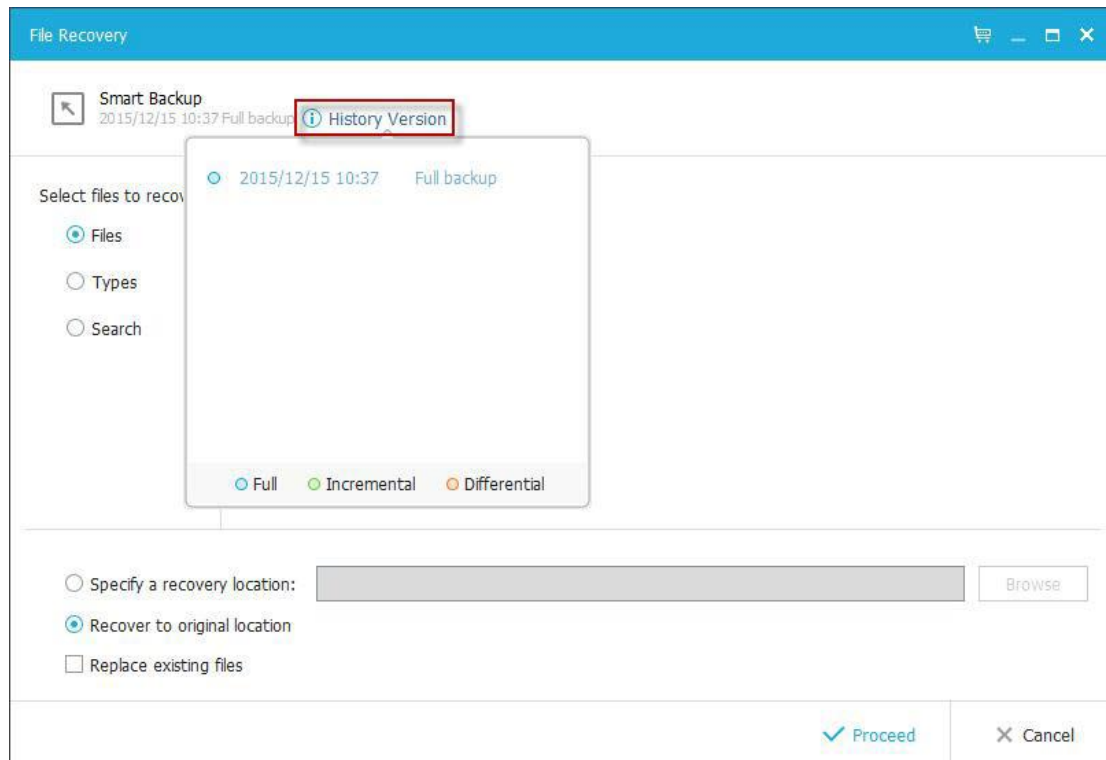
Replace existing files - After checking this option, the original files and folders will be overwritten after recovery.

Smart Recovery

A Smart Backup plan has **Recovery** and **Advanced** buttons. Directly click the **Recovery** button to restore the backup you created before.



Choose one **History version** of backup image, after confirming the contents, click **Next** button and select target location to restore.

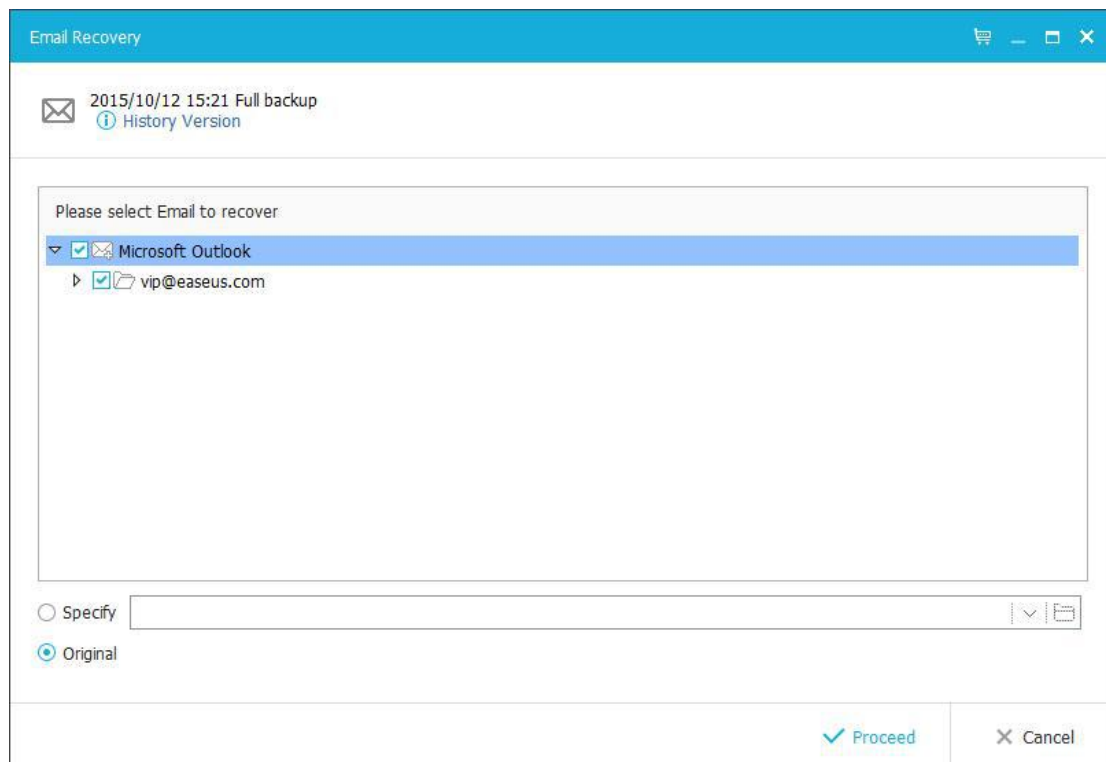


Recovery for Smart Backup is similar to [File recovery](#).

Mail Recovery

A Mail Backup plan has **Recovery**, **Backup** and **Advanced** buttons. Directly click the **Recovery** button to restore the backup you created before.

Choose one **History version** of backup image. Indicate the mailbox/folder/file(s) you want to recover to.



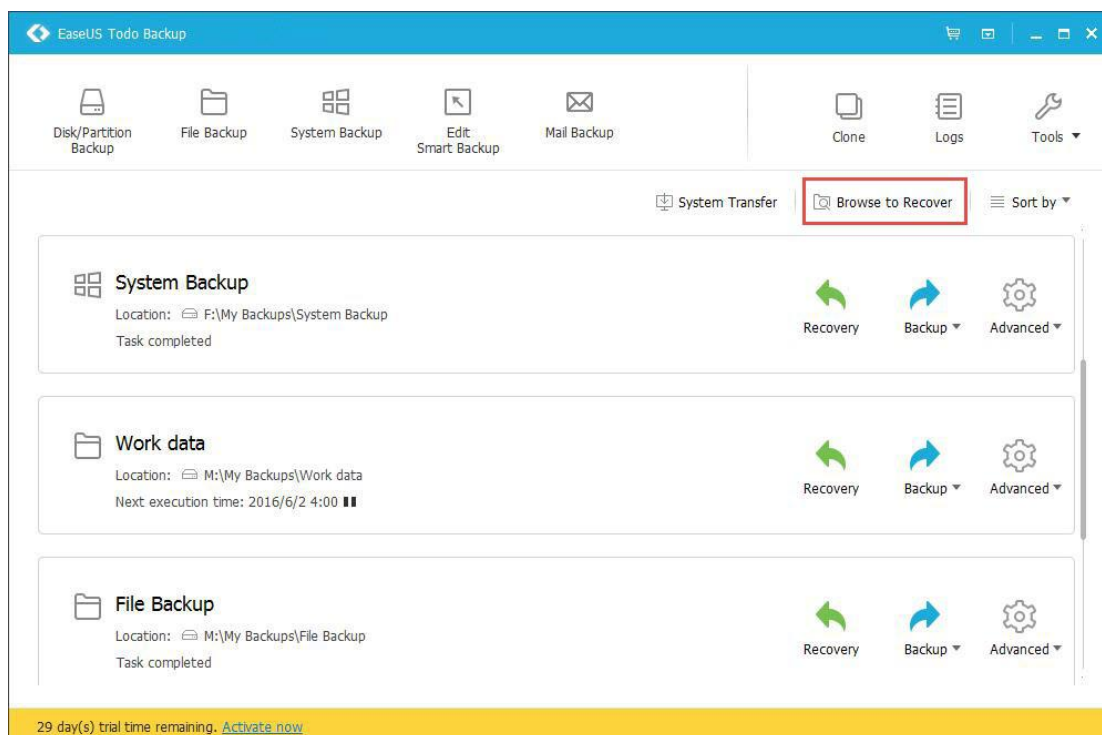
After confirming the contents, click **Next** button and select target location to restore.

Note:

The existing emails/contacts will not be overwritten. In another word, it is a filling-up restore in the process of mail recovery.

Browse to Recover

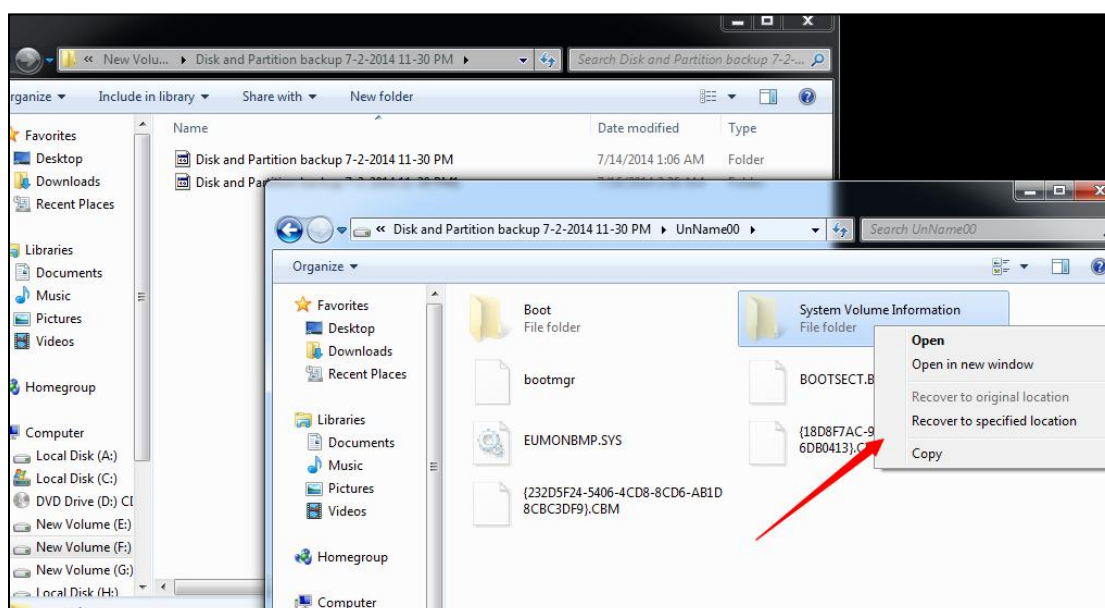
Sometimes, If the backup plans lost due to re-install EaseUS Todo Backup, and you cannot find the plan record in Home page. Or you try to restore under WinPE emergency disk. Then the **Browse to recover** option is necessary.



Click this button to locate your image file manually from Windows directory tree for restoration.

Individual File Recover

EaseUS image files can be directly accessed. You can double click on the .PBD image file or right click it and choose open to browse it. Find the target file, right click it to display the menu, and then **open**, **copy** and **recover** specified files in the image.



System Transfer

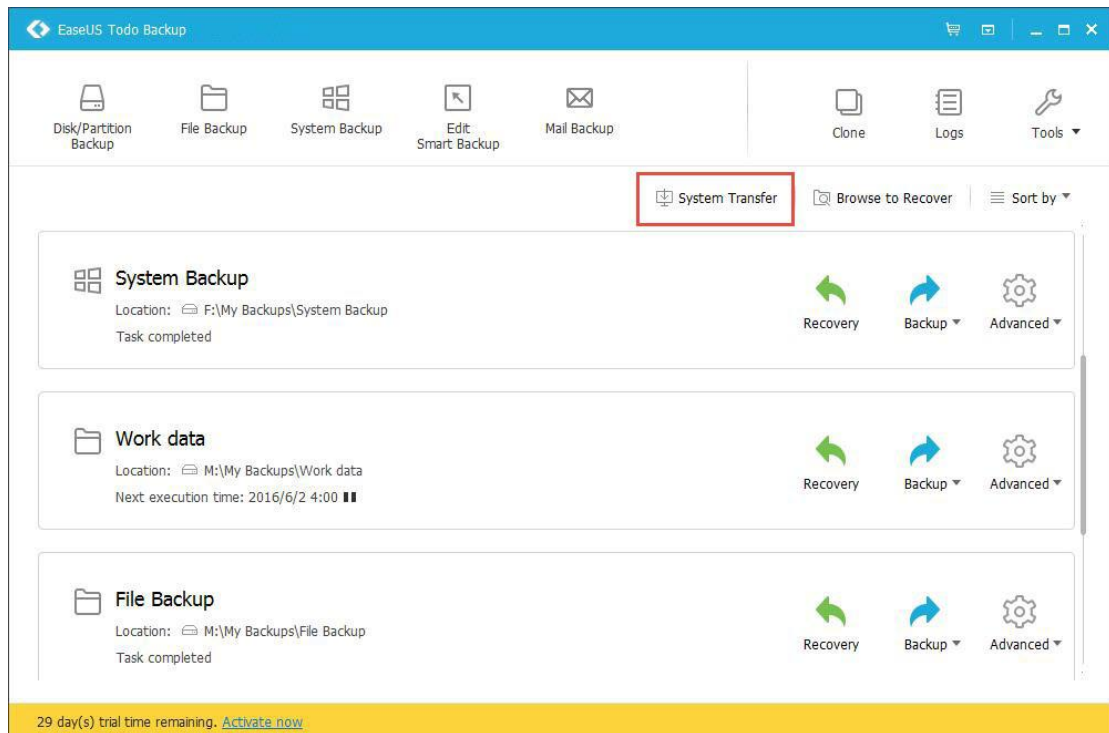
Since most hardware requires corresponding driver installed to be functional, users cannot simply move system to a new machine with different hardware configuration and expect the system to run as original due to lack of necessary hardware driver.

EaseUS Todo Backup provides **System Transfer** feature which can help users solve the trouble easily. The most common situations this option can handle are:

1. Migrate system to a new and more powerful PC.
2. Restore and keep old system available after some hardware upgraded.

Note:

System Transfer is only available for Home and higher editions.



Preliminary

Essential preparations before the recovery include:

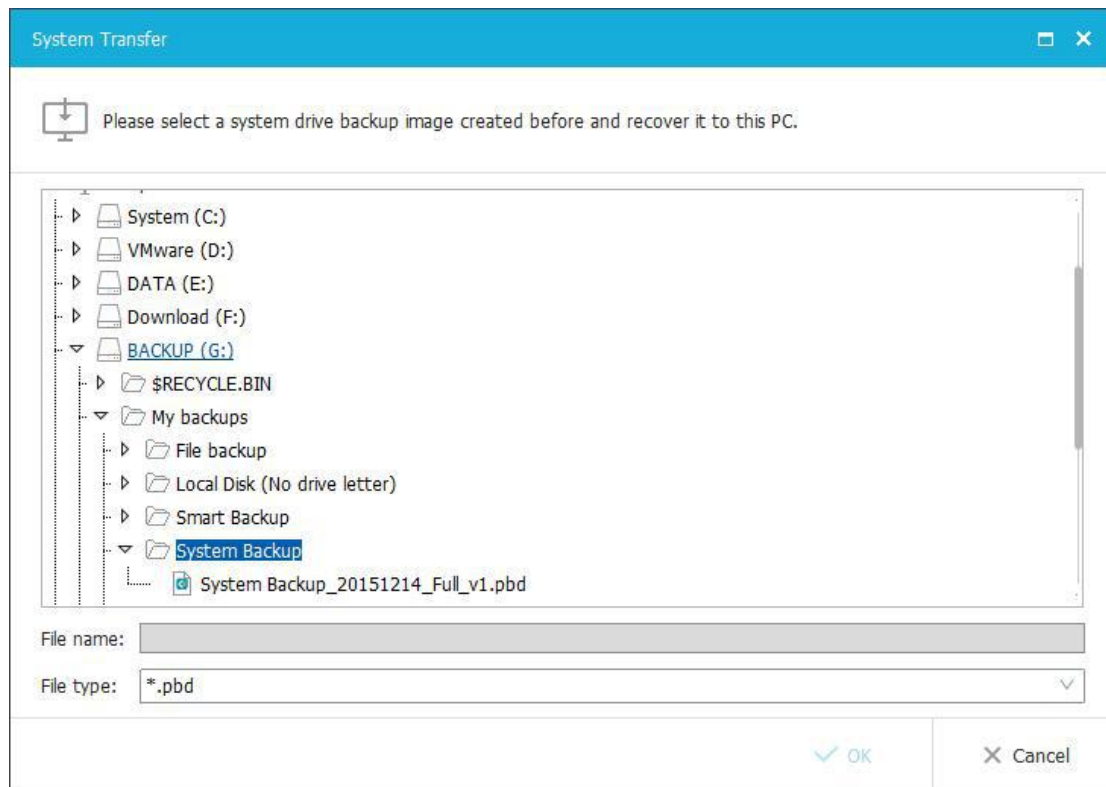
1. A valid system image file created with **System backup** or **Disk/partition backup** option.
2. A proper **WinPE emergency disk/USB** which can be loaded on target machine correctly.
3. The inf driver file of the new hardware on target machine.

Note:

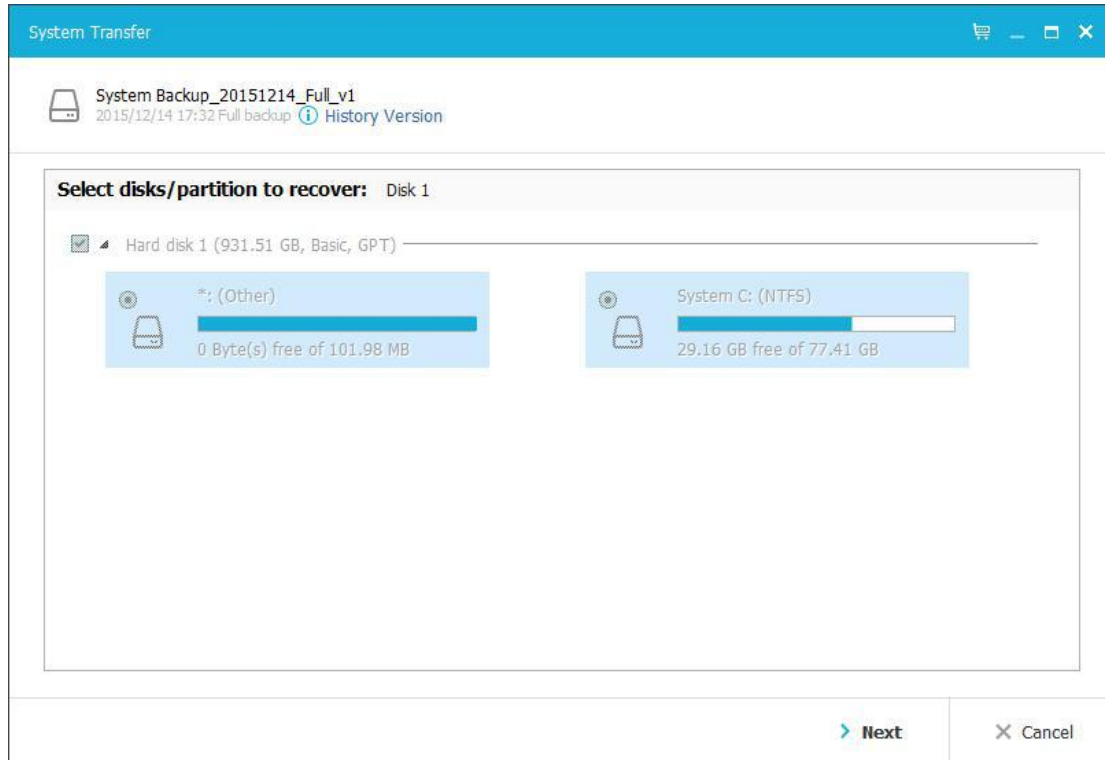
It is allowed to place the system image file and the inf driver file on the WinPE bootable drive if you have enough free space there.

Steps

1. Load target machine from the WinPE emergency disk and ensure the drive which contains system image files has connected to the machine already.
2. Find the option **System Transfer** in the main window.
3. Browse and load the system image file.



4. Select the target drive to restore.
5. Confirm the effect if restoration completes.

**Note:**

Sometimes, if you have some special hard drives, say, hardware RAID, SCSI drive, they may be not listed by default in WinPE environment. Then corresponding driver needs to be installed in order to make the drives available. For more info, you can read: [What to do if the drive cannot be listed by default.](#)

6. After system recovery finishes, you may get some prompted windows asking for driver (.inf file) of a specific hardware. You can find the driver according to the listed hardware info, and add it to ensure you can load from the system normally after the entire system migration is done.

Clone

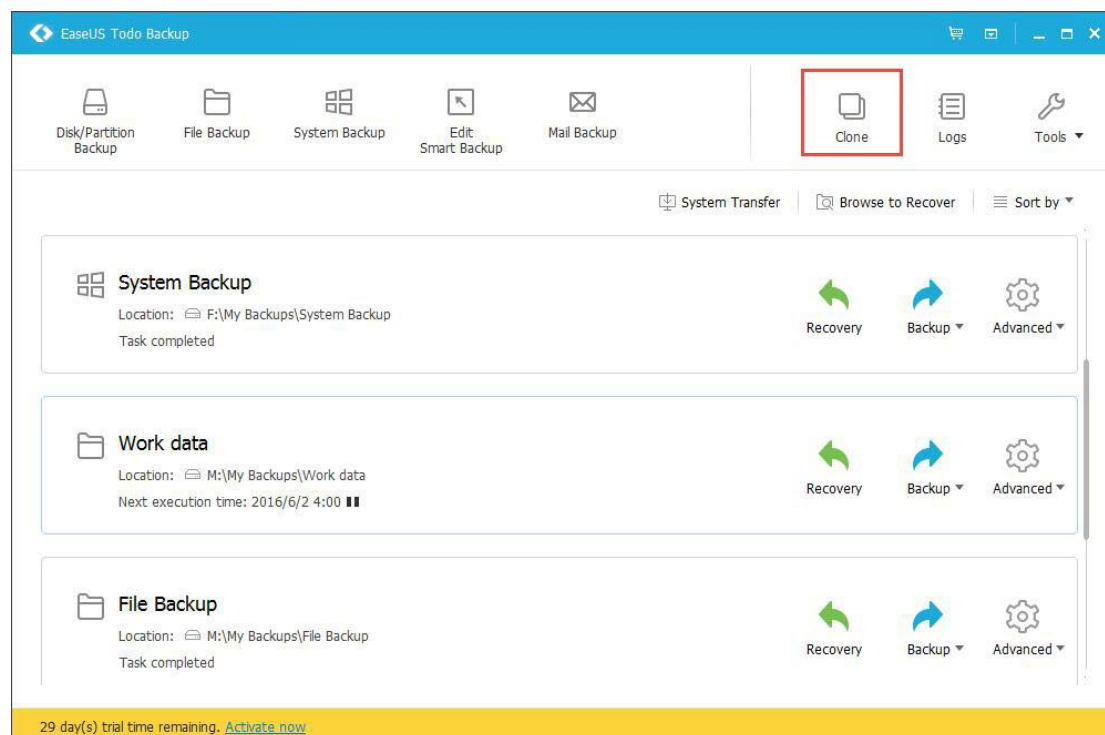
It's a common job to replace the hard drive where Windows exists. This may be resulted from a failing drive or requirement for larger disk capacity. **Disk Clone** option in EaseUS Todo Backup can deal with the job easily.

Disk Clone

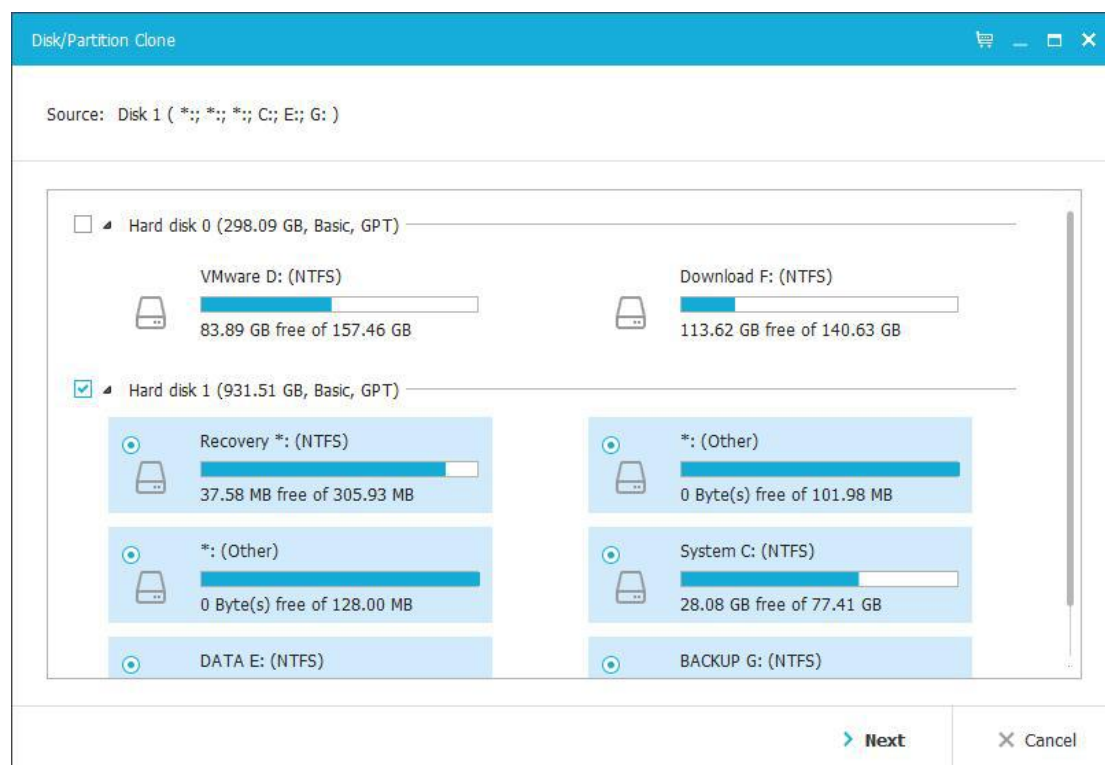
Disk clone will transfer all data (include operating system and program) on the selected hard disk to another. It is especially useful when you want to replace hard disk with a new one. For a successful disk clone, please ensure that the capacity of destination disk is larger than the used space of source disk.

Steps

1. Click **Clone** option at the top right corner.



2. Select a hard disk as source, then click **Next**.

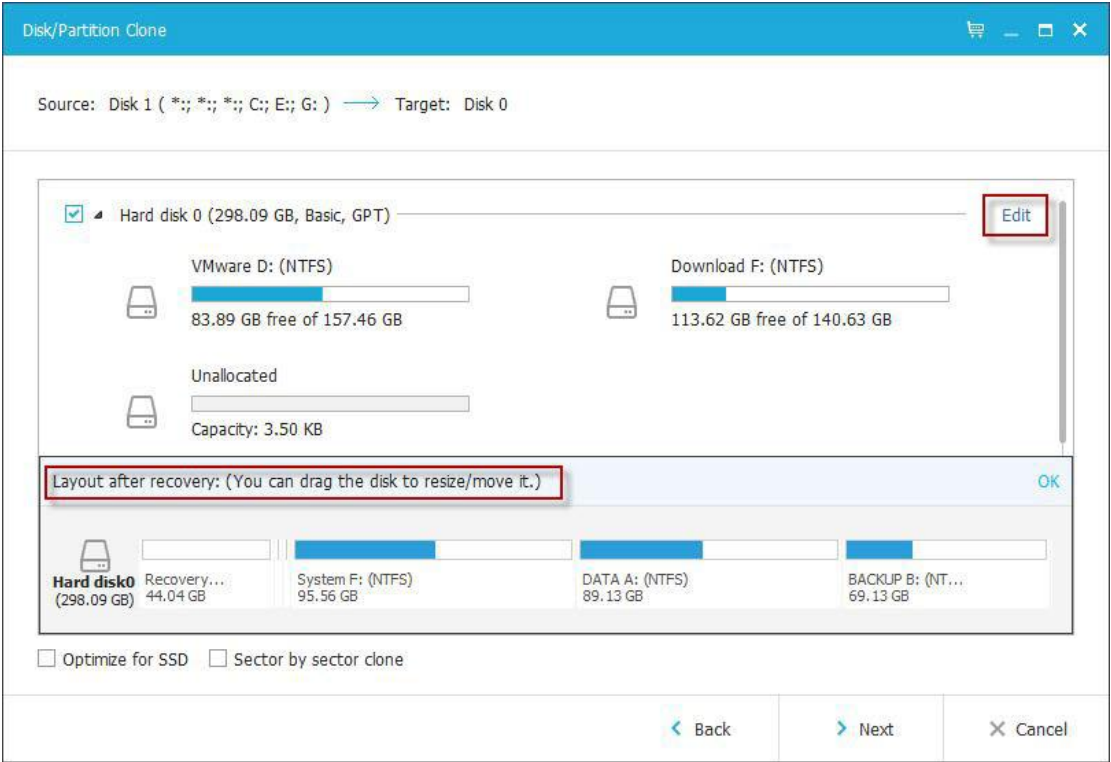


3. Select a hard drive as target, then click **Next**.

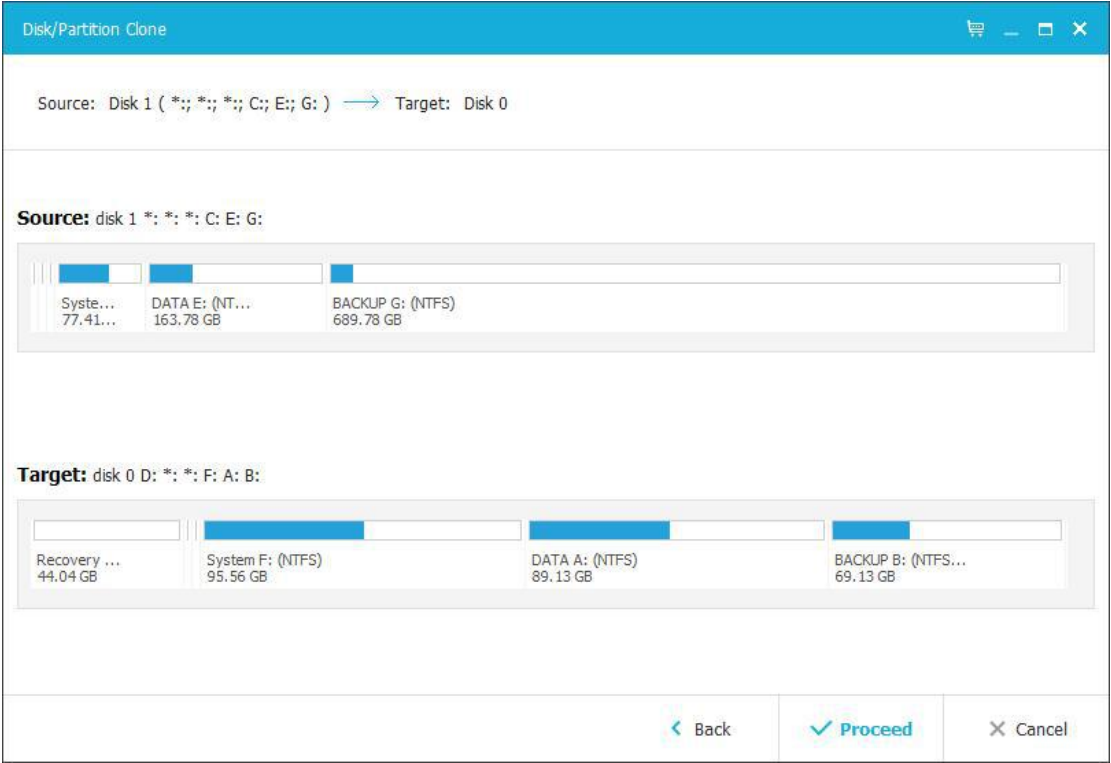
Tips:

The disk structure will display after clicking **Edit**. Drag the partition to determine the size

after clone.



4. Click **Proceed** after you preview and confirm the hard disk layout.



Advanced clone settings

These advanced settings can help you clone a drive more stably and smoothly in some special case. However, without these advanced settings, EaseUS Todo backup can still give you an exact and intact clone.

Optimize for SSD - If the destination disk is an SSD, checking this option will ensure sector alignment in the process.

Sector by sector clone - A sector by sector clone ensures that the destination hard disk/partition is exactly the same as the source hard disk/partition. It will clone all the sectors if the option is checked, even if the sector is blank. As a result, the target will be equal in size to the disk being cloned after the process. This option is found in the same step where you choose the destination hard disk/partition both in the Disk clone and Partition clone wizard.

Note:

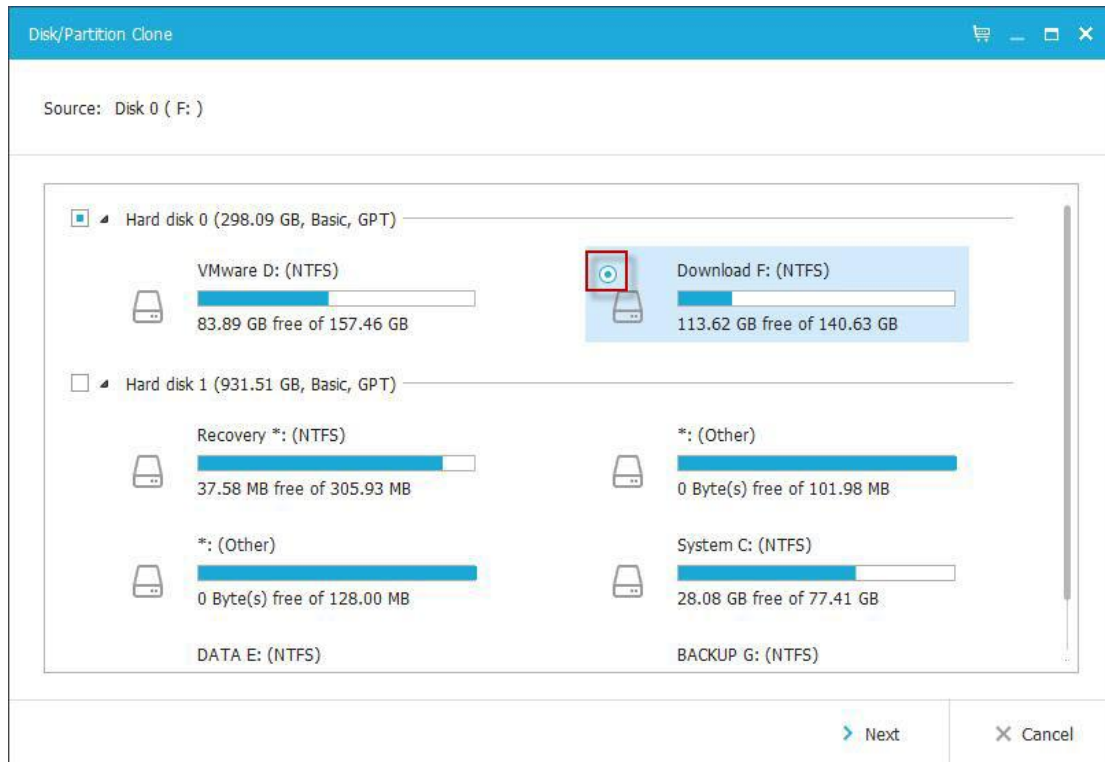
The disk/partition cannot be resized if you choose to clone your disk in the Sector by sector mode.

Partition Clone

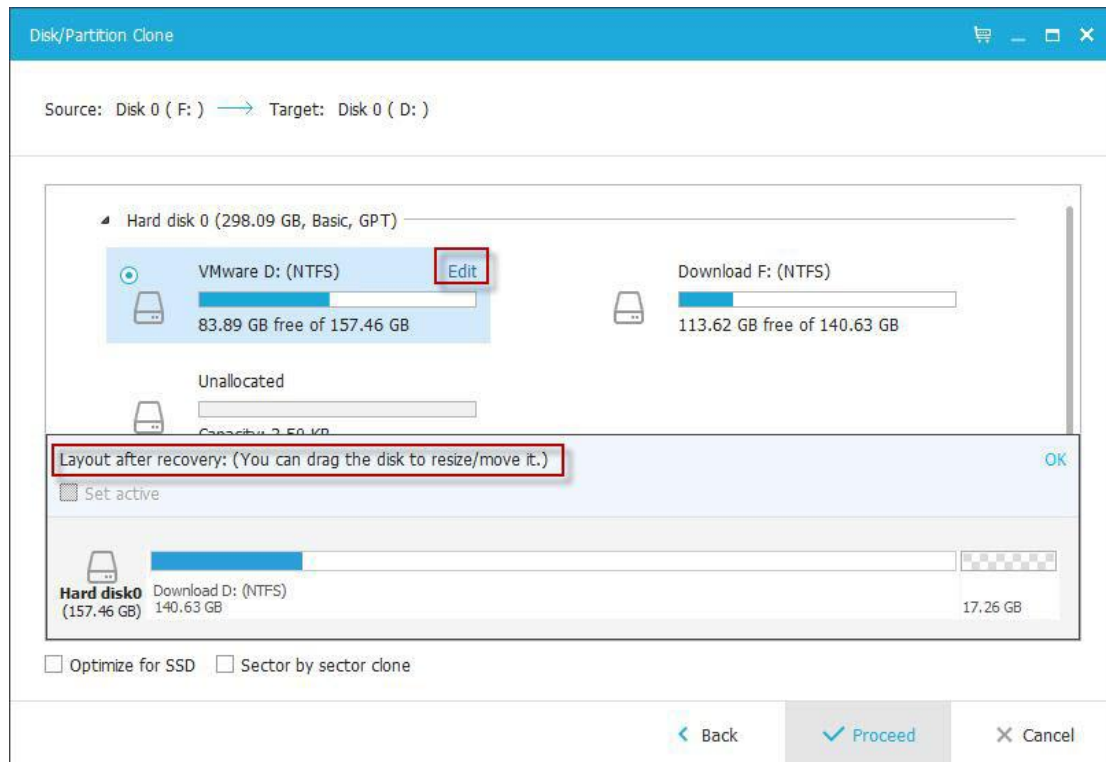
Though backup is very convenient and systematic, yet partition clone is still a simple and intuitive way to create an exact same copy of partition.

Step

1. Select a source partition and click **Next**. Only one partition can be cloned at a time.



2. Select a target partition to proceed clone.

**Note:**

The target partition structure will display after clicking **Edit**. Drag the partition to determine the size after clone.

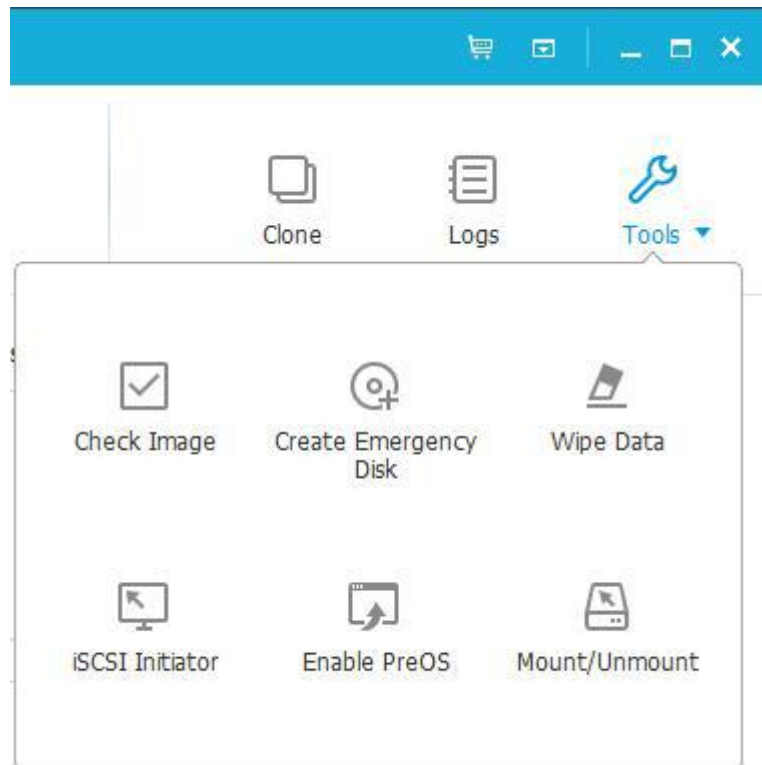
Check **Set active** option if you want to boot from the target partition.

Dynamic Disk/volume clone

Dynamic disk/volume clone is supported. All the dynamic volumes on different disks are listed all together.

Tools

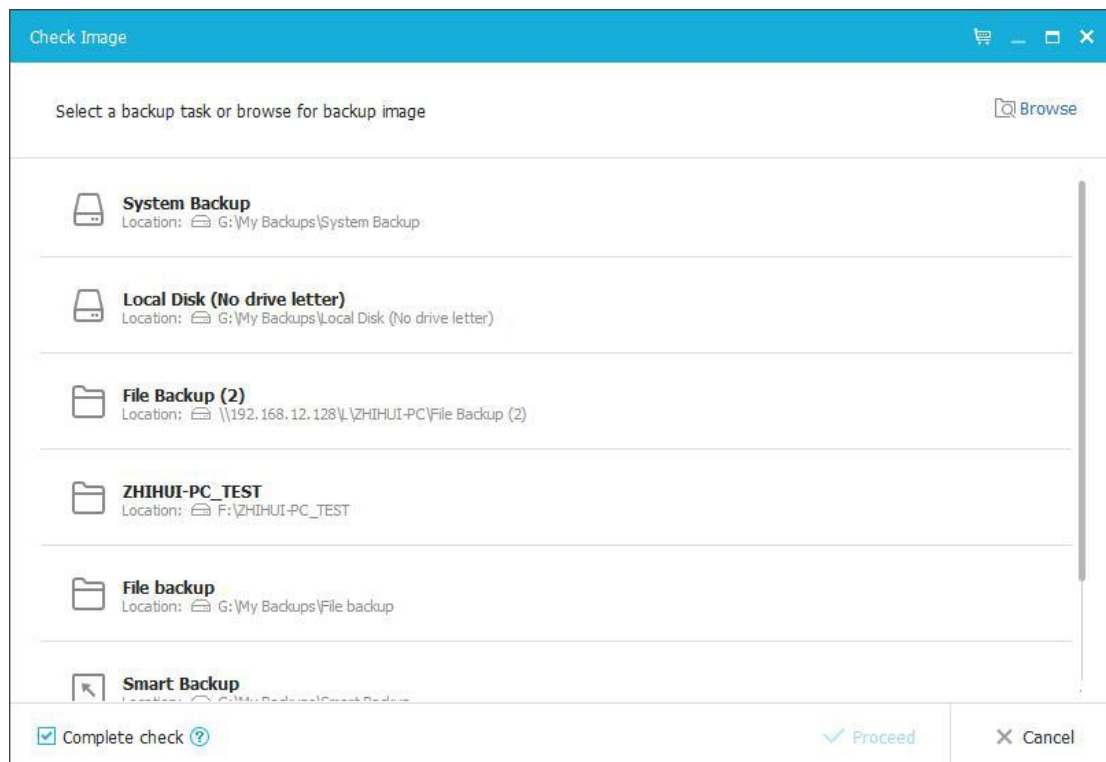
There are some useful options in **Tools** menu. Part of them can make your backup/recovery process more efficient and flexible.



Check Image

Check image can verify the validity of an image file. If our product finds errors during checking process, then the image file might be damaged and cannot be used for recovery.

After clicking **Check Image**, select one backup plan to verify all related image files, or click **Browse** at the top right corner to check one image file only.

**Note:**

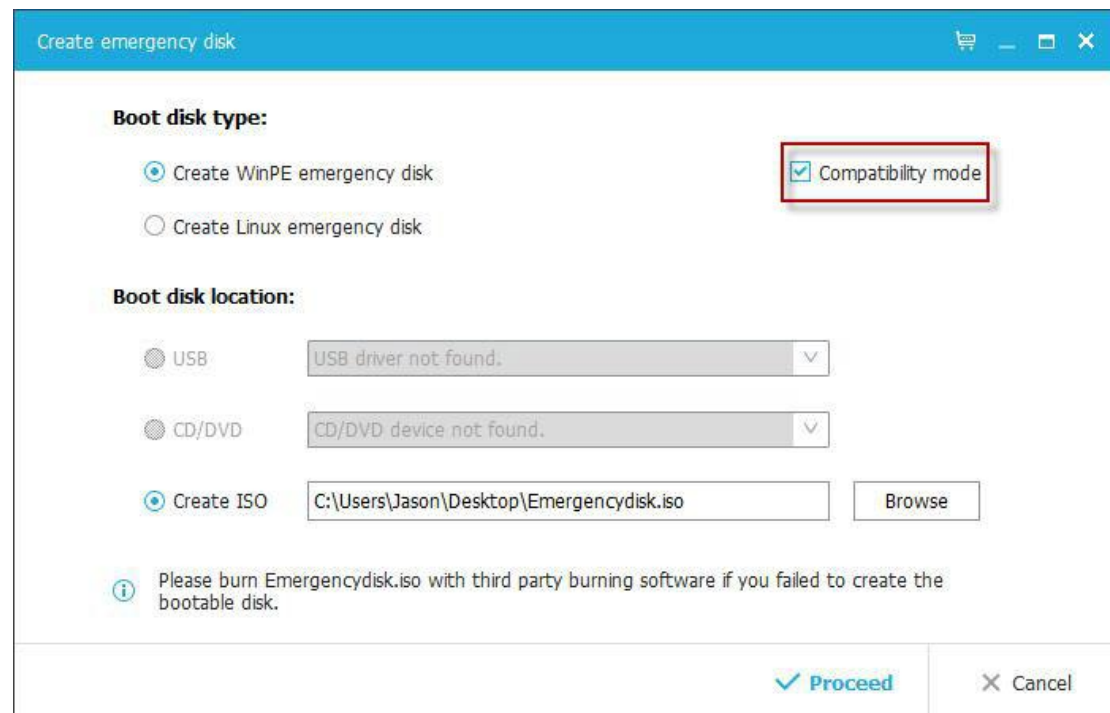
All the images under this backup plan will be checked. So it would take a long time if the backup plan has a large number of images.

Create Emergency Disk

EaseUS Todo Backup allows users to create an emergency USB disk or CD/DVD. It is indispensable when windows system fails to boot.

Procedure of creating emergency disk

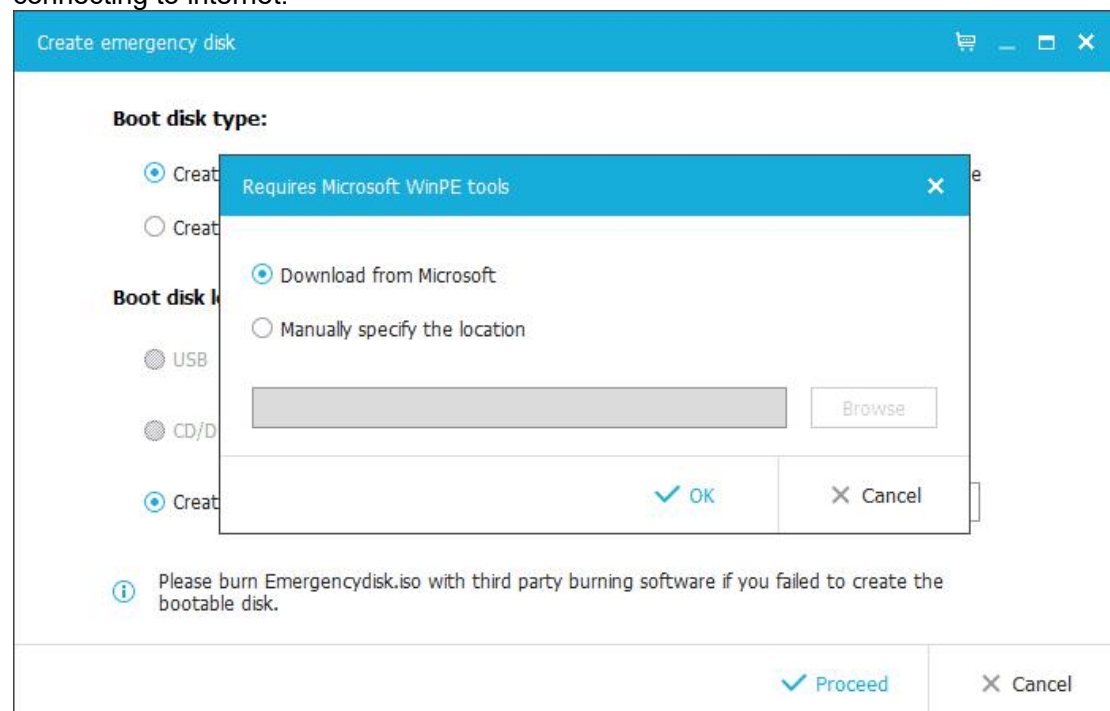
1. Click **Tools - Create emergency disk**.
2. In this step, you have a choice to create a WinPE or Linux emergency disk.



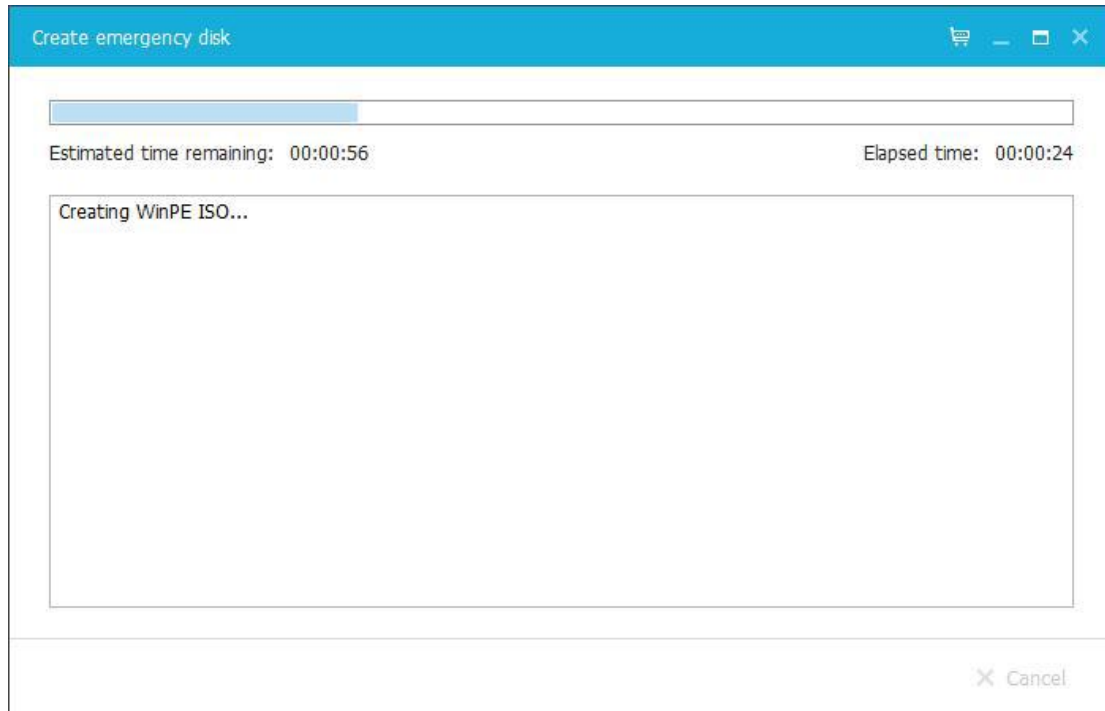
Uncheck the "**Compatibility mode**" will get necessary drivers from current computer and then add to the WinPE emergency disk. If the created emergency disk can't boot normally, you can only check "**Compatibility mode**" to recreate.

3. Select **USB** to create an emergency USB disk or choose **CD/DVD** to burn an emergency CD/DVD, then click **Proceed**.

4. For the first time, if you have checked "**Compatibility mode**", EaseUS Todo Backup will prompt a window to ask you select **Download from Microsoft** or **Manually specify the location**. Download WinPE component from Microsoft is recommended if the computer is connecting to internet.



If you did not check "**Compatibility mode**", it will create directly after click the "Proceed" button.



Note:

To learn more information between WinPE and Linux emergency disk, please click [here](#).

Some useful articles about WinPE bootable disk

Hard Drive Fails to List in WinPE. Click [here](#).

Network Access Issue in WinPE. Click [here](#).

Wipe Data

Permanently erase data on the disk(s) or partition(s). You can set **Erase Times** to wipe data. Use care, as once you perform this operation, it cannot be undone and the data will be permanently lost.

Enable/Disable Pre-OS

Pre-OS can be considered as an alternative of WinPE bootable disk. So it can also help you recovering system when unexpected failure occurs.

Switch the status of Pre-OS between Enable and Disable.

The name of the button depends on the current status of Pre-OS. If Pre-OS is currently enabled, the button will be Disable Pre-OS.

Once the Pre-OS enabled, you will get a EaseUS boot menu when computer boots. After select it, you will get into EaseUS Todo Backup instead of Login Windows.

There are two kinds of Pre-OS environment for different editions.

Linux Pre-OS

For all Trial editions which is based on Linux environment and only contains basic **Recover** and **Clone** options.

Windows Pre-OS

The Linux Pre-OS will be converted to Windows version after [WinPE](#) created. Nearly all features are available in this environment.

ISCSI Initiator

Connect and configure the iSCSI device.

There are two connection modes.

Quick connect

On the **Targets** tab, type name or IP address of the target device in **Quick Connect** text box, then click **Quick Connect**.

Advanced connection

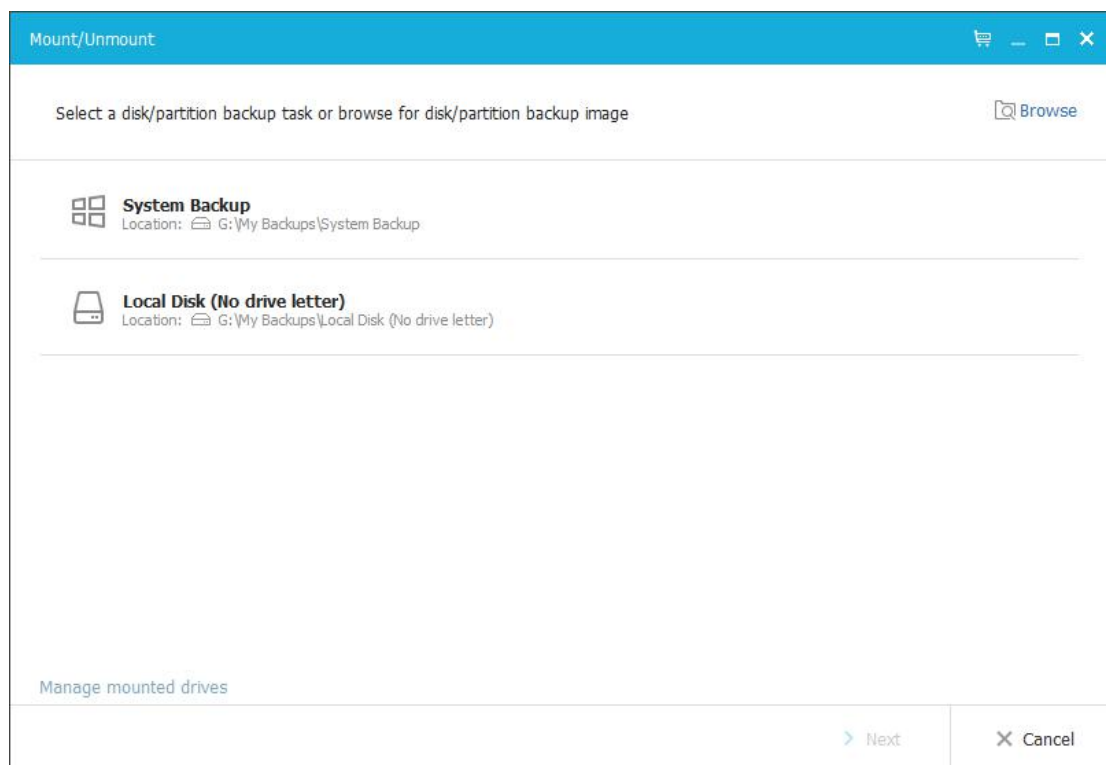
1. Click the Discovery tab.
2. Click Discover Portal to add the target portal. Type the IP address or name to connect.

Once connected, you can backup and restore the iSCSI drive like local hard drive.

Mount/Unmount

In order to browse/confirm the files and folders in a disk/partition image or system image (*.PBD file), we provide the mount function. Users can directly copy needed files from the mounted drive without restoring entire image.

Besides, mount function is a good way to check whether the created image is valid or not.



1. **Tools > Mount/Unmount**, all available backups will be listed.
2. Select one backup and click **Next**.
3. Select the **Source** and click **Next** to proceed mount operation.

If you need to unmount the image, please click **Manage the mounted disks**.

Tips:

Disk/Volume backup and System backup image are supported only.

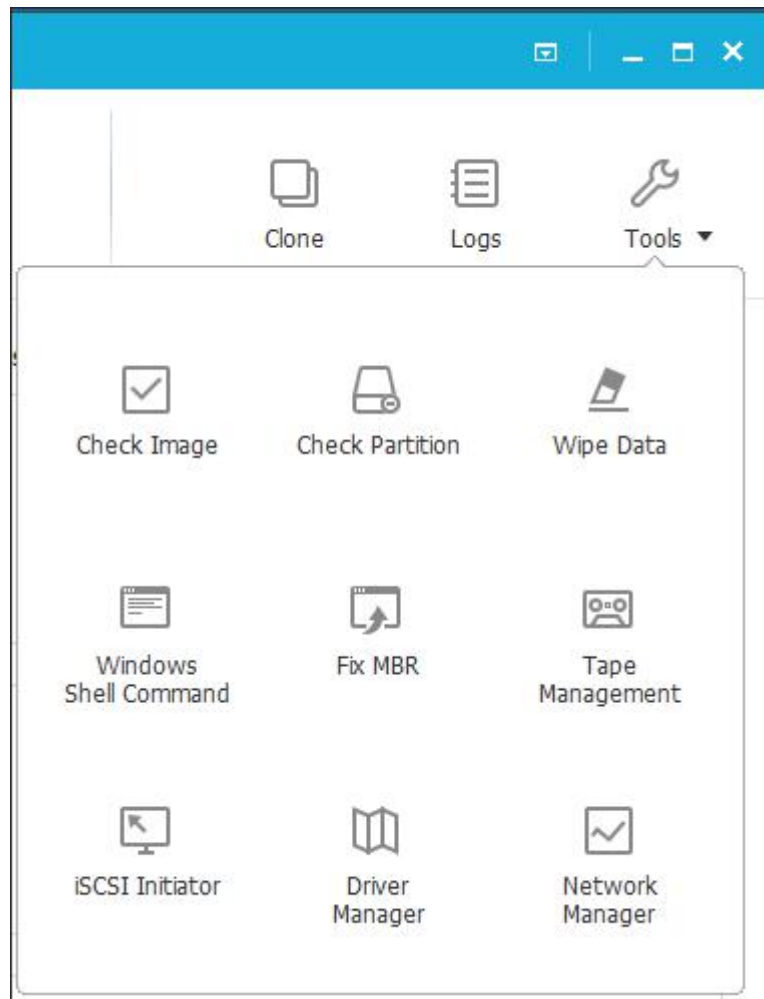
A password is necessary for encrypted backup image.

To fully access mounted virtual partition, please make sure the image is created and mounted in same Windows account.

Mounted drive will automatically disappear after computer restarts.

Special Tools in WinPE

In WinPE and Pre-OS environment, some options in **Tools** menu are replaced by a new option to ensure the recovery process in WinPE can be finished smoothly.



Windows Shell Command

Invoke MS-DOS command box to input different user commands to make backup tasks more efficient and safe. For example, checking errors before backing up a partition with CHKDSK, add hardware driver with Drvload or create a partition with DISKPART.

The knowledge of Windows Command statement is required to use this advanced option,

Driver Manager

Since hardware RAID, SCSI and some network cards cannot be directly recognized without drivers installed in WinPE and Pre-OS environment, So we provide this option to help user add driver for a specific hardware and ensure you can finish the recovery job without interruption.

Network Manager

With this option, user can manage or configure network access parameters if the

operation needs to read shared folder but our product failed in the first try.

Map network drive - Map a network drive as a local drive to backup or restore.

Edit network drive - Change parameters of the mapped drive.

Disconnect network drive - Remove mapped drive created with **Map network drive** option.

IP settings - Configure the IP parameter.

Fix MBR

Fix MBR can help you get rid of some boot problems. It will write fresh boot information to the MBR sector.

You can locate this feature in **Tools** in WinPE Pre-OS or WinPE emergency environment, click **Fix MBR**, choose the disk you want to repair and then press **Proceed**.

Check Partition

A partition with logic errors may fail to back up with our product, so it is necessary to check and fix errors before backup. This feature is available in WinPE Pre-OS or WinPE emergency environment, click **Tools > Check partition**, choose the partition and check **Automatically fix file system errors**, after that click **Next** to start the operation.

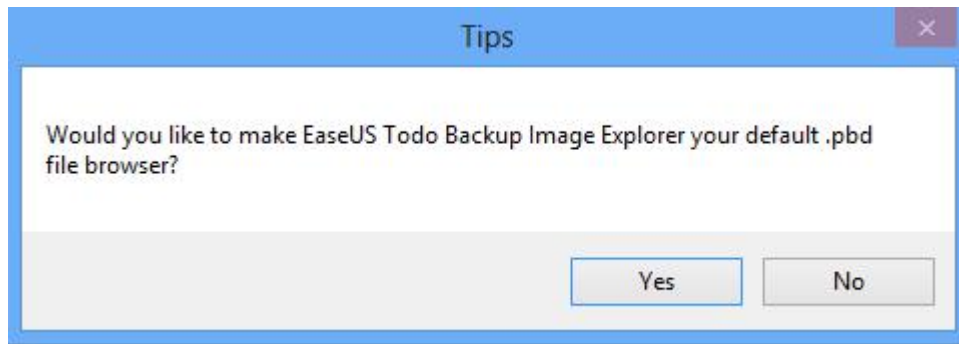
Image Tool

Thank you for using **EaseUS Todo Backup Image Explorer**. It is to extract files/folders from a .PBD image file without installing **EaseUS Todo Backup**. Being less than 3 MB, it is simple and easy use, managing files as Windows Explorer.

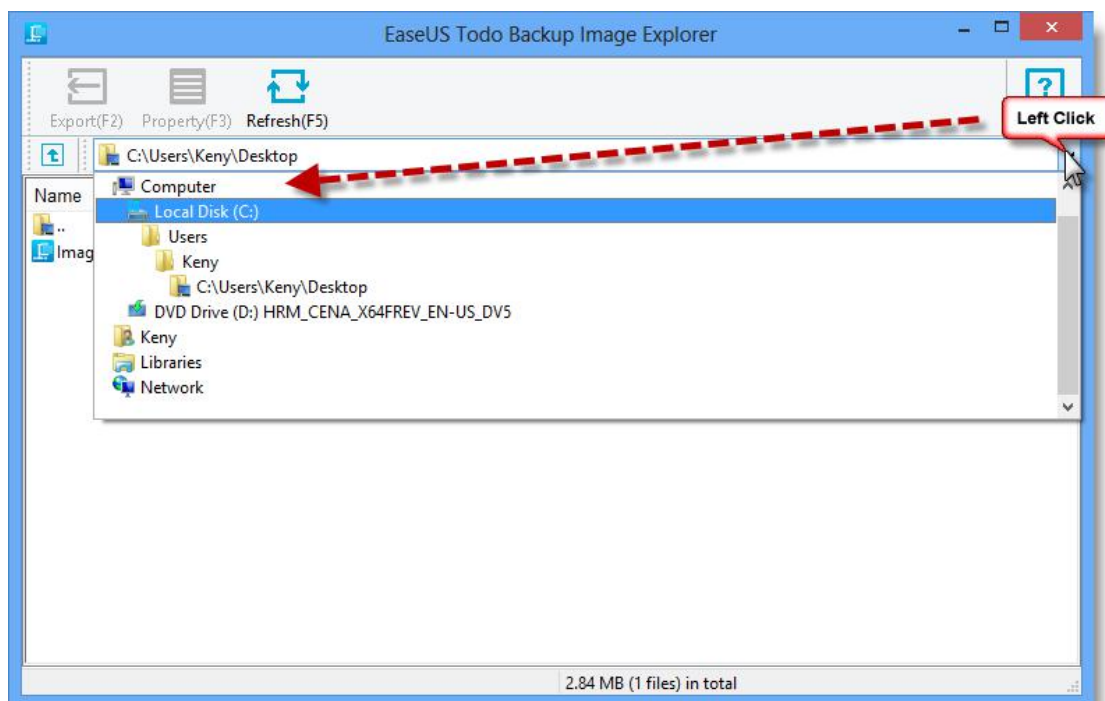
How to Use

Here is to guide you how to extract files from .pbd image file with Image Tool.

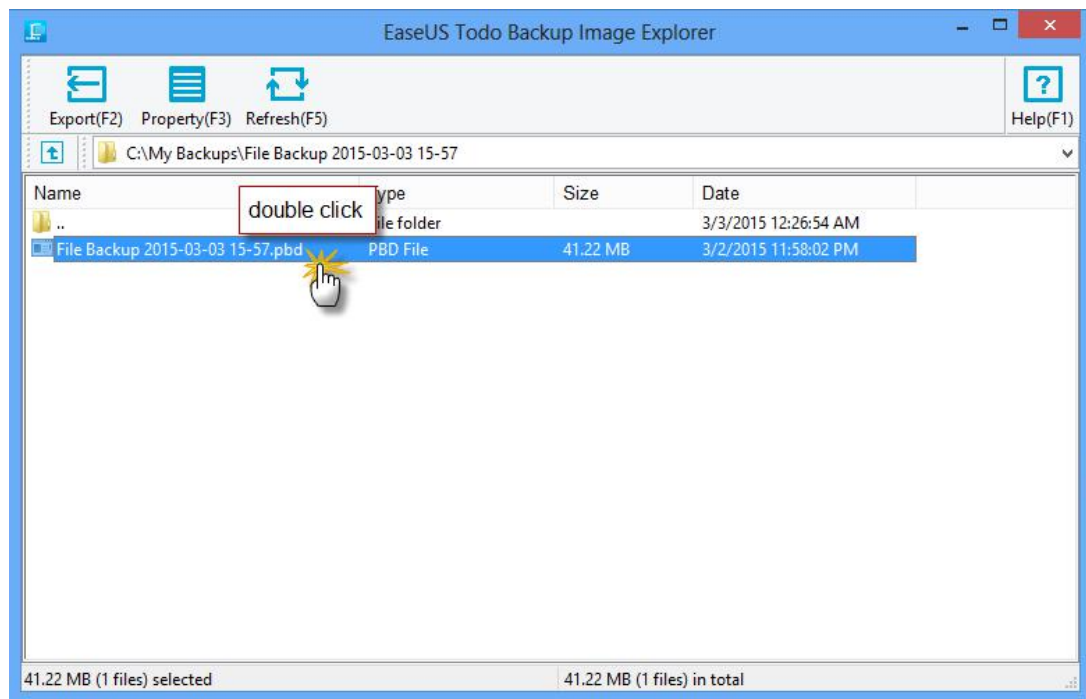
1. [Download](#) **EaseUS Todo Backup Image Explorer** then launch it. Tick **Yes** in pop-up window below to build connection between .pbd image file and Image Tool.



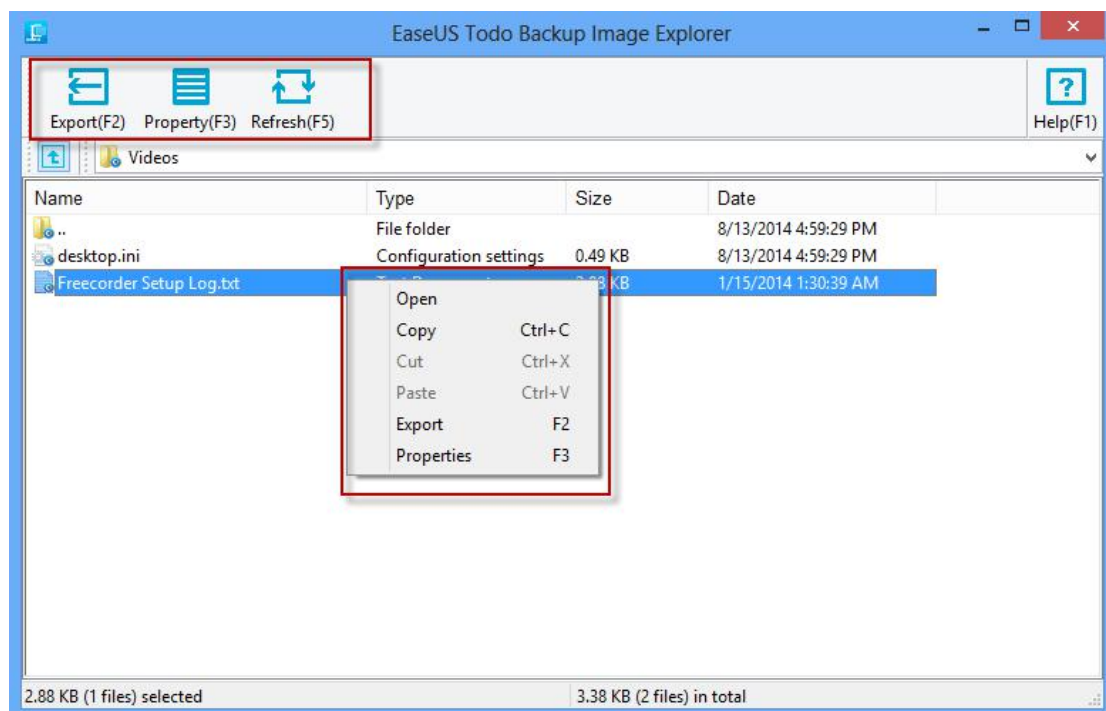
2. Desktop folder will be automatically displayed. Click the marked drop-down arrow to unfold other paths.



3. Locate the .pbd image file and double click it.

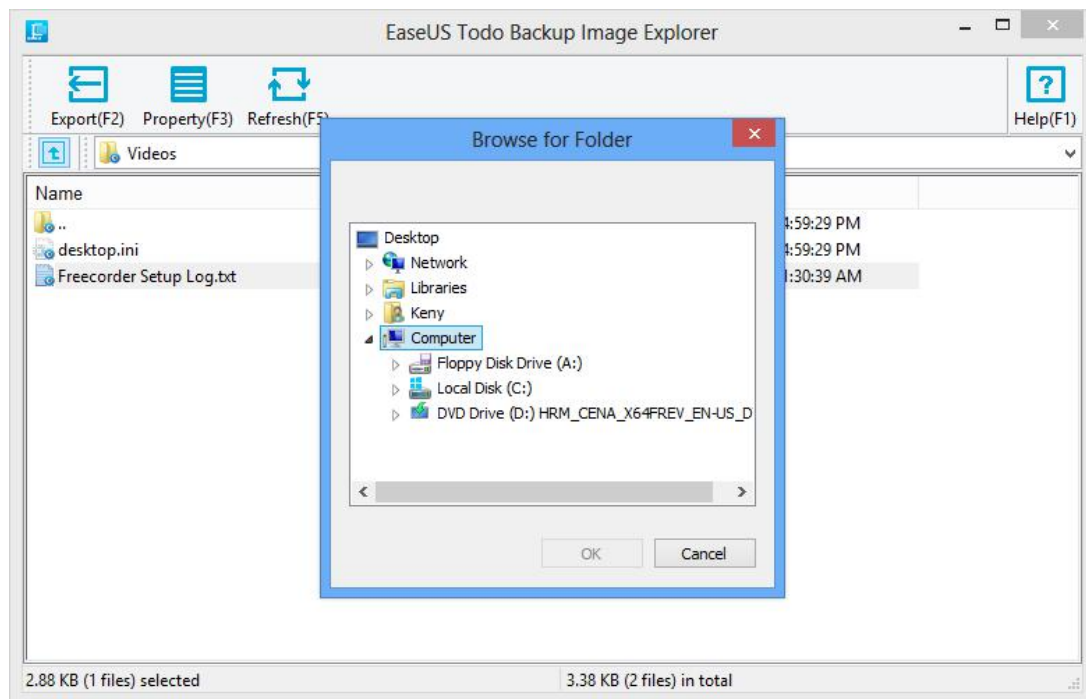


4. All files and folders belong to .pbd image file are marked with EaseUS logo.



To check the desired content, please click **Property (F3)** or directly **Open** the file/folder.

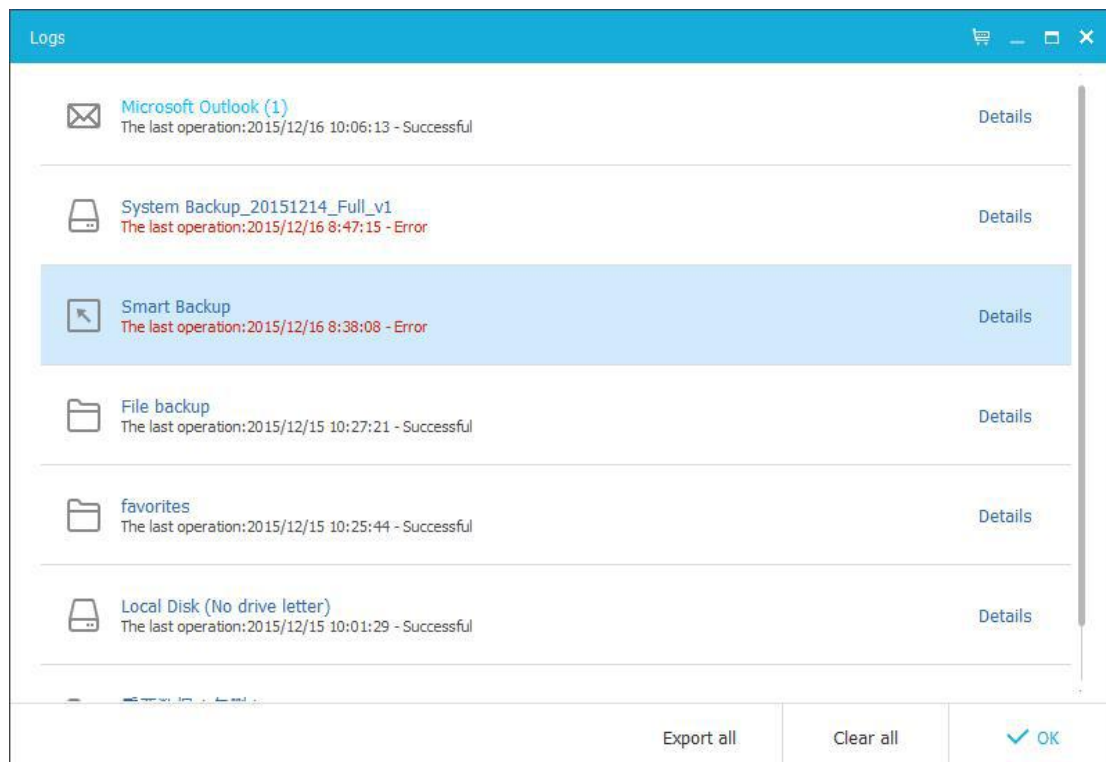
5. To extract the desired file/folder, please click **Export (F2)** or **Copy** in right-click menu.

***Tips:***

An additional copy of Image Tool is automatically created in "C:\Program Files\EASEUS\". To completely uninstall Image Tool, please manually delete it after uninstallation.

Logs

All the backup operations and statuses are recorded in **Logs**. Failed operations are marked in red. Click **Log Details** for reference.



These operations can be performed:

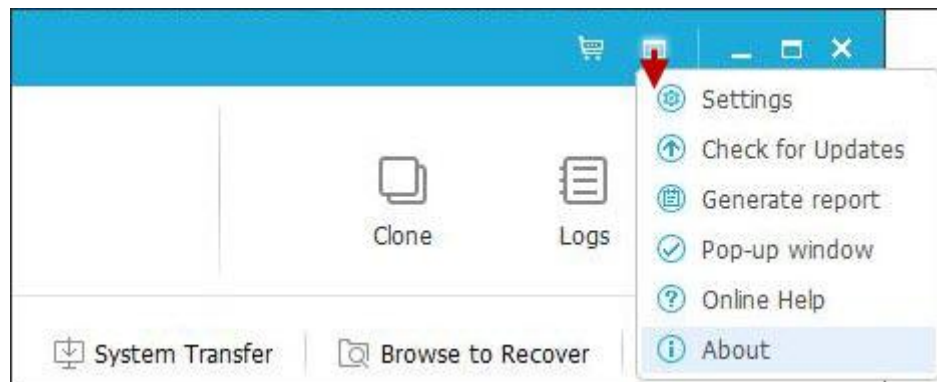
Export all - Output all logs to a TXT or XLS file.

Clear all - Delete all logs.

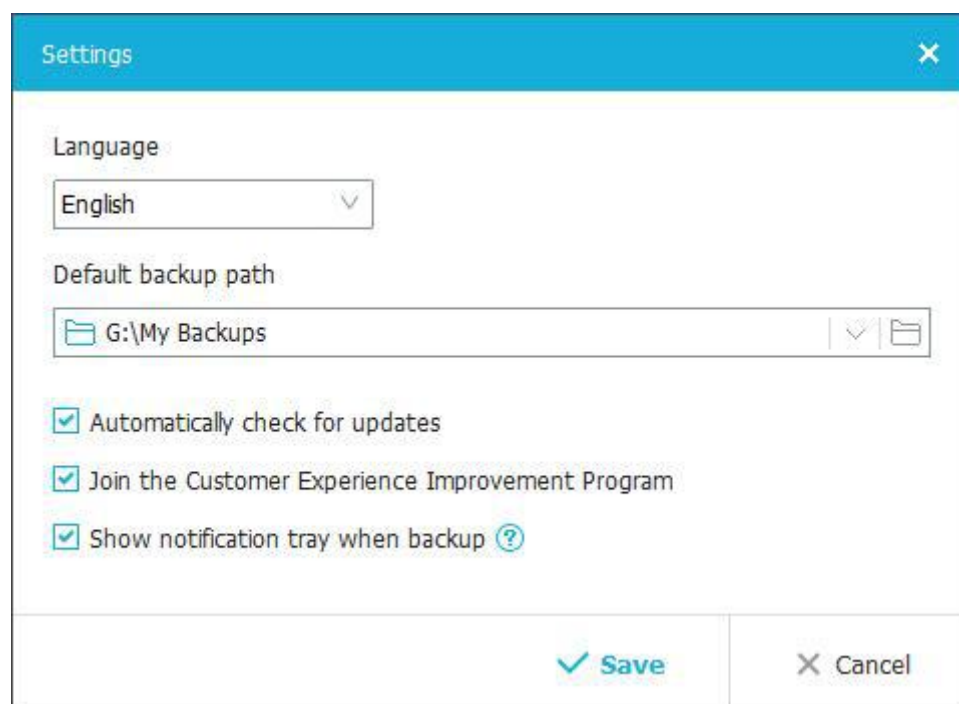
Details - Show the detailed records of one backup plan

Basic Settings

There is a drop-down menu at the top right corner, click it, there will be an option **Settings** in the menu.



Click **Settings** will bring you the following configuration panel, the first 2 options here are very important. You can switch among German, English, Spanish, French, Italian and Japanese in **Language** box and edit/modify **Default backup path** here.



For the other 2 check boxes, there will be no update report if you uncheck the option **Automatically check for updates**.

Join the Customer Experience Improvement Program can help us improve our product better with the info from your daily operation with our product.

Todo backup will not show any notification tray if you uncheck the **Show notification tray when backup**.

Support

If you cannot find what you are looking for in this help, we encourage you to visit our [Knowledge Base](#) which includes solutions for some common issues and detailed guide regarding how to use EaseUS Todo Backup.

When you encounter an error/problem, please **Generate report** and sent it to us, so we can assist you more efficiently.

