

# EaseUS<sup>®</sup> Disk Copy User Guide



# Table of contents

Welcome.....	- 1 -
Glossary.....	- 1 -
Getting Started.....	- 1 -
Hardware Requirements.....	- 1 -
System Requirements.....	- 1 -
File System Supported.....	- 2 -
Devices Supported.....	- 2 -
Language Supported.....	- 2 -
Edition Comparison.....	- 2 -
Activation.....	- 3 -
Disk Clone.....	- 4 -
Partition Clone.....	- 9 -
WinPE Bootable Disk.....	- 13 -
Create a bootable disk.....	- 13 -
Boot from the bootable disk.....	- 15 -
Feedback and Support.....	- 17 -

# Welcome

Thank you very much for choosing **EaseUS Disk Copy**.

**Disk Copy** allows you to clone source disk/partition(s) to the target disk/partition(s) "as is" or resized proportionally. It is possible to clone a larger disk to a smaller one, provided that the smaller hard disk has enough capacity to fit the contents of the larger disk.

Disk Copy can be run from a live Windows operating system or a bootable disk based on Windows WinPE.

# Glossary

## Disk and Partition

A partition can be thought of as a division or "part" of a real hard disk drive, and it is really only a logical separation from the whole drive. Partitions are also sometimes called disk partitions and when someone uses the word drive, they usually mean a partition with a drive letter assigned.

## Sector by Sector copy

A sector by sector copy ensures that destination hard disk/partition is exactly the same as source hard disk/partition. With this option enabled Disk Copy will replicates all the sectors, even if the sector is blank or it is a logically bad sector. As a result, the target will be equal in size to the disk being cloned after the process.

# Getting Started

This part outlines basic parameters to use **EaseUS Disk Copy**. It is to help you acquire a general understanding before you get started.

## Hardware Requirements

The list below shows the necessary requirements of Disk Copy.

- 800 MHz processor or faster
- A minimum of 1 GB RAM
- CD-R/RW, DVD-R/RW, DVD+R/RW or DVD+R DL drive for bootable media creation
- PS/2 or USB 1.1/2.0/3.0 Mouse and Keyboard
- A minimum of 1GB available space on the hard disk

## System Requirements

Make sure you are running any one of listed operating systems:

- Windows XP
- Windows Vista
- Windows 7
- Windows 8
- Windows 8.1

- Windows 10
- Windows Server 2003/2008/2012/2016
- Windows Small Business Server 2003/2018/2011
- Windows Home Server 2011

## File System Supported

**EaseUS Disk Copy** supports file systems, including FAT12, FAT16, FAT32, NTFS and EXT2/3. Other files systems are shown to be **unknown**.

## Devices Supported

**EaseUS Disk Copy** supports the type of disk as below:

- Parallel ATA (IDE) HDD
- Serial ATA (SATA) HDD
- External SATA (eSATA) HDD
- SCSI HDD
- All levels of SCSI, IDE and SATA RAID controllers
- USB 1.0/2.0/3.0 HDD
- IEEE 1394 (FireWire) HDD
- SATA SSD/PCI-E SSD/mSATA SSD/M.2 SSD

MBR and GPT hard disk, Basic and Dynamic hard disk are supported. EaseUS Disk Copy can support up to 16TB hard disk and 32 disks at most.

## Language Supported

- English
- German
- Spanish
- French
- Italian
- Portuguese
- Polish
- Japanese
- Chinese (Traditional)
- Chinese (Simplified)
- Korean

## Edition Comparison

EaseUS provides two paid editions of Disk Copy, Professional and Technician edition. Both of them can be converted from EaseUS Disk Copy Demo edition by filling in a purchased license code.

**Professional Edition** - The license is intended to use the software only on one computer and for your own personal use.

**Technician Edition** - It allows unlimited usage for multiple customers by one independent technician only who is defined as an independent managed service provider. After serving your customers, EaseUS Disk Copy Technician Edition should be Removed.

**Tips:**

*Disk Copy provides the demo edition for testing. It is able to make a plan, but it cannot apply the real operation.*

**Feature Comparison**

	Professional	Technician
Disk/partition clone	•	•
Sector level clone	•	•
WinPE bootable disk	•	•
License type	Single license	Technician
Business usage	-	•

## Activation

An activation window is prompted when you launch EaseUS Disk Copy Demo first time. Enter the code consisted of 25 digits and letters in Demo to upgrade to full version.

Activate now ×

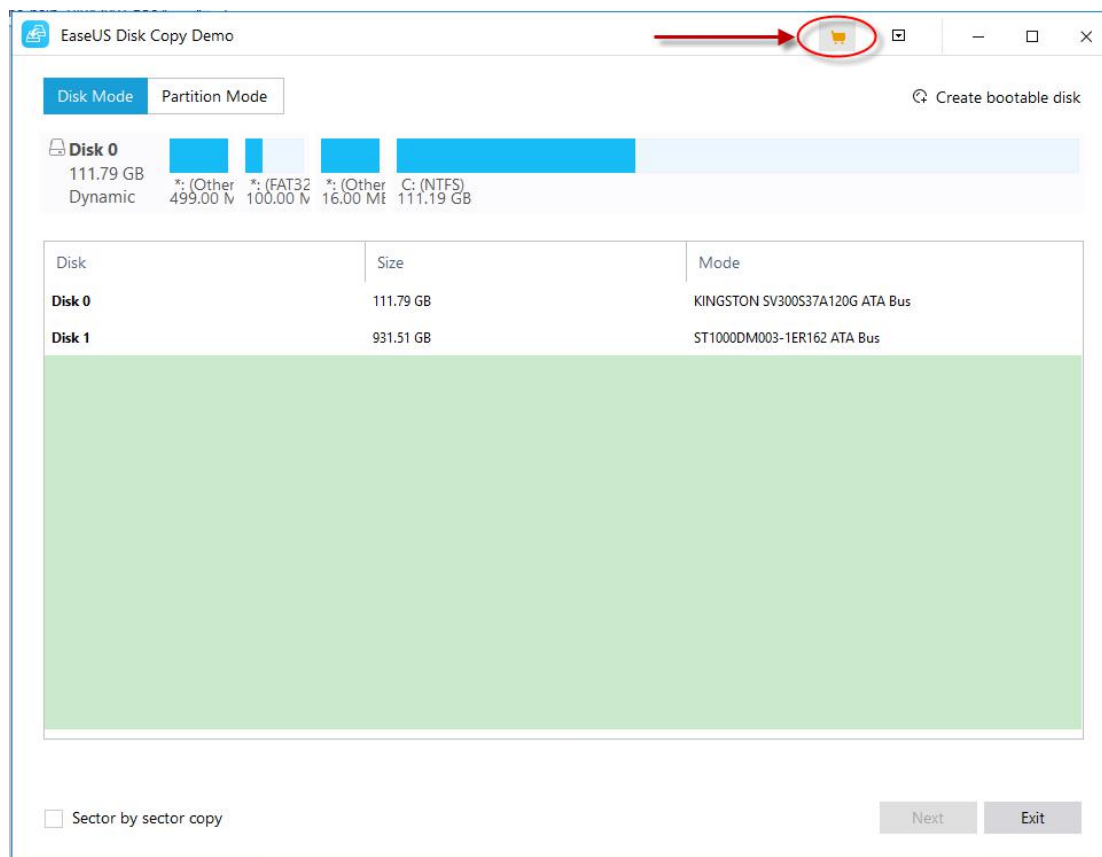
Features	Pro	Technician
Disk/Partition copy	✓	✓
Sector level copy	✓	✓
Business usage	✓	✓
Capable of delivering technical service to clients	—	✓
	\$59.9	\$259
	Lifetime <span style="font-size: small;">▼</span>	Lifetime <span style="font-size: small;">▼</span>
	<a href="#">Buy Now</a>	<a href="#">Buy Now</a>

Current license: Not Activated!

License code:

Activate now
Later

Click **Later** to start the demo experience. Click the icon of shopping cart on top menu to get back activation window.



## Disk Clone

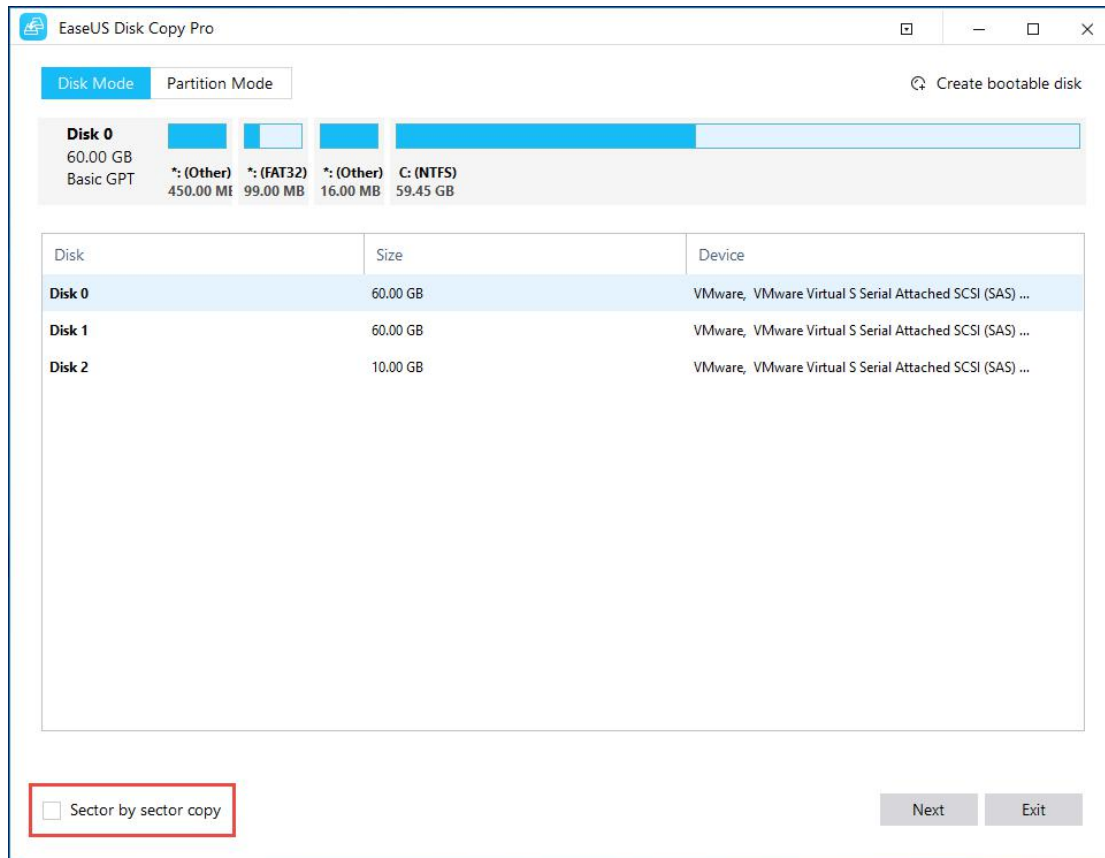
**Disk Clone** copies one disk to another and makes the data on 2 disks are completely the same.

### Read me before starting the clone:

1. The size of destination disk should be equal or larger than the source disk when using sector by sector clone.
2. It is possible to clone a larger disk to a smaller one if the smaller hard disk has enough capacity to fit the contents of the larger disk and you did not tick "Sector by sector copy" option.
3. All data on destination disk will be erased.

### Four Steps for disk clone:

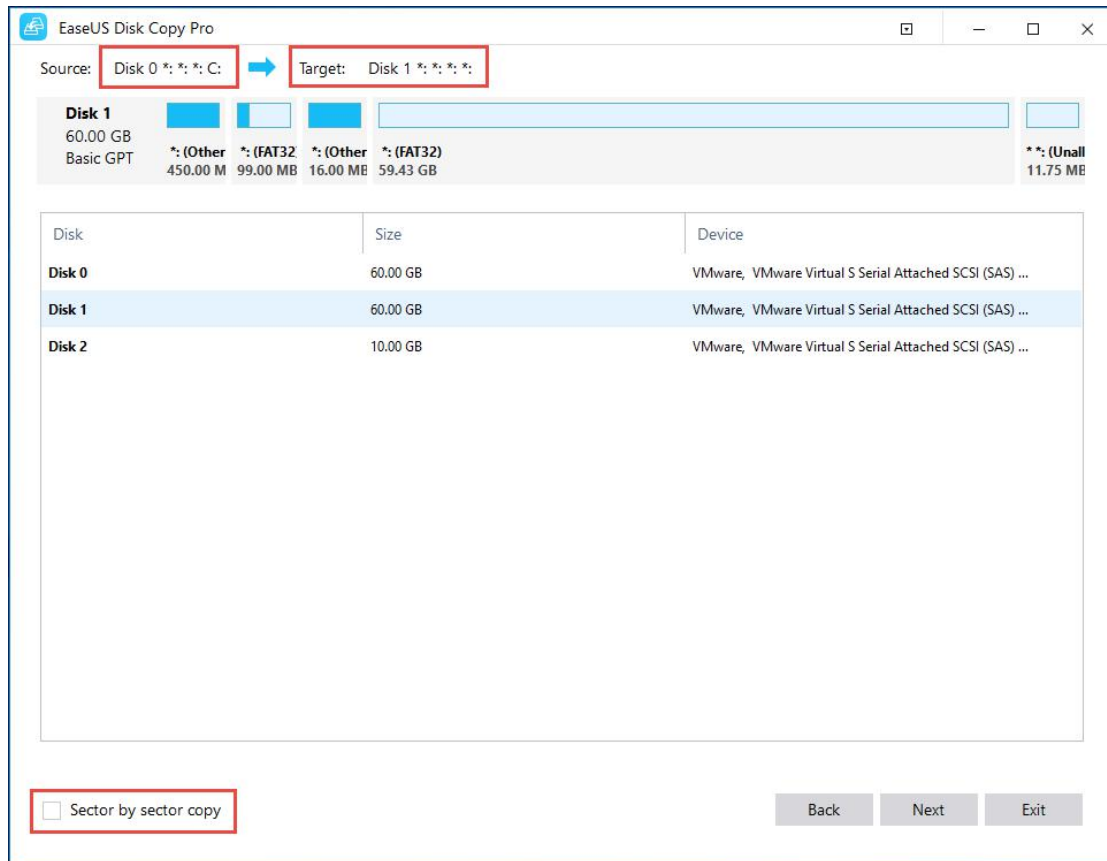
1. Choose "**Disk mode**" and select a source disk, then click "**Next**".



**Note:**

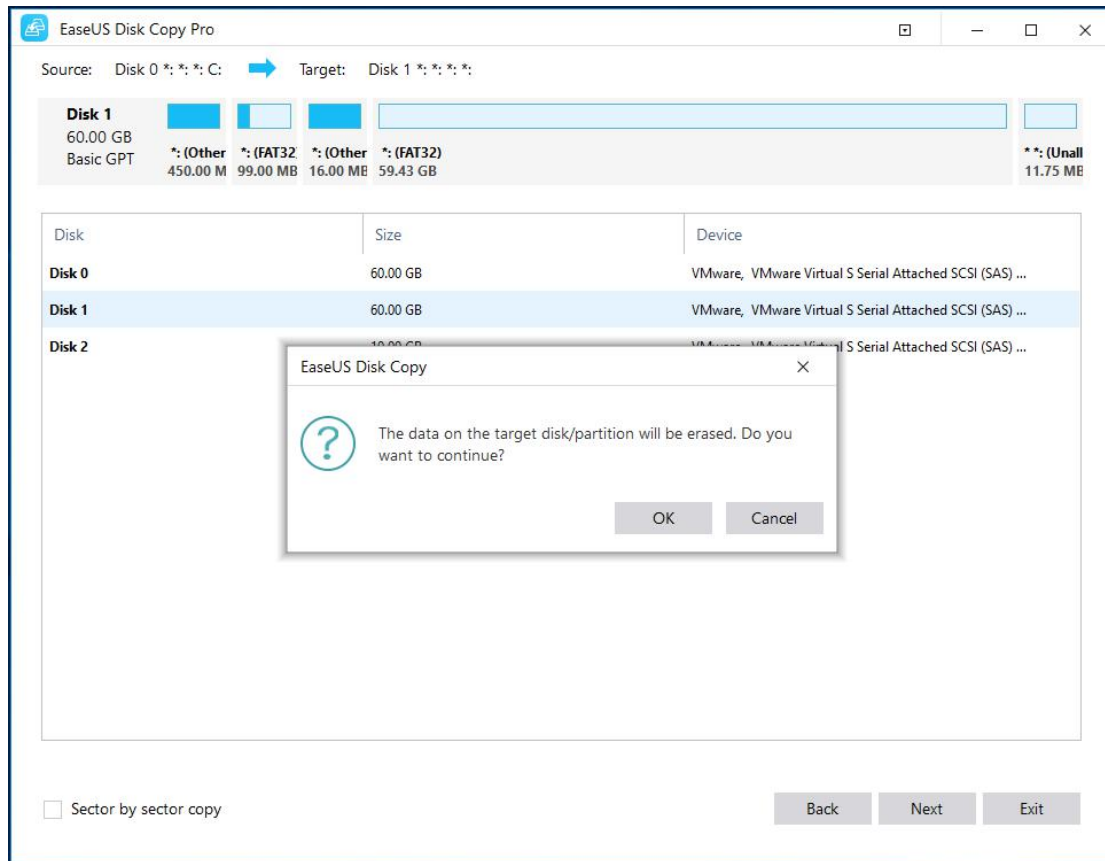
Check the "Sector by sector copy" option if you need a sector level clone.

2. Choose a destination disk and then click "**Next**".

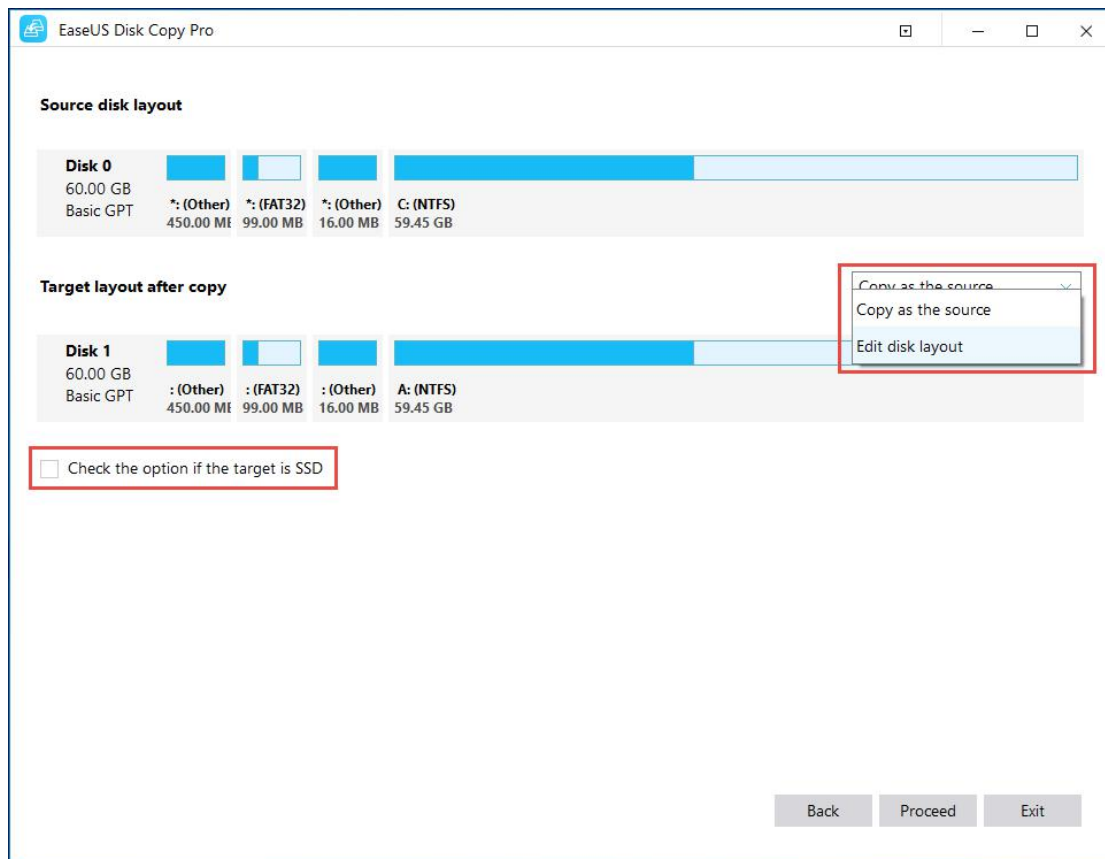


A warning message tells you that the data on the destination disk will be overwritten. Click the **“OK”** to continue if you do not have important data on the destination disk.





3. Edit the disk layout and then click the **Proceed** to continue.



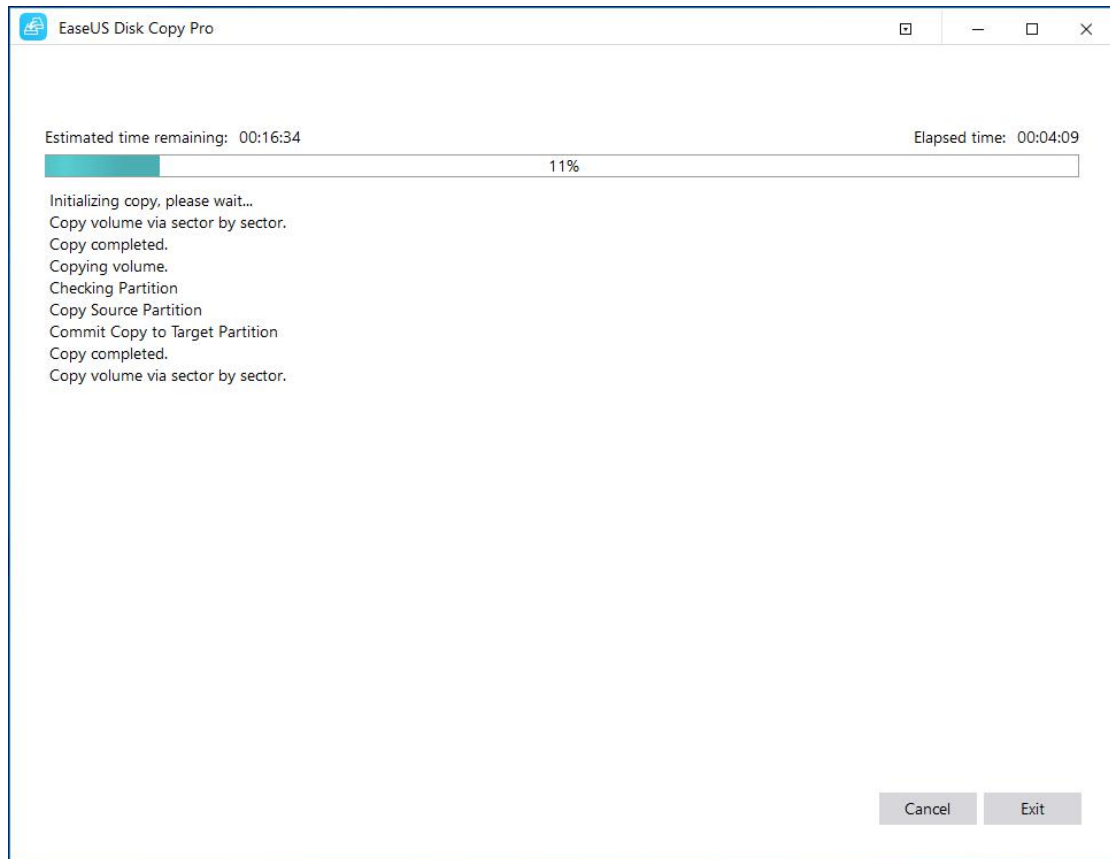
“Copy as the source” doesn’t change anything on destination disk and the layout is same as source disk.

“Edit disk layout” allows you manually resize/move partition layout on this destination disk.

**Note:**

Check the optimization for SSD option if the target disk is SSD.

4. Finish the cloning.

**Note:**

If the source disk is a system disk, you are suggested to disconnect the source disk then boot this computer from the cloned disk.

## Partition Clone

**Partition Clone** copies source partition to destination partition or unallocated space and makes the data on source and destination are completely the same.

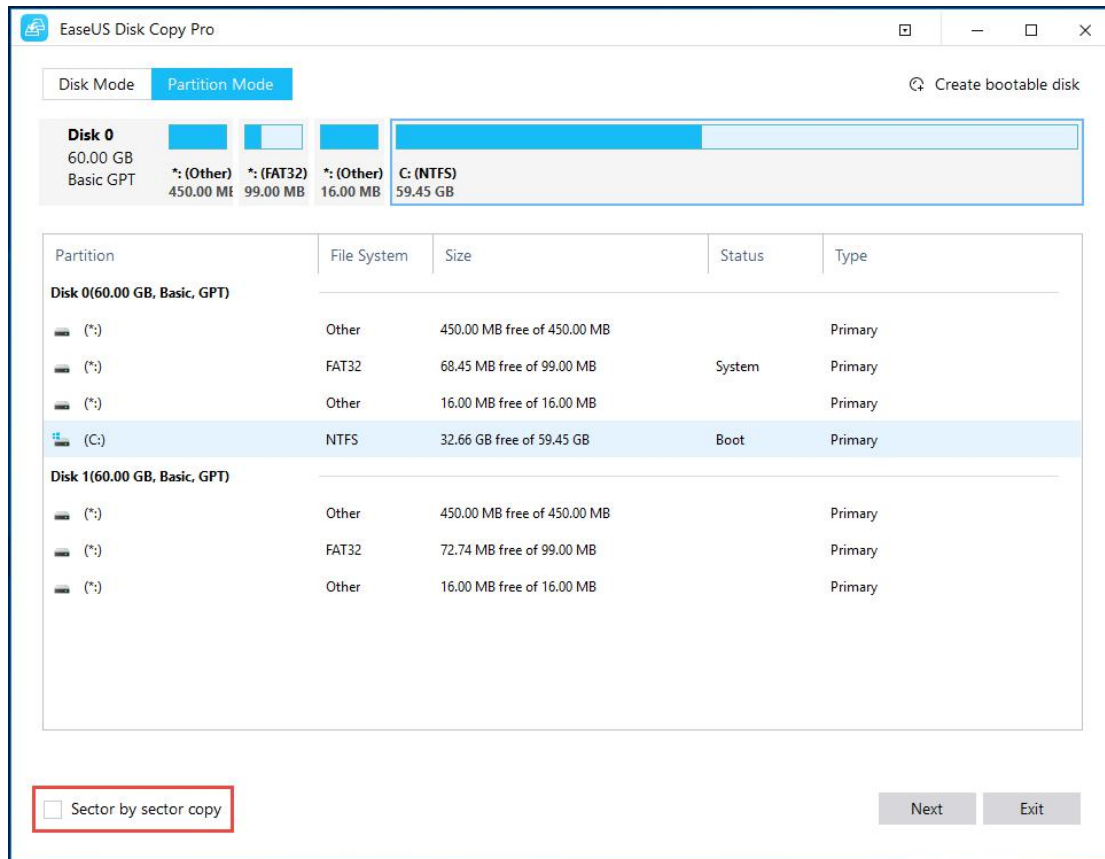
**Read me before starting the clone:**

1. The size of target partition should be equal or larger than the source partition when using sector by sector clone.
2. It is possible to clone a larger partition to a smaller one if the smaller partition has enough capacity to fit the contents of the source partition and you did not tick “Sector by sector copy” option.

3. All data on destination partition will be erased.

### Four Steps for partition clone:

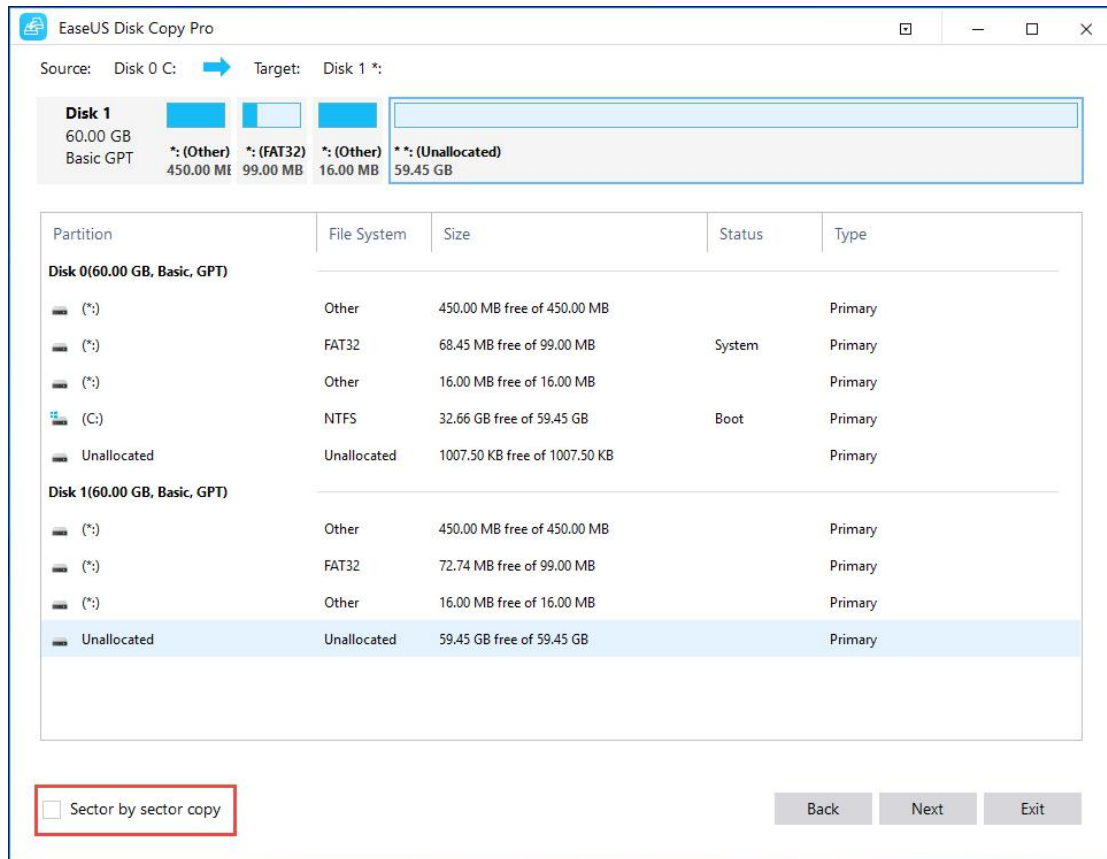
1. Choose "**Partition mode**" and select a source partition, then click "**Next**".



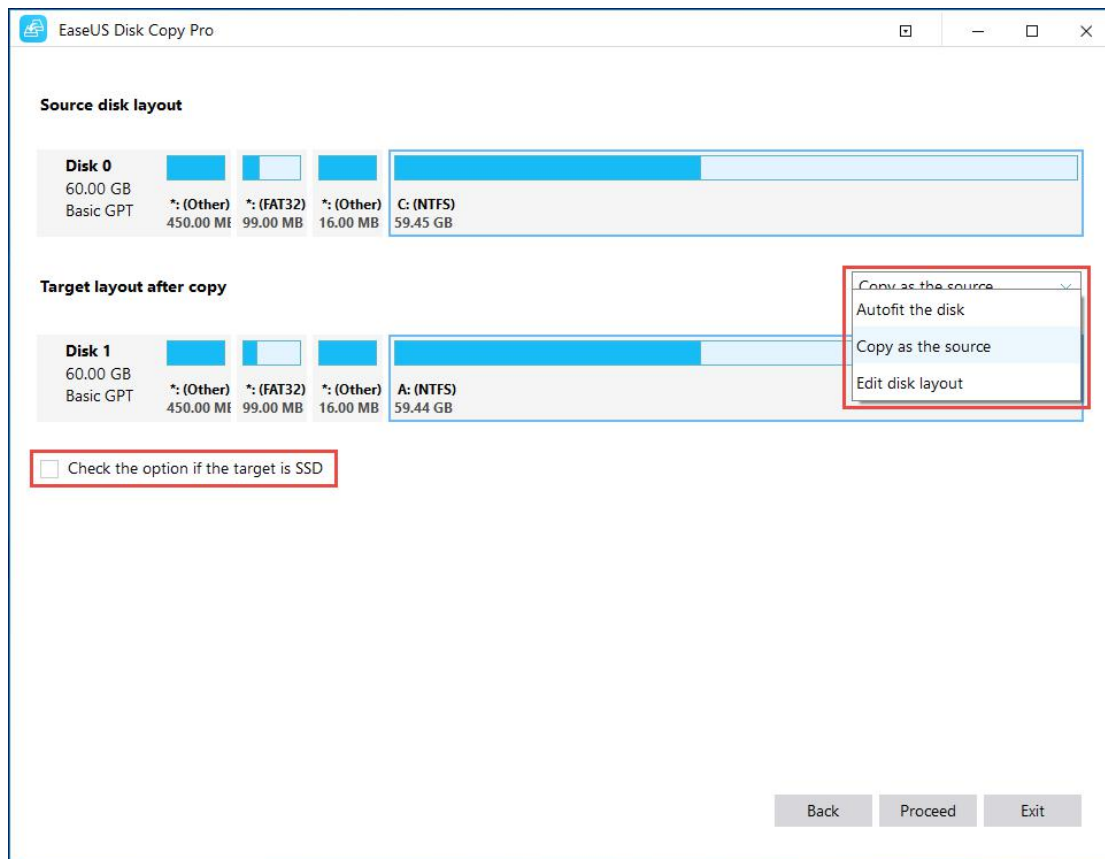
### Note:

Check the "Sector by sector copy" option if you need a sector level clone.

2. Choose a destination partition and then click "**Next**".



4. Edit the disk layout and then click the **“Proceed”** to continue.



**“Autofit the disk”** resize the layout on destination disk according to the size of it to make the disk as the best status.

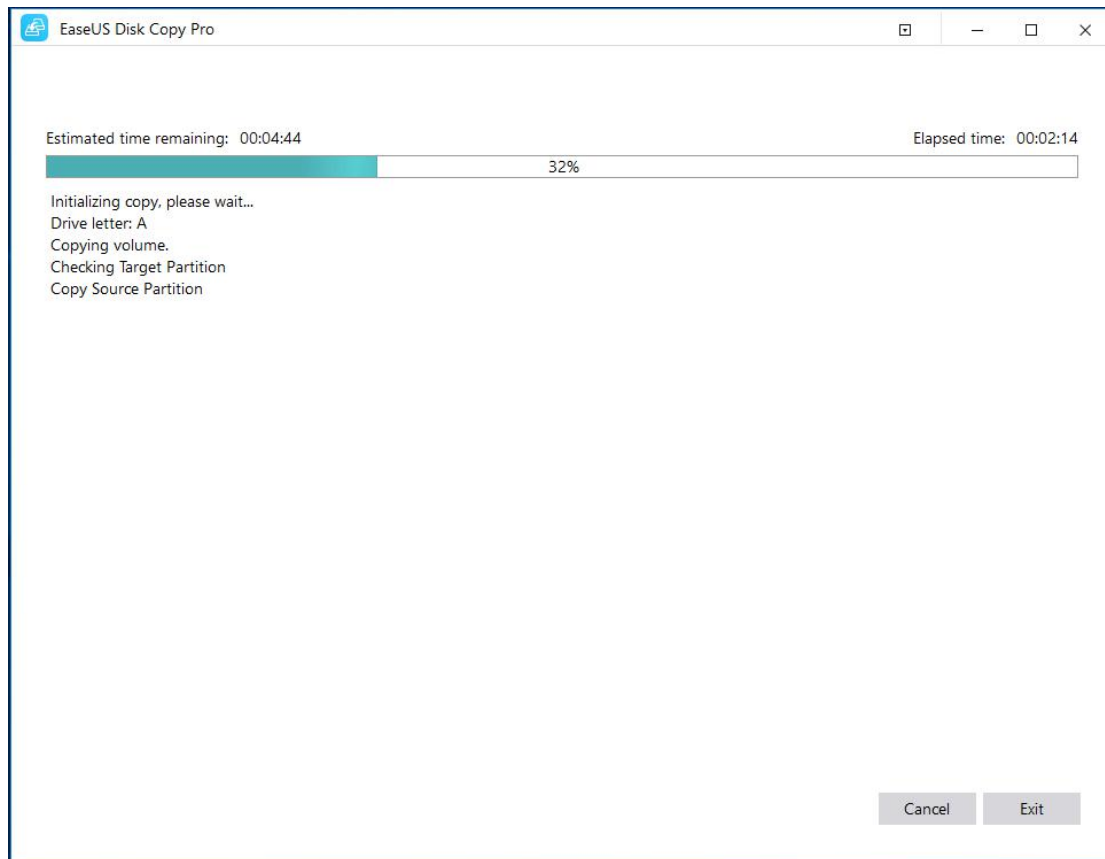
**“Copy as the source”** do not change anything on destination disk and the layout is same as source disk.

**“Edit disk layout”** allows you manually resize/move partition layout on this destination disk.

**Note:**

Check the optimization for SSD option if the target disk is SSD.

4. Finish the cloning.

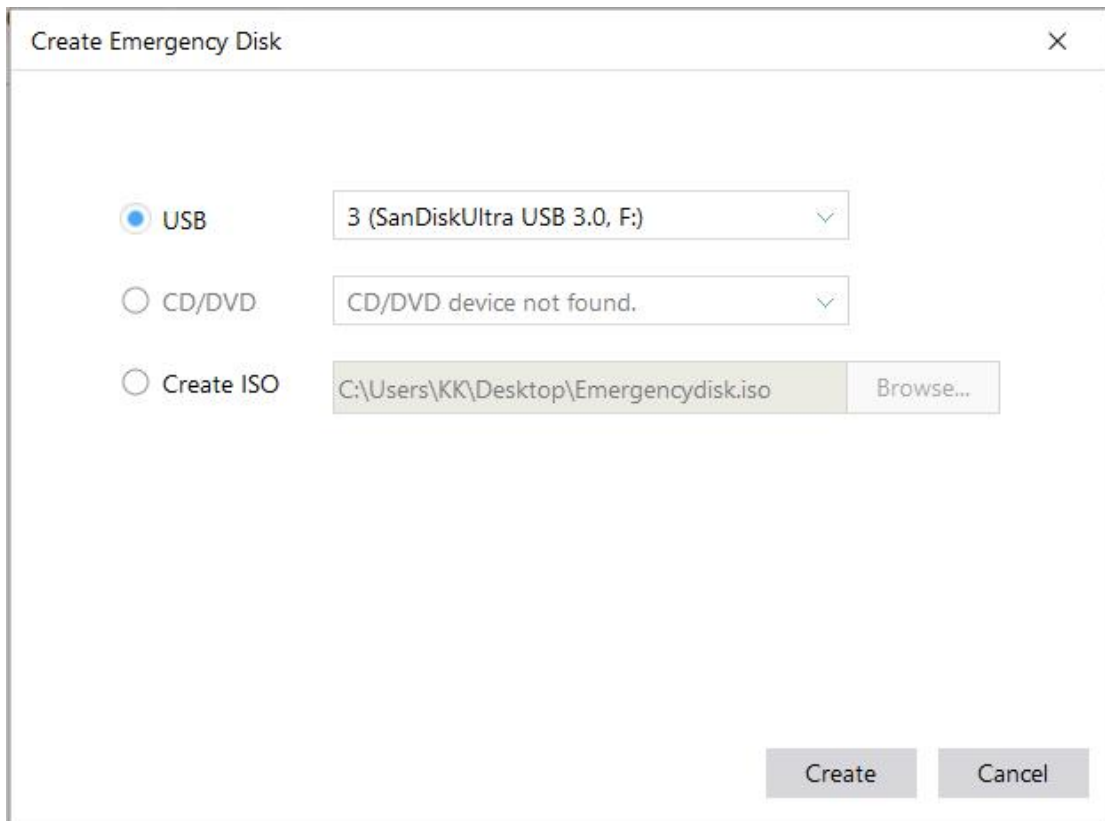
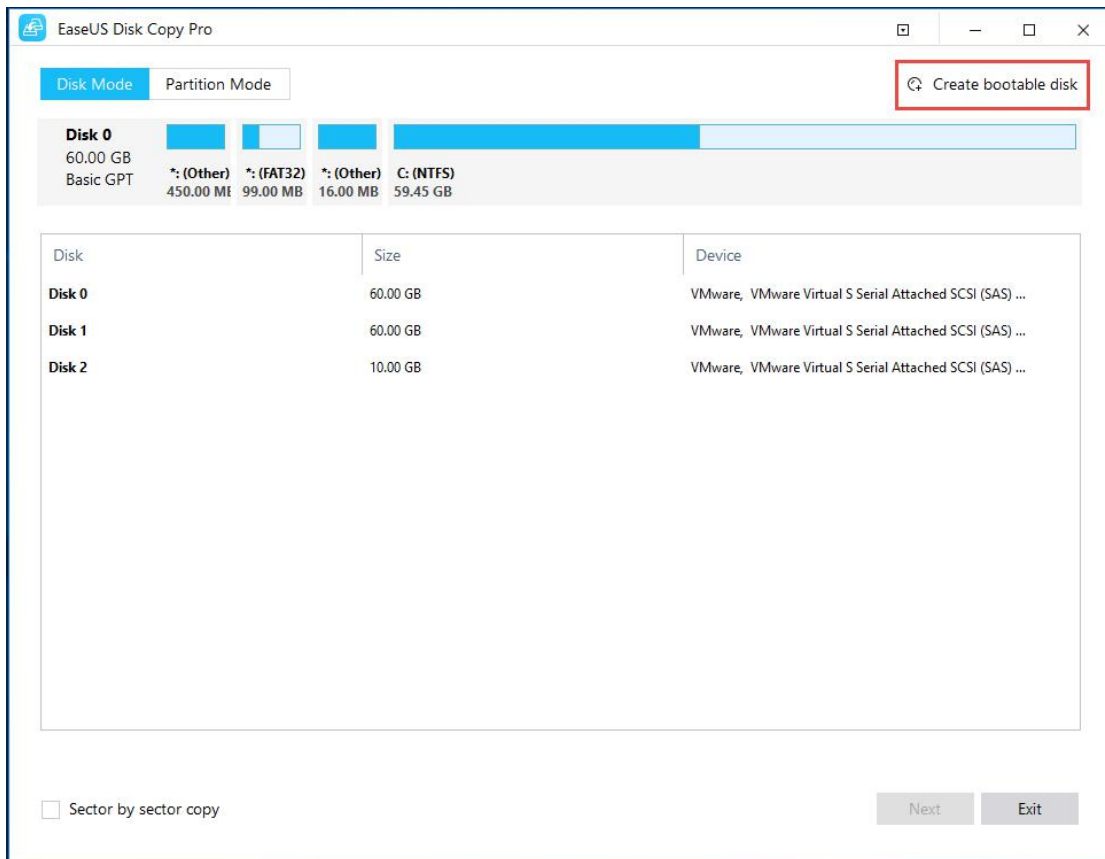


## WinPE Bootable Disk

**WinPE Bootable disk** is able to be created with a paid edition, and it can be used to boot a computer into WinPE environment to clone disk/partition.

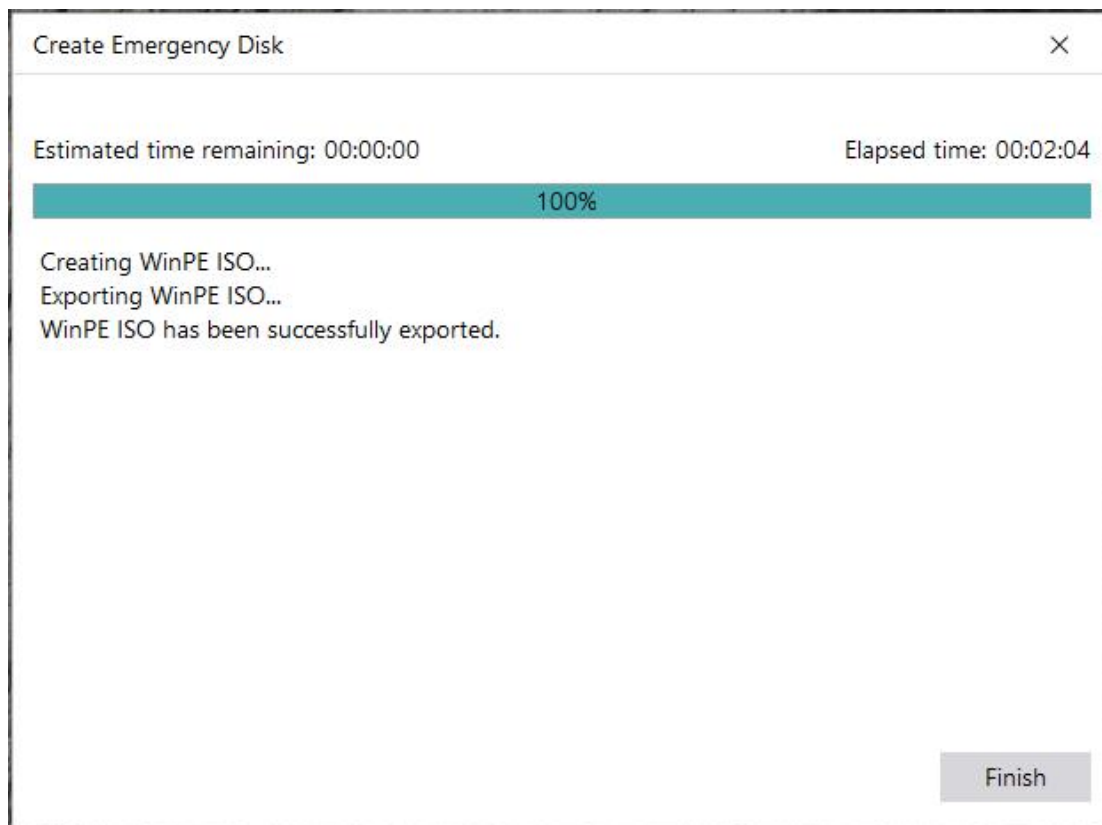
### Create a bootable disk

Click the **"Create bootable disk"** on main interface, and select one option (USB or CD/DVD) to create the bootable disk.





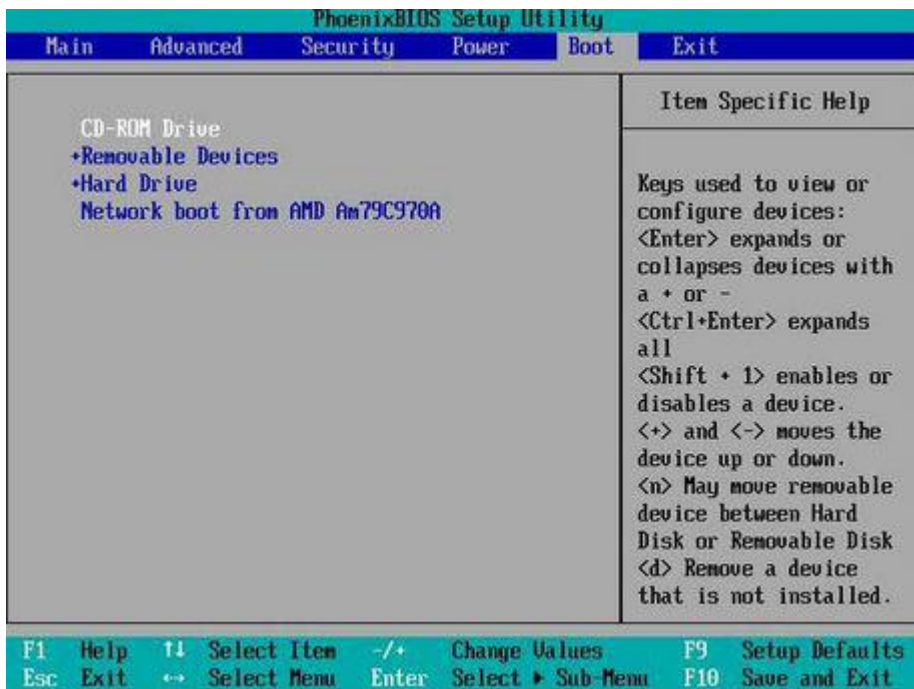
You can also export the ISO file with '**Create ISO**' option. Select this option and click '**Browse**' to specify a location for the ISO file storage. The ISO file can be used to burn a bootable Disk Copy CD/DVD or USB drive with any operating system using a burning software of your choice as far as it supports creating bootable disk from an ISO image.



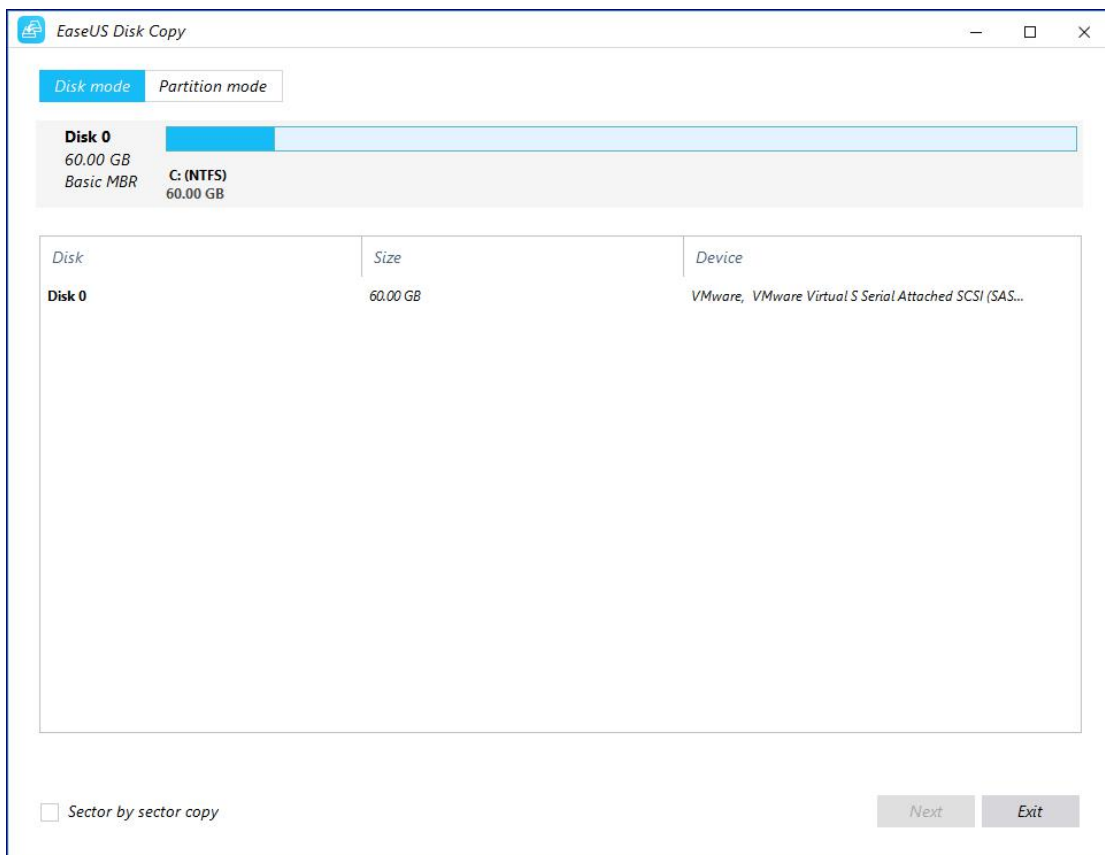
After having accomplished these steps you will have the bootable Disk Copy disc or USB drive ready. From this disk you can start Disk Copy on any PC with a bootable CD/DVD or USB drive as described in [Booting from the bootable CD/DVDs or USB Drive](#).

## Boot from the bootable disk

Insert the bootable Disk Copy bootable disk into the corresponding drive. Switch on the computer or reboot it. Make sure that the BIOS boots from the respective drive.



After booting from the bootable Disk Copy disk, the main interface of Disk Copy shows on the screen.



Please select a clone mode to start cloning, the operation is same as running this software in Windows.

**Note:**

WinPE bootable disk doesn't include all driver of hard disk, some special RAID disks cannot be recognized because of the lack of desired drivers. Please do the clone in Windows environment or [manually add driver to WinPE bootable disk](#).

## Feedback and Support

We invite your comments on how well EaseUS Disk Copy performed, and we are also enthusiastic in replying all your questions about using it. Please feel free to contact us at:

[support@todo-backup.com](mailto:support@todo-backup.com)

We also provide online chat service and the **Live Chat** option can be located in the top navigation bar of EaseUS official website [www.easeus.com](http://www.easeus.com).