

EaseUS® Disk Copy User Guide

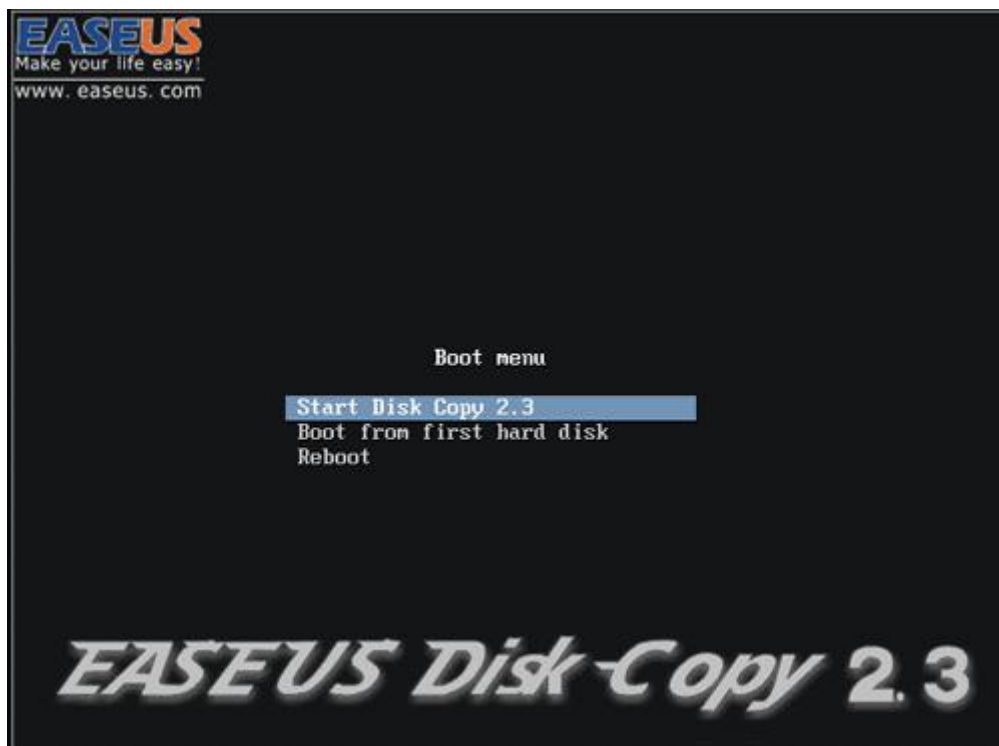


Table of contents

Welcome.....	- 3 -
Getting Started.....	- 3 -
Hardware Requirements.....	- 3 -
System Requirements.....	- 3 -
Supported File Systems.....	- 3 -
Supported Hard Disks.....	- 3 -
Edition Comparison.....	- 3 -
Advance Preparation.....	- 4 -
Creating a bootable disk.....	- 4 -
Booting from the bootable disk.....	- 6 -
Disk Clone.....	- 8 -
Partition Clone.....	- 11 -
Support.....	- 13 -

Welcome

Thank you very much for choosing **EaseUS Disk Copy**.

Disk Copy allows you to copy your disks or partitions regardless of your operating system, file systems and partition scheme. This manual will guide you to create bootable disk and use Disk Copy.

Getting Started

This part outlines basic parameters to use **EaseUS Disk Copy**. It is to help you acquire a general understanding before you get started.

Hardware Requirements

The list below shows the necessary requirements needed by Disk Copy.

- 500 MHz processor or faster
- A minimum of 1 gigabytes (GB) RAM
- CD/DVD ROM.
- PS/2 or USB 1.1/2.0 mouse.
- PS/2 or USB 1.1/2.0 keyboard.

System Requirements

Make sure you are running any one of listed operating systems:

- Windows XP®
- Windows Vista®
- Windows® 7
- Windows® 8
- Windows® 8.1
- Windows® 10
- Windows® Server 2003/2008/2012

Supported File Systems

EaseUS Disk Copy supports file systems, including FAT12, FAT16, FAT32, NTFS and EXT2/3. Other files systems are shown to be **unknown**.

Supported Hard Disks

Disk Copy can be used to copy data among the following types of devices: IDE HDD, SSD, USB 1.1/2.0 HDD, SCSI HDD, SATA HDD, Fire wire (IEEE 1394) HDD, etc.

The supported largest disk is **1TB**.

Edition Comparison

EaseUS provides two editions of Disk Copy, Home and Technician edition.

Home Edition - Only used for home users. The license is intended to use the software

only on one computer and only for your own personal use.

Technician Edition - It allows unlimited usage for multiple customers by one independent technician only who is defined as an independent managed service provider. After serving your customers, EaseUS Disk Copy Technician Edition should be Removed.

Tips:

Disk Copy doesn't have a trial edition and it can only be used after purchasing.

Feature Comparison

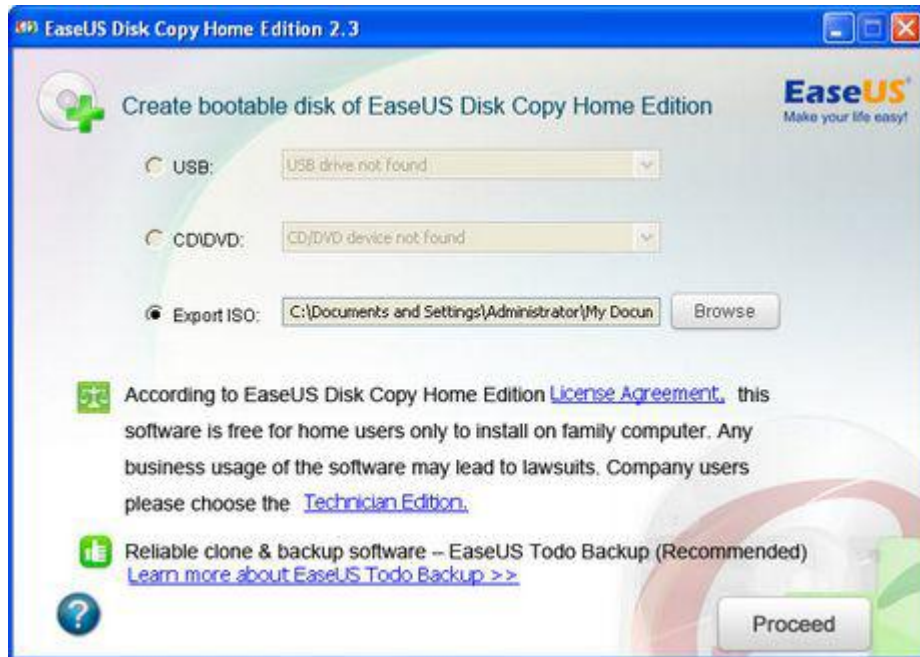
	Home	Technician
Disk/partition clone	•	•
Sector level clone	•	•
Support hard disk capacity	1TB	1TB
Working environment	Linux boot media	Linux boot media
Free lifetime upgrade	•	•
Business usage	-	•
Capable of delivering technical service to clients	-	•

Advance Preparation

Disk copy is based on a Linux bootable disk and you need to create the bootable disk manually by running the purchased *.exe software package.

Creating a bootable disk

The Disk Copy software package contains an .exe file, you can run this software to create a bootable disk. Here are the steps:



- Run Disk Copy 2.3.exe and select one option (USB or CD/DVD) to create the bootable disk.
- Click 'Proceed' to begin the process after you choose the proper device in the drop down list.
- Write to the device.

You can also export the so-called ISO image by '**Export ISO**' option. Select this option and click 'Browse' to specify a location for the ISO file storage. The ISO file can be used to create a bootable Disk Copy CD with any operating system using CD writing software of your choice as far as it supports creating bootable disk from an ISO image.

After having accomplished these steps you have created a bootable Disk Copy disc. From this disk you can start Disk Copy on any PC with a bootable CD/DVD or USB drive as described in [Booting from the bootable CD/DVDs](#).

Note:

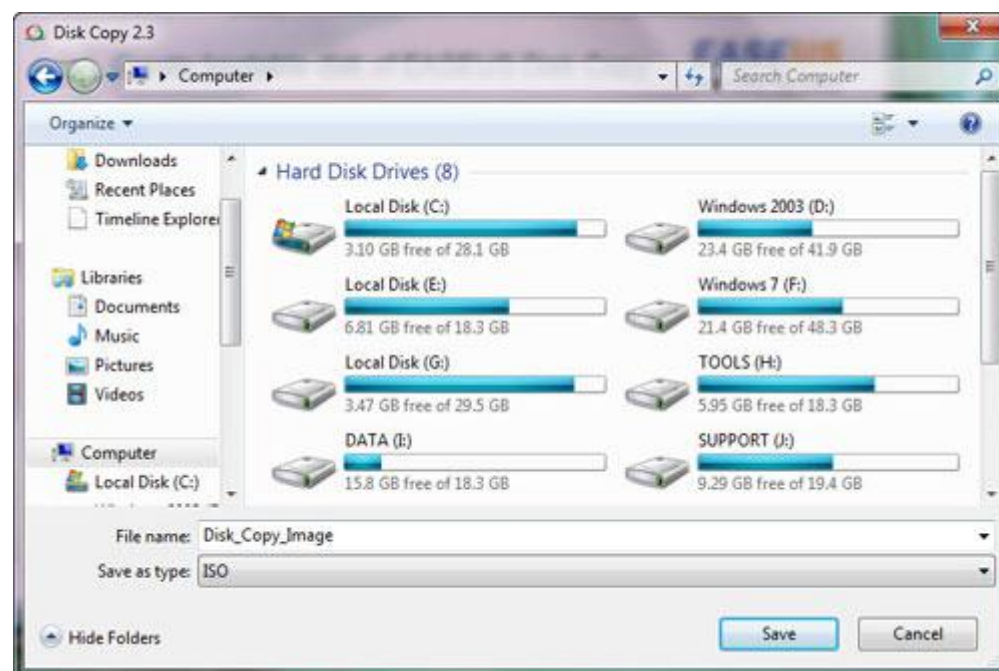
Generally the instructions provided above for creating a bootable CD using the ISO image can also be adapted to DVDs.

How to export ISO file of EaseUS Disk Copy?

1. Select Export ISO.



2. Click Browse to select the path to save the ISO file.

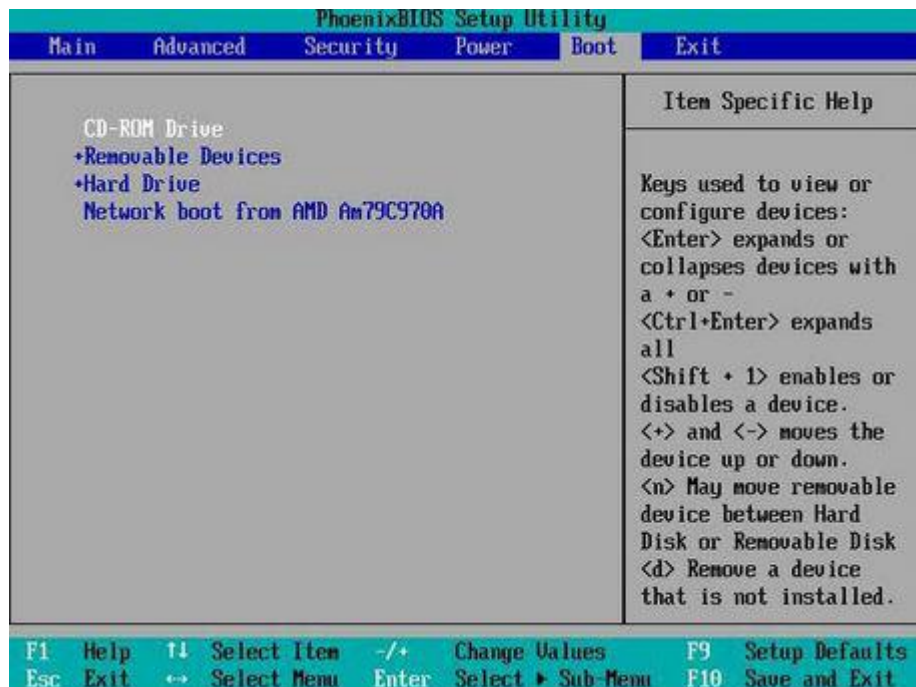


3. Click Proceed to export ISO file of EaseUS Disk Copy.

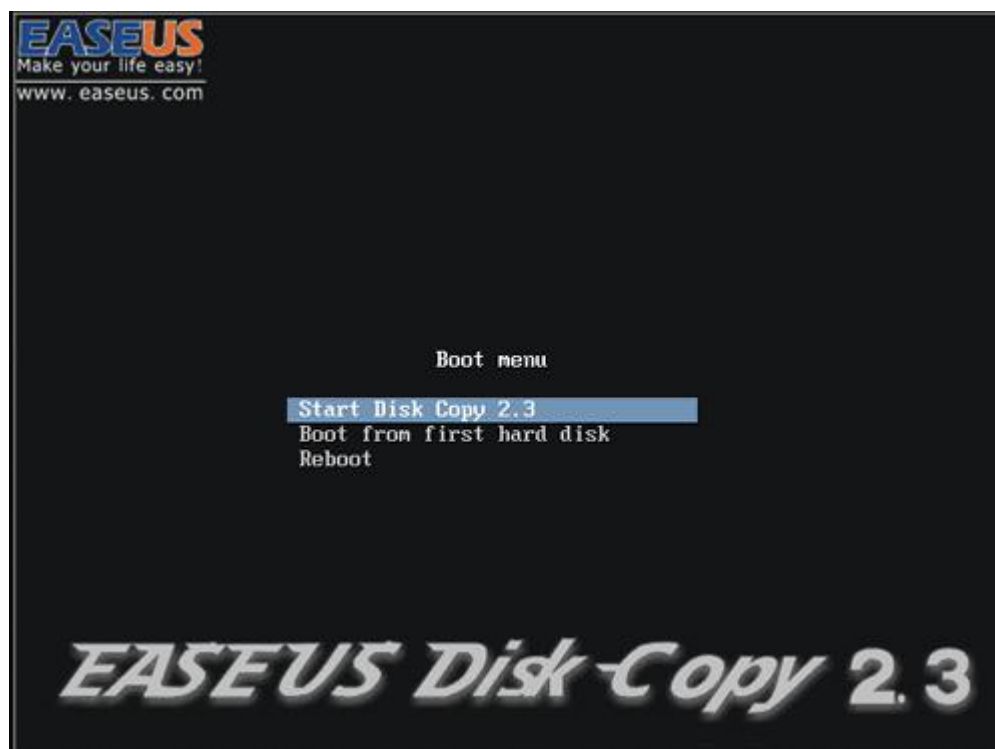
Booting from the bootable disk

Insert the bootable Disk Copy bootable disk into the corresponding drive. Switch on the

computer or reboot it. Make sure that the BIOS boots from the respective drive.



After boot from the bootable Disk Copy disk, a pre-start menu looks like the figure below will appear. You have three options: Start disk copy, boot from the hard disk and reboot.



Please select the “Start Disk Copy 2.3” then press Enter key on your keyboard to boot from the it.

Note:

Disk Copy will start automatically if there is no keyboard event in 10 seconds since the pre-start menu is shown.

Disk Clone

EaseUS Disk Copy allows you to clone one disk to another. The two disks are exactly same in each sector.

Attention Please:

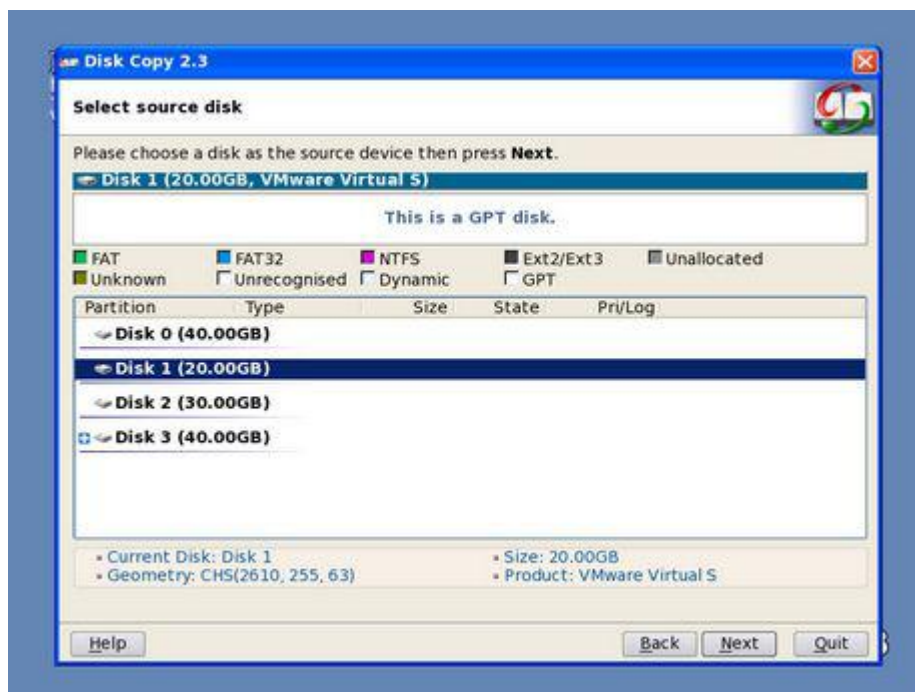
1. The destination disk should be equal or larger than the source disk. If not, the copied data may not keep intact.
2. If the size of destination disk is larger than source disk, after the copy finished, the size of destination disk will be changed to the same size as source disk and the rest space will be distributed into unallocated space.
3. All data on destination disk will be erased.

Step by Step instruction:

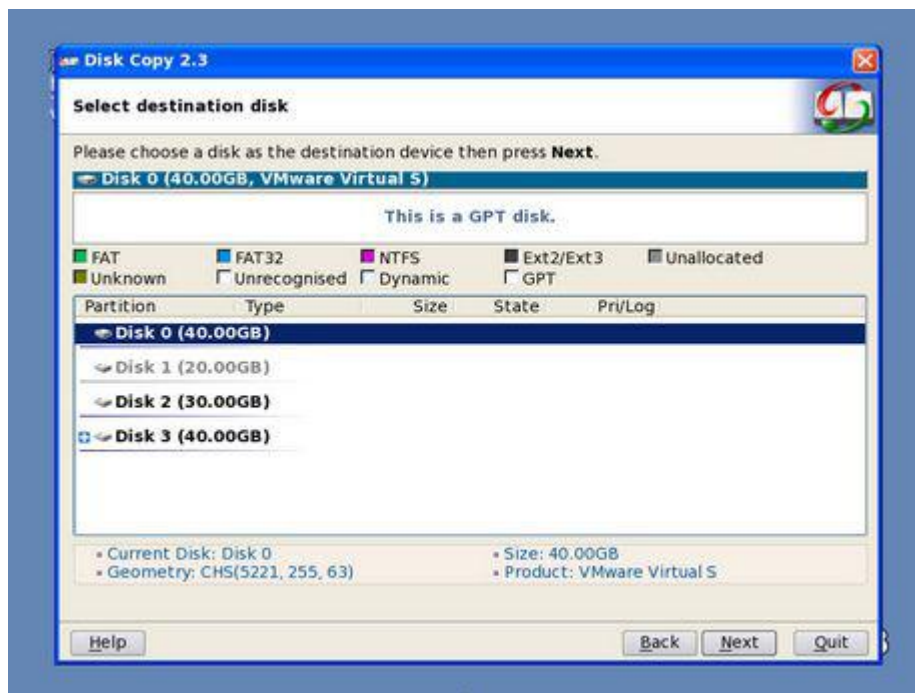
1. Choose "Disk Copy" and click "Next"



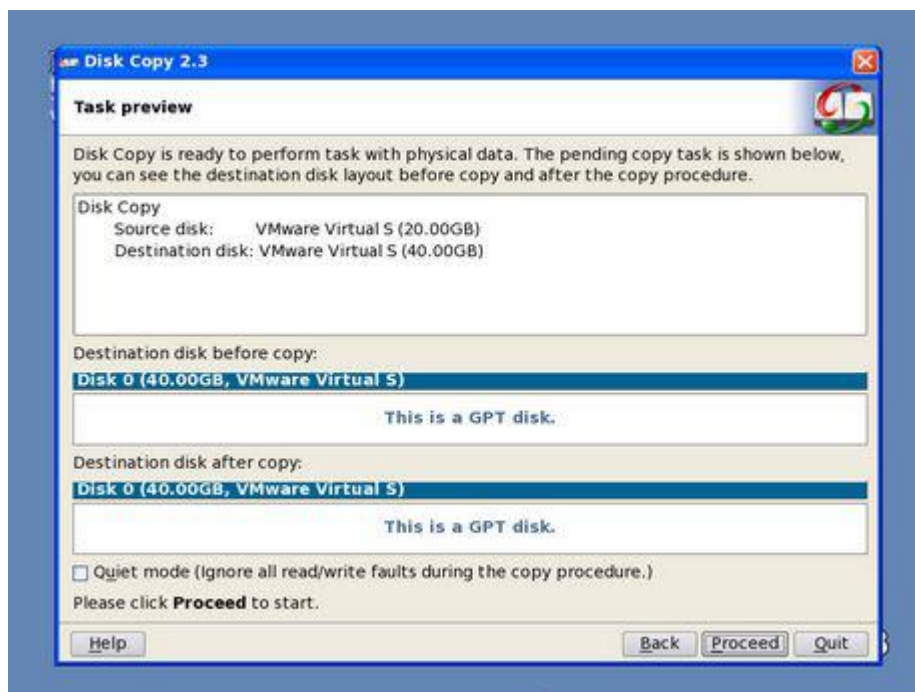
2. Select Source disk that you want to copy.



3. Choose the Destination Disk, and then click "Next".



4. To preview the result. If it is right, then click "Proceed" and do the confirmation.



5. Done.

Partition Clone

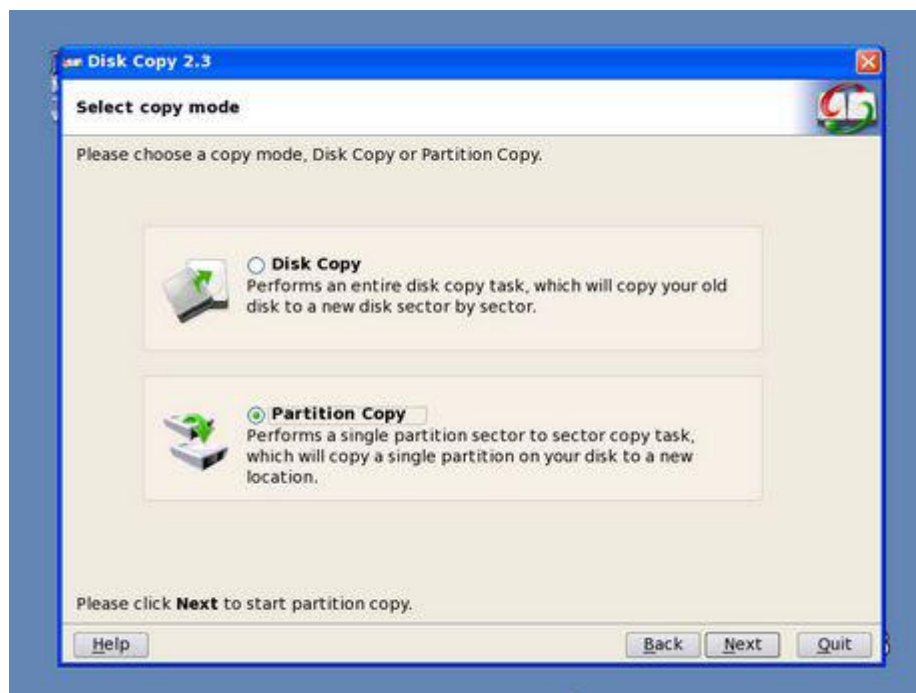
EaseUS Disk Copy allows you to clone one partition to another. The two partitions are exactly same in each sector.

Attention Please:

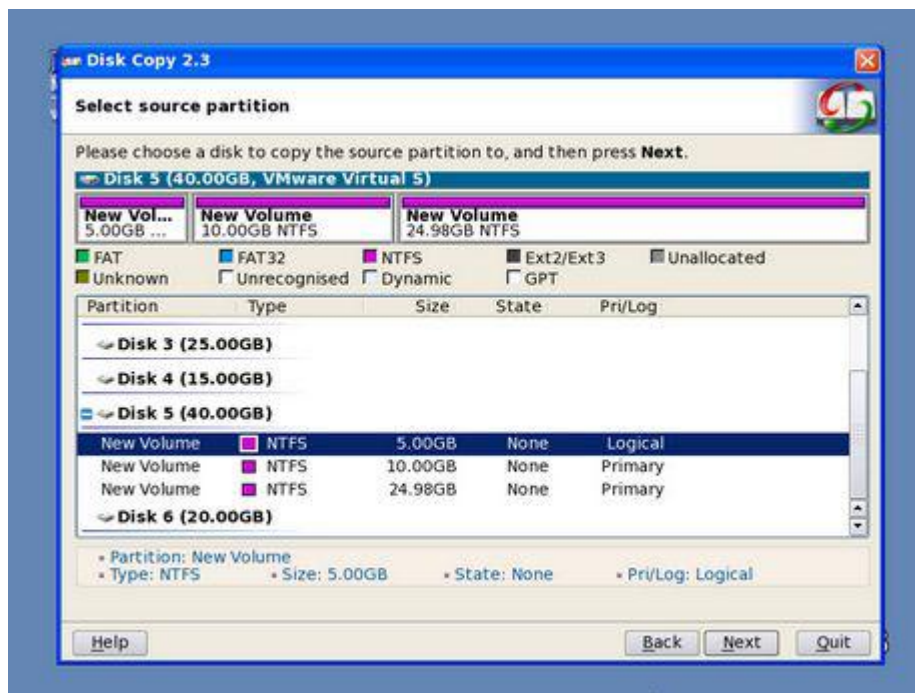
1. The destination partition should be equal or larger than the source partition. Otherwise, the copied data may not keep intact.
2. If the size of destination partition is larger than source partition, after the copy finished, the size of destination partition will be changed to the same size as source partition and the rest space will be distributed into unallocated space.
3. All data on destination partition will be erased.

Step by Step instruction:

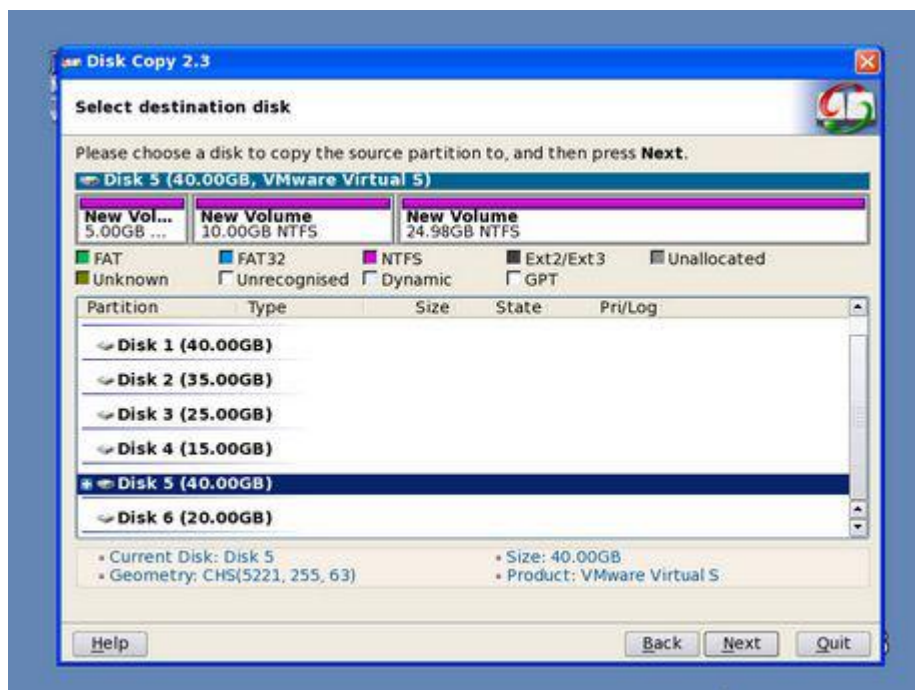
1. Choose "Partition Copy" and click "Next".



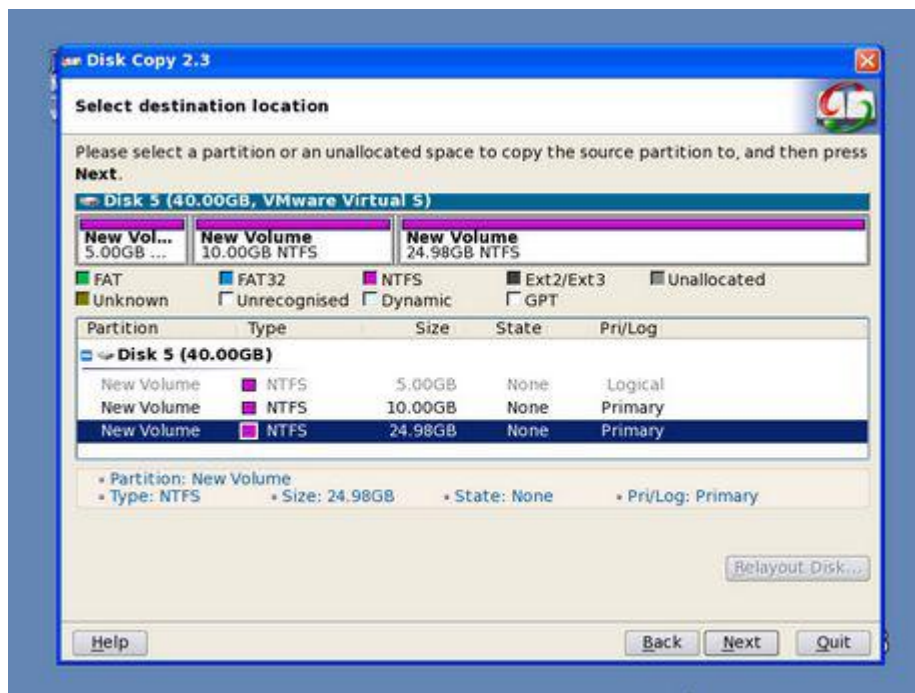
2. Select Source partition that you want to copy.



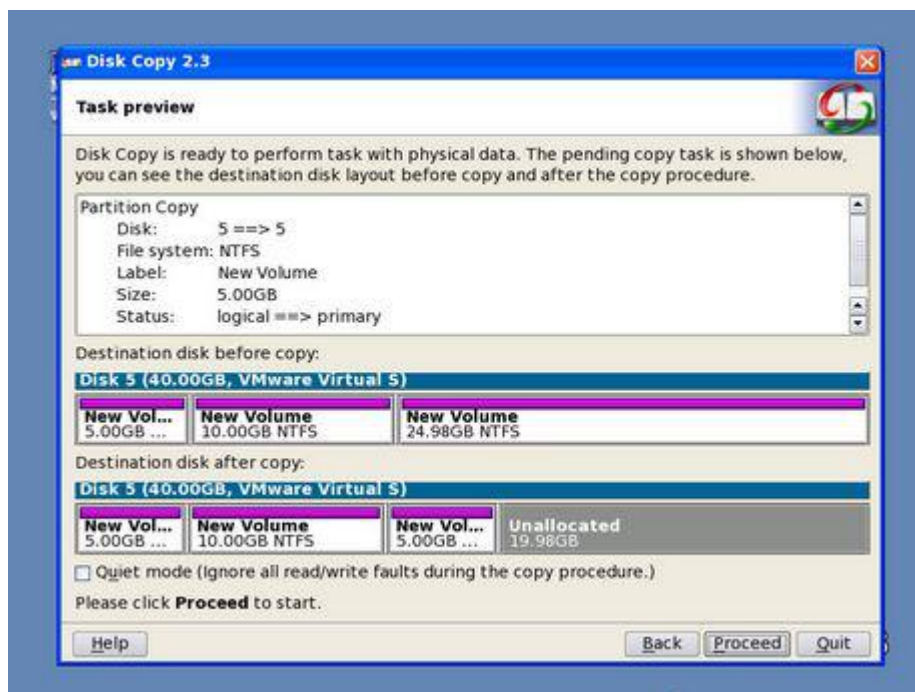
3. Choose the disk where the destination partition locates.



4. Choose the destination partition, and then click "Next".



5. To preview the result. If it is right, then click "Proceed" and do the confirmation.



6. Done.

Support

If you cannot find what you are looking for in this help, or you have any trouble on using this software, please contact support via email support@todo-backup.com to get a help.